

Fusion

GCD Hot Over Hot Combination Case

Structural Concepts®
DELIVERING FRESH. ALWAYS.™

- GCD656HHLB 73-1/8"L x 49-1/2"D x 55-3/4"H
- GCD856HHLB 97-1/2"L x 49-1/2"D x 55-3/4"H

(Lengths do not include 1-1/8" end panels)



GCD656HHLB

- Included**
- Condiment pan support rails
 - Lift-up front glass
 - One year parts & labor warranty
 - Stainless steel interior
 - Stainless steel rear exterior

Specify	Standard Features	Additional Options
EXTERIOR COLOR	<ul style="list-style-type: none">• Laminate (stock colors)	<ul style="list-style-type: none">• Laminate (non-stock colors)• Powder coated (stock/non-stock colors)• Powder coated Silversan Black• Stainless steel
LOWER FRONT PANEL COLOR	<ul style="list-style-type: none">• Powder coated Silversan Black	<ul style="list-style-type: none">• Powder coated (stock/non-stock colors)• Stainless steel
BASE SUPPORT	<ul style="list-style-type: none">• Rail system for shims	
BUMPER FRONT	<ul style="list-style-type: none">• 1" Boston bumper (specify color)	<ul style="list-style-type: none">• 1" Stainless steel plate rail bumper
END PANELS	<ul style="list-style-type: none">• Full w/stainless steel mirror interior	<ul style="list-style-type: none">• Cutaway w/glass
FRONT GLASS	<ul style="list-style-type: none">• Flat angled	
LOWER DISPLAY	<ul style="list-style-type: none">• Heated deck	
REAR DOORS	<ul style="list-style-type: none">• Clear glass rear sliding doors	<ul style="list-style-type: none">• Reflective glass rear sliding doors
UPPER DISPLAY	<ul style="list-style-type: none">• 4"D Full size pans	
ELECTRICAL CONNECTION	<ul style="list-style-type: none">• Electrical leads	
ACCESSORIES		<ul style="list-style-type: none">• Rear wrapping board, white Sanalite®

Fusion

GCD Hot Over Hot Combination Case

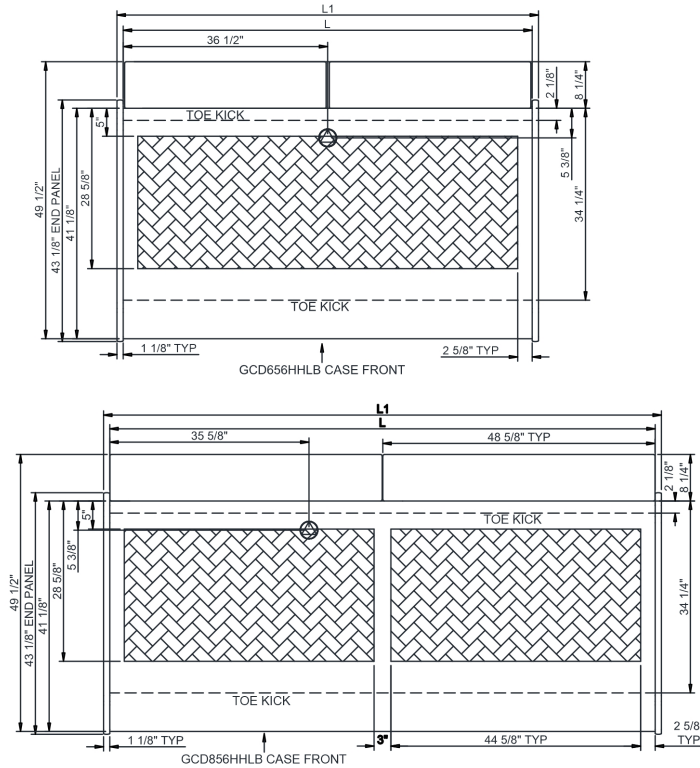
Structural Concepts®

DELIVERING FRESH. ALWAYS.™

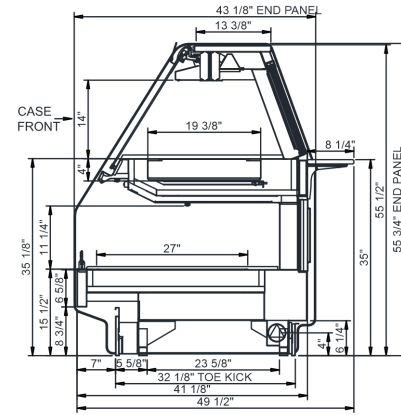
Intended Environment: Type I - Designed to operate in ambient conditions of 75°F with 55% relative humidity unless noted otherwise in system information below.

Zone	Intended Product To Be Displayed	Warmest Avg Prod Temp ° F
1	Packaged heated product	160
2	Unpackaged heated product	160

PLAN VIEW



SIDE VIEW



NOTE: ALL DIMENSIONS APPROXIMATE

ELECTRICAL JUNCTION BOX (SUPPLIED WITH 6" LEADS OR POWER CORD).
 LOCATION OF DRAIN TUBE FOR REMOTE REF. ONLY (SUPPLIED WITH 3/4" OR 1 1/2" PVC TUBE).

REFRIGERATION LINE CONNECTION.
 REMOTE FLOOR SINK & UTILITIES ACCESS AREA.

SELF-CONTAINED CASE SERVICE ACCESS AREA.
 DRY CASE SERVICE ACCESS AREA.

Model Technical Specifications																
Model	L"	L1"	L2"	System Circuit Volts			Phs	Freq	Amps ***	Watts	Wires	NEMA Plug	SST	Conv. Rack BTU/H	Para. Rack BTU/H	Est Wt
GCD656HHLB	73.13	75.38	.00	Heat (N/A)	Circuit #1	208	1	60	21.95	4,501	2+G	Leads Multiple	N/A	N/A	N/A	1,375
						240	1	60	25.28	5,967	2+G	Leads Multiple	N/A	N/A	N/A	
						208	3	60	16.60	4,501	3+G	Leads Multiple	N/A	N/A	N/A	
						240	3	60	19.08	5,967	3+G	Leads Multiple	N/A	N/A	N/A	
GCD856HHLB	97.50	99.75	.00	Heat (N/A)	Circuit #1	208	1	60	36.21	7,628	2+G	Leads Multiple	N/A	N/A	N/A	1,400
						240	1	60	41.71	10,070	2+G	Leads Multiple	N/A	N/A	N/A	
						208	3	60	27.86	7,628	3+G	Leads Multiple	N/A	N/A	N/A	
						240	3	60	32.17	10,070	3+G	Leads Multiple	N/A	N/A	N/A	

*** Does not include electric defrost on freezer models.

Regulatory Approvals:

All Models
 ETL Listed to UL 197
 ETL Listed to CAN/CSA 22.2 No. 109
 ETL Sanitation to NSF/ANSI 4

DOE 2017
 Energy Efficiency
 Compliant

Important Notes:

- 1) ELECTRICAL NOTE: If GFCI is required, a GFCI breaker MUST be used in lieu of a GFCI receptacle.
- 2) 52" minimum door entry clearance required (without shipping skid).
- 3) Units must be shimmed during installation to ensure the unit is level and plumb.

⚠ WARNING: This product can expose you to chemicals, including Urethane (Ethyl Carbamate), which are known to the State of California to cause cancer and birth defects or other reproductive harm. For more information go to www.P65Warnings.ca.gov.