

# Technical Information

Fusion - GHS 52"H Refrigerated Service Case w/ Flat Glass

Structural Concepts®

DELIVERING FRESH. ALWAYS.™

## DIMENSIONS / SHIPPING

Model	L"	L1"	L2"	Est Wt (lbs)
GHS452RLB	48.750	51.000	3.625	N/A
GHS552RLB	60.625	62.875	3.625	N/A
GHS652RLB	73.125	75.375	3.625	N/A
GHS852RLB	97.500	99.750	3.625	N/A
GHS1052RLB	121.125	123.375	40.500	N/A
GHS1252RLB	146.250	148.500	45.125	N/A

## ELECTRICAL

Model	System Circuit Volts			Ph	Frq	Rated Load Amps	Min Cir Amps	Max OCP Amps	Watts	Wires	NEMA Plug	Amps Lights	Amps Fans	Amps Anti-Sweats	Amps Misc/Refrig/Heat
GHS452RLB	Remote (DX)	Circuit #1	110-120	1	60	1.93	15	15	96	2+G	Leads Multiple	0.70	0.31	0.84	0.08
	Remote (GLYCOL)	Circuit #1	110-120	1	60	1.85	15	15	86	2+G	Leads Multiple	0.70	0.31	0.84	N/A
GHS552RLB	Remote (DX)	Circuit #1	110-120	1	60	3.41	15	15	119	2+G	Leads Multiple	1.40	0.31	1.62	0.08
	Remote (GLYCOL)	Circuit #1	110-120	1	60	3.33	15	15	109	2+G	Leads Multiple	1.40	0.31	1.62	N/A
GHS652RLB	Remote (DX)	Circuit #1	110-120	1	60	3.76	15	15	160	2+G	Leads Multiple	1.40	0.62	1.66	0.08
	Remote (GLYCOL)	Circuit #1	110-120	1	60	3.68	15	15	150	2+G	Leads Multiple	1.40	0.62	1.66	N/A
GHS852RLB	Remote (DX)	Circuit #1	110-120	1	60	3.87	15	15	193	2+G	Leads Multiple	1.40	0.62	1.77	0.08
	Remote (GLYCOL)	Circuit #1	110-120	1	60	3.79	15	15	183	2+G	Leads Multiple	1.40	0.62	1.77	N/A
GHS1052RLB	Remote (DX)	Circuit #1	110-120	1	60	4.64	15	15	229	2+G	Leads Multiple	2.10	0.62	1.84	0.08
	Remote (GLYCOL)	Circuit #1	110-120	1	60	4.56	15	15	126	2+G	Leads Multiple	2.10	0.62	1.84	N/A
GHS1252RLB	Remote (DX)	Circuit #1	110-120	1	60	6.46	15	15	285	2+G	Leads Multiple	2.10	0.93	3.35	0.08
	Remote (GLYCOL)	Circuit #1	110-120	1	60	6.38	15	15	275	2+G	Leads Multiple	2.10	0.93	3.35	N/A

## REFRIGERATION

Model	Zone	Section	System	Env't	REMOTE REFRIGERATION					GLYCOL / R744 REFRIGERATION			
					SST (°F)	Conv. Rack BTUH	Para. Rack BTUH	Defrost Interval (Hrs)	Defrost Duration	Total GPM	Pressure Drop (psi)	Concent (%)	Liquid Temp (°F)
GHS452RLB	All	Main	Remote-DX	Type I	20	1,728	1,600	4.00	30.00	N/A	N/A	N/A	N/A
	All	Main	Remote-Glycol	Type I	N/A	1,728	1,600	4.00	45.00	0.50	0.87	35%	20.00
GHS552RLB	All	Main	Remote-DX	Type I	20	2,052	1,900	4.00	30.00	N/A	N/A	N/A	N/A
	All	Main	Remote-Glycol	Type I	N/A	2,052	1,900	4.00	45.00	0.50	1.03	35%	20.00
GHS652RLB	All	Main	Remote-DX	Type I	20	2,614	2,420	4.00	30.00	N/A	N/A	N/A	N/A
	All	Main	Remote-Glycol	Type I	N/A	2,614	2,420	4.00	45.00	0.50	1.12	35%	20.00
GHS852RLB	All	Main	Remote-DX	Type I	20	3,283	3,040	4.00	30.00	N/A	N/A	N/A	N/A
	All	Main	Remote-Glycol	Type I	N/A	3,283	3,040	4.00	45.00	1.00	0.87	35%	20.00
GHS1052RLB	All	Main	Remote-DX	Type I	20	4,018	3,720	4.00	30.00	N/A	N/A	N/A	N/A
	All	Main	Remote-Glycol	Type I	N/A	4,018	3,720	4.00	45.00	1.00	1.00	35%	20.00
GHS1252RLB	All	Main	Remote-DX	Type I	20	4,882	4,520	4.00	30.00	N/A	N/A	N/A	N/A
	All	Main	Remote-Glycol	Type I	N/A	4,882	4,520	4.00	45.00	1.50	0.87	35%	20.00

## INTENDED ENVIRONMENT

Type I - Designed to operate in ambient conditions of 75°F with 55% relative humidity unless noted otherwise under Env't above.

## WARMEST AVERAGE PRODUCT TEMP & INTENDED USE OF ZONES

Zone	Temp (°F)	Intended Use
1	40	Unpackaged refrigerated products

## REGULATORY

All Models	Accordance with AHRI Std 1200 ETL Listed to UL 471 ETL Listed to CAN/CSA 22.2 No. 120 ETL Sanitation to NSF/ANSI 7
------------	---



In Accordance with  
**AHRI Std 1200**

## IMPORTANT NOTES

- 1) ELECTRICAL NOTE: If GFCI is required, a GFCI breaker MUST be used in lieu of a GFCI receptacle
- 2) 45" minimum door entry clearance required (without shipping skid).
- 3) Units must be shimmed during installation to ensure the unit is level and plumb.

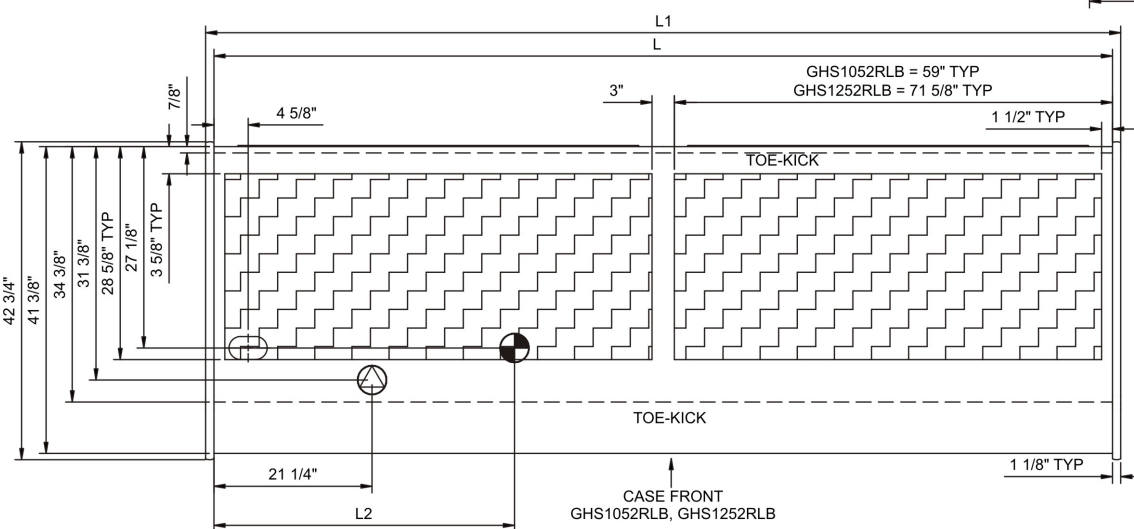
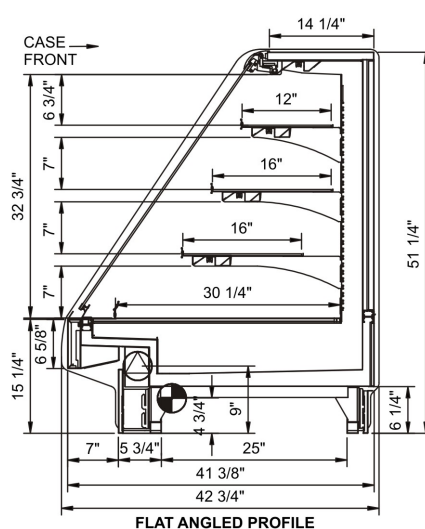
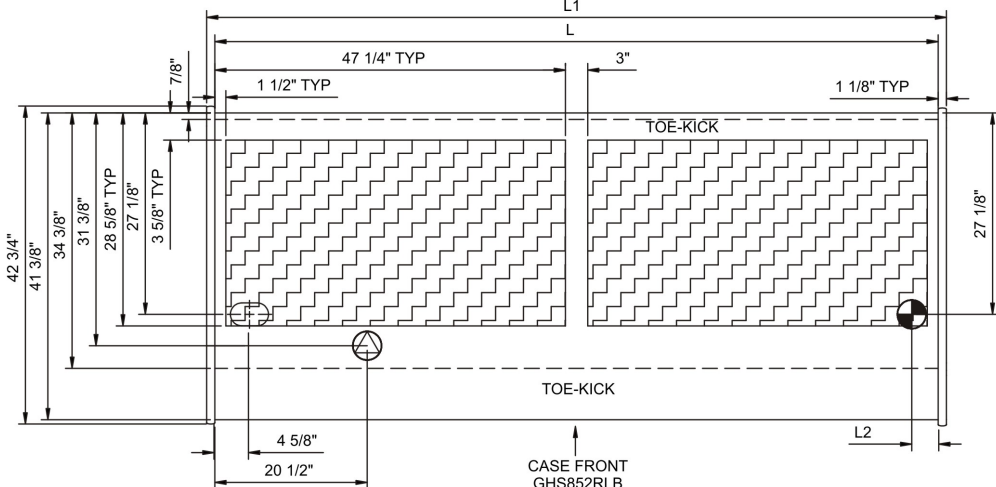
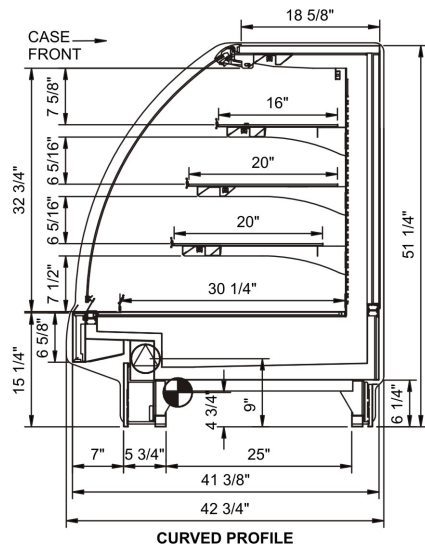
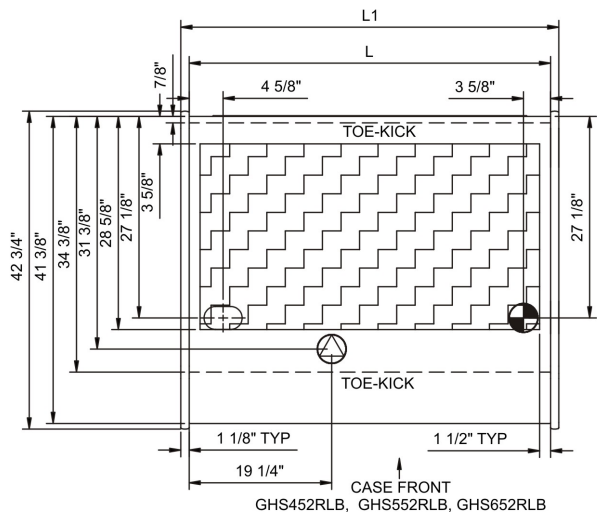
# Technical Information

Fusion - GHS 52"H Refrigerated Service Case w/ Flat Glass

Structural Concepts®

DELIVERING FRESH. ALWAYS.™

## STANDARD HEADER



NOTE: ALL DIMENSIONS APPROXIMATE

- ELECTRICAL JUNCTION BOX (SUPPLIED WITH 6" LEADS OR POWER CORD).
- REFRIGERATION LINE CONNECTION.
- SELF-CONTAINED CASE SERVICE ACCESS AREA.
- LOCATION OF DRAIN TUBE FOR REMOTE REF. ONLY (SUPPLIED WITH 3/4" OR 1 1/2" PVC TUBE).
- REMOTE FLOOR SINK & UTILITIES ACCESS AREA.
- DRY CASE SERVICE ACCESS AREA.