

# Technical Information

Fusion - GHS 56"H Refrigerated Service Case w/ Curved Glass

Structural Concepts®

DELIVERING FRESH. ALWAYS.™

## DIMENSIONS / SHIPPING

Model	L"	L1"	L2"	Est Wt (lbs)
GHS456RLB	48.750	51.000	3.625	N/A
GHS556RLB	60.625	62.875	3.625	N/A
GHS656RLB	73.125	75.375	3.625	N/A
GHS856RLB	97.500	99.750	3.625	N/A
GHS1056RLB	121.125	123.375	11.375	N/A
GHS1256RLB	146.250	148.500	45.125	N/A

## ELECTRICAL

Model	System Circuit Volts			Ph	Frq	Rated Load Amps	Min Cir Amps	Max OCP Amps	Watts	Wires	NEMA Plug	Amps Lights	Amps Fans	Amps Anti-Sweats	Amps Misc/Refrig/Heat
GHS456RLB	Remote (DX)	Circuit #1	110-120	1	60	2.66	15	15	251	2+G	Leads Multiple	1.52	0.30	0.84	N/A
GHS556RLB	Remote (DX)	Circuit #1	110-120	1	60	2.92	15	15	149	2+G	Leads Multiple	1.40	0.60	0.92	N/A
GHS656RLB	Remote (DX)	Circuit #1	110-120	1	60	3.66	15	15	156	2+G	Leads Multiple	1.40	0.60	1.66	N/A
	Remote (GLYCOL)	Circuit #1	110-120	1	60	3.66	15	15	156	2+G	Leads Multiple	1.40	0.60	1.66	N/A
	Remote (R744 T)	Circuit #1	110-120	1	60	3.66	15	15	79	2+G	Leads Multiple	1.40	0.60	1.66	N/A
GHS856RLB	Remote (DX)	Circuit #1	110-120	1	60	4.47	15	15	197	2+G	Leads Multiple	2.10	0.60	1.77	N/A
	Remote (GLYCOL)-Type I Env	Circuit #1	110-120	1	60	3.06	15	15	182	2+G	Leads Multiple	2.10	0.60	1.76	N/A
GHS1056RLB	Remote (DX)	Circuit #1	110-120	1	60	5.84	15	15	267	2+G	Leads Multiple	2.80	1.20	1.84	N/A
GHS1256RLB	Remote (DX)	Circuit #1	110-120	1	60	5.65	15	15	296	2+G	Leads Multiple	2.80	0.90	1.95	N/A
	Remote (GLYCOL)	Circuit #1	110-120	1	60	6.38	15	15	549	2+G	Leads Multiple	2.10	0.93	3.35	N/A

## REFRIGERATION

Model	Zone	Section	System	Envt	REMOTE REFRIGERATION					GLYCOL / R744 REFRIGERATION			
					SST (°F)	Conv. Rack BTUH	Para. Rack BTUH	Defrost Interval (Hrs)	Defrost Duration	Total GPM	Pressure Drop (psi)	Concent (%)	Liquid Temp (°F)
GHS456RLB	All	Main	Remote-DX	Type I	20	1,793	1,660	4.00	25.00	N/A	N/A	N/A	N/A
GHS556RLB	All	Main	Remote-DX	Type I	20	2,138	1,980	4.00	30.00	N/A	N/A	N/A	N/A
GHS656RLB	All	Main	Remote-DX	Type I	20	2,722	2,520	4.00	30.00	N/A	N/A	N/A	N/A
	All	Main	Remote-Glycol	Type I	N/A	2,722	2,520	4.00	30.00	0.50	1.10	35%	20.00
	All	Main	Remote-R744 TRANSCRITICAL	Type I	20	2,722	2,520	4.00	30.00	N/A	N/A	N/A	N/A
GHS856RLB	All	Main	Remote-DX	Type I	20	3,456	3,200	4.00	30.00	N/A	N/A	N/A	N/A
	All	Refrigerator	Remote-Glycol-Type I Env	Type I	N/A	3,348	3,100	4.00	45.00	1.00	3.70	35%	20.00
GHS1056RLB	All	Main	Remote-DX	Type I	20	4,234	3,920	4.00	30.00	N/A	N/A	N/A	N/A
GHS1256RLB	All	Main	Remote-DX	Type I	20	5,011	4,640	4.00	30.00	N/A	N/A	N/A	N/A
	All	Main	Remote-Glycol	Type I	N/A	5,011	4,640	4.00	45.00	0.90	1.44	35%	20.00

## INTENDED ENVIRONMENT

Type I - Designed to operate in ambient conditions of 75°F with 55% relative humidity unless noted otherwise under Envt above.

## WARMEST AVERAGE PRODUCT TEMP & INTENDED USE OF ZONES

Zone	Temp (°F)	Intended Use
1	40	Unpackaged refrigerated products

## IMPORTANT NOTES

- 1) ELECTRICAL NOTE: If GFCI is required, a GFCI breaker MUST be used in lieu of a GFCI receptacle.
- 2) 45" minimum door entry clearance required (without shipping skid).
- 3) Units must be shimmed during installation to ensure the unit is level and plumb.

## REGULATORY

All Models	Accordance with AHRI Std 1200 ETL Listed to UL 471 ETL Listed to CAN/CSA 22.2 No. 120 ETL Sanitation to NSF/ANSI 7
------------	---



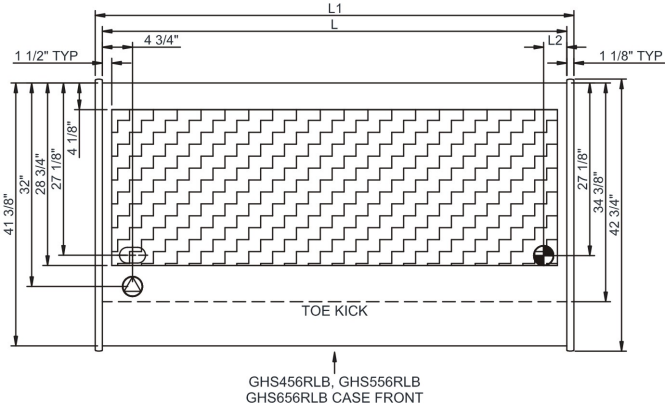
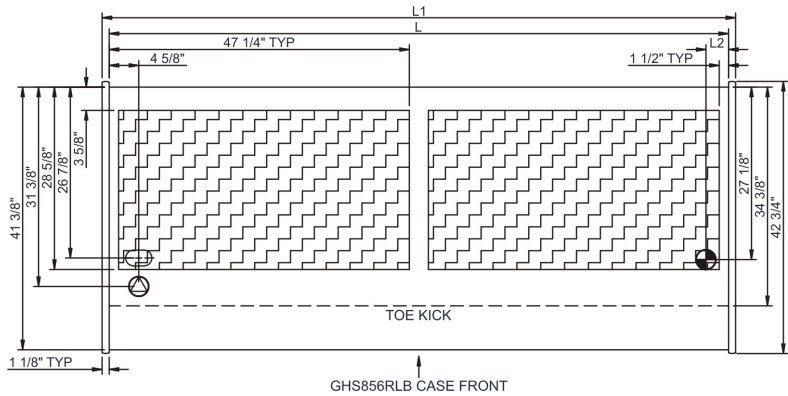
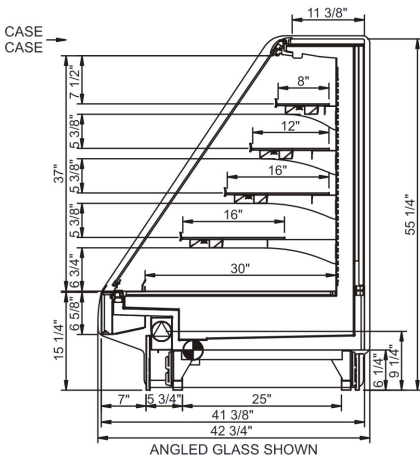
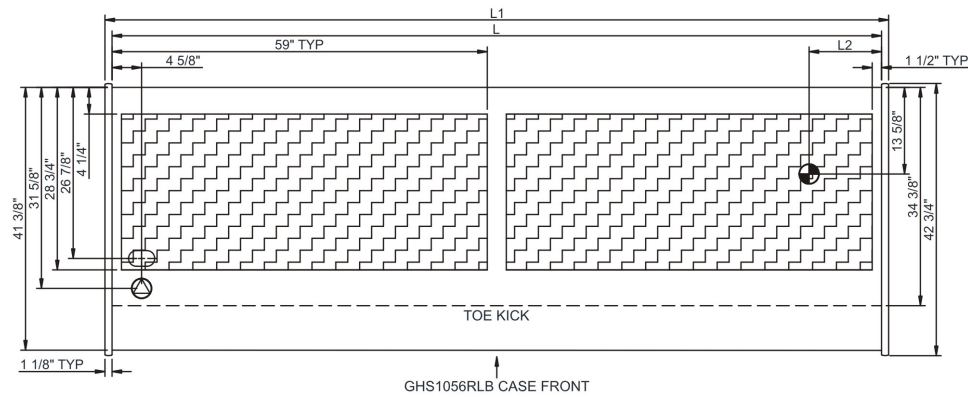
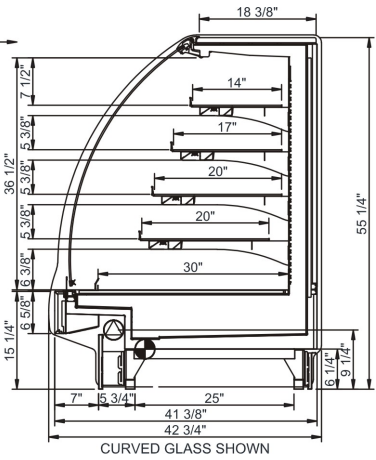
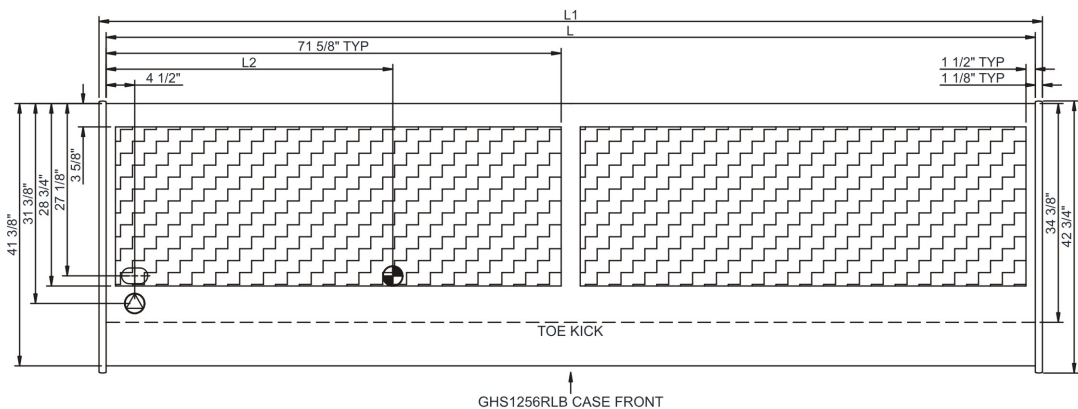
In Accordance with  
**AHRI Std 1200**

# Technical Information

Fusion - GHS 56"H Refrigerated Service Case w/ Curved Glass

Structural Concepts®  
DELIVERING FRESH. ALWAYS.™

## STANDARD HEADER



NOTE: ALL DIMENSIONS APPROXIMATE

- ELECTRICAL JUNCTION BOX (SUPPLIED WITH 6" LEADS OR POWER CORD).
- REFRIGERATION LINE CONNECTION.
- SELF-CONTAINED CASE SERVICE ACCESS AREA.
- LOCATION OF DRAIN TUBE FOR REMOTE REF. ONLY (SUPPLIED WITH 3/4" OR 1 1/2" PVC TUBE).
- REMOTE FLOOR SINK & UTILITIES ACCESS AREA.
- DRY CASE SERVICE ACCESS AREA.