

Technical Information

Fusion - GHSS 52"H Heated Self-Service Case

Structural Concepts®

DELIVERING FRESH. ALWAYS.™

DIMENSIONS / SHIPPING

Model	L"	L1"	L2"	Est Wt (lbs)
GHSS452HLB	48.750	51.000	0.000	550
GHSS652HLB	73.125	75.375	0.000	925
GHSS852HLB	97.500	99.750	0.000	1,120

ELECTRICAL

Model	System Circuit Volts			Ph	Frq	Rated Load Amps	Min Cir Amps	Max OCP Amps	Watts	Wires	NEMA Plug	Amps Lights	Amps Fans	Amps Anti-Sweats	Amps Misc/Refrig/ Heat
GHSS452HLB	Heat (N/A)	Circuit #1	208	1	50-60	22.29	30	30	4,655	2+G	Leads Single	0.36	N/A	N/A	21.93
	Heat (N/A)	Circuit #1	240	1	50-60	25.65	40	40	6,166	2+G	Leads Single	0.36	N/A	N/A	25.29
	Heat (N/A)	Circuit #1	208	3	50-60	17.13	30	30	4,655	3+G	Leads Single	0.36	N/A	N/A	21.93
	Heat (N/A)	Circuit #1	240	3	50-60	19.70	30	30	6,166	3+G	Leads Single	0.36	N/A	N/A	25.29
GHSS652HLB	Heat (N/A)	Circuit #1	208	1	50-60	32.06	50	50	6,589	2+G	Leads Single	1.10	N/A	N/A	30.96
	Heat (N/A)	Circuit #1	240	1	50-60	36.78	50	50	8,721	2+G	Leads Single	1.10	N/A	N/A	35.68
	Heat (N/A)	Circuit #1	208	3	50-60	23.94	30	30	6,589	3+G	Leads Single	1.10	N/A	N/A	30.96
	Heat (N/A)	Circuit #1	240	3	50-60	27.48	40	40	8,721	3+G	Leads Single	1.10	N/A	N/A	35.68
GHSS852HLB	Heat (N/A)	Circuit #1	208	1	50-60	22.29	30	30	4,655	2+G	Leads Single	0.36	N/A	N/A	21.93
	Heat (N/A)	Circuit #1	240	1	50-60	25.65	40	40	6,166	2+G	Leads Single	0.36	N/A	N/A	25.29
	Heat (N/A)	Circuit #1	208	3	50-60	17.13	30	30	4,655	3+G	Leads Single	0.36	N/A	N/A	21.93
	Heat (N/A)	Circuit #1	240	3	50-60	19.70	30	30	6,166	3+G	Leads Single	0.36	N/A	N/A	25.29
	Heat (N/A)	Circuit #2	208	1	50-60	22.29	30	30	4,655	2+G	Leads Single	N/A	N/A	-51/65	27.45
	Heat (N/A)	Circuit #2	240	1	50-60	25.65	40	40	6,166	2+G	Leads Single	N/A	N/A	-51/65	31.60
	Heat (N/A)	Circuit #2	208	3	50-60	17.13	30	30	4,655	3+G	Leads Single	N/A	N/A	-51/65	27.45
	Heat (N/A)	Circuit #2	240	3	50-60	19.70	30	30	6,166	3+G	Leads Single	N/A	N/A	-51/65	31.60

REFRIGERATION

Model	Zone	Section	System	Envt	REMOTE REFRIGERATION					GLYCOL / R744 REFRIGERATION			
					SST (°F)	Conv. Rack BTUH	Para. Rack BTUH	Defrost Interval (Hrs)	Defrost Duration	Total GPM	Pressure Drop (psi)	Concent (%)	Liquid Temp (°F)

INTENDED ENVIRONMENT

Type I - Designed to operate in ambient conditions of 75°F with 55% relative humidity unless noted otherwise under Envt above.

WARMEST AVERAGE PRODUCT TEMP & INTENDED USE OF ZONES

Zone	Temp (°F)	Intended Use
1	160	Packaged heated product

REGULATORY

All Models	ETL Listed to UL 197 ETL Listed to CAN/CSA 22.2 No. 109 ETL Sanitation to NSF/ANSI 4
------------	--

IMPORTANT NOTES

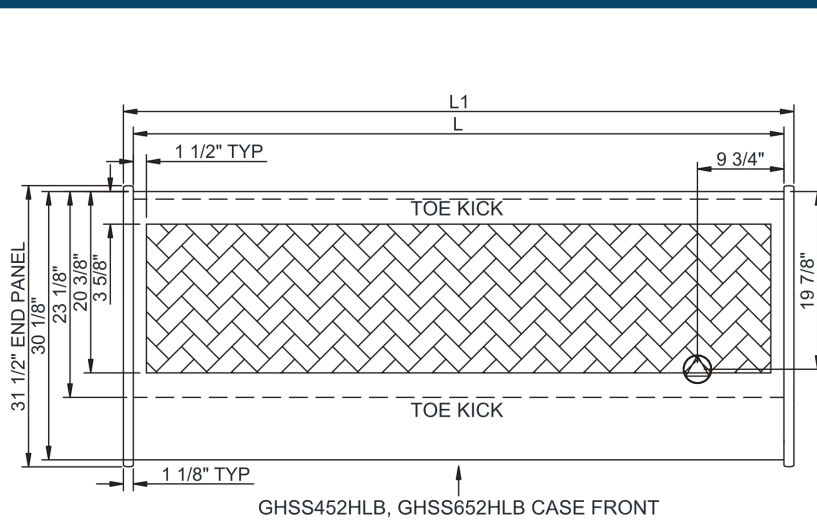
- 1) ELECTRICAL NOTE: If GFCI is required, a GFCI breaker MUST be used in lieu of a GFCI receptacle.
- 2) 34" minimum door entry clearance required (without shipping skid).
- 3) Units must be shimmed during installation to ensure the unit is level and plumb.



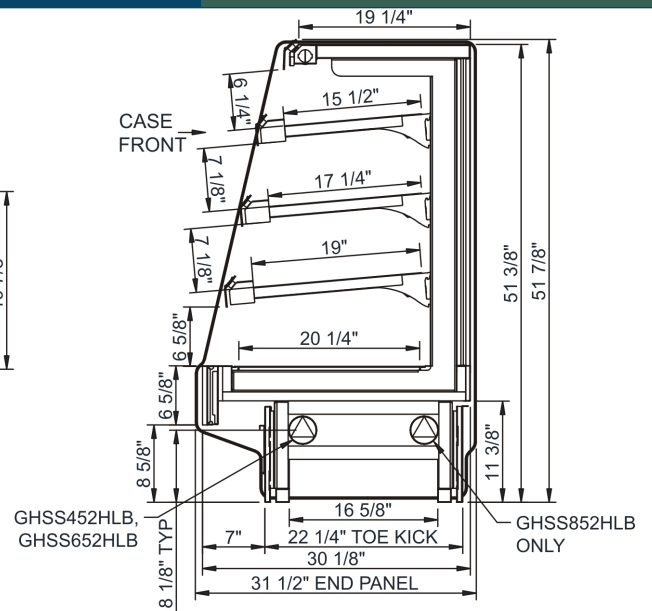
Fusion - GHSS 52"H Heated Self-Service Case

Structural Concepts®

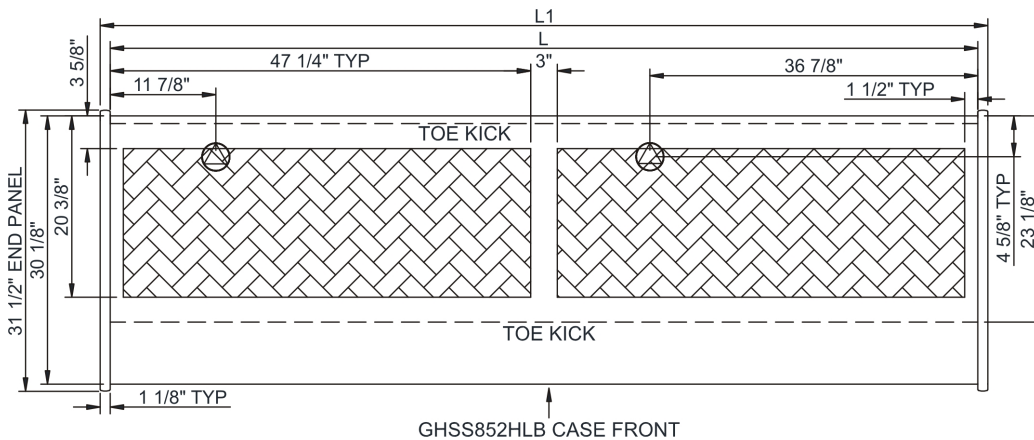
DELIVERING FRESH. ALWAYS.™



GHSS452HLB, GHSS652HLB CASE FRONT





ONLY



GHSS852HLB CASE FRONT

NOTE: ALL DIMENSIONS APPROXIMATE

-  **ELECTRICAL JUNCTION BOX**
(SUPPLIED WITH 6" LEADS OR POWER CORD).
-  **LOCATION OF DRAIN TUBE FOR REMOTE REF.**
ONLY (SUPPLIED WITH $\frac{3}{4}$ " OR $1\frac{1}{2}$ " PVC TUBE).

-  REFRIGERATION LINE CONNECTION.
-  REMOTE FLOOR SINK & UTILITIES ACCESS AREA.

-  SELF-CONTAINED CASE SERVICE ACCESS AREA.
-  DRY CASE SERVICE ACCESS AREA.