

# Fusion

GHSS 52"H Heated Self-Service Case

Structural Concepts®  
DELIVERING FRESH. ALWAYS.™

- **GHSS452HLB** 51"L x 31-1/2"D x 51-7/8"H
- **GHSS652HLB** 75-3/8"L x 31-1/2"D x 51-7/8"H
- **GHSS852HLB** 99-3/4"L x 31-1/2"D x 51-7/8"H

**Included**

- Heated deck and shelving
- LED top & shelf lights
- One year parts & labor warranty
- Stainless steel rear exterior



GHSS652HLB

Specify	Standard Features	Additional Options
EXTERIOR COLOR	<ul style="list-style-type: none"><li>• Laminate (stock colors)</li></ul>	<ul style="list-style-type: none"><li>• Laminate (non-stock colors)</li><li>• Powder coated (stock/non-stock colors)</li><li>• Powder coated Silversan Black</li><li>• Stainless steel</li></ul>
INTERIOR COLOR	<ul style="list-style-type: none"><li>• Stainless steel</li></ul>	
LOWER FRONT PANEL COLOR	<ul style="list-style-type: none"><li>• Powder coated Silversan Black</li></ul>	<ul style="list-style-type: none"><li>• Powder coated (stock/non-stock colors)</li><li>• Stainless steel</li></ul>
BASE SUPPORT	<ul style="list-style-type: none"><li>• Rail system for shims</li></ul>	
BUMPER FRONT	<ul style="list-style-type: none"><li>• 1" Boston bumper (specify color)</li></ul>	<ul style="list-style-type: none"><li>• 1" Stainless steel plate rail bumper</li></ul>
END PANELS	<ul style="list-style-type: none"><li>• Full w/stainless steel mirror interior</li></ul>	<ul style="list-style-type: none"><li>• Cutaway w/glass</li></ul>
PRICE TAG MOLDING	<ul style="list-style-type: none"><li>• None</li></ul>	<ul style="list-style-type: none"><li>• Acrylic product stops w/sign channel</li></ul>
REAR DOORS	<ul style="list-style-type: none"><li>• None (solid back panel)</li></ul>	<ul style="list-style-type: none"><li>• Reflective glass rear sliding doors</li></ul>
SHELVING	<ul style="list-style-type: none"><li>• Solid heated shelves, 3 levels</li></ul>	
LIGHTS	<ul style="list-style-type: none"><li>• LED 3500K w/ frosted lens</li></ul>	<ul style="list-style-type: none"><li>• LED 4000K w/ frosted lens</li></ul>
ELECTRICAL CONNECTION	<ul style="list-style-type: none"><li>• Electrical leads</li></ul>	

# Fusion

GHSS 52"H Heated Self-Service Case

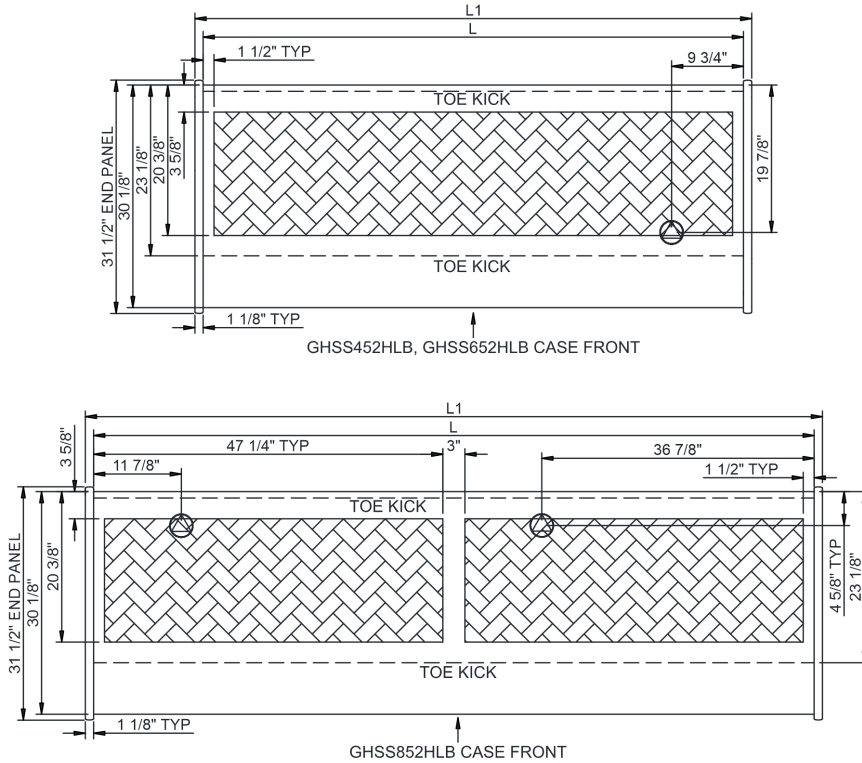
**Structural Concepts®**

DELIVERING FRESH. ALWAYS.™

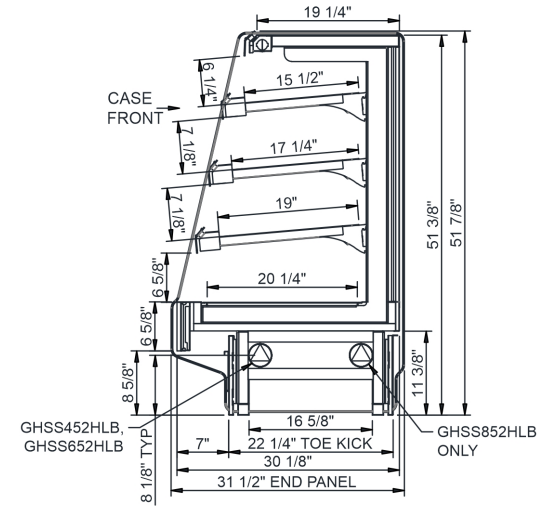
**Intended Environment:** Type I - Designed to operate in ambient conditions of 75°F with 55% relative humidity unless noted otherwise in system information below.

Zone	Intended Product To Be Displayed	Warmest Avg Prod Temp ° F
1	Packaged heated product	160

**PLAN VIEW**



**SIDE VIEW**



**NOTE: ALL DIMENSIONS APPROXIMATE**

- ELECTRICAL JUNCTION BOX**  
(SUPPLIED WITH 6" LEADS OR POWER CORD).
- REMOTE FLOOR SINK & UTILITIES**  
ACCESS AREA.
- LOCATION OF DRAIN TUBE FOR REMOTE REF.**  
ONLY (SUPPLIED WITH 3/4" OR 1 1/2" PVC TUBE).

- REFRIGERATION LINE CONNECTION.**
- SELF-CONTAINED CASE SERVICE ACCESS AREA.**
- DRY CASE SERVICE ACCESS AREA.**

**Model Technical Specifications**

Model Technical Specifications																
Model	L"	L1"	L2"	System Circuit Volts			Phs	Freq	Amps ***	Watts	Wires	NEMA Plug	SST	Conv. Rack RTU/H	Para. Rack RTU/H	Est Wt
GHSS452HLB	48.75	51.00	.00	Heat (N/A)	Circuit #1	208	1	50-60	22.29	4,655	2+G	Leads Single	N/A	N/A	N/A	550
						240	1	50-60	25.65	6,166	2+G	Leads Single	N/A	N/A	N/A	
						208	3	50-60	17.13	4,655	3+G	Leads Single	N/A	N/A	N/A	
						240	3	50-60	19.70	6,166	3+G	Leads Single	N/A	N/A	N/A	
GHSS652HLB	73.13	75.38	.00	Heat (N/A)	Circuit #1	208	1	50-60	32.06	6,589	2+G	Leads Single	N/A	N/A	N/A	925
						240	1	50-60	36.78	8,721	2+G	Leads Single	N/A	N/A	N/A	
						208	3	50-60	23.94	6,589	3+G	Leads Single	N/A	N/A	N/A	
						240	3	50-60	27.48	8,721	3+G	Leads Single	N/A	N/A	N/A	
GHSS852HLB	97.50	99.75	.00	Heat (N/A)	Circuit #1	208	1	50-60	22.29	4,655	2+G	Leads Single	N/A	N/A	N/A	1,120
						240	1	50-60	25.65	6,166	2+G	Leads Single	N/A	N/A	N/A	
						208	3	50-60	17.13	4,655	3+G	Leads Single	N/A	N/A	N/A	
						240	3	50-60	19.70	6,166	3+G	Leads Single	N/A	N/A	N/A	
				Heat (N/A)	Circuit #2	208	1	50-60	22.29	4,655	2+G	Leads Single	N/A	N/A	N/A	
						240	1	50-60	25.65	6,166	2+G	Leads Single	N/A	N/A	N/A	
						208	3	50-60	17.13	4,655	3+G	Leads Single	N/A	N/A	N/A	
						240	3	50-60	19.70	6,166	3+G	Leads Single	N/A	N/A	N/A	

\*\*\* Does not include electric defrost on freezer models.

**Regulatory Approvals:**

All Models	ETL Listed to UL 197
	ETL Listed to CAN/CSA 22.2 No. 109
	ETL Sanitation to NSF/ANSI 4



**Important Notes:**

- 1) ELECTRICAL NOTE: If GFCI is required, a GFCI breaker MUST be used in lieu of a GFCI receptacle.
- 2) 34" minimum door entry clearance required (without shipping skid).
- 3) Units must be shimmed during installation to ensure the unit is level and plumb.

**⚠ WARNING:** This product can expose you to chemicals, including Urethane (Ethyl Carbamate), which are known to the State of California to cause cancer and birth defects or other reproductive harm. For more information go to [www.P65Warnings.ca.gov](http://www.P65Warnings.ca.gov).