

# Fusion

GHSV 52"H Refrigerated Service Case

Structural Concepts®  
DELIVERING FRESH. ALWAYS.™

(Lengths do not include 1-1/8" end panels)

- **GHSV452RLB** 48-3/4"L x 42-3/4"D x 51-3/4"H
- **GHSV552RLB** 60-5/8"L x 42-3/4"D x 51-3/4"H
- **GHSV652RLB** 73-1/8"L x 42-3/4"D x 51-3/4"H
- **GHSV852RLB** 97-1/2"L x 42-3/4"D x 51-3/4"H
- **GHSV1052RLB** 121-1/8"L x 42-3/4"D x 51-3/4"H
- **GHSV1252RLB** 146-1/4"L x 42-3/4"D x 51-3/4"H

### Included

- Integrated average product temperature of 40°F or less
- LED top & shelf lights
- One year parts & labor warranty
- Remote DX refrigeration
- Stainless steel rear exterior
- Vertical swing out front glass



GHSV452RLB

Specify	Standard Features	Additional Options
<b>EXTERIOR COLOR</b>	<ul style="list-style-type: none"><li>• Laminate (stock colors)</li></ul>	<ul style="list-style-type: none"><li>• Laminate (non-stock colors)</li><li>• Powder coated (stock/non-stock colors)</li><li>• Powder coated Silversan Black</li><li>• Stainless steel</li></ul>
<b>INTERIOR COLOR</b>	<ul style="list-style-type: none"><li>• Powder coated Silversan Black</li></ul>	<ul style="list-style-type: none"><li>• Stainless steel</li></ul>
<b>LOWER FRONT PANEL COLOR</b>	<ul style="list-style-type: none"><li>• Powder coated Silversan Black</li></ul>	<ul style="list-style-type: none"><li>• Powder coated (stock/non-stock colors)</li><li>• Stainless steel</li></ul>
<b>BASE SUPPORT</b>	<ul style="list-style-type: none"><li>• Rail system for shims</li></ul>	
<b>BUMPER FRONT</b>	<ul style="list-style-type: none"><li>• 1" Boston bumper (specify color)</li></ul>	<ul style="list-style-type: none"><li>• 1" Stainless steel plate rail bumper</li></ul>
<b>END PANELS</b>	<ul style="list-style-type: none"><li>• Full w/stainless steel mirror interior</li></ul>	<ul style="list-style-type: none"><li>• Cutaway w/glass</li><li>• None (specify per line-up)</li></ul>
<b>SCALE STAND</b>	<ul style="list-style-type: none"><li>• None</li></ul>	<ul style="list-style-type: none"><li>1. Scale stand w/ receptacle &amp; CAT5 (specify location)</li><li>• Scale stand w/ receptacle (specify location)</li></ul>
<b>PRICE TAG MOLDING</b>	<ul style="list-style-type: none"><li>• None</li></ul>	<ul style="list-style-type: none"><li>• 1" Price tag molding (black or silver)</li><li>• Universal price tag molding (clear w/ open top)</li></ul>
<b>REAR DOORS</b>	<ul style="list-style-type: none"><li>• Clear glass rear sliding doors</li></ul>	<ul style="list-style-type: none"><li>• Reflective glass rear sliding doors</li></ul>
<b>SHELVING</b>	<ul style="list-style-type: none"><li>• 12" &amp; 16" &amp; 18" Solid shelving</li></ul>	<ul style="list-style-type: none"><li>• 12" &amp; 16" &amp; 18" Glass shelving</li></ul>
<b>LIGHTS</b>	<ul style="list-style-type: none"><li>• LED 3500K w/ frosted lens</li></ul>	<ul style="list-style-type: none"><li>• LED 4000K w/ frosted lens</li></ul>
<b>ELECTRICAL CONNECTION</b>	<ul style="list-style-type: none"><li>• Electrical leads (remote)</li></ul>	
<b>REFRIGERATION</b>	<ul style="list-style-type: none"><li>• Remote DX refrigeration</li></ul>	<ul style="list-style-type: none"><li>• Remote w/thermostat, solenoid &amp; TXV</li></ul>
<b>SENSOR</b>	<ul style="list-style-type: none"><li>• None</li></ul>	<ul style="list-style-type: none"><li>• CPC discharge air sensor (remote)</li></ul>
<b>MISCELLANEOUS</b>		<ul style="list-style-type: none"><li>• Rear door lock</li></ul>
<b>ACCESSORIES</b>		<ul style="list-style-type: none"><li>• Drain strainer</li></ul>

Option Notes: 1 - Separate circuit required

# Fusion

GHSV 52"H Refrigerated Service Case

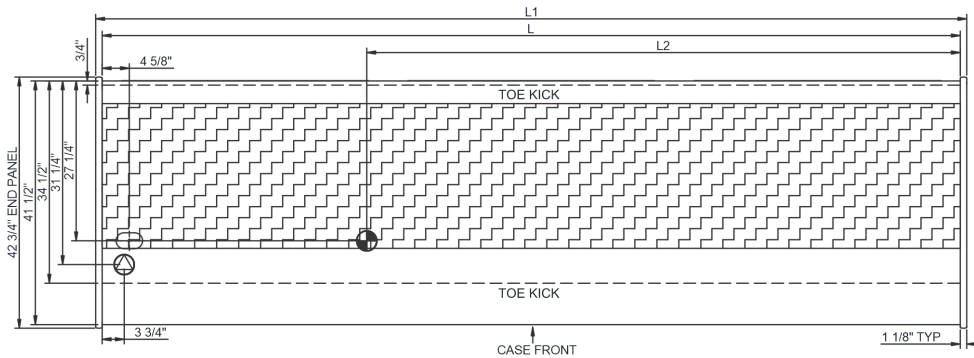
Structural Concepts®

DELIVERING FRESH. ALWAYS.™

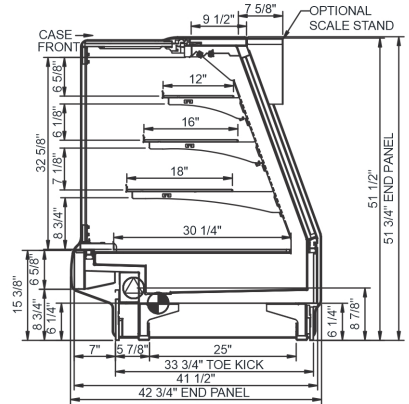
**Intended Environment:** Type I - Designed to operate in ambient conditions of 75°F with 55% relative humidity unless noted otherwise in system information below.

Zone	Intended Product To Be Displayed	Warmest Avg Prod Temp ° F
1	Unpackaged refrigerated products	40

PLAN VIEW



SIDE VIEW



NOTE: ALL DIMENSIONS APPROXIMATE

ELECTRICAL JUNCTION BOX (SUPPLIED WITH 6\"/>

REFRIGERATION LINE CONNECTION.  
 REMOTE FLOOR SINK & UTILITIES ACCESS AREA.

SELF-CONTAINED CASE SERVICE ACCESS AREA.  
 DRY CASE SERVICE ACCESS AREA.

Model Technical Specifications														
Model	L"	L1"	L2"	System Circuit Volts			Phs	Freq	Amps ***	Watts	Wires	NEMA Plug	SST	Conv. Rack BTU/H
GHSV452RLB	48.75	51.00	3.50	Remote (DX)	Circuit #1	110-120	1	60	1.84	61	2+G	Leads Multiple	20.00	1728
GHSV552RLB	60.63	62.88	3.50	Remote (DX)	Circuit #1	110-120	1	60	1.92	78	2+G	Leads Single	24.00	2246
GHSV652RLB	73.13	75.38	3.50	Remote (N/A)	Circuit #1	110-120	1	60	2.02	190	2+G	Leads Multiple	20.00	2614
				Remote (R744 TRANSCRIT)	Circuit #1	110-120	1	60	2.02	190	2+G	Leads Multiple		2614
GHSV852RLB	97.50	99.75	3.50	Remote (DX)	Circuit #1	110-120	1	60	3.08	201	2+G	Leads Single	20.00	3283
				Remote (R744 TRANSCRIT)	Circuit #1	110-120	1	60	3.08	201	2+G	Leads Multiple		3283
GHSV1052RLB	121.13	123.38	80.63	Remote (DX)	Circuit #1	110-120	1	60	3.84	157	2+G	Leads Single	20.00	4104
GHSV1252RLB	146.25	148.50	101.13	Remote (DX)	Circuit #1	110-120	1	60	4.95	203	2+G	Leads Multiple	20.00	4882

\*\*\* Does not include electric defrost on freezer models.

## Regulatory Approvals:

All Models  
 Accordance with AHRI Std 1200  
 ETL Listed to UL 471  
 ETL Listed to CAN/CSA 22.2 No. 120  
 ETL Sanitation to NSF/ANSI 7

In Accordance with  
**AHRI Std 1200**

**DOE 2017**  
 Energy Efficiency  
 Compliant

## Important Notes:

- 1) ELECTRICAL NOTE: If GFCI is required, a GFCI breaker MUST be used in lieu of a GFCI receptacle.
- 2) 45" minimum door entry clearance required (without shipping skid).
- 3) Units must be shimmed during installation to ensure the unit is level and plumb.

**⚠ WARNING:** This product can expose you to chemicals, including Urethane (Ethyl Carbamate), which are known to the State of California to cause cancer and birth defects or other reproductive harm. For more information go to [www.P65Warnings.ca.gov](http://www.P65Warnings.ca.gov).