

# Technical Information

Fusion - GHSS 60"H Refrigerated Self-Service Case w/ Curved Profile

Structural Concepts®

DELIVERING FRESH. ALWAYS.™

## DIMENSIONS / SHIPPING

Model	L"	L1"	L2"	Est Wt (lbs)
GHSS460RLB	48.750	51.000	3.500	N/A
GHSS560RLB	60.625	62.875	3.500	N/A
GHSS660RLB	73.125	75.375	3.500	N/A
GHSS860RLB	97.500	99.750	3.500	N/A
GHSS1060RLB	121.125	123.375	40.500	N/A
GHSS1260RLB	146.250	148.500	45.125	N/A

## ELECTRICAL

Model	System Circuit Volts			Ph	Frq	Rated Load Amps	Min Cir Amps	Max OCP Amps	Watts	Wires	NEMA Plug	Amps Lights	Amps Fans	Amps Anti-Sweats	Amps Misc/Refrig/Heat
GHSS460RLB	Remote (DX)	Circuit #1	110-120	1	60	1.48	15	15	81	2+G	Leads Multiple	0.70	0.60	0.18	N/A
GHSS560RLB	Remote (DX)	Circuit #1	110-120	1	60	2.54	15	15	148	2+G	Leads Single	1.40	0.90	0.24	N/A
GHSS660RLB	Remote (DX)	Circuit #1	110-120	1	60	2.62	15	15	193	2+G	Leads Multiple	1.40	0.93	0.29	N/A
	Remote (GLYCOL)	Circuit #1	110-120	1	60	2.67	15	15	193	2+G	Leads Multiple	1.40	0.93	0.29	0.05
GHSS860RLB	Remote (DX)	Circuit #1	110-120	1	60	3.00	15	15	249	2+G	Leads Multiple	1.40	1.24	0.36	N/A
	Remote (GLYCOL)	Circuit #1	110-120	1	60	3.05	15	15	249	2+G	Leads Multiple	1.40	1.24	0.36	0.05
GHSS1060RLB	Remote (DX)	Circuit #1	110-120	1	60	3.86	15	15	295	2+G	Leads Multiple	2.10	1.24	0.47	0.05
	Remote (GLYCOL)	Circuit #1	110-120	1	60	3.86	15	15	295	2+G	Leads Multiple	2.10	1.24	0.47	0.05
GHSS1260RLB	Remote (DX)	Circuit #1	110-120	1	60	4.59	15	15	384	2+G	Leads Multiple	2.10	1.86	0.55	0.08

## REFRIGERATION

Model	Zone	Section	System	Envt	REMOTE REFRIGERATION					GLYCOL / R744 REFRIGERATION			
					SST (°F)	Conv. Rack BTUH	Para. Rack BTUH	Defrost Interval (Hrs)	Defrost Duration	Total GPM	Pressure Drop (psi)	Concent (%)	Liquid Temp (°F)
GHSS460RLB	All	Main	Remote-DX	Type I	20	5,625	5,208	4.00	30.00	N/A	N/A	N/A	N/A
GHSS560RLB	All	Main	Remote-DX	Type I	20	7,042	6,520	4.00	30.00	N/A	N/A	N/A	N/A
GHSS660RLB	All	Main	Remote-DX	Type I	20	9,223	8,540	4.00	30.00	N/A	N/A	N/A	N/A
	All	Refrigerator	Remote-Glycol	Type I	N/A	9,223	8,540	4.00	30.00	5.50	15.60	35%	20.00
GHSS860RLB	All	Main	Remote-DX	Type I	20	12,053	11,160	4.00	30.00	N/A	N/A	N/A	N/A
	All	Refrigerator	Remote-Glycol	Type I	N/A	12,053	11,160	4.00	30.00	4.00	13.10	35%	20.00
GHSS1060RLB	All	Main	Remote-DX	Type I	20	13,932	12,900	4.00	30.00	N/A	N/A	N/A	N/A
	All	Refrigerator	Remote-Glycol	Type I	N/A	13,932	12,900	4.00	30.00	7.00	17.10	35%	20.00
GHSS1260RLB	All	Main	Remote-DX	Type I	20	14,515	13,440	4.00	30.00	N/A	N/A	N/A	N/A

## INTENDED ENVIRONMENT

Type I - Designed to operate in ambient conditions of 75°F with 55% relative humidity unless noted otherwise under Envt above.

## WARMEST AVERAGE PRODUCT TEMP & INTENDED USE OF ZONES

Zone	Temp (°F)	Intended Use
1	40	Packaged refrigerated products

## IMPORTANT NOTES

- 1) ELECTRICAL NOTE: If GFCI is required, a GFCI breaker MUST be used in lieu of a GFCI receptacle.
- 2) 45" minimum door entry clearance required (without shipping skid).
- 3) Units must be shimmed during installation to ensure the unit is level and plumb.

## REGULATORY

All Models  
 Accordance with AHRI Std 1200  
 ETL Listed to UL 471  
 ETL Listed to CAN/CSA 22.2 No. 120  
 ETL Sanitation to NSF/ANSI 7



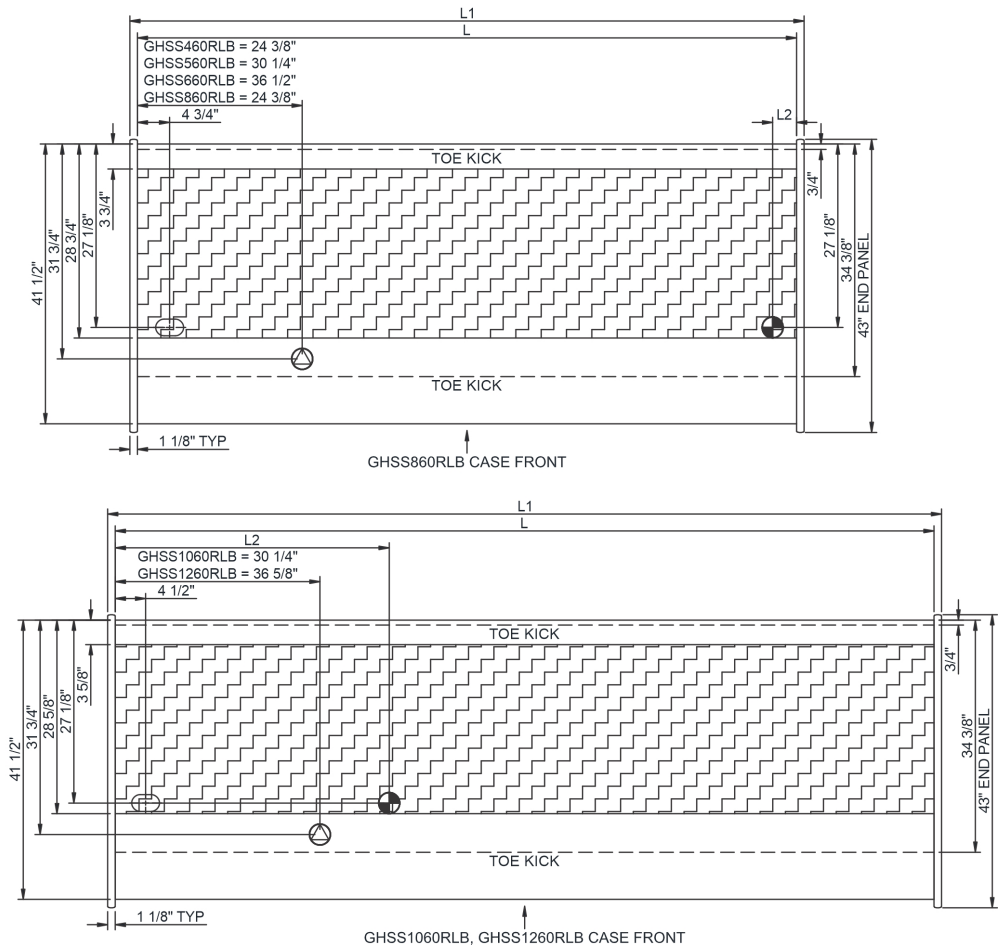
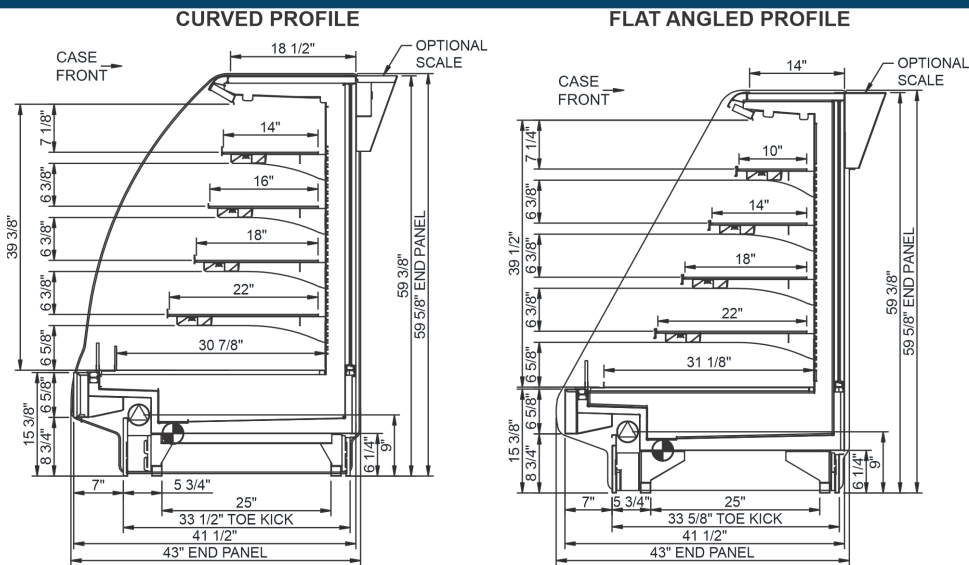
In Accordance with  
**AHRI Std 1200**

# Technical Information

Fusion - GHSS 60"H Refrigerated Self-Service Case w/ Curved Profile

Structural Concepts®

DELIVERING FRESH. ALWAYS.™



NOTE: ALL DIMENSIONS APPROXIMATE

- ELECTRICAL JUNCTION BOX (SUPPLIED WITH 6" LEADS OR POWER CORD).
- REFRIGERATION LINE CONNECTION.
- SELF-CONTAINED CASE SERVICE ACCESS AREA.
- LOCATION OF DRAIN TUBE FOR REMOTE REF. ONLY (SUPPLIED WITH 3/4" OR 1 1/2" PVC TUBE).
- REMOTE FLOOR SINK & UTILITIES ACCESS AREA.
- DRY CASE SERVICE ACCESS AREA.