

Technical Information

Fusion - GHSV 56"H Refrigerated Service Case

Structural Concepts®

DELIVERING FRESH. ALWAYS.™

DIMENSIONS / SHIPPING

| Model | L" | L1" | L2" | Est Wt (lbs) |
|-------------|---------|---------|---------|--------------|
| GHSV456RLB | 48.750 | 51.000 | 3.625 | 800 |
| GHSV556RLB | 60.500 | 62.750 | 3.625 | 900 |
| GHSV656RLB | 73.125 | 75.375 | 3.625 | 1,285 |
| GHSV856RLB | 97.500 | 99.750 | 3.625 | 1,500 |
| GHSV1256RLB | 146.250 | 148.500 | 101.125 | 1,700 |

ELECTRICAL

| Model | System Circuit Volts | | Ph | Frq | Rated Load Amps | Min Cir Amps | Max OCP Amps | Watts | Wires | NEMA Plug | Amps Lights | Amps Fans | Amps Anti-Sweats | Amps Misc/Refrig/Heat | |
|-------------|----------------------------|------------|---------|-----|-----------------|--------------|--------------|-------|-------|-----------|----------------|-----------|------------------|-----------------------|------|
| GHSV456RLB | Remote (DX) | Circuit #1 | 110-120 | 1 | 60 | 1.84 | 15 | 15 | 83 | 2+G | Leads Multiple | 0.70 | 0.30 | 0.84 | N/A |
| GHSV556RLB | Remote (DX) | Circuit #1 | 110-120 | 1 | 60 | 2.94 | 15 | 15 | 142 | 2+G | Leads Single | 1.40 | 0.62 | 0.92 | N/A |
| GHSV656RLB | Remote (DX) | Circuit #1 | 110-120 | 1 | 60 | 2.96 | 15 | 15 | 158 | 2+G | Leads Multiple | 1.40 | 0.60 | 0.96 | N/A |
| GHSV856RLB | Remote (DX)-Type I Env | Circuit #1 | 110-120 | 1 | 60 | 3.76 | 15 | 15 | 176 | 2+G | Leads Multiple | 2.80 | 0.60 | 1.06 | N/A |
| | Remote (GLYCOL)-Type I Env | Circuit #1 | 110-120 | 1 | 60 | 4.51 | 15 | 15 | 131 | 2+G | Leads Multiple | 2.80 | 0.60 | 1.06 | 0.05 |
| | Remote (R744 T)-Type I Env | Circuit #1 | 110-120 | 1 | 60 | 3.76 | 15 | 15 | 147 | 2+G | Leads Multiple | 2.80 | 0.60 | 1.06 | N/A |
| GHSV1256RLB | Remote (DX) | Circuit #1 | 110-120 | 1 | 60 | 4.95 | 15 | 15 | 265 | 2+G | Leads Multiple | 2.10 | 0.90 | 1.95 | N/A |
| | Remote (R744 T) | Circuit #1 | 110-120 | 1 | 60 | 4.95 | 15 | 15 | 265 | 2+G | Leads Multiple | 2.10 | 0.90 | 1.95 | N/A |

REFRIGERATION

| Model | Zone | Section | System | Envt | REMOTE REFRIGERATION | | | | | GLYCOL / R744 REFRIGERATION | | | |
|-------------|------|--------------|--------------------------------------|--------|----------------------|-----------------|-----------------|------------------------|------------------|-----------------------------|---------------------|-------------|------------------|
| | | | | | SST (°F) | Conv. Rack BTUH | Para. Rack BTUH | Defrost Interval (Hrs) | Defrost Duration | Total GPM | Pressure Drop (psi) | Concent (%) | Liquid Temp (°F) |
| GHSV456RLB | All | Main | Remote-DX | Type I | 24 | 2,030 | 1,880 | 4.00 | 30.00 | N/A | N/A | N/A | N/A |
| GHSV556RLB | All | Refrigerator | Remote-DX | Type I | 20 | 2,916 | 2,700 | 4.00 | 30.00 | N/A | N/A | N/A | N/A |
| GHSV656RLB | All | Main | Remote-DX | Type I | 20 | 3,154 | 2,920 | 4.00 | 30.00 | N/A | N/A | N/A | N/A |
| GHSV856RLB | All | Main | Remote-DX-Type I Env | Type I | 20 | 4,061 | 3,760 | 4.00 | 30.00 | N/A | N/A | N/A | N/A |
| | All | Main | Remote-Glycol-Type I Env | Type I | N/A | 4,061 | 3,760 | 4.00 | 45.00 | 1.25 | 4.00 | 35% | 20.00 |
| | All | Main | Remote-R744 TRANSCRITICAL-Type I Env | Type I | 20 | 4,061 | 3,760 | 4.00 | 30.00 | N/A | N/A | N/A | N/A |
| GHSV1256RLB | All | Main | Remote-DX | Type I | 20 | 6,048 | 5,600 | 4.00 | 30.00 | N/A | N/A | N/A | N/A |
| | All | Main | Remote-R744 TRANSCRITICAL | Type I | 20 | 6,048 | 5,600 | 4.00 | 30.00 | N/A | N/A | N/A | N/A |

INTENDED ENVIRONMENT

Type I - Designed to operate in ambient conditions of 75°F with 55% relative humidity unless noted otherwise under Envt above.

WARMEST AVERAGE PRODUCT TEMP & INTENDED USE OF ZONES

| Zone | Temp (°F) | Intended Use |
|------|-----------|----------------------------------|
| 1 | 40 | Unpackaged refrigerated products |

IMPORTANT NOTES

- 1) REMOTE REFRIGERATION NOTE: Condensing unit not included, floor drain required.
- 2) ELECTRICAL NOTE: If GFCI is required, a GFCI breaker MUST be used in lieu of a GFCI receptacle.
- 3) 45" minimum door entry clearance required (without shipping skid).
- 4) Units must be shimmed during installation to ensure the unit is level and plumb.

REGULATORY

| | |
|------------|---|
| All Models | Accordance with AHRI Std 1200 ETL Listed to UL 471 ETL Listed to CAN/CSA 22.2 No. 120 ETL Sanitation to NSF/ANSI 7 |
|------------|---|



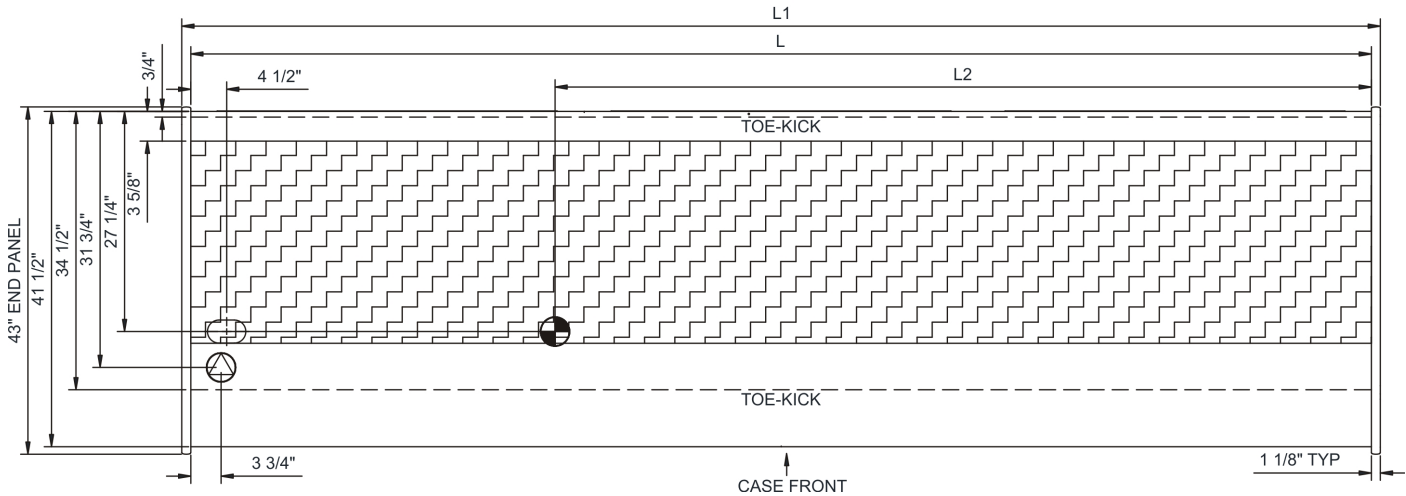
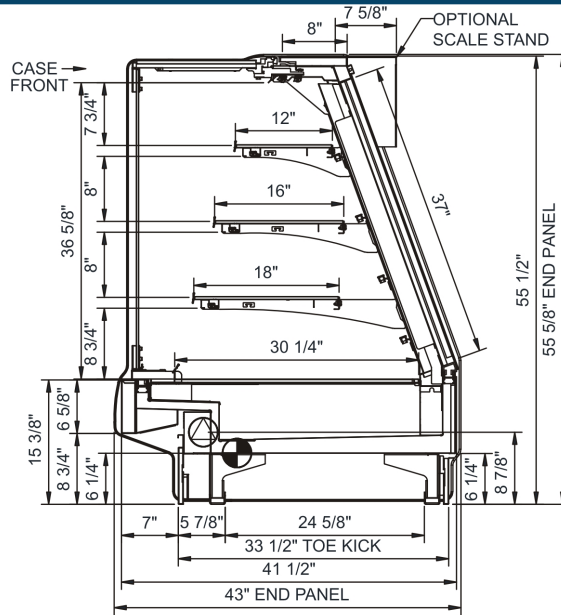
In Accordance with
AHRI Std 1200

Technical Information



Fusion - GHSV 56"H Refrigerated Service Case

Structural Concepts®

DELIVERING FRESH. ALWAYS.™



NOTE: ALL DIMENSIONS APPROXIMATE

-  ELECTRICAL JUNCTION BOX (SUPPLIED WITH 6" LEADS OR POWER CORD).
-  LOCATION OF DRAIN TUBE FOR REMOTE REF. ONLY (SUPPLIED WITH 3/4" OR 1 1/2" PVC TUBE).

-  REFRIGERATION LINE CONNECTION.
-  REMOTE FLOOR SINK & UTILITIES ACCESS AREA.

-  SELF-CONTAINED CASE SERVICE ACCESS AREA.
-  DRY CASE SERVICE ACCESS AREA.