

# Fusion

GLDSS 43"H Refrigerated Self-Service Case

Structural Concepts®  
DELIVERING FRESH. ALWAYS.™

- GLDSS443R 50-3/4"L x 46-7/8"D x 43-3/8"H
- GLDSS543R 62-5/8"L x 46-7/8"D x 43-3/8"H
- GLDSS643R 75-1/8"L x 46-7/8"D x 43-3/8"H
- GLDSS843R 99-1/2"L x 46-7/8"D x 43-3/8"H
- GLDSS1043R 123-1/8"L x 46-7/8"D x 43-3/8"H
- GLDSS1243R 148-1/4"L x 46-7/8"D x 43-3/8"H

### Included

- Remote DX refrigeration
- One year parts & labor warranty
- Stainless steel rear exterior
- Warmest average product temperature of 40°F or less



GLDSS643R

Specify	Standard Features	Additional Options
EXTERIOR COLOR	<ul style="list-style-type: none"><li>• Laminate (stock colors)</li></ul>	<ul style="list-style-type: none"><li>• Laminate (non-stock colors)</li><li>• Powder coated (stock/non-stock colors)</li><li>• Powder coated Silversan Black</li><li>• Stainless steel</li></ul>
INTERIOR COLOR	<ul style="list-style-type: none"><li>• Powder coated Silversan Black</li></ul>	<ul style="list-style-type: none"><li>• Stainless steel</li></ul>
LOWER FRONT PANEL COLOR	<ul style="list-style-type: none"><li>• Powder coated Silversan Black</li></ul>	<ul style="list-style-type: none"><li>• Powder coated (stock/non-stock colors)</li><li>• Stainless steel</li></ul>
BASE SUPPORT	<ul style="list-style-type: none"><li>• Rail system for shims</li></ul>	
BUMPER FRONT	<ul style="list-style-type: none"><li>• 1" Boston bumper (specify color)</li></ul>	<ul style="list-style-type: none"><li>• 1" Stainless steel plate rail bumper</li></ul>
DISPLAY	<ul style="list-style-type: none"><li>• None</li></ul>	<ul style="list-style-type: none"><li>• 2"H Full depth display riser(s)</li><li>• 4"H Full depth display riser(s)</li></ul>
END PANELS	<ul style="list-style-type: none"><li>• Full w/stainless steel mirror interior</li></ul>	<ul style="list-style-type: none"><li>• Cutaway w/glass</li><li>• None (specify per line-up)</li></ul>
REAR LEDGE	<ul style="list-style-type: none"><li>• Black Sanalite®</li></ul>	<ul style="list-style-type: none"><li>• Stainless steel</li></ul>
ELECTRICAL CONNECTION	<ul style="list-style-type: none"><li>• Electrical leads (remote)</li></ul>	
REFRIGERATION	<ul style="list-style-type: none"><li>• Remote DX refrigeration</li></ul>	<ul style="list-style-type: none"><li>• Remote w/thermostat, solenoid &amp; TXV</li></ul>
SENSOR	<ul style="list-style-type: none"><li>• None</li></ul>	<ul style="list-style-type: none"><li>• CPC discharge air sensor (remote)</li></ul>
ACCESSORIES		<ul style="list-style-type: none"><li>• Drain strainer</li></ul>

# Fusion

GLDSS 43"H Refrigerated Self-Service Case

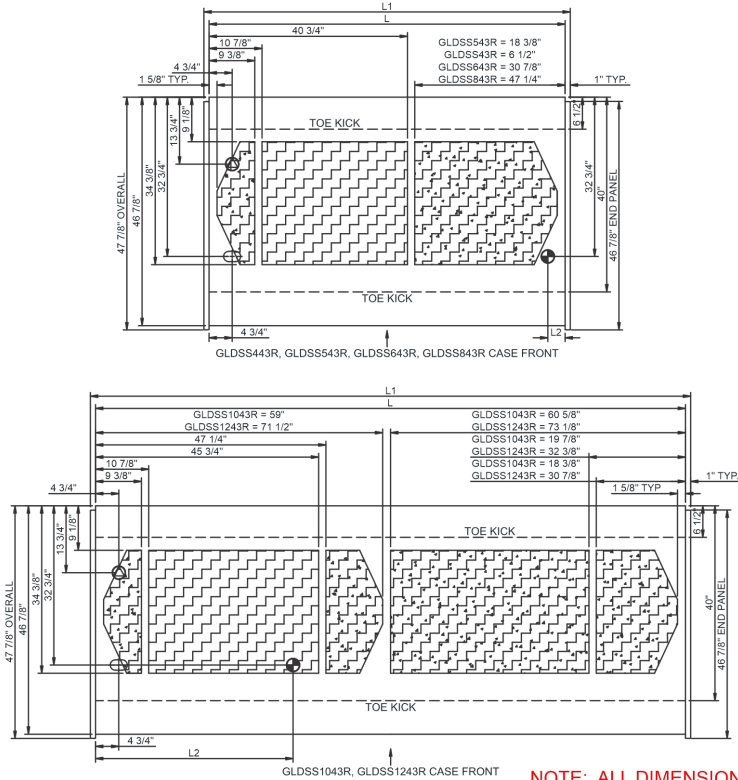
**Structural Concepts®**

DELIVERING FRESH. ALWAYS.™

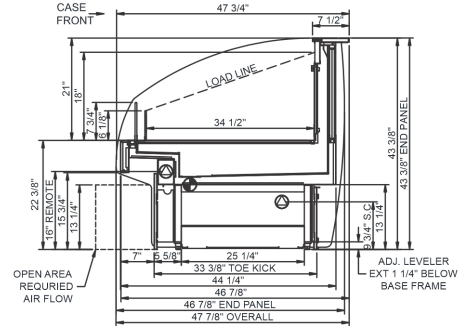
**Intended Environment:** Type I - Designed to operate in ambient conditions of 75°F with 55% relative humidity unless noted otherwise in system information below.

Zone	Intended Product To Be Displayed	Warmest Avg Prod Temp ° F
1	Packaged refrigerated products	40

**PLAN VIEW**



**SIDE VIEW**



**NOTE: ALL DIMENSIONS APPROXIMATE**

- ELECTRICAL JUNCTION BOX**  
(SUPPLIED WITH 6\" LEADS OR POWER CORD).
- LOCATION OF DRAIN TUBE FOR REMOTE REF.**  
ONLY (SUPPLIED WITH 3/4\" OR 1 1/2\" PVC TUBE).

- REFRIGERATION LINE CONNECTION.**
- REMOTE FLOOR SINK & UTILITIES ACCESS AREA.**

- SELF-CONTAINED CASE SERVICE ACCESS AREA.**
- DRY CASE SERVICE ACCESS AREA.**

**Model Technical Specifications**

Model Technical Specifications																
Model	L"	L1"	L2"	System Circuit Volts			Phs	Freq	Amps ***	Watts	Wires	NEMA Plug	SST	Conv. Rack BTU/H	Para. Rack BTU/H	Est Wt
GLDSS443R	48.75	50.75	3.50	Remote (DX)	Circuit #1	110-120	1	60	0.48	36	2+G	Leads Multiple	20.00	3283	3040	700
				Remote (GLYCOL 35%)	Circuit #1	110-120	1	60	0.48	36	2+G	Leads Multiple	20.00	3283	3040	
GLDSS543R	60.63	62.63	3.50	Remote (DX)	Circuit #1	110-120	1	60	1.07	85	2+G	Leads Multiple	20.00	4061	3760	800
GLDSS643R	73.13	75.13	3.50	Remote (DX)	Circuit #1	110-120	1	60	1.14	93	2+G	Leads Single	20.00	4838	4480	900
				Remote (GLYCOL 35%)	Circuit #1	110-120	1	60	1.14	93	2+G	Leads Single	20.00	4838	4480	
GLDSS843R	97.50	99.50	3.50	Remote (DX)	Circuit #1	110-120	1	60	0.97	72	2+G	Leads Multiple	20.00	6480	6000	1,500
GLDSS1043R	121.13	123.13	40.50	Remote (DX)	Circuit #1	110-120	1	60	1.67	113	2+G	Leads Multiple	20.00	8122	7520	1,700
				Remote (GLYCOL 35%)	Circuit #1	110-120	1	60	1.67	113	2+G	Leads Multiple	20.00	8122	7520	
GLDSS1243R	146.25	148.25	45.25	Remote (DX)	Circuit #1	110-120	1	60	1.45	108	2+G	Leads Multiple	24.00	9613	8901	1,700
				Remote (GLYCOL 35%)	Circuit #1	110-120	1	60	1.45	108	2+G	Leads Multiple	20.00	9613	8901	

\*\*\* Does not include electric defrost on freezer models.

**Regulatory Approvals:**

All Models  
 Accordance with AHRI Std 1200  
 ETL Listed to UL 471  
 ETL Listed to CAN/CSA 22.2 No. 120  
 ETL Sanitation to NSF/ANSI 7

**Important Notes:**

- 1) ELECTRICAL NOTE: If GFCI is required, a GFCI breaker MUST be used in lieu of a GFCI receptacle.
- 2) 50" minimum door entry clearance required (without shipping skid).
- 3) Units must be shimmed during installation to ensure the unit is level and plumb.

**⚠ WARNING:** This product can expose you to chemicals, including Urethane (Ethyl Carbamate), which are known to the State of California to cause cancer and birth defects or other reproductive harm. For more information go to [www.P65Warnings.ca.gov](http://www.P65Warnings.ca.gov).



In Accordance with  
**AHRI Std 1200**

**DOE 2017**  
Energy Efficiency  
Compliant