

Fusion

GMBS 52"H Refrigerated Service Case

Structural Concepts®

DELIVERING FRESH. ALWAYS.™

(Lengths do not include 1-1/8" end panels)

- **GMBS452R** 48-3/4"L x 42-3/4"D x 51-5/8"H
- **GMBS552R** 60-5/8"L x 42-3/4"D x 51-5/8"H
- **GMBS652R** 73-1/8"L x 42-3/4"D x 51-5/8"H
- **GMBS852R** 97-1/2"L x 42-3/4"D x 51-5/8"H
- **GMBS1052R** 121-1/8"L x 42-3/4"D x 51-5/8"H
- **GMBS1252R** 146-1/4"L x 42-3/4"D x 51-5/8"H

Included

- LED top & shelf lights
- Lift-up front glass
- One year parts & labor; 5 year compressor warranty
- Stainless steel rear exterior
- Warmest average product temperature of 40°F or less



GMBS452R

Specify	Standard Features	Additional Options
EXTERIOR COLOR	• Laminate (stock colors)	• Laminate (non-stock colors) • Powder coated (stock/non-stock colors) • Powder coated Silversan Black • Stainless steel
INTERIOR COLOR	• Powder coated Silversan Black	• Stainless steel
LOWER FRONT PANEL COLOR	• Powder coated Silversan Black	• Powder coated (stock/non-stock colors) • Stainless steel
BASE SUPPORT	¹ • Casters w/ levelers (self-cont.)	• Rail system for shims (remote)
BUMPER FRONT	• 1" Boston bumper (specify color)	• 1" Stainless steel plate rail bumper
END PANELS	• Full w/stainless steel mirror interior	• Cutaway w/glass • None (specify per line-up)
FRONT GLASS	• Curved	• Flat angled
SCALE STAND	• None	¹ • Scale stand w/ receptacle & CAT5 (specify location) • Scale stand w/ receptacle (specify location)
PRICE TAG MOLDING	• None	• 1" Price tag molding (black or silver) • Universal price tag molding (clear w/ open top)
REAR DOORS	• Clear glass rear sliding doors	• Reflective glass rear sliding doors
SHELVING	• 16" & 16" Solid shelving	• 16" & 16" Glass shelving
LIGHTS	• LED 3500K w/ frosted lens	• LED 4000K w/ frosted lens
ELECTRICAL CONNECTION	² • 6' Straight blade power cord (self-cont.)	• 6' Locking power cord (self-cont.) • Electrical leads (remote)
REFRIGERATION	³ • Breeze self-contained refrigeration	• Remote DX refrigeration • Remote w/thermostat, solenoid & TXV
SENSOR	• None	• CPC discharge air sensor (remote)
MISCELLANEOUS		• Front glass lock • Rear door lock
ACCESSORIES		² • Clean Sweep® coil cleaner (self-cont.) • Drain strainer • Rear wrapping board, white Sanalite®

Std Notes: 1 - N/A on 10ft, 12ft
2 - N/A on 10ft, 12ft
3 - N/A on 10ft, 12ft

Option Notes: 1 - Separate circuit required
2 - N/A on 10ft, 12ft

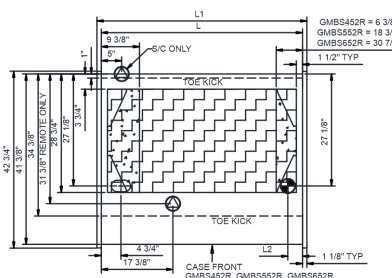
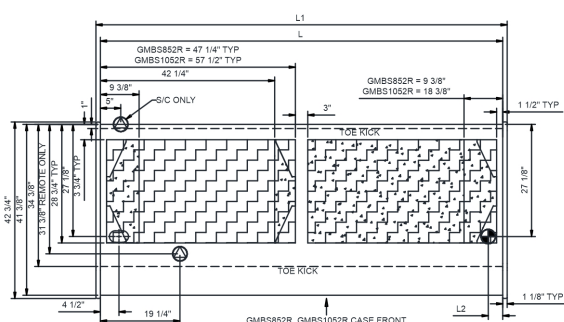
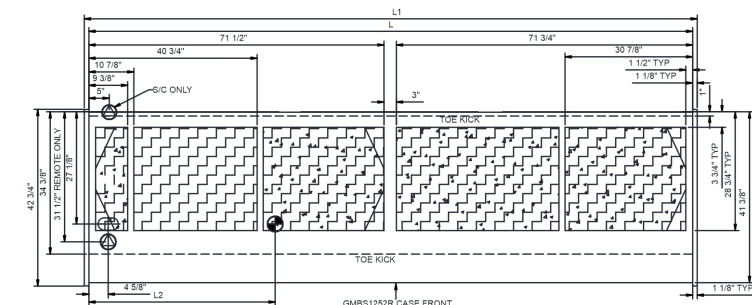
GMBS 52"H Refrigerated Service Case

DELIVERING FRESH. ALWAYS.™

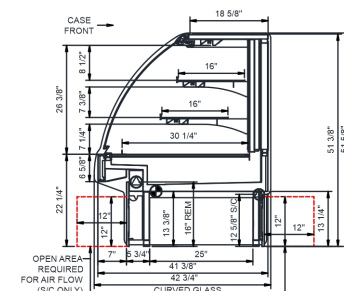
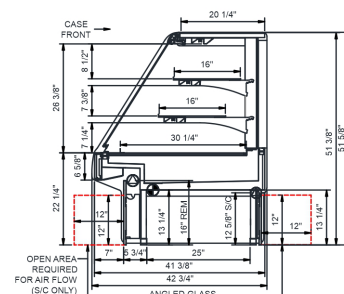
Intended Environment: Type I - Designed to operate in ambient conditions of 75°F with 55% relative humidity unless noted otherwise in system information below.

Zone	Intended Product To Be Displayed	Warmest Avg Prod Temp ° F
1	Unpackaged refrigerated products	40

PLAN VIEW



SIDE VIEW



NOTE: ALL DIMENSIONS APPROXIMATE



**ELECTRICAL JUNCTION BOX
(SUPPLIED WITH 6" LEADS OR POWER CORD)**



LOCATION OF DRAIN TUBE FOR REMOTE REF. ONLY (SUPPLIED WITH $\frac{3}{4}$ " OR $1\frac{1}{2}$ " PVC TUBE).



➔ **REFRIGERATION LINE CONNECTION.**



**REMOTE FLOOR SINK & UTILITIES
ACCESS AREA.**



SELF-CONTAINED CASE SERVICE ACCESS AREA.



DRY CASE SERVICE ACCESS AREA.

Model Technical Specifications																
Model	L"	L1"	L2"	System Circuit Volts			Phs	Freq	Amps ***	Watts	Wires	NEMA Plug	SST	Conv. Rack BTU/H	Para. Rack BTU/H	Est Wt
GMBS452R	48.75	51.00	3.50	Remote (DX)	Circuit #1	110-120	1	60	1.74	170	2+G	Leads Multiple	20.00	1339	1240	840
				Remote (GLYCOL 35%)	Circuit #1	110-120	1	60	1.74	170	2+G	Leads Multiple	20.00	1339	1240	
				Self-Contained (R513A)	Circuit #1	110-120	1	60	10.23	791	2+G	5-15P or L5-15P	N/A	N/A	N/A	
GMBS552R	60.63	62.88	3.50	Remote (DX)	Circuit #1	110-120	1	60	2.29	208	2+G	Leads Multiple	20.00	1685	1560	900
				Remote (GLYCOL 35%)	Circuit #1	110-120	1	60	2.29	208	2+G	Leads Multiple	20.00	1685	1560	
				Self-Contained (R513A)	Circuit #1	110-120	1	60	12.00	1,052	2+G	5-15P or L5-15P	N/A	N/A	N/A	
GMBS652R	73.13	75.38	3.50	Remote (DX)	Circuit #1	110-120	1	60	2.42	238	2+G	Leads Multiple	20.00	2030	1880	1,000
				Remote (GLYCOL 35%)	Circuit #1	110-120	1	60	2.42	238	2+G	Leads Multiple	-	0	0	
				Self-Contained (R513A)	Circuit #1	110-120	1	60	14.64	1,063	2+G	5-20P or L5-20P	N/A	N/A	N/A	
GMBS852R	97.50	99.75	3.50	Remote (DX)	Circuit #1	110-120	1	60	3.51	367	2+G	Leads Multiple	20.00	2722	2520	1,600
				Remote (GLYCOL 35%)	Circuit #1	110-120	1	60	3.51	367	2+G	Leads Multiple	20.00	2722	2520	
				Self-Contained (R449A)	Circuit #1	110-120	1	60	15.70	1,352	2+G	5-20P or L5-20P	N/A	N/A	N/A	
GMBS1052R	121.13	123.38	80.50	Remote (DX)	Circuit #1	110-120	1	60	4.58	416	2+G	Leads Multiple	20.00	2938	2720	2,000
				Remote (GLYCOL 35%)	Circuit #1	110-120	1	60	4.58	416	2+G	Leads Multiple	-	2938	2720	
				Self-Contained (R449A)	Circuit #1	110-120	1	60	16.00	1,509	2+G	5-20P or L5-20P	N/A	N/A	N/A	
GMBS1252R	146.25	148.50	45.13	Remote (DX)	Circuit #1	110-120	1	60	4.52	450	2+G	Leads Multiple	20.00	3672	3400	2,150
				Remote (GLYCOL 35%)	Circuit #1	110-120	1	60	4.52	450	2+G	Leads Multiple	-	3672	3400	
				Self-Contained (R449A)	Circuit #1	110-120	1	60	16.00	1,504	2+G	5-20P or L5-20P	N/A	N/A	N/A	

*** Does not include electric defrost on freezer models.

Regulatory Approvals:

All Models	<p>Accordance with AHRI Std 1200</p> <p>ETL Listed to UL 471</p> <p>ETL Listed to CAN/CSA 22.2 No. 120</p> <p>ETL Sanitation to NSF/ANSI 7</p>
------------	--



In Accordance with
AHRI Std 1200

DOE 2017
Energy Efficiency
Compliant

Important Notes:

- 1) ELECTRICAL NOTE: If GFCI is required, a GFCI breaker MUST be used in lieu of a GFCI receptacle.
- 2) 45" minimum door entry clearance required (without shipping skid).
- 3) Units must be shimmed during installation to ensure the unit is level and plumb.

⚠ WARNING: This product can expose you to chemicals, including Urethane (Ethyl Carbamate), which are known to the State of California to cause cancer and birth defects or other reproductive harm. For more information go to www.P65Warnings.ca.gov.