

Technical Information

Fusion - GMG 52"H Refrigerated Service Case

Structural Concepts®

DELIVERING FRESH. ALWAYS.™

DIMENSIONS / SHIPPING

Model	L"	L1"	L2"	Est Wt (lbs)
GMG4	48.750	51.000	13.375	1,100
GMG5	60.625	62.875	13.375	1,150
GMG6	73.125	75.375	16.375	1,200
GMG8	97.500	99.750	42.500	1,450
GMG10	121.125	123.375	0.000	1,525
GMG12	146.250	148.500	0.000	1,600

ELECTRICAL

Model	System Circuit Volts			Ph	Frq	Rated Load Amps	Min Cir Amps	Max OCP Amps	Watts	Wires	NEMA Plug	Amps Lights	Amps Fans	Amps Anti-Sweats	Amps Misc/Refrig/Heat
GMG4	Remote (DX)	Circuit #1	110-120	1	60	1.23	15	15	124	2+G	Leads Multiple	0.53		0.70	N/A
GMG5	Remote (DX)	Circuit #1	110-120	1	60	1.46	15	15	160	2+G	Leads Multiple	0.76		0.70	N/A
GMG6	Remote (DX)	Circuit #1	110-120	1	60	1.46	15	15	160	2+G	Leads Multiple	0.76		0.70	N/A
GMG8	Remote (DX)	Circuit #1	110-120	1	60	1.69	15	15	188	2+G	Leads Multiple	0.99		0.70	N/A
GMG10	Remote (DX)	Circuit #1	110-120	1	60	2.80	15	15	91	2+G	Leads Multiple	1.40		1.40	N/A
GMG12	Remote Blower (DX)	Circuit #1	110-120	1	60	5.10	15	15	155	2+G	Leads Multiple	2.10	1.60	1.40	N/A

REFRIGERATION

Model	Zone	Section	System	Envt	REMOTE REFRIGERATION					GLYCOL / R744 REFRIGERATION			
					SST (°F)	Conv. Rack BTUH	Para. Rack BTUH	Defrost Interval (Hrs)	Defrost Duration	Total GPM	Pressure Drop (psi)	Concent (%)	Liquid Temp (°F)
GMG4	All	Main	Remote-DX	Type I	18	1,382	1,280	24.00	90.00	N/A	N/A	N/A	N/A
GMG5	All	Main	Remote-DX	Type I	18	1,728	1,600	24.00	90.00	N/A	N/A	N/A	N/A
GMG6	All	Main	Remote-DX	Type I	18	2,039	1,888	24.00	90.00	N/A	N/A	N/A	N/A
GMG8	All	Main	Remote-DX	Type I	18	2,722	2,520	24.00	90.00	N/A	N/A	N/A	N/A
GMG10	All	Main	Remote-DX	Type I	18	3,404	3,152	24.00	90.00	N/A	N/A	N/A	N/A
GMG12	All	Main	Remote Blower-DX	Type I	20	4,104	3,800	8.00	40.00	N/A	N/A	N/A	N/A

INTENDED ENVIRONMENT

Type I - Designed to operate in ambient conditions of 75°F with 55% relative humidity unless noted otherwise under Envt above.

WARMEST AVERAGE PRODUCT TEMP & INTENDED USE OF ZONES

Zone	Temp (°F)	Intended Use
1	38	Unpackaged refrigerated products

REGULATORY

All Models	Accordance with AHRI Std 1200 ETL Listed to UL 471 ETL Listed to CAN/CSA 22.2 No. 120 ETL Sanitation to NSF/ANSI 7
------------	---

IMPORTANT NOTES

- 1) ELECTRICAL NOTE: If GFCI is required, a GFCI breaker MUST be used in lieu of a GFCI receptacle.
- 2) 45" minimum door entry clearance required (without shipping skid).
- 3) Units must be shimmed during installation to ensure the unit is level and plumb"



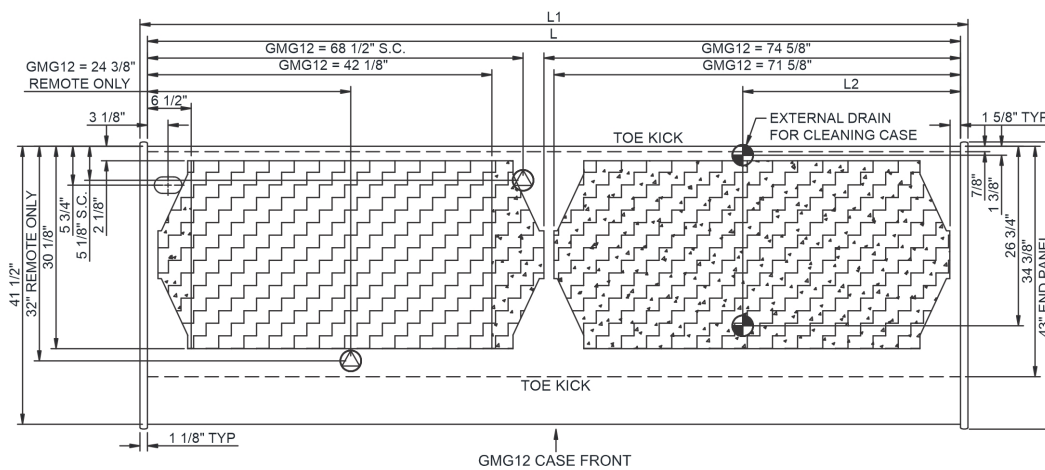
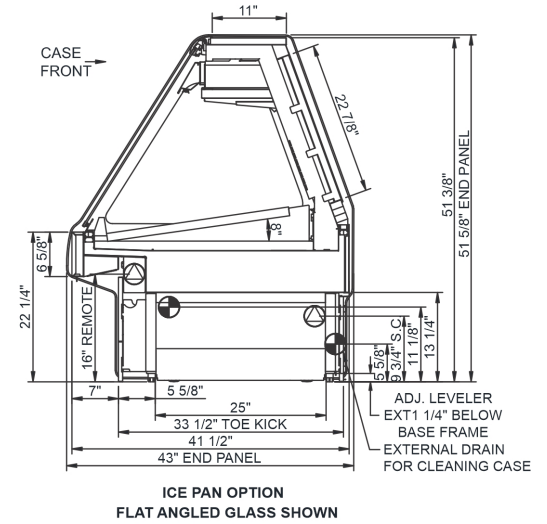
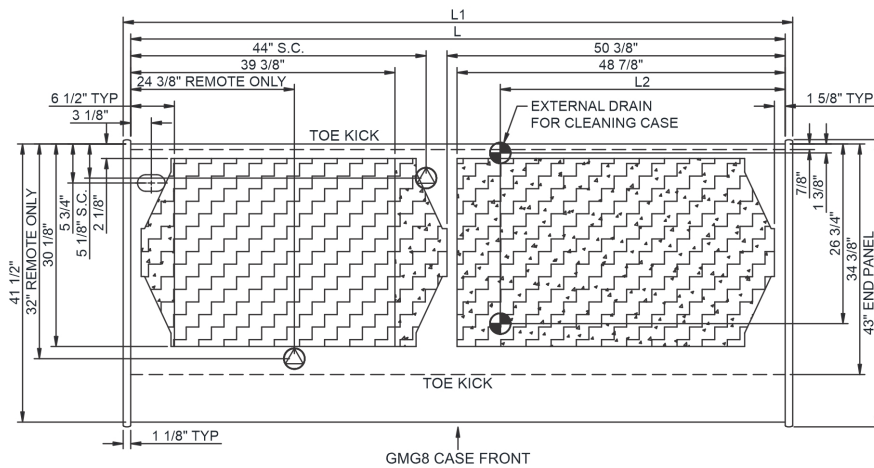
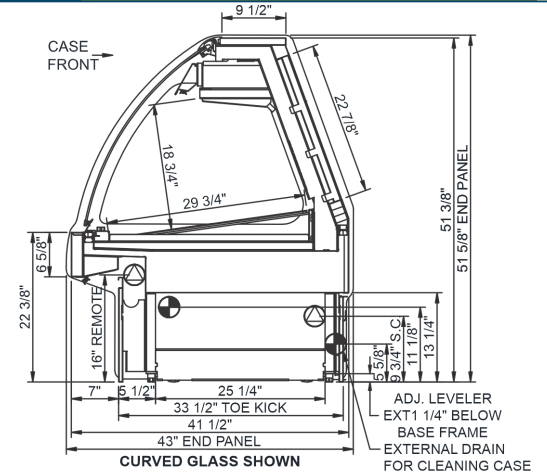
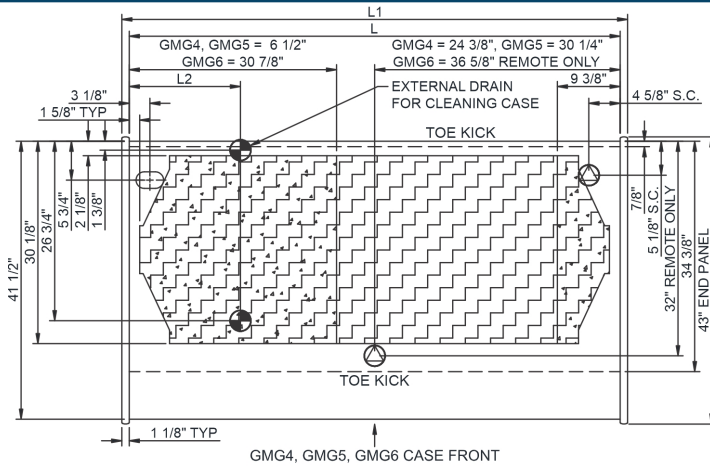
In Accordance with
AHRI Std 1200

Technical Information

Fusion - GMG 52"H Refrigerated Service Case

Structural Concepts®

DELIVERING FRESH. ALWAYS.™



NOTE: ALL DIMENSIONS APPROXIMATE

- ELECTRICAL JUNCTION BOX (SUPPLIED WITH 6" LEADS OR POWER CORD).
- LOCATION OF DRAIN TUBE FOR REMOTE REF. ONLY (SUPPLIED WITH 3/4" OR 1 1/2" PVC TUBE).

- REFRIGERATION LINE CONNECTION.
- REMOTE FLOOR SINK & UTILITIES ACCESS AREA.

- SELF-CONTAINED CASE SERVICE ACCESS AREA.
- DRY CASE SERVICE ACCESS AREA.