

Technical Information

Fusion - GMSSV 52"H Refrigerated Self-Service Case

Structural Concepts®

DELIVERING FRESH. ALWAYS.™

DIMENSIONS / SHIPPING

Model	L"	L1"	L2"	Est Wt (lbs)
GMSSV452R	48.750	51.000	3.500	N/A
GMSSV552R	60.625	62.875	3.500	N/A
GMSSV652R	73.125	75.375	3.500	N/A
GMSSV852R	97.500	99.750	3.500	N/A

ELECTRICAL

Model	System Circuit Volts			Ph	Frq	Rated Load Amps	Min Cir Amps	Max OCP Amps	Watts	Wires	NEMA Plug	Amps Lights	Amps Fans	Amps Anti-Sweats	Amps Misc/Refrig/Heat
GMSSV452R	Remote (DX)	Circuit #1	110-120	1	60	1.18	15	15	86	2+G	Leads Multiple	0.70	0.30	0.18	N/A
	Remote (R744 T)	Circuit #1	110-120	1	60	1.18	15	15	149	2+G	Leads Multiple	0.70	0.30	0.18	N/A
GMSSV552R	Remote (DX)	Circuit #1	110-120	1	60	1.54	15	15	81	2+G	Leads Multiple	0.70	0.60	0.24	N/A
GMSSV652R	Remote (DX)	Circuit #1	110-120	1	60	2.54	15	15	131	2+G	Leads Multiple	1.40	0.60	0.54	N/A
GMSSV852R	Remote (DX)	Circuit #1	110-120	1	60	3.03	15	15	274	2+G	Leads Multiple	1.98	0.60	0.37	0.08

REFRIGERATION

Model	Zone	Section	System	Envt	REMOTE REFRIGERATION					GLYCOL / R744 REFRIGERATION			
					SST (°F)	Conv. Rack BTUH	Para. Rack BTUH	Defrost Interval (Hrs)	Defrost Duration	Total GPM	Pressure Drop (psi)	Concent (%)	Liquid Temp (°F)
GMSSV452R	All	Main	Remote-DX	Type I	20	3,201	2,964	4.00	30.00	N/A	N/A	N/A	N/A
	All	Main	Remote-R744 TRANSCRITICAL	Type I	20	3,201	2,964	4.00	30.00	N/A	N/A	N/A	N/A
GMSSV552R	All	Main	Remote-DX	Type I	24	3,499	3,240	4.00	30.00	N/A	N/A	N/A	N/A
GMSSV652R	All	Main	Remote-DX	Type I	20	5,270	4,880	4.00	25.00	N/A	N/A	N/A	N/A
GMSSV852R	All	Main	Remote-DX	Type I	20	6,847	6,340	4.00	35.00	N/A	N/A	N/A	N/A

INTENDED ENVIRONMENT

Type I - Designed to operate in ambient conditions of 75°F with 55% relative humidity unless noted otherwise under Envt above.

WARMEST AVERAGE PRODUCT TEMP & INTENDED USE OF ZONES

Zone	Temp (°F)	Intended Use
1	40	Packaged refrigerated products

REGULATORY

All Models	Accordance with AHRI Std 1200 ETL Listed to UL 471 ETL Listed to CAN/CSA 22.2 No. 120 ETL Sanitation to NSF/ANSI 7
------------	---

IMPORTANT NOTES

- 1) ELECTRICAL NOTE: If GFCI is required, a GFCI breaker MUST be used in lieu of a GFCI receptacle
- 2) 45" minimum door entry clearance required (without shipping skid).
- 3) Units must be shimmed during installation to ensure the unit is level and plumb.

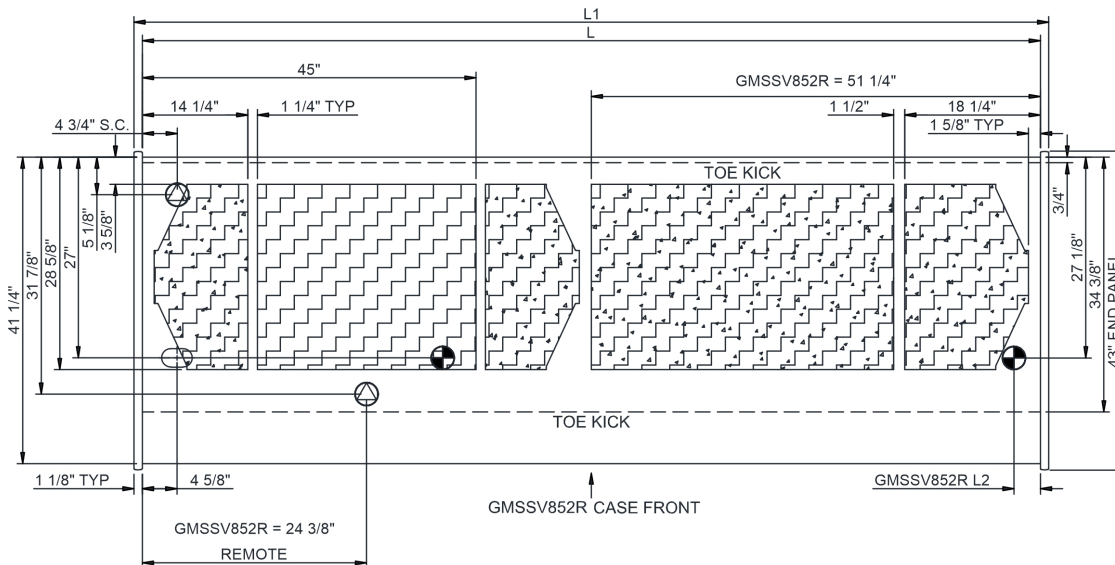
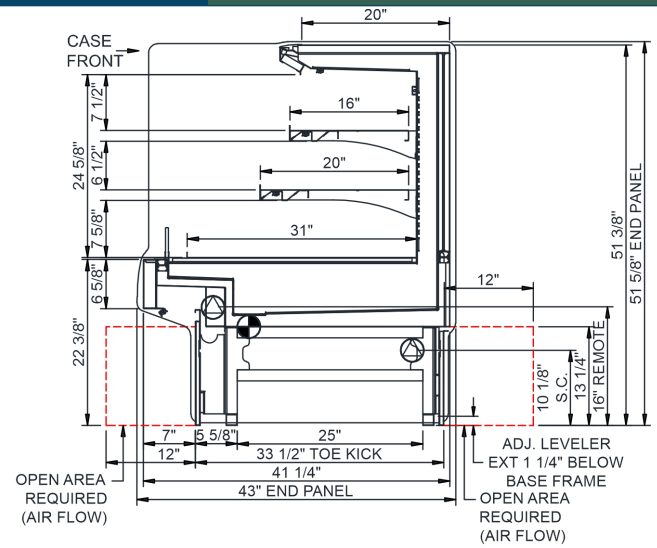
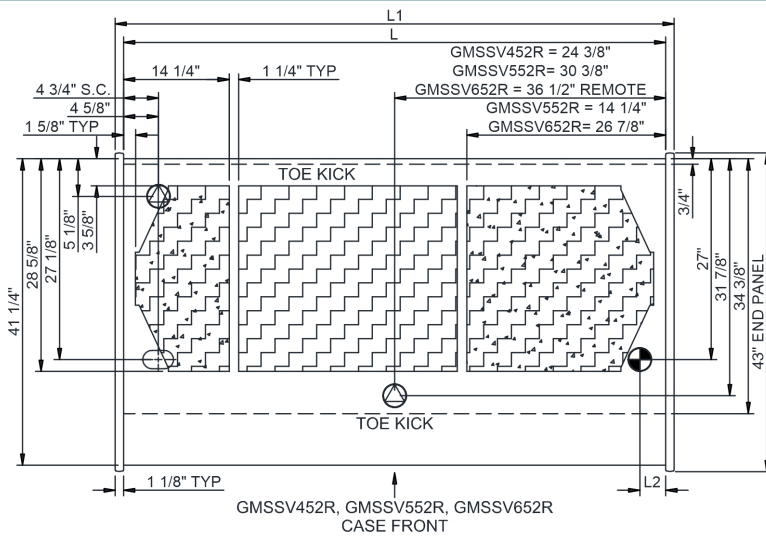


In Accordance with
AHRI Std 1200

Fusion - GMSSV 52"H Refrigerated Self-Service Case

Structural Concepts®

DELIVERING FRESH. ALWAYS.™



NOTE: ALL DIMENSIONS APPROXIMATE

