

- HMG3953R 38-3/4"L x 34-1/8"D x 53"H
- HMG5153R 50-3/4"L x 34-1/8"D x 53"H
- HMG6353R 62-5/8"L x 34-1/8"D x 53"H



HMG3953R

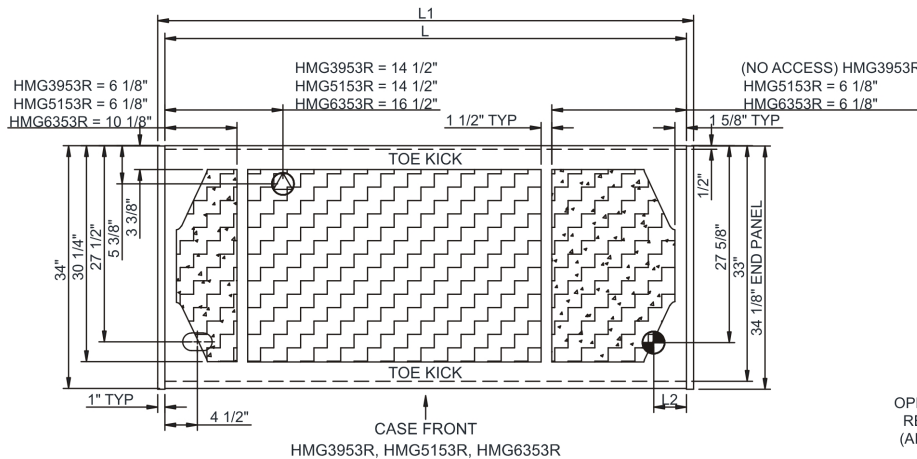
Included

- Breeze self-contained refrigeration
- Clear glass shelves, lighted (LED 3500K)
- Compressor air rear intake, front discharge. Toe kick cannot be blocked
- Condensate pan (self-contained refig. only)
- Curved double pane, lift-up front glass w/o lock
- Flat front panel
- LED 3500K top & shelf lights
- One year parts & labor; 5 year compressor warranty
- Shelving removable and adjustable on 1" centers
- Warmest average product temperature of 40°F or less

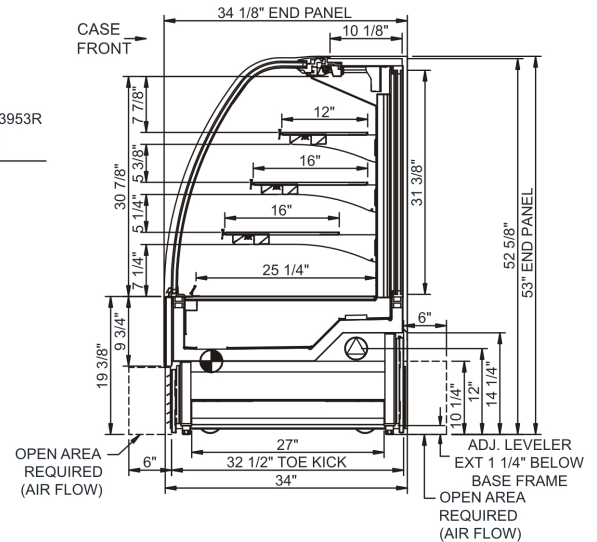
Specify	Standard Features	Additional Options
EXTERIOR COLOR	<ul style="list-style-type: none"><li>• Laminate (stock colors)</li></ul>	<ul style="list-style-type: none"><li>• Laminate (non-stock colors)</li><li>• Stainless steel</li></ul>
INTERIOR COLOR	<ul style="list-style-type: none"><li>• Powder coated Silversan Black</li></ul>	<ul style="list-style-type: none"><li>• Powder coated Designer White</li><li>• Stainless steel</li></ul>
REAR EXTERIOR COLOR	<ul style="list-style-type: none"><li>• Powder coated Designer White</li></ul>	<ul style="list-style-type: none"><li>• Powder coated Silversan Black</li><li>• Stainless steel (must choose stainless exterior)</li></ul>
BASE SUPPORT	<ul style="list-style-type: none"><li>• Levelers</li></ul>	<ul style="list-style-type: none"><li>• 6"H legs (self-cont.)</li><li>• Casters (self-cont.)</li></ul>
END PANELS	<ul style="list-style-type: none"><li>• Full w/stainless steel mirror interior</li></ul>	<ul style="list-style-type: none"><li>• Cutaway w/glass</li></ul>
PRICE TAG MOLDING	<ul style="list-style-type: none"><li>• None</li></ul>	<ul style="list-style-type: none"><li>• 1" Price tag molding (matches interior color)</li></ul>
REAR DOORS	<ul style="list-style-type: none"><li>• Clear glass rear sliding doors w/o lock</li></ul>	<ul style="list-style-type: none"><li>• Reflective glass rear sliding doors w/o lock</li></ul>
ELECTRICAL CONNECTION	<ul style="list-style-type: none"><li>• 6' Straight blade power cord (self-cont.)</li></ul>	<ul style="list-style-type: none"><li>• 6' Locking power cord (self-cont.)</li><li>• Electrical leads (remote)</li></ul>
REFRIGERATION	<ul style="list-style-type: none"><li>• Breeze self-contained refrigeration</li></ul>	<ul style="list-style-type: none"><li>• Note: Remote doesn't incl Conds unit. Floor drain reqd.</li><li>• Remote w/thermostat, solenoid &amp; TXV</li></ul>
MISCELLANEOUS		<ul style="list-style-type: none"><li>• Front glass lock</li><li>• Rear door lock</li><li>• Second year parts &amp; labor warranty (excludes compressor)</li></ul>
ACCESSORIES		<ul style="list-style-type: none"><li>• Clean Sweep® coil cleaner (self-cont.)</li></ul>

<b>Intended Environment:</b> Type I - Designed to operate in ambient conditions of 75°F with 55% relative humidity unless noted otherwise in system information below.		
<b>Zone</b>	<b>Intended Product To Be Displayed</b>	<b>Warmest Avg Prod Temp ° F</b>
1	Unpackaged refrigerated products	40

### PLAN VIEW



SIDE VIEW



NOTE: ALL DIMENSIONS APPROXIMATE

- |   |   |   |   |
|---|---|---|---|
|  | ELECTRICAL JUNCTION BOX<br>(SUPPLIED WITH 6" LEADS OR POWER CORD).                      |  | REMOTE FLOOR SINK & UTILITIES<br>ACCESS AREA. |
|  | LOCATION OF DRAIN TUBE FOR REMOTE REF.<br>ONLY (SUPPLIED WITH 3/4" OR 1 1/2" PVC TUBE). |  | SELF-CONTAINED CASE SERVICE ACCESS AREA.      |
|  | REFRIGERATION LINE CONNECTION.  |  | DRY CASE SERVICE ACCESS AREA.                 |

Model Technical Specifications																
Model	L"	L1"	L2"	System Circuit Volts			Phs	Freq	Amps ***	Watts	Wires	NEMA Plug	SST	Conv. Rack RTU/H	Para. Rack RTU/H	Est Wt
HMG3953R	36.75	38.75	4.75	Remote (DX)	Circuit #1	110-120	1	60	1.35	141	2+G	Leads Multiple	20.00	1793	1660	850
				Self-Contained (R290)	Circuit #1	110-120	1	60	15.32	1,624	2+G	5-20P or L5-20P	N/A	N/A	N/A	
HMG5153R	48.75	50.75	4.75	Remote (DX)	Circuit #1	110-120	1	60	2.31	236	2+G	Leads Multiple	20.00	1944	1800	950
				Self-Contained (R290)	Circuit #1	110-120	1	60	15.84	1,654	2+G	5-20P or L5-20P	N/A	N/A	N/A	
HMG6353R	60.63	62.63	4.75	Remote (DX)	Circuit #1	110-120	1	60	2.69	248	2+G	Leads Multiple	20.00	2290	2120	1,150
				Self-Contained (R290)	Circuit #1	110-120	1	60	15.92	1,664	2+G	5-20P or L5-20P	N/A	N/A	N/A	

\*\*\* Does not include electric defrost on freezer models.

## Regulatory Approvals:

All Models	<p>Accordance with AHRI Std 1200</p> <p>ETL Listed to UL 471</p> <p>ETL Listed to CAN/CSA 22.2 No. 120</p> <p>ETL Sanitation to NSF/ANSI 7</p>
------------	--



### Important Notes:

- 1) ELECTRICAL NOTE: If GFCI is required, a GFCI breaker MUST be used in lieu of a GFCI receptacle
- 2) 35" minimum door entry clearance required (without shipping skid).
- 3) Units are supplied with levelers. They must be adjusted during installation to ensure the unit is level and plumb. Dimensions reflect levelers extended 1 1/4".

**⚠ WARNING:** This product can expose you to chemicals, including Urethane (Ethyl Carbamate), which are known to the State of California to cause cancer and birth defects or other reproductive harm. For more information go to [www.P65Warnings.ca.gov](http://www.P65Warnings.ca.gov).