

- **HMO2653R** 26-3/4"L x 34-1/8"D x 53"H
- **HMO3953R** 38-3/4"L x 34-1/8"D x 53"H
- **HMO5153R** 50-3/4"L x 34-1/8"D x 53"H
- **HMO6353R** 62-5/8"L x 34-1/8"D x 53"H

### Included

- Breeze self-contained refrigeration
- Clear glass shelves, lighted (LED 3500K)
- Compressor air rear intake, front discharge. Toe kick cannot be blocked
- Condensate pan (self-contained refig. only)
- Flat front panel
- LED 3500K top & shelf lights
- One year parts & labor; 5 year compressor warranty
- Open reach-in front
- Shelving removable and adjustable on 1" centers
- Upper & lower rear areas white
- Warmest average product temperature of 40°F or less



**HMO2653R**

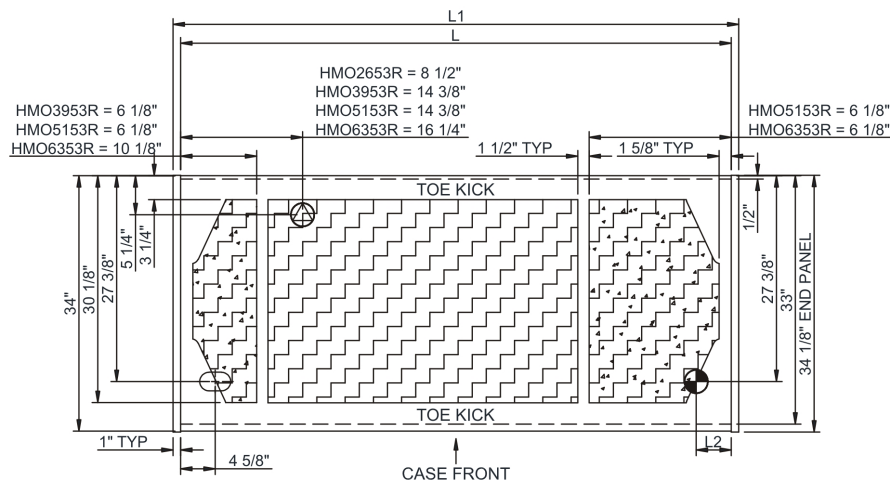
Specify	Standard Features	Additional Options
<b>EXTERIOR COLOR</b>	• Laminate (stock colors)	• Laminate (non-stock colors) • Stainless steel
<b>INTERIOR COLOR</b>	• Powder coated Silversan Black	• Powder coated Designer White • Stainless steel
<b>REAR EXTERIOR COLOR</b>	• Powder coated Designer White	• Powder coated Silversan Black • Stainless steel (must choose stainless exterior)
<b>BASE SUPPORT</b>	• Levelers	• 6"H legs (self-cont.) • Casters (self-cont.)
<b>END PANELS</b>	• Full w/stainless steel mirror interior	• Cutaway w/glass
<b>PRICE TAG MOLDING</b>	• None	• 1" Price tag molding (matches interior color)
<b>REAR DOORS</b>	• None (solid back panel)	<sup>1</sup> • Clear glass rear sliding doors w/o lock <sup>2</sup> • Solid rear swinging door w/o lock (HMO2653)
<b>ELECTRICAL CONNECTION</b>	• 6' Straight blade power cord (self-cont.)	• 6' Locking power cord (self-cont.) • Electrical leads (remote)
<b>REFRIGERATION</b>	• Breeze self-contained refrigeration	• Note: Remote doesn't incl Conds unit. Floor drain reqd. • Remote w/thermostat, solenoid & TXV
<b>MISCELLANEOUS</b>		• Rear door lock • Second year parts & labor warranty (excludes compressor)
<b>ACCESSORIES</b>		• Clean Sweep® coil cleaner (self-cont.) • Night curtain, retractable, non-locking • Removable wire security cover, locking

**Option Notes:** 1 - HMO3953R; HMO5153R; HMO6353R;  
2 - HMO2653R;

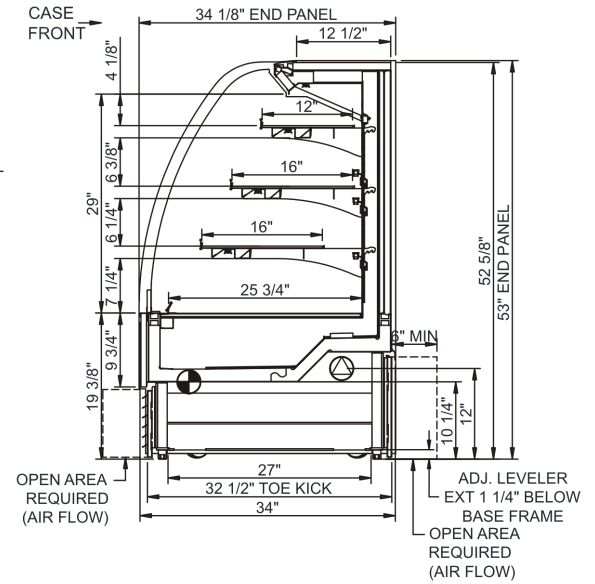
**Intended Environment:** Type I - Designed to operate in ambient conditions of 75°F with 55% relative humidity unless noted otherwise in system information below.

Zone	Intended Product To Be Displayed	Warmest Avg Prod Temp ° F
1	Packaged refrigerated products	40

PLAN VIEW



SIDE VIEW



NOTE: ALL DIMENSIONS APPROXIMATE

ELECTRICAL JUNCTION BOX (SUPPLIED WITH 6" LEADS OR POWER CORD).  
 LOCATION OF DRAIN TUBE FOR REMOTE REF. ONLY (SUPPLIED WITH 3/4" OR 1 1/2" PVC TUBE).

REFRIGERATION LINE CONNECTION.  
 REMOTE FLOOR SINK & UTILITIES ACCESS AREA.

SELF-CONTAINED CASE SERVICE ACCESS AREA.  
 DRY CASE SERVICE ACCESS AREA.

Model Technical Specifications																
Model	L"	L1"	L2"	System Circuit Volts			Phs	Freq	Amps ***	Watts	Wires	NEMA Plug	SST	Conv. Rack BTU/H	Para. Rack BTU/H	Est Wt
HMO2653R	24.75	26.75	4.88	Remote (DX)	Circuit #1	110-120	1	60	1.11	116	2+G	Leads Multiple	24.00	2566	2376	650
				Self-Contained (R290)	Circuit #1	110-120	1	60	15.12	1,601	2+G	5-20P or L5-20P	N/A	N/A	N/A	
HMO3953R	36.75	38.75	4.88	Remote (DX)	Circuit #1	110-120	1	60	1.20	131	2+G	Leads Multiple	24.00	3758	3480	800
				Self-Contained (R290)	Circuit #1	110-120	1	60	15.17	1,607	2+G	5-20P or L5-20P	N/A	N/A	N/A	
HMO5153R	48.75	50.75	4.88	Remote (DX)	Circuit #1	110-120	1	60	2.03	210	2+G	Leads Multiple	24.00	4730	4380	900
				Self-Contained (R290)	Circuit #1	110-120	1	60	15.66	1,633	2+G	5-20P or L5-20P	N/A	N/A	N/A	
HMO6353R	60.63	62.63	4.88	Remote (DX)	Circuit #1	110-120	1	60	1.90	110	2+G	Leads Multiple	20.00	5702	5280	1,100
				Self-Contained (R290)	Circuit #1	208-240	1	60	16.00	2,884	2+G	6-20P or L6-20P	N/A	N/A	N/A	

\*\*\* Does not include electric defrost on freezer models.

#### Regulatory Approvals:

All Models  
 Accordance with AHRI Std 1200  
 ETL Listed to UL 471  
 ETL Listed to CAN/CSA 22.2 No. 120  
 ETL Sanitation to NSF/ANSI 7



In Accordance with  
**AHRI Std 1200**

**DOE 2017**  
 Energy Efficiency  
 Compliant

#### Important Notes:

- 1) ELECTRICAL NOTE: If GFCI is required, a GFCI breaker MUST be used in lieu of a GFCI receptacle
- 2) Units are supplied with levelers. They must be adjusted during installation to ensure the unit is level and plum.
- 3) 35" Minimum door entry clearance required (without shipping skid).

**⚠ WARNING:** This product can expose you to chemicals, including Urethane (Ethyl Carbamate), which are known to the State of California to cause cancer and birth defects or other reproductive harm. For more information go to [www.P65Warnings.ca.gov](http://www.P65Warnings.ca.gov).