

Technical Information

Harmony - Refrigerated Self-Service Low Profile Case

Structural Concepts®

DELIVERING FRESH. ALWAYS.™

DIMENSIONS / SHIPPING

Model	L"	L1"	L2"	Est Wt (lbs)
HMO3936R	36.750	38.750	4.625	N/A
HMO5136R	48.750	50.750	4.625	N/A
HMO7536R	73.125	75.125	4.625	N/A

ELECTRICAL

Model	System Circuit Volts			Ph	Frq	Rated Load Amps	Min Cir Amps	Max OCP Amps	Watts	Wires	NEMA Plug	Amps Lights	Amps Fans	Amps Anti-Sweats	Amps Misc/Refrig/Heat
HMO3936R	Remote (DX)	Circuit #1	110-120	1	60	1.15	15	15	95	2+G	Leads Multiple	0.41	0.60	0.14	N/A
	Self-Contained (R290)	Circuit #1	110-120	1	60	15.17	20	20	1,607	2+G	5-20P or L5-20P	1.12	0.45	4.10	9.50
HMO5136R	Remote (DX)	Circuit #1	110-120	1	60	1.57	15	15	146	2+G	Leads Multiple	0.53	0.60	0.36	0.08
	Self-Contained (R290)	Circuit #1	110-120	1	60	15.66	20	20	1,633	2+G	5-20P or L5-20P	1.12	0.90	4.14	9.50
HMO7536R	Remote (DX)	Circuit #1	110-120	1	60	2.23	15	15	210	2+G	Leads Multiple	0.76	0.90	0.57	N/A
	Self-Contained (R290)	Circuit #1	208-240	1	60	16.00	20	20	2,890	2+G	6-20P or L6-20P	0.61	0.44	3.55	13.00

REFRIGERATION

Model	Zone	Section	System	Env't	REMOTE REFRIGERATION					GLYCOL / R744 REFRIGERATION			
					SST (°F)	Conv. Rack BTUH	Para. Rack BTUH	Defrost Interval (Hrs)	Defrost Duration	Total GPM	Pressure Drop (psi)	Concent (%)	Liquid Temp (°F)
HMO3936R	All	Main	Remote-DX	Type I	24	2,544	2,356	4.00	30.00	N/A	N/A	N/A	N/A
	All	Main	Self-Contained-R290	Type I	N/A	N/A	N/A	N/A	N/A	N/A	N/A	N/A	N/A
HMO5136R	All	Refrigerator	Remote-DX	Type I	20	2,592	2,400	4.00	30.00	N/A	N/A	N/A	N/A
	All	Refrigerator	Self-Contained-R290	Type I	N/A	N/A	N/A	N/A	N/A	N/A	N/A	N/A	N/A
HMO7536R	All	Main	Remote-DX	Type I	20	3,974	3,680	4.00	30.00	N/A	N/A	N/A	N/A
	All	Main	Self-Contained-R290	Type I	N/A	N/A	N/A	N/A	N/A	N/A	N/A	N/A	N/A

INTENDED ENVIRONMENT

Type I - Designed to operate in ambient conditions of 75°F with 55% relative humidity unless noted otherwise under Env't above.

WARMEST AVERAGE PRODUCT TEMP & INTENDED USE OF ZONES

Zone	Temp (°F)	Intended Use
1	40	Packaged refrigerated products

IMPORTANT NOTES

- 1) ELECTRICAL NOTE: If GFCI is required, a GFCI breaker MUST be used in lieu of a GFCI receptacle
- 2) 35" Minimum door entry clearance required (without shipping skid).
- 3) Units are supplied with levelers which must be adjusted during installation to ensure the unit is level and plumb.
- 4) Compressor air rear intake, front discharge. Toe kick cannot be blocked.

REGULATORY

All Models	Accordance with AHRI Std 1200 ETL Listed to UL 471 ETL Listed to CAN/CSA 22.2 No. 120 ETL Sanitation to NSF/ANSI 7
------------	---



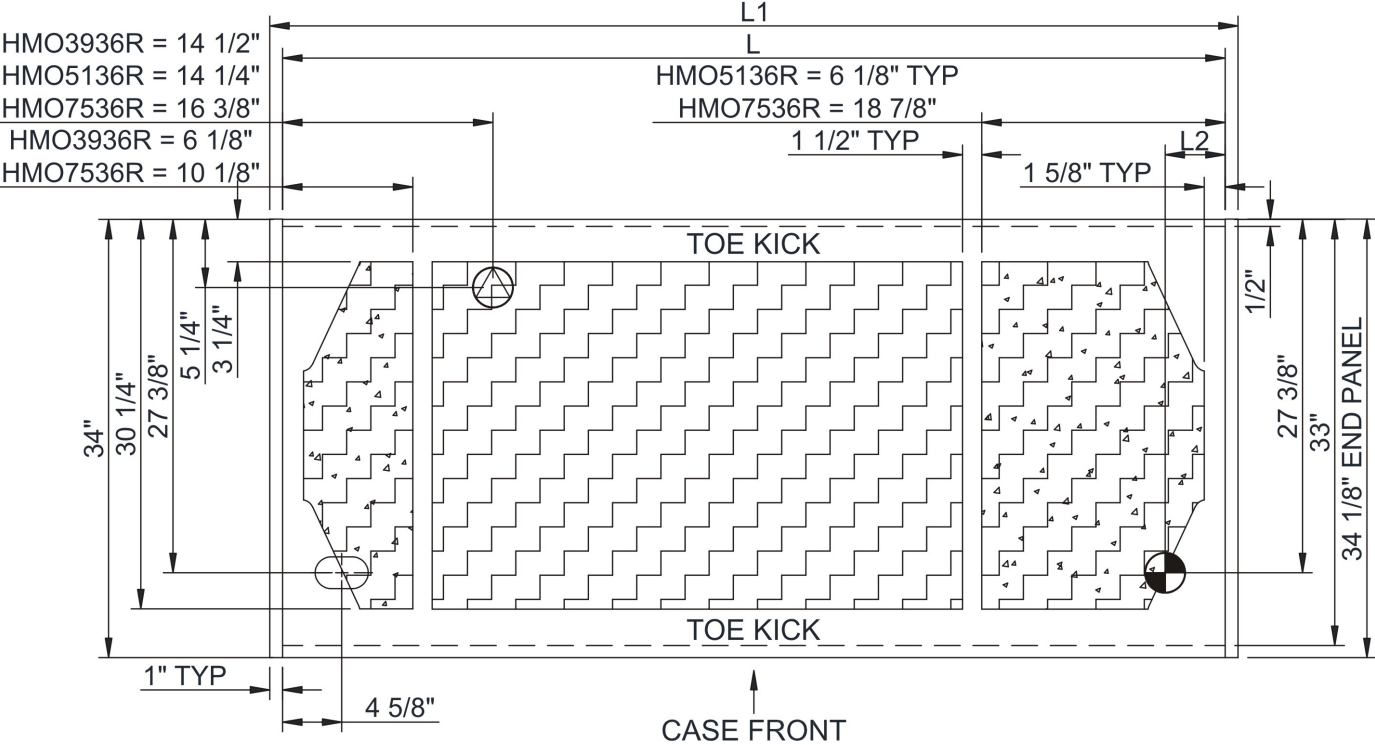
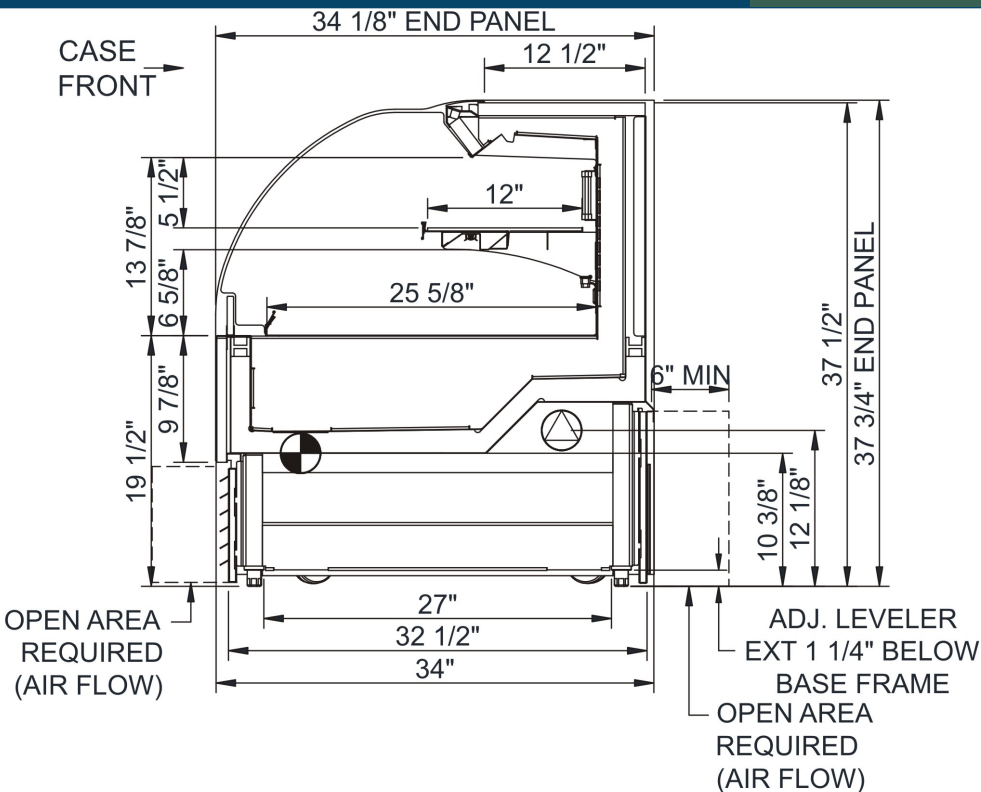
In Accordance with
AHRI Std 1200

Technical Information

Harmony - Refrigerated Self-Service Low Profile Case

Structural Concepts®

DELIVERING FRESH. ALWAYS.™



NOTE: ALL DIMENSIONS APPROXIMATE

- ELECTRICAL JUNCTION BOX (SUPPLIED WITH 6" LEADS OR POWER CORD).
- REFRIGERATION LINE CONNECTION.
- SELF-CONTAINED CASE SERVICE ACCESS AREA.
- LOCATION OF DRAIN TUBE FOR REMOTE REF. ONLY (SUPPLIED WITH 3/4" OR 1 1/2" PVC TUBE).
- REMOTE FLOOR SINK & UTILITIES ACCESS AREA.
- DRY CASE SERVICE ACCESS AREA.