

# Technical Information

Oasis - Non-Refrigerated Self-Service Case 32"D

Structural Concepts®

DELIVERING FRESH. ALWAYS.™

## DIMENSIONS / SHIPPING

| Model  | L"  | L1"    | L2"   | Est Wt (lbs) |
|--------|-----|--------|-------|--------------|
| B3632D | N/A | 36.625 | 0.000 | N/A          |
| B4732D | N/A | 47.625 | 0.000 | N/A          |
| B5932D | N/A | 59.625 | 0.000 | N/A          |
| B7132D | N/A | 71.625 | 0.000 | N/A          |

## ELECTRICAL

| Model  | System Circuit Volts |            |         | Ph | Frq | Rated Load Amps | Min Cir Amps | Max OCP Amps | Watts | Wires | NEMA Plug       | Amps Lights | Amps Fans | Amps Anti-Sweats | Amps Misc/Refrig/Heat |
|--------|----------------------|------------|---------|----|-----|-----------------|--------------|--------------|-------|-------|-----------------|-------------|-----------|------------------|-----------------------|
| B3632D | Ambient/Lights (N/A) | Circuit #1 | 110-120 | 1  | 60  | 0.81            | 15           | 15           | 85    | 2+G   | 5-15P or L5-15P | 0.81        | N/A       | N/A              | N/A                   |
| B4732D | Ambient/Lights (N/A) | Circuit #1 | 110-120 | 1  | 60  | 1.18            | 15           | 15           | 125   | 2+G   | 5-15P or L5-15P | 1.18        | N/A       | N/A              | N/A                   |
| B5932D | Ambient/Lights (N/A) | Circuit #1 | 110-120 | 1  | 60  | 1.52            | 15           | 15           | 160   | 2+G   | 5-15P or L5-15P | 1.52        | N/A       | N/A              | N/A                   |
| B7132D | Ambient/Lights (N/A) | Circuit #1 | 110-120 | 1  | 60  | 1.68            | 15           | 15           | 200   | 2+G   | 5-15P or L5-15P | 1.68        | N/A       | N/A              | N/A                   |

## REFRIGERATION

| Model  | Zone | Section | System             | Envt   | REMOTE REFRIGERATION |                 |                 |                        |                  | GLYCOL / R744 REFRIGERATION |                     |             |                  |
|--------|------|---------|--------------------|--------|----------------------|-----------------|-----------------|------------------------|------------------|-----------------------------|---------------------|-------------|------------------|
|        |      |         |                    |        | SST (°F)             | Conv. Rack BTUH | Para. Rack BTUH | Defrost Interval (Hrs) | Defrost Duration | Total GPM                   | Pressure Drop (psi) | Concent (%) | Liquid Temp (°F) |
| B3632D | All  | Ambient | Ambient/Lights-N/A | Type I | N/A                  | N/A             | N/A             | N/A                    | N/A              | N/A                         | N/A                 | N/A         | N/A              |
| B4732D | All  | Ambient | Ambient/Lights-N/A | Type I | N/A                  | N/A             | N/A             | N/A                    | N/A              | N/A                         | N/A                 | N/A         | N/A              |
| B5932D | All  | Ambient | Ambient/Lights-N/A | Type I | N/A                  | N/A             | N/A             | N/A                    | N/A              | N/A                         | N/A                 | N/A         | N/A              |
| B7132D | All  | Ambient | Ambient/Lights-N/A | Type I | N/A                  | N/A             | N/A             | N/A                    | N/A              | N/A                         | N/A                 | N/A         | N/A              |

## INTENDED ENVIRONMENT

Type I - Designed to operate in ambient conditions of 75°F with 55% relative humidity unless noted otherwise under Envt above.

## WARMEST AVERAGE PRODUCT TEMP & INTENDED USE OF ZONES

| Zone | Temp (°F) | Intended Use                       |
|------|-----------|------------------------------------|
| 1    | Ambient   | Packaged non-refrigerated products |

## IMPORTANT NOTES

- 1) ELECTRICAL NOTE: If GFCI is required, a GFCI breaker MUST be used in lieu of a GFCI receptacle
- 2) Units are supplied with levelers which must be adjusted during installation to ensure the unit is level and plumb.

## REGULATORY

|            |   |
|------------|---|
| All Models | ETL Listed to UL 65<br>ETL Sanitation to NSF/ANSI 2 |
|------------|---|

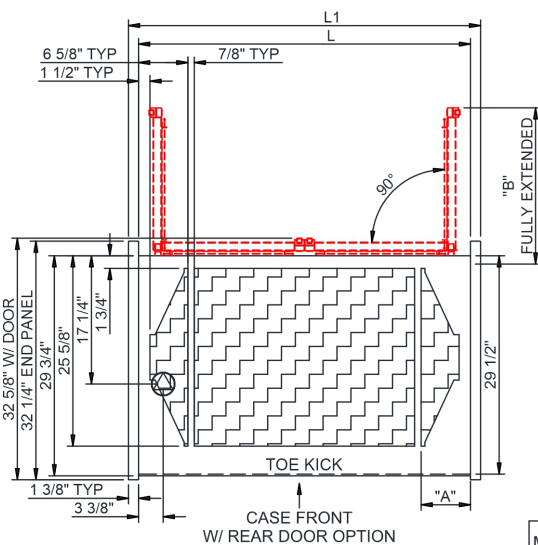
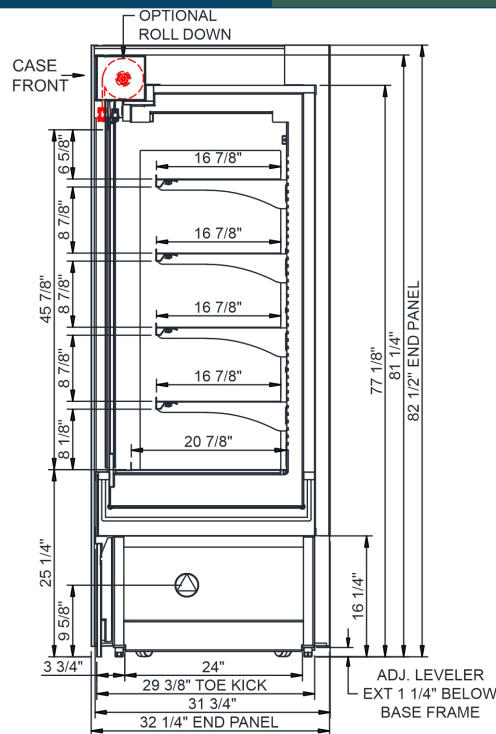
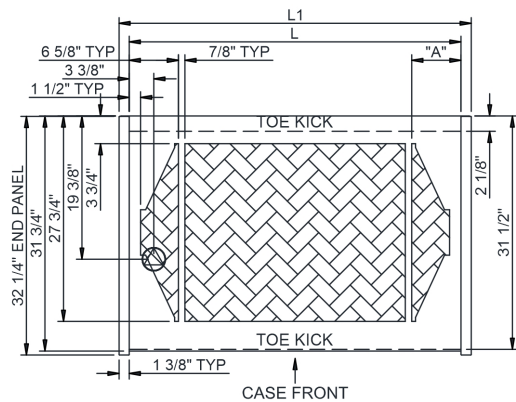


# Technical Information

Oasis - Non-Refrigerated Self-Service Case 32"D

Structural Concepts®

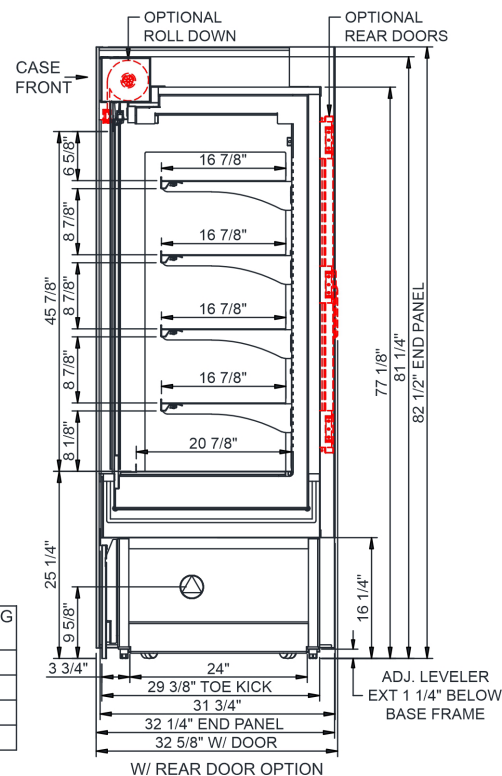
DELIVERING FRESH. ALWAYS.™



|        | "A"     | "B"     |
|--------|---------|---------|
| B3632D | 6 5/8"  | 32 1/8" |
| B4732D | 6 5/8"  | 20"     |
| B5932D | 6 5/8"  | 21 3/4" |
| B7132D | 14 1/8" | 20"     |

| MODEL   | REAR DOOR OPENING<br>WIDTH X HEIGHT |
|---------|-------------------------------------|
| B3632D  | 22 7/8" X 42 1/4"                   |
| *B4732D | 11 7/8" X 42 1/4" TYP               |
| *B5932D | 11 7/8" X 42 1/4" TYP               |
| *B7132D | 22 7/8" X 42 1/4" TYP               |

\* (2) REAR DOORS



NOTE: ALL DIMENSIONS APPROXIMATE

ELECTRICAL JUNCTION BOX  
(SUPPLIED WITH 6" LEADS OR POWER CORD).  
 LOCATION OF DRAIN TUBE FOR REMOTE REF.  
ONLY (SUPPLIED WITH 3/4" OR 1 1/2" PVC TUBE).

REFRIGERATION LINE CONNECTION.  
 REMOTE FLOOR SINK & UTILITIES  
ACCESS AREA.

SELF-CONTAINED CASE SERVICE ACCESS AREA.  
 DRY CASE SERVICE ACCESS AREA.