

Fusion

Ambient Inline Packaging Counter

Structural Concepts®
DELIVERING FRESH. ALWAYS.™

- (Lengths do not include 1-1/8" end panels)
- MD1272SO 12"L x 29-1/4"D x 72-1/2"H
 - MD1872SO 18"L x 29-1/4"D x 72-1/2"H
 - MD2272SO 22"L x 29-1/4"D x 72-1/2"H

- Included**
- LED top & shelf lights
 - One year parts & labor warranty
 - Shelving removable and adjustable on 1" centers
 - Stainless steel rear exterior
 - Tissue box holder
 - Trash chute with pull out front door



MD2272SO

Specify	Standard Features	Additional Options
EXTERIOR COLOR	• Powder coated Silversan Black	• Powder coated (stock/non-stock colors)
INTERIOR COLOR	• Powder coated Silversan Black	• Stainless steel
LOWER FRONT PANEL COLOR	• Powder coated Silversan Black	• Powder coated (stock/non-stock colors) • Stainless steel
BASE	• Base w/storage for packaging supplies	
BASE SUPPORT	• Rail system for shims	
BUMPER FRONT	• 1" Boston bumper (specify color)	• 1" Stainless steel plate rail bumper
END PANELS	• Full w/stainless steel mirror interior	• None (specify per line-up)
SHELVING	• (4) Lighted solid shelves	
LIGHTS	• LED 3500K w/ frosted lens	
ELECTRICAL CONNECTION	• Leads	
MISCELLANEOUS		• Second year parts & labor warranty

Fusion

Ambient Inline Packaging Counter

Structural Concepts®

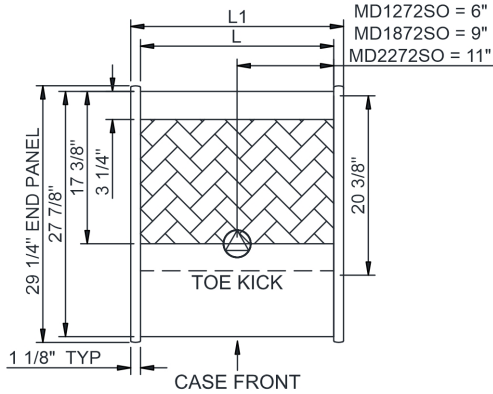
DELIVERING FRESH. ALWAYS.™

Intended Environment: Type I - Designed to operate in ambient conditions of 75°F with 55% relative humidity unless noted otherwise in system information below.

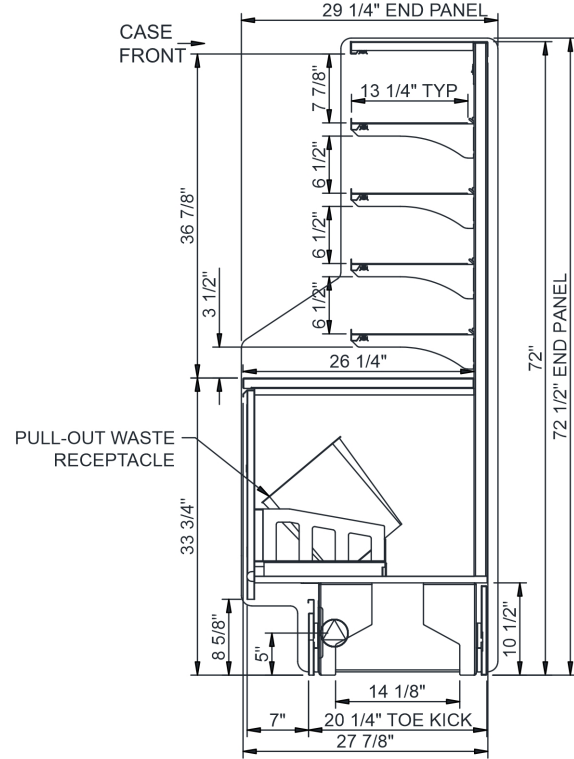
Zone 1 **Intended Product To Be Displayed**

Warmest Avg Prod Temp ° F

PLAN VIEW



SIDE VIEW



NOTE: ALL DIMENSIONS APPROXIMATE

ELECTRICAL JUNCTION BOX
(SUPPLIED WITH 6\"/>

LOCATION OF DRAIN TUBE FOR REMOTE REF.
ONLY (SUPPLIED WITH 3/4\"/>

REFRIGERATION LINE CONNECTION.
 REMOTE FLOOR SINK & UTILITIES
ACCESS AREA.

SELF-CONTAINED CASE SERVICE ACCESS AREA.
 DRY CASE SERVICE ACCESS AREA.

Model Technical Specifications

Model	L"	L1"	L2"	System Circuit Volts			Phs	Freq	Amps ***	Watts	Wires	NEMA Plug	SST	Conv. Rack BTU/H	Para. Rack BTU/H	Est Wt
MD1272SO	12.00	14.25	.00	Ambient/Lights (N/A)	Circuit #1	110-120	1	60	0.70	6	2+G	Leads Single	N/A	N/A	N/A	300
MD1872SO	18.00	20.25	.00	Ambient/Lights (N/A)	Circuit #1	110-120	1	60	0.70	10	2+G	Leads Single	N/A	N/A	N/A	400
MD2272SO	22.00	24.25	.00	Ambient/Lights (N/A)	Circuit #1	110-120	1	60	0.70	13	2+G	Leads Single	N/A	N/A	N/A	500

*** Does not include electric defrost on freezer models.

Regulatory Approvals:

All Models ETL Listed to UL 65
ETL Sanitation to NSF/ANSI 2



DOE 2017
Energy Efficiency
Compliant

Important Notes:

1) ELECTRICAL NOTE: If GFCI is required, a GFCI breaker MUST be used in lieu of a GFCI receptacle.

⚠ WARNING: This product can expose you to chemicals, including Urethane (Ethyl Carbamate), which are known to the State of California to cause cancer and birth defects or other reproductive harm. For more information go to www.P65Warnings.ca.gov.