

Oasis

Heated Self-Service Case - 32"D

Structural Concepts®

DELIVERING FRESH. ALWAYS.™

- **B2432H** 24-3/4"L x 32-1/4"D x 82-1/2"H
- **B3632H** 36-3/4"L x 32-1/4"D x 82-1/2"H

Included

- (4) Stainless steel shelves
- Flat upper front panel & header
- LED top & shelf lights
- One year parts & labor warranty
- Shelving removable and adjustable on 1" centers
- Stainless steel interior
- Warmest average product temperature of 160°F



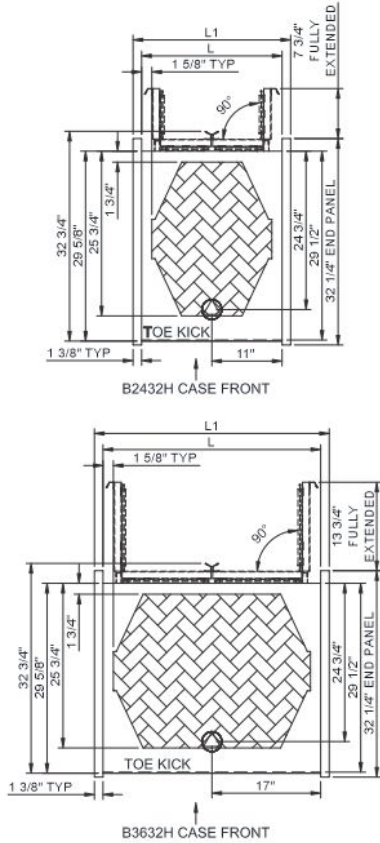
B3632H

Specify	Standard Features	Additional Options
EXTERIOR COLOR	• Powder coated Silversan Black	• Laminate (stock/non-stock colors) • Powder coated (stock/non-stock colors) • Stainless steel
LOWER FRONT PANEL COLOR	• Powder coated Silversan Black	• Stainless steel (must choose stainless exterior)
REAR EXTERIOR COLOR	• Black	• Stainless steel (must choose stainless rear doors)
BASE SUPPORT	• Casters w/ levelers	
END PANELS	• Full w/stainless steel mirror interior	• Cutaway w/glass
VINYL GRAPHICS	• None	• Full wrap graphic set • Logo graphic only
PRICE TAG MOLDING	• Price tag molding (matches interior color)	
REAR DOORS	• None (solid back panel)	• Rear loading clear glass swing doors (black) • Rear loading clear glass swing doors (stainless)
SHELVING	• (4) Individually controlled solid heated shelves	
ELECTRICAL CONNECTION	• 6' Straight blade power cord	• 6' Locking blade power cord • Electrical leads
MISCELLANEOUS		• Second year parts & labor warranty (excludes compressor)

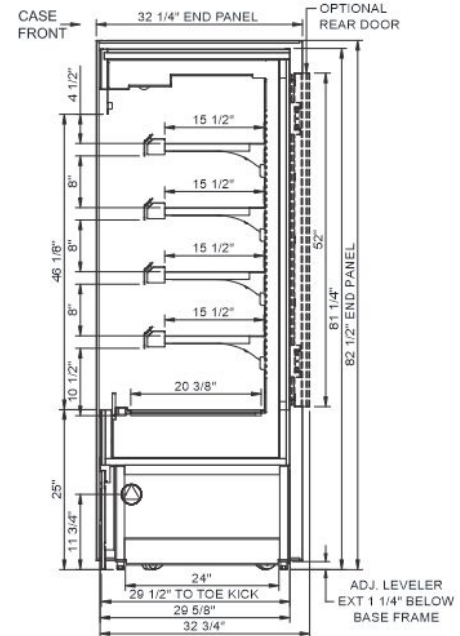
Intended Environment: Type I - Designed to operate in ambient conditions of 75°F with 55% relative humidity unless noted otherwise in system information below.

Zone	Intended Product To Be Displayed	Warmest Avg Prod Temp ° F
1	Packaged heated product	160

PLAN VIEW



SIDE VIEW



NOTE: ALL DIMENSIONS APPROXIMATE

- ELECTRICAL JUNCTION BOX (SUPPLIED WITH 6" LEADS OR POWER CORD).
- REMOTE FLOOR SINK & UTILITIES ACCESS AREA.
- LOCATION OF DRAIN TUBE FOR REMOTE REF. ONLY (SUPPLIED WITH 3/4" OR 1 1/2" PVC TUBE).
- SELF-CONTAINED CASE SERVICE ACCESS AREA.
- REFRIGERATION LINE CONNECTION.
- DRY CASE SERVICE ACCESS AREA.

Model Technical Specifications

Model	L"	L1"	L2"	System Circuit Volts			Phs	Freq	Amps ***	Watts	Wires	NEMA Plug	SST	Conv. Rack RTU/H	Para. Rack RTU/H	Est Wt
B2432H	22.00	24.75	.00	Heat (N/A)	Circuit #1	208-240	1	60	14.41	2,976	2+G	6-20P or L6-20P	N/A	N/A	N/A	800
B3632H	34.00	36.75	.00	Heat (N/A)	Circuit #1	208-240	1	60	21.49	4,487	2+G	6-30P or L6-30P	N/A	N/A	N/A	1,000

*** Does not include electric defrost on freezer models.

Regulatory Approvals:

All Models ETL Listed to UL 197
ETL Listed to CAN/CSA 22.2 No. 109
ETL Sanitation to NSF/ANSI 4

DOE 2017
Energy Efficiency
Compliant

Important Notes:

- ELECTRICAL NOTE: If GFCI is required, a GFCI breaker MUST be used in lieu of a GFCI receptacle
- Performance issues (product temperatures, water on floor, etc.) caused by adverse conditions are not covered by warranty.
- Keep unit at least 15' from exterior doors, overhead HVAC vents, or any air curtain disruption.
- Do not expose unit to direct sunlight or any heat source (ovens, fryers, etc.).

⚠ WARNING: This product can expose you to chemicals, including Urethane (Ethyl Carbamate), which are known to the State of California to cause cancer and birth defects or other reproductive harm. For more information go to www.P65Warnings.ca.gov.