

# Technical Information

Fusion - Self-Service Refrigerated Open Reach-In - 84"H

Structural Concepts®

DELIVERING FRESH. ALWAYS.™

DIMENSIONS / SHIPPING				
Model	L"	L1"	L2"	Est Wt (lbs)
MD884R	96.000	98.250	4.125	1,750

ELECTRICAL															
Model	System Circuit Volts			Ph	Frq	Rated Load Amps	Min Cir Amps	Max OCP Amps	Watts	Wires	NEMA Plug	Amps Lights	Amps Fans	Amps Anti-Sweats	Amps Misc/Refrig/Heat
MD884R	Remote (DX)	Circuit #1	110-120	1	60	4.44	15	15	269	2+G	Leads Single	2.80	1.20	0.36	0.08

REFRIGERATION													
Model	Zone	Section	System	Envt	REMOTE REFRIGERATION					GLYCOL / R744 REFRIGERATION			
					SST (°F)	Conv. Rack BTUH	Para. Rack BTUH	Defrost Interval (Hrs)	Defrost Duration	Total GPM	Pressure Drop (psi)	Concent (%)	Liquid Temp (°F)
MD884R	All	Main	Remote-DX	Type I	20	13,824	12,800	4.00	30.00	N/A	N/A	N/A	N/A

**INTENDED ENVIRONMENT**  
 Type I - Designed to operate in ambient conditions of 75°F with 55% relative humidity unless noted otherwise under Envt above.

**WARMEST AVERAGE PRODUCT TEMP & INTENDED USE OF ZONES**

Zone	Temp (°F)	Intended Use
1	40	Packaged / unpackaged refrigerated products

**IMPORTANT NOTES**

- 1) REMOTE REFRIGERATION NOTE: Condensing unit not included, floor drain required.
- 2) Units must be shimmed during installation to ensure the unit is level and plumb.

REGULATORY	
All Models	Accordance with AHRI Std 1200 ETL Listed to UL 471 ETL Listed to CAN/CSA 22.2 No. 120 ETL Sanitation to NSF/ANSI 7



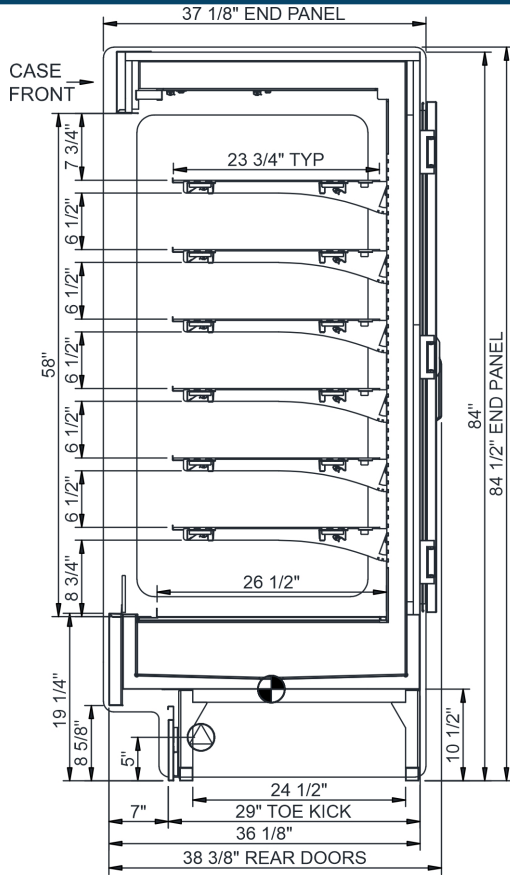
In Accordance with  
**AHRI Std 1200**

# Technical Information

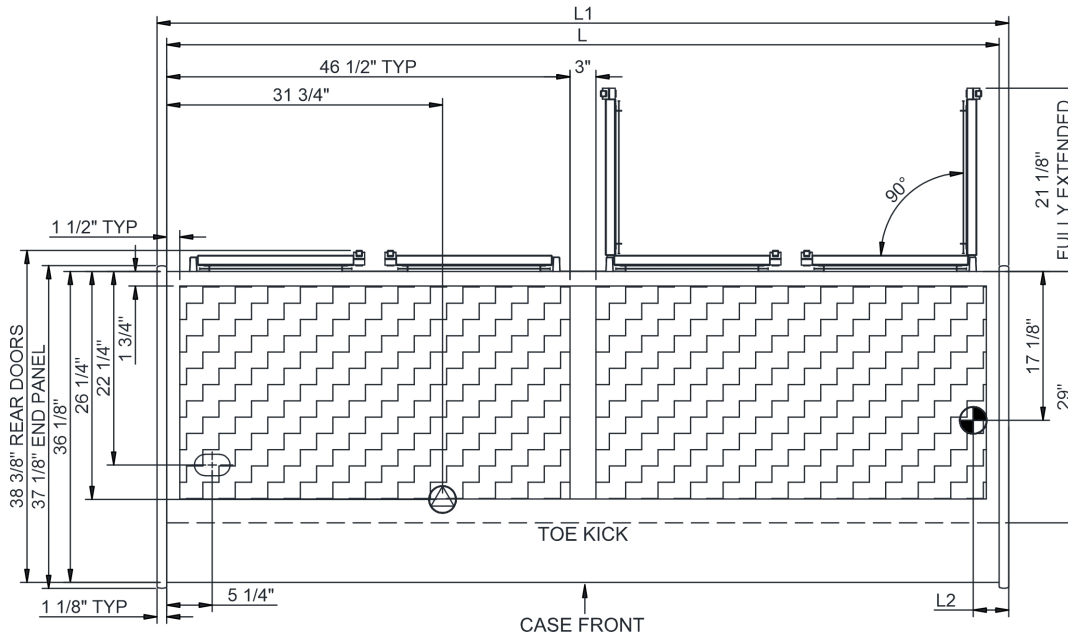
Fusion - Self-Service Refrigerated Open Reach-In - 84"H

Structural Concepts®


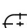



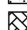
DELIVERING FRESH. ALWAYS.™



REAR DOORS OPENING  
17" WD x 57 3/4" HT x QTY4



NOTE: ALL DIMENSIONS APPROXIMATE

-  ELECTRICAL JUNCTION BOX (SUPPLIED WITH 6" LEADS OR POWER CORD).
-  REFRIGERATION LINE CONNECTION.
-  SELF-CONTAINED CASE SERVICE ACCESS AREA.
-  LOCATION OF DRAIN TUBE FOR REMOTE REF. ONLY (SUPPLIED WITH 3/4" OR 1 1/2" PVC TUBE).
-  REMOTE FLOOR SINK & UTILITIES ACCESS AREA.
-  DRY CASE SERVICE ACCESS AREA.