

Technical Information

Oasis - Refrigerated Self-Service Case 24"D

Structural Concepts®

DELIVERING FRESH. ALWAYS.™

DIMENSIONS / SHIPPING

Model	L"	L1"	L2"	Est Wt (lbs)
B3424	32.000	34.500	3.125	N/A
B4524	43.000	45.500	3.125	N/A
B6624	63.875	66.375	3.125	N/A

ELECTRICAL

Model	System Circuit Volts			Ph	Frq	Rated Load Amps	Min Cir Amps	Max OCP Amps	Watts	Wires	NEMA Plug	Amps Lights	Amps Fans	Amps Anti-Sweats	Amps Misc/Refrig/Heat
B3424	Remote (DX)	Circuit #1	110-120	1	60	1.20	15	15	60	2+G	Leads Single	0.70	0.30	0.12	0.08
B4524	Remote (DX)	Circuit #1	110-120	1	60	1.26	15	15	77	2+G	Leads Single	0.70	0.30	0.18	0.08
B6624	Remote (DX)	Circuit #1	110-120	1	60	1.92	15	15	130	2+G	Leads Single	0.70	0.90	0.24	0.08

REFRIGERATION

Model	Zone	Section	System	Envt	REMOTE REFRIGERATION					GLYCOL / R744 REFRIGERATION			
					SST (°F)	Conv. Rack BTUH	Para. Rack BTUH	Defrost Interval (Hrs)	Defrost Duration	Total GPM	Pressure Drop (psi)	Concent (%)	Liquid Temp (°F)
B3424	All	Refrigerator	Remote-DX	Type II	20	5,098	4,720	4.00	30.00	N/A	N/A	N/A	N/A
B4524	All	Refrigerator	Remote-DX	Type II	20	5,659	5,240	4.00	25.00	N/A	N/A	N/A	N/A
B6624	All	Refrigerator	Remote-DX	Type II	20	5,659	5,240	4.00	25.00	N/A	N/A	N/A	N/A

INTENDED ENVIRONMENT

Type II - Designed to operate in ambient conditions of 80°F and 55% relative humidity unless noted otherwise under Envt above.

WARMEST AVERAGE PRODUCT TEMP & INTENDED USE OF ZONES

Zone	Temp (°F)	Intended Use
1	40	Packaged refrigerated products

IMPORTANT NOTES

- 1) ELECTRICAL NOTE: If GFCI is required, a GFCI breaker MUST be used in lieu of a GFCI receptacle
- 2) Performance issues (product temperatures, water on floor, etc.) caused by adverse conditions are not covered by warranty.
- 3) Keep unit at least 15' from exterior doors, overhead HVAC vents, or any air curtain disruption.
- 4) End panels must be tightly joined or kept at least 6" away from any structure to prevent condensation.
- 5) Do not expose unit to direct sunlight or any heat source (ovens, fryers, etc.).
- 6) Tile floors, low ceilings, or small rooms will increase noise level.
- 7) Compressor air lower front intake and upper front discharge. Front panel cannot be blocked.

REGULATORY

All Models	Accordance with AHRI Std 1200 ETL Listed to UL 471 ETL Listed to CAN/CSA 22.2 No. 120 ETL Sanitation to NSF/ANSI 7
------------	---



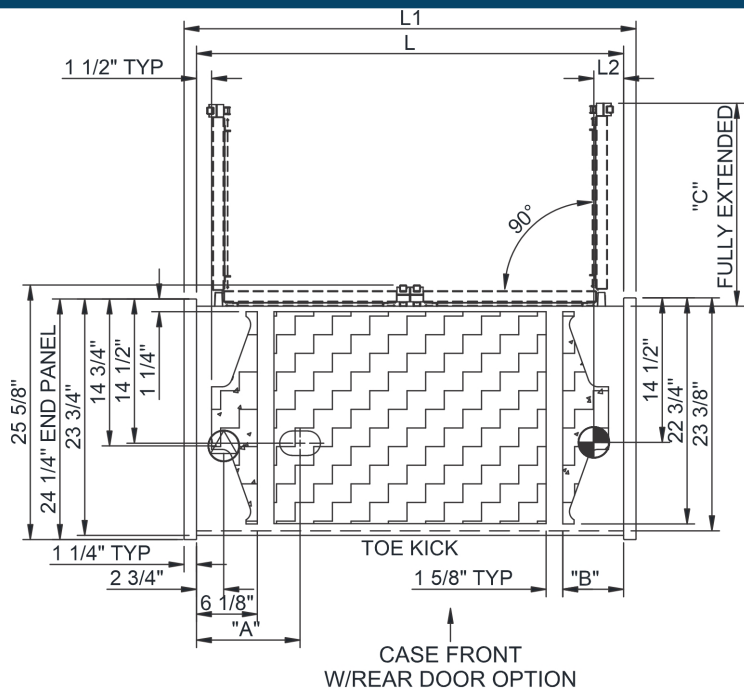
In Accordance with
AHRI Std 1200

Technical Information

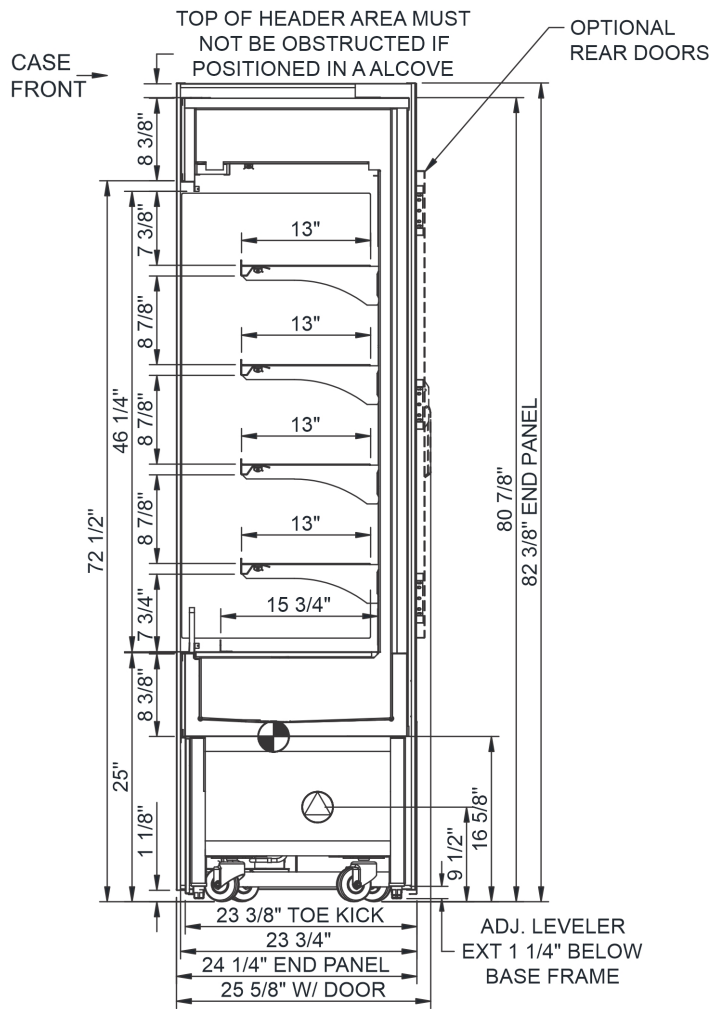
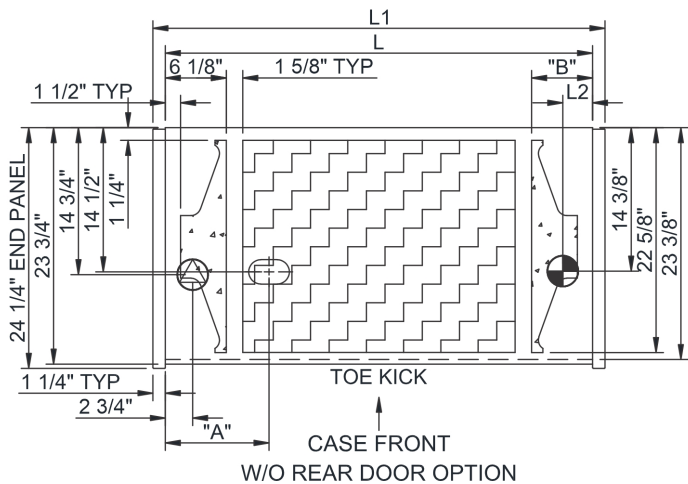
Oasis - Refrigerated Self-Service Case 24"D

Structural Concepts®

DELIVERING FRESH. ALWAYS.™



	"A"	"B"	"C"
B3424	7"	N/A	29 1/2"
B4524	7"	6 1/8"	20 3/8"
B6624	10 3/8"	6 1/8"	N.A.



NOTE: ALL DIMENSIONS APPROXIMATE

- ELECTRICAL JUNCTION BOX (SUPPLIED WITH 6" LEADS OR POWER CORD).
- LOCATION OF DRAIN TUBE FOR REMOTE REF. ONLY (SUPPLIED WITH 3/4" OR 1 1/2" PVC TUBE).

- REFRIGERATION LINE CONNECTION.
- REMOTE FLOOR SINK & UTILITIES ACCESS AREA.

- SELF-CONTAINED CASE SERVICE ACCESS AREA.
- DRY CASE SERVICE ACCESS AREA.