

- **B3424** 34-1/2"L x 24-1/4"D x 82-3/8"H
- **B4524** 45-1/2"L x 24-1/4"D x 82-3/8"H
- **B6624** 66-3/8"L x 24-1/4"D x 82-3/8"H

Included

- Remote DX refrigeration w/thermostat, solenoid & TXV
- Blue Fin coated coil
- LED 4000K top light(s)
- One piece formed ABS plastic tub
- One year parts & labor warranty
- Removable deck pans provide complete access to evaporator coil & refrigeration connections
- Shelving removable and adjustable on 1" centers
- Warmest average product temperature of 40°F or less



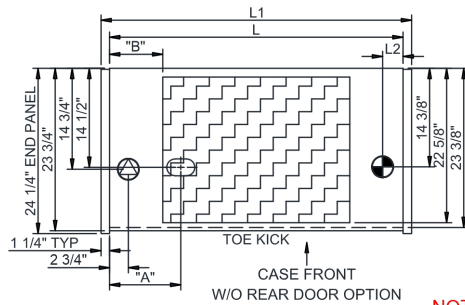
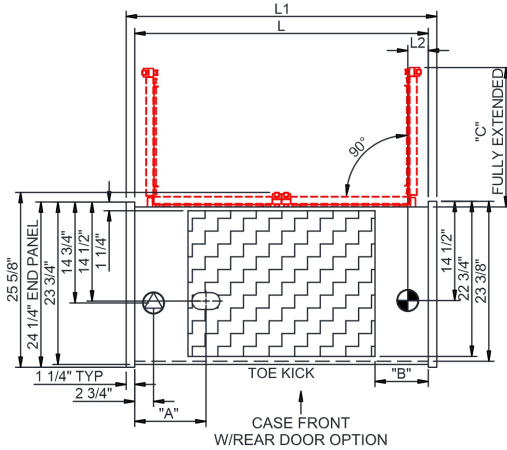
B3424

Specify	Standard Features	Additional Options
EXTERIOR COLOR	• Powder coated Silversan Black	• Laminate (stock/non-stock colors) • Stainless steel
INTERIOR COLOR	• Powder coated Silversan Black	• Stainless steel
LOWER FRONT PANEL COLOR	• Powder coated Silversan Black	• Stainless steel (must choose stainless exterior)
REAR EXTERIOR COLOR	• Powder coated Silversan Black	• Powder coated Designer White
BASE SUPPORT	• Levelers (remote)	• Seismic levelers
END PANELS	• Full w/stainless steel mirror interior	• Cutaway w/glass • None (synchronized defrost required)
COVER/CURTAIN	• None	• Night curtain, retractable, non-locking • Removable solid security cover, locking
PRICE TAG MOLDING	• None	• Price tag molding (matches interior color)
REAR DOORS	• None (solid back panel)	• Rear loading hinged doors, locking
SHELVING	• Metal shelves (4), non-lighted	• Metal shelves (4), lighted (LED 4000K)
ELECTRICAL CONNECTION	• Electrical leads (remote)	
REFRIGERATION	• Remote w/thermostat, solenoid & TXV	• Note: Remote doesn't incl Conds unit. Floor drain reqd.
MISCELLANEOUS		• Second year parts & labor warranty • Shelf w/ extended product stop & air deflectors for salad bins

Option Notes: 1 - One cover curtain/type per model

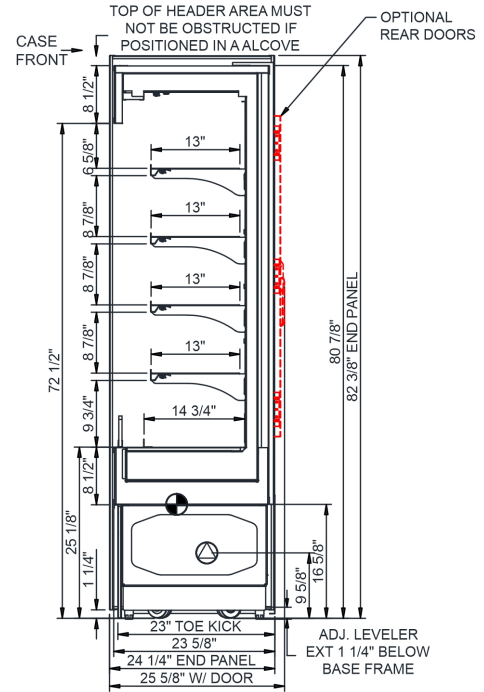
Intended Environment: Type II - Designed to operate in ambient conditions of 80°F and 55% relative humidity unless noted otherwise in system information below.		
Zone	Intended Product To Be Displayed	Warmest Avg Prod Temp ° F
1	Packaged refrigerated products-Prechilled to Warmest Avg Prod Temp.	40

PLAN VIEW



	"A"	"B"	"C"
B3424	7"	N/A	29 1/2"
B4524	7"	7 3/4"	20 3/8"
B6624	10 3/8"	7 3/4"	N.A.

SIDE VIEW



NOTE: ALL DIMENSIONS APPROXIMATE

- ELECTRICAL JUNCTION BOX (SUPPLIED WITH 6" LEADS OR POWER CORD).
- LOCATION OF DRAIN TUBE FOR REMOTE REF. ONLY (SUPPLIED WITH 3/4" OR 1 1/2" PVC TUBE).

- REFRIGERATION LINE CONNECTION.
- REMOTE FLOOR SINK & UTILITIES ACCESS AREA.

- SELF-CONTAINED CASE SERVICE ACCESS AREA.
- DRY CASE SERVICE ACCESS AREA.

Model Technical Specifications

Model	L"	L1"	L2"	System Circuit Volts	Phs	Freq	Amps ***	Watts	Wires	NEMA Plug	SST	Conv. Rack RTUH	Para. Rack RTUH	Est Wt		
B3424	32.00	34.50	3.13	Remote (DX)	Circuit #1	110-120	1	60	1.20	59	2+G	Leads Single	20.00	5098	4720	800
B4524	43.00	45.50	3.13	Remote (DX)	Circuit #1	110-120	1	60	1.26	75	2+G	Leads Single	20.00	5659	5240	900
B6624	63.88	66.38	3.13	Remote (DX)	Circuit #1	110-120	1	60	1.92	126	2+G	Leads Single	20.00	5659	5240	1,100

*** Does not include electric defrost on freezer models.

Regulatory Approvals:

All Models
 Accordance with AHRI Std 1200
 ETL Listed to UL 471
 ETL Listed to CAN/CSA 22.2 No. 120
 UL Sanitation to NSF Std 7



In Accordance with
AHRI Std 1200

DOE 2017
 Energy Efficiency
 Compliant

Important Notes:

- ELECTRICAL NOTE: If GFCI is required, a GFCI breaker MUST be used in lieu of a GFCI receptacle
- Performance issues (product temperatures, water on floor, etc.) caused by adverse conditions are not covered by warranty.
- Keep unit at least 15' from exterior doors, overhead HVAC vents, or any air curtain disruption.
- End panels must be tightly joined or kept at least 6" away from any structure to prevent condensation.
- Do not expose unit to direct sunlight or any heat source (ovens, fryers, etc.).
- Tile floors, low ceilings, or small rooms will increase noise level.

⚠ WARNING: This product can expose you to chemicals, including Urethane (Ethyl Carbamate), which are known to the State of California to cause cancer and birth defects or other reproductive harm. For more information go to www.P65Warnings.ca.gov.