

Technical Information

Oasis - Micromarket Refrigerated Self-Service Case 32"D

Structural Concepts®

DELIVERING FRESH. ALWAYS.™

DIMENSIONS / SHIPPING

Model	L"	L1"	L2"	Est Wt (lbs)
BV3632	33.875	36.625	3.000	N/A
BV4732	44.875	47.625	3.000	N/A
BV5932	56.875	59.625	3.000	N/A
BV7132	68.875	71.625	3.000	N/A

ELECTRICAL

Model	System Circuit Volts			Ph	Frq	Rated Load Amps	Min Cir Amps	Max OCP Amps	Watts	Wires	NEMA Plug	Amps Lights	Amps Fans	Amps Anti-Sweats	Amps Misc/Refrig/Heat
BV3632	Remote (DX)-Type II Env	Circuit #1	110-120	1	60	1.13	15	15	99	2+G	Leads Multiple	0.83	0.30		N/A
	Remote (DX)-Type I Env	Circuit #1	110-120	1	60	1.13	15	15	99	2+G	Leads Multiple	0.83	0.30		N/A
	Self-Contained (R449A)-Type II Env	Circuit #1	110-120	1	60	16.00	20	20	1,371	2+G	5-20P or L5-20P	0.70	0.96	4.10	10.50
BV4732	Remote (DX)-Type II Env	Circuit #1	110-120	1	60	1.47	15	15	139	2+G	Leads Multiple	1.17	0.30		N/A
	Remote (DX)-Type I Env	Circuit #1	110-120	1	60	1.47	15	15	139	2+G	Leads Multiple	1.17	0.30		N/A
	Self-Contained (R449A)-Type II Env	Circuit #1	208-240	1	60	9.55	20	20	1,750	2+G	6-20P or L6-20P	0.36	0.86	2.23	6.10
BV5932	Remote (DX)-Type I Env	Circuit #1	110-120	1	60	1.52	15	15	98	2+G	Leads Multiple	0.70	0.60	0.22	N/A
	Remote (DX)-Type II Env	Circuit #1	110-120	1	60	1.52	15	15	98	2+G	Leads Multiple	0.70	0.60	0.22	N/A
	Self-Contained (R449A)-Type II Env	Circuit #1	208-240	1	60	12.00	20	20	2,309	2+G	6-20P or L6-20P	0.36	1.18	3.52	7.70
BV7132	Remote (DX)-Type II Env	Circuit #1	110-120	1	60	2.36	15	15	238	2+G	Leads Multiple	1.68	0.60		0.08
	Remote (DX)-Type I Env	Circuit #1	110-120	1	60	2.36	15	15	238	2+G	Leads Multiple	1.68	0.60		0.08
	Self-Contained (R449A)-Type II Env	Circuit #1	208-240	1	60	15.32	20	20	2,902	2+G	6-20P or L6-20P	0.36	1.16	3.55	10.25

REFRIGERATION

Model	Zone	Section	System	Env	REMOTE REFRIGERATION					GLYCOL / R744 REFRIGERATION			
					SST (°F)	Conv. Rack BTUH	Para. Rack BTUH	Defrost Interval (Hrs)	Defrost Duration	Total GPM	Pressure Drop (psi)	Concent (%)	Liquid Temp (°F)
BV3632	All	Main	Remote-DX-Type II Env	Type II	20	4,320	4,000	4.00	25.00	N/A	N/A	N/A	N/A
	All	Main	Remote-DX-Type I Env	Type I	20	3,542	3,280	4.00	25.00	N/A	N/A	N/A	N/A
	All	Refrigerator	Self-Contained-R449A-Type II Env	Type II	N/A	N/A	N/A	N/A	N/A	N/A	N/A	N/A	N/A
BV4732	All	Main	Remote-DX-Type II Env	Type II	20	5,918	5,480	4.00	25.00	N/A	N/A	N/A	N/A
	All	Main	Remote-DX-Type I Env	Type I	20	4,882	4,520	4.00	25.00	N/A	N/A	N/A	N/A
	All	Refrigerator	Self-Contained-R449A-Type II Env	Type II	N/A	N/A	N/A	N/A	N/A	N/A	N/A	N/A	N/A
BV5932	All	Main	Remote-DX-Type I Env	Type I	20	5,746	5,320	4.00	25.00	N/A	N/A	N/A	N/A
	All	Main	Remote-DX-Type II Env	Type II	20	7,042	6,520	4.00	25.00	N/A	N/A	N/A	N/A
	All	Refrigerator	Self-Contained-R449A-Type II Env	Type II	N/A	N/A	N/A	N/A	N/A	N/A	N/A	N/A	N/A
BV7132	All	Main	Remote-DX-Type II Env	Type II	20	8,618	7,980	4.00	25.00	N/A	N/A	N/A	N/A
	All	Main	Remote-DX-Type I Env	Type I	20	7,042	6,520	4.00	25.00	N/A	N/A	N/A	N/A
	All	Refrigerator	Self-Contained-R449A-Type II Env	Type II	N/A	N/A	N/A	N/A	N/A	N/A	N/A	N/A	N/A

Technical Information

Oasis - Micromarket Refrigerated Self-Service Case 32"D

Structural Concepts®

DELIVERING FRESH. ALWAYS.™

INTENDED ENVIRONMENT

Type II - Designed to operate in ambient conditions of 80°F and 55% relative humidity unless noted otherwise under Env't above.

WARMEST AVERAGE PRODUCT TEMP & INTENDED USE OF ZONES

Zone	Temp (°F)	Intended Use
1	40	Packaged refrigerated products

IMPORTANT NOTES

- 1) ELECTRICAL NOTE: If GFCI is required, a GFCI breaker MUST be used in lieu of a GFCI receptacle
- 2) Health safety automatic closing door system requires dedicated 120 Volt, 15 Amp circuit. Electrical info for door = 120/1/60, 0.90 amps, 5-15P NEMA Plug.
- 3) Performance issues (product temperatures, water on floor, etc.) caused by adverse conditions are not covered by warranty.
- 4) Keep unit at least 15' from exterior doors, overhead HVAC vents, or any air curtain disruption.
- 5) End panels must be tightly joined or kept at least 6" away from any structure to prevent condensation.
- 6) Do not expose unit to direct sunlight or any heat source (ovens, fryers, etc.).
- 7) Tile floors, low ceilings, or small rooms will increase noise level.
- 8) Compressor air lower front intake and upper front discharge. Front panel cannot be blocked.

REGULATORY

All Models

Accordance with AHRI Std 1200
ETL Listed to UL 471
ETL Listed to CAN/CSA 22.2 No. 120
ETL Sanitation to NSF/ANSI 7



In Accordance with
AHRI Std 1200

NOTE: ALL DIMENSIONS APPROXIMATE



ELECTRICAL JUNCTION BOX
(SUPPLIED WITH 6" LEADS OR POWER CORD).
LOCATION OF DRAIN TUBE FOR REMOTE REF.
ONLY (SUPPLIED WITH 3/4" OR 1 1/2" PVC TUBE).



REFRIGERATION LINE CONNECTION.
REMOTE FLOOR SINK & UTILITIES
ACCESS AREA.



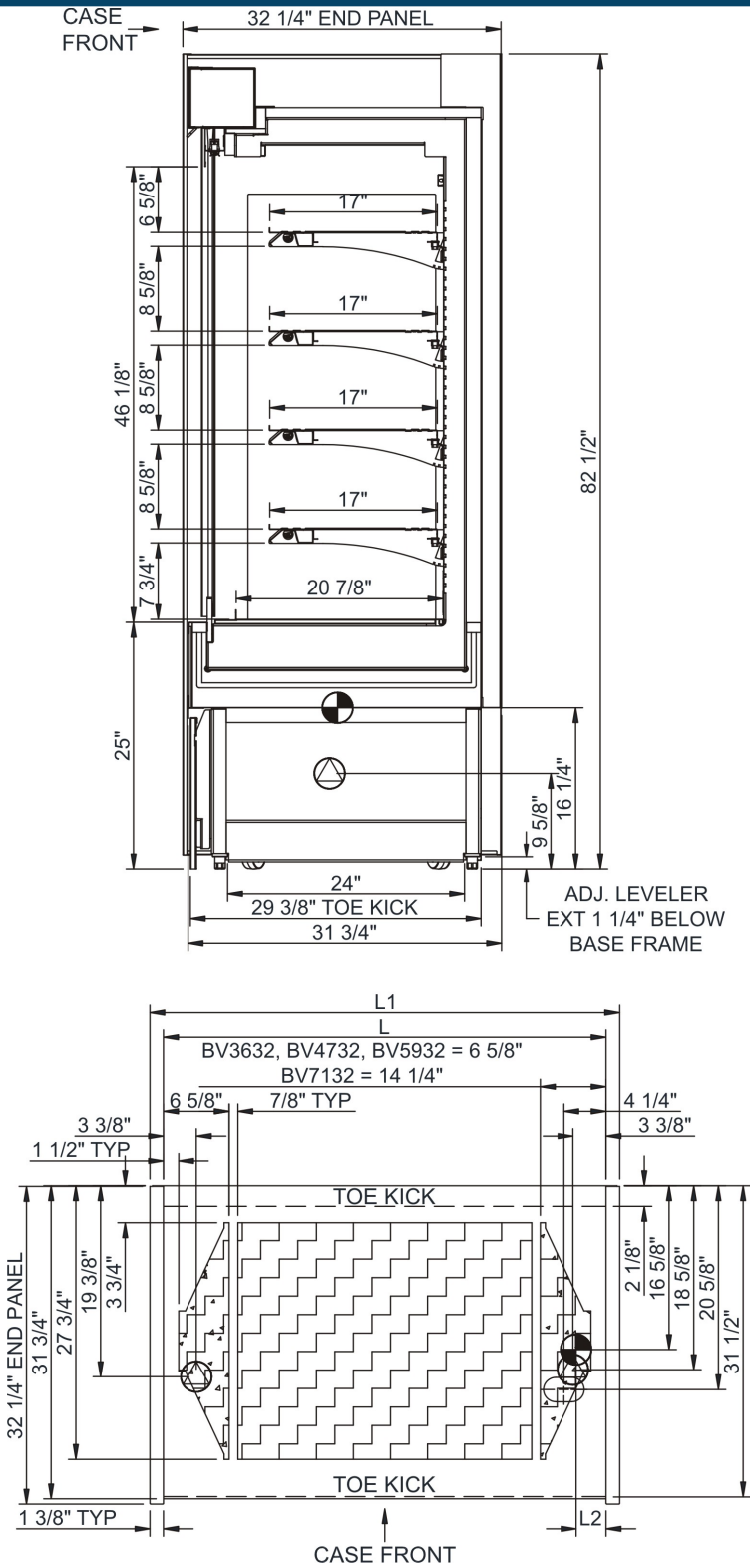
SELF-CONTAINED CASE SERVICE ACCESS AREA.



DRY CASE SERVICE ACCESS AREA.

Technical Information

Oasis - Micromarket Refrigerated Self-Service Case 32"D



NOTE: ALL DIMENSIONS APPROXIMATE

- 

ELECTRICAL JUNCTION BOX
(SUPPLIED WITH 6" LEADS OR POWER CORD).
- 

REFRIGERATION LINE CONNECTION.
- 

SELF-CONTAINED CASE SERVICE ACCESS AREA.
- 

LOCATION OF DRAIN TUBE FOR REMOTE REF.
ONLY (SUPPLIED WITH 3/4" OR 1 1/2" PVC TUBE).
- 

REMOTE FLOOR SINK & UTILITIES
ACCESS AREA.
- 

DRY CASE SERVICE ACCESS AREA.