

- **BV3632** 36-5/8"L x 32-1/4"D x 82-1/2"H
- **BV4732** 47-5/8"L x 32-1/4"D x 82-1/2"H
- **BV5932** 59-5/8"L x 32-1/4"D x 82-1/2"H
- **BV7132** 71-5/8"L x 32-1/4"D x 82-1/2"H

## Included

- Health safety automatic closing door system (includes battery backup)  
(requires dedicated 120 Volt, 15 Amp circuit)
- Breeze~E (Type-II) self-contained refrigeration
- Blue Fin coated coil
- Clean Sweep® coil cleaner (self-cont.)
- Condensate pan (self-contained refrig. only)
- Integrated average product temperature of 40°F or less
- LED 4000K top light(s)
- One piece formed ABS plastic tub
- One year parts & labor; 5 year compressor warranty
- Shelving removable and adjustable on 1" centers



**BV4732**

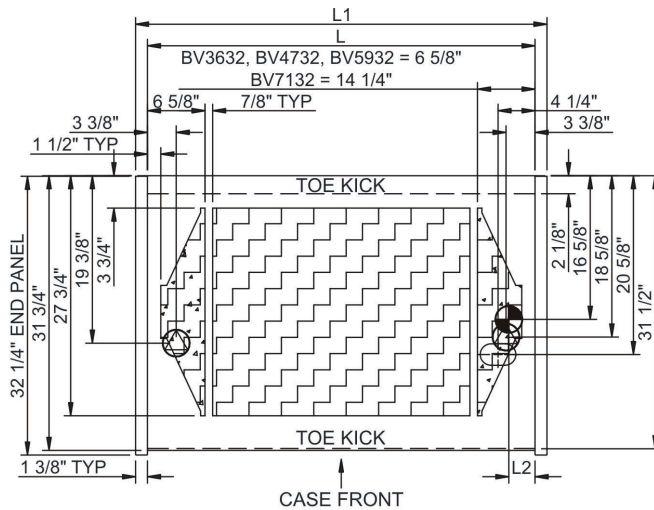
Specify	Standard Features	Additional Options
<b>EXTERIOR COLOR</b>	• Laminate (stock colors)	• Laminate (non-stock colors) • Stainless steel
<b>INTERIOR COLOR</b>	• Powder coated Silversan Black	• Stainless steel
<b>LOWER FRONT PANEL COLOR</b>	• Powder coated Silversan Black	• Stainless steel (must choose stainless exterior)
<b>REAR EXTERIOR COLOR</b>	• Black	
<b>BASE SUPPORT</b>	• Casters w/ levelers	• Levelers (only) • Seismic levelers
<b>END PANELS</b>	• Full w/stainless steel mirror interior	• Cutaway w/glass
<b>SHELVING</b>	• Metal shelves, non-lighted	• Metal shelves, lighted (LED 4000K)
<b>ELECTRICAL CONNECTION</b>	• 6' Straight blade power cord (base exit)	• 6' Locking blade power cord (base exit) • 6' Locking blade power cord (top exit) • 6' Straight blade power cord (top exit) • Electrical leads (remote)
<b>REFRIGERATION</b>	• Breeze~E (Type-II) self-contained refrigeration	• Note: Remote doesn't incl Conds unit. Floor drain reqd. 1 • Remote w/thermostat, solenoid & TXV
<b>MISCELLANEOUS</b>		• Second year parts & labor warranty (excludes compressor)
<b>ACCESSORIES</b>		• Price tag molding (matches interior color)

Option Notes: 1 - See tech spec for load reqmts

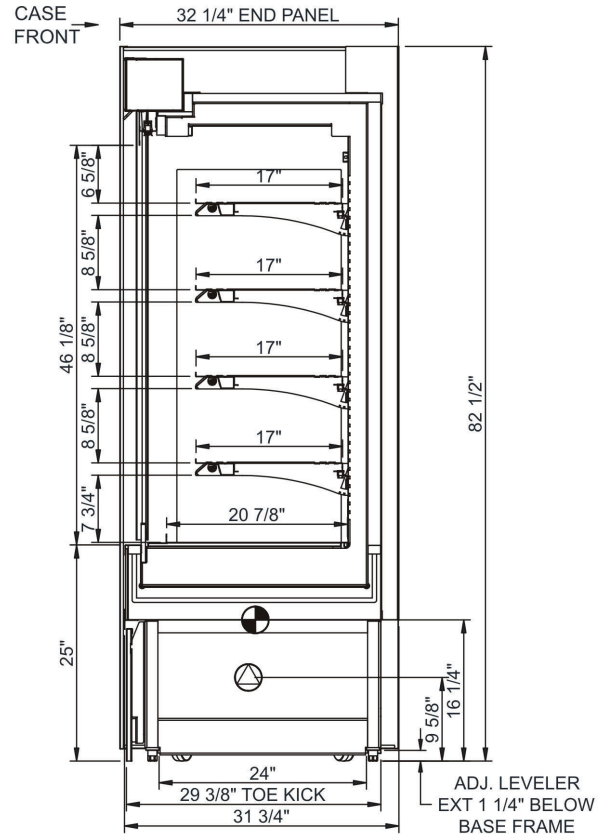
**Intended Environment:** Type II - Designed to operate in ambient conditions of 80°F and 55% relative humidity unless noted otherwise in system information below.

Zone	Intended Product To Be Displayed	Warmest Avg Prod Temp ° F
1	Packaged refrigerated products	40

PLAN VIEW



SIDE VIEW



## NOTE: ALL DIMENSIONS APPROXIMATE

- ELECTRICAL JUNCTION BOX (SUPPLIED WITH 6\"/>

Model Technical Specifications														
Model	L"	L1"	L2"	System Circuit Volts			Phs	Freq	Amps ***	Watts	Wires	NEMA Plug	SST	Conv. Rack BTU/H
BV3632	33.88	36.63	3.00	Remote (DX)	Circuit #1	110-120	1	60	1.13	99	2+G	Leads Multiple	20.00	4320
				Self-Contained (R449A)	Circuit #1	110-120	1	60	16.00	1,371	2+G	5-20P or L5-20P	N/A	N/A
BV4732	44.88	47.63	3.00	Remote (DX)	Circuit #1	110-120	1	60	1.47	139	2+G	Leads Multiple	20.00	5918
				Self-Contained (R449A)	Circuit #1	208-240	1	60	9.55	1,750	2+G	6-20P or L6-20P	N/A	N/A
BV5932	56.88	59.63	3.00	Remote (DX)	Circuit #1	110-120	1	60	1.52	98	2+G	Leads Multiple	20.00	7042
				Self-Contained (R449A)	Circuit #1	208-240	1	60	12.00	2,309	2+G	6-20P or L6-20P	N/A	N/A
BV7132	68.88	71.63	3.00	Remote (DX)	Circuit #1	110-120	1	60	2.36	238	2+G	Leads Multiple	20.00	8618
				Self-Contained (R449A)	Circuit #1	208-240	1	60	15.32	2,902	2+G	6-20P or L6-20P	N/A	N/A

\*\*\* Does not include electric defrost on freezer models.

## Regulatory Approvals:

All Models  
 Accordance with AHRI Std 1200  
 ETL Listed to UL 471  
 ETL Listed to CAN/CSA 22.2 No. 120  
 ETL Sanitation to NSF/ANSI 7



In Accordance with  
**AHRI Std 1200**

**DOE 2017**  
 Energy Efficiency  
 Compliant

## Important Notes:

- 1) ELECTRICAL NOTE: If GFCI is required, a GFCI breaker MUST be used in lieu of a GFCI receptacle
- 2) Health safety automatic closing door system requires dedicated 120 Volt, 15 Amp circuit. Electrical info for door = 120/1/60, 0.90 amps, 5-15P NEMA Plug.
- 3) Performance issues (product temperatures, water on floor, etc.) caused by adverse conditions are not covered by warranty.
- 4) Keep unit at least 15' from exterior doors, overhead HVAC vents, or any air curtain disruption.
- 5) End panels must be tightly joined or kept at least 6" away from any structure to prevent condensation.
- 6) Do not expose unit to direct sunlight or any heat source (ovens, fryers, etc.).
- 7) Tile floors, low ceilings, or small rooms will increase noise level.
- 8) Compressor air lower front intake and upper front discharge. Front panel cannot be blocked.

**⚠ WARNING:** This product can expose you to chemicals, including Urethane (Ethyl Carbamate), which are known to the State of California to cause cancer and birth defects or other reproductive harm. For more information go to [www.P65Warnings.ca.gov](http://www.P65Warnings.ca.gov).