

Technical Information

Reveal® - Refrigerated Self-Service Case

Structural Concepts®

DELIVERING FRESH. ALWAYS.™

DIMENSIONS / SHIPPING

Model	L"	L1"	L2"	Est Wt (lbs)
NR3655RSSV	N/A	35.750	7.500	N/A
NR4855RSSV	N/A	47.750	7.500	N/A
NR6055RSSV	N/A	59.750	7.500	N/A
NR7255RSSV	N/A	71.750	7.500	N/A

ELECTRICAL

Model	System Circuit Volts			Ph	Frq	Rated Load Amps	Min Cir Amps	Max OCP Amps	Watts	Wires	NEMA Plug	Amps Lights	Amps Fans	Amps Anti-Sweats	Amps Misc/Refrig/Heat
NR3655RSSV	Remote (DX)	Circuit #1	110-120	1	60	1.20	15	15	54	2+G	Leads Single	0.70	0.30	0.12	0.08
	Remote (DX)	Circuit #1	110-120	1	60	1.20	15	15	54	2+G	Leads Single	0.70	0.30	0.12	0.08
	Self-Contained (R290)	Circuit #1	110-120	1	60	15.15	20	20	1,515	2+G	5-20P or L5-20P	N/A	0.45	4.08	10.62
NR4855RSSV	Remote (DX)	Circuit #1	110-120	1	60	1.56	15	15	82	2+G	Leads Single	0.70	0.60	0.18	0.08
	Remote (DX)	Circuit #1	110-120	1	60	1.56	15	15	82	2+G	Leads Single	0.70	0.60	0.18	0.08
	Self-Contained (R290)	Circuit #1	208-240	1	60	16.00	20	20	2,802	2+G	6-20P or L6-20P	N/A	0.44	3.50	13.61
NR6055RSSV	Remote (DX)	Circuit #1	110-120	1	60	1.60	15	15	92	2+G	Leads Single	0.70	0.60	0.22	0.08
	Remote (DX)	Circuit #1	110-120	1	60	1.60	15	15	92	2+G	Leads Single	0.70	0.60	0.22	0.08
	Remote (R744 T)	Circuit #1	110-120	1	60	1.60	15	15	92	2+G	Leads Single	0.70	0.60	0.22	0.08
	Remote (R744 T)	Circuit #1	110-120	1	60	1.60	15	15	92	2+G	Leads Single	0.70	0.60	0.22	0.08
	Self-Contained (R290)	Circuit #1	208-240	1	60	16.00	20	20	2,821	2+G	6-20P or L6-20P	N/A	0.44	3.52	13.61
NR7255RSSV	Remote (DX)	Circuit #1	110-120	1	60	1.64	15	15	105	2+G	Leads Single	0.70	0.60	0.26	0.08
	Remote (DX)	Circuit #1	110-120	1	60	1.64	15	15	105	2+G	Leads Single	0.70	0.60	0.26	0.08
	Self-Contained (R290)	Circuit #1	208-240	1	60	16.00	20	20	2,838	2+G	6-20P or L6-20P	0.61	0.44	3.54	13.00

REFRIGERATION

Model	Zone	Section	System	Env't	REMOTE REFRIGERATION					GLYCOL / R744 REFRIGERATION			
					SST (°F)	Conv. Rack BTUH	Para. Rack BTUH	Defrost Interval (Hrs)	Defrost Duration	Total GPM	Pressure Drop (psi)	Concent (%)	Liquid Temp (°F)
NR3655RSSV	All	Refrigerator	Remote-DX	Type II	20	3,650	3,380	4.00	30.00	N/A	N/A	N/A	N/A
	All	Refrigerator	Remote-DX	Type I	20	2,938	2,720	4.00	30.00	N/A	N/A	N/A	N/A
	All	Main	Self-Contained-R290	Type II	N/A	N/A	N/A	N/A	N/A	N/A	N/A	N/A	N/A
NR4855RSSV	All	Refrigerator	Remote-DX	Type II	20	4,838	4,480	4.00	30.00	N/A	N/A	N/A	N/A
	All	Refrigerator	Remote-DX	Type I	20	3,888	3,600	4.00	30.00	N/A	N/A	N/A	N/A
	All	Main	Self-Contained-R290	Type II	N/A	N/A	N/A	N/A	N/A	N/A	N/A	N/A	N/A
NR6055RSSV	All	Refrigerator	Remote-DX	Type II	20	6,026	5,580	4.00	25.00	N/A	N/A	N/A	N/A
	All	Refrigerator	Remote-DX	Type I	20	4,860	4,500	4.00	25.00	N/A	N/A	N/A	N/A
	All	Refrigerator	Remote-R744 TRANSCRITICAL	Type II	20	6,026	5,580	4.00	25.00	N/A	N/A	N/A	N/A
	All	Refrigerator	Remote-R744 TRANSCRITICAL	Type I	20	4,860	4,500	4.00	25.00	N/A	N/A	N/A	N/A
	All	Main	Self-Contained-R290	Type II	N/A	N/A	N/A	N/A	N/A	N/A	N/A	N/A	N/A
NR7255RSSV	All	Refrigerator	Remote-DX	Type II	20	7,193	6,660	4.00	25.00	N/A	N/A	N/A	N/A
	All	Refrigerator	Remote-DX	Type I	20	5,789	5,360	4.00	25.00	N/A	N/A	N/A	N/A
	All	Refrigerator	Self-Contained-R290	Type II	N/A	N/A	N/A	N/A	N/A	N/A	N/A	N/A	N/A

INTENDED ENVIRONMENT

Type II - Designed to operate in ambient conditions of 80°F and 55% relative humidity unless noted otherwise under Env't above.

WARMEST AVERAGE PRODUCT TEMP & INTENDED USE OF ZONES

Zone	Temp (°F)	Intended Use
1	40	Packaged refrigerated products

REGULATORY

All Models	Accordance with AHRI Std 1200 ETL Listed to UL 471 ETL Listed to CAN/CSA 22.2 No. 120 ETL Sanitation to NSF/ANSI 7
------------	---

IMPORTANT NOTES

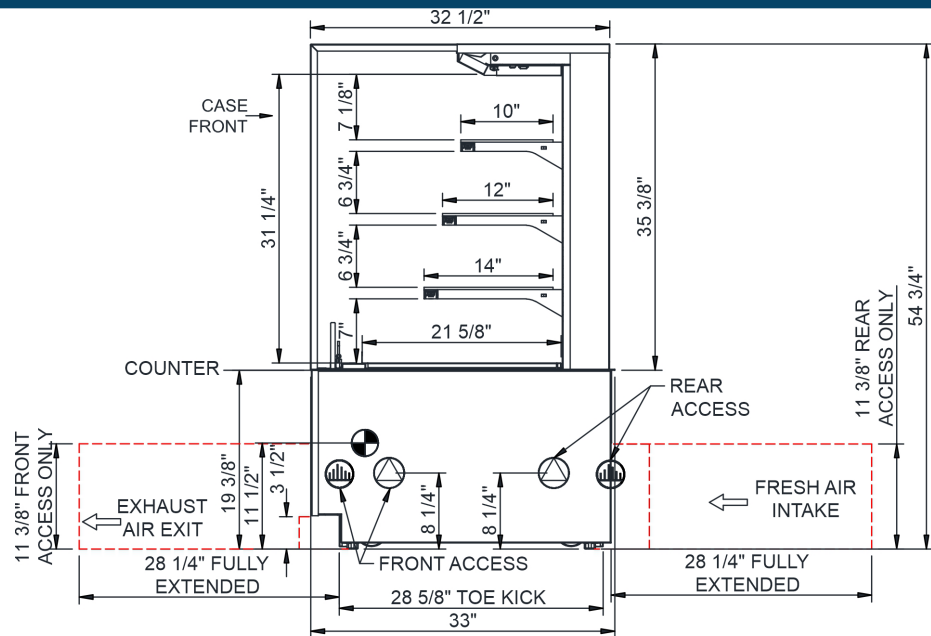
- 1) ELECTRICAL NOTE: If GFCI is required, a GFCI breaker MUST be used in lieu of a GFCI receptacle
- 2) Back side of counter must be open or vented the full length of the unit to allow proper ventilation for the refrigeration system.
- 3) Glass warranty only applicable to first point of delivery.



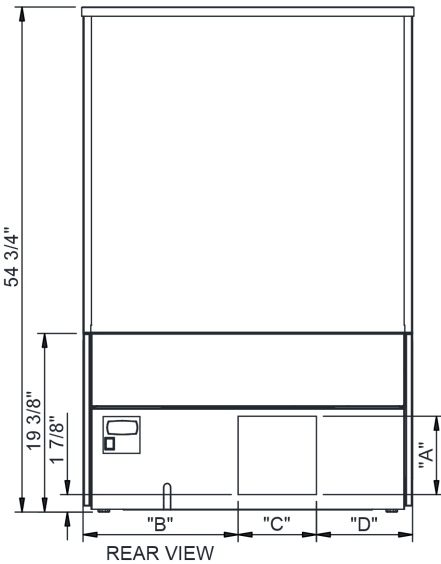
In Accordance with
AHRI Std 1200

Technical Information

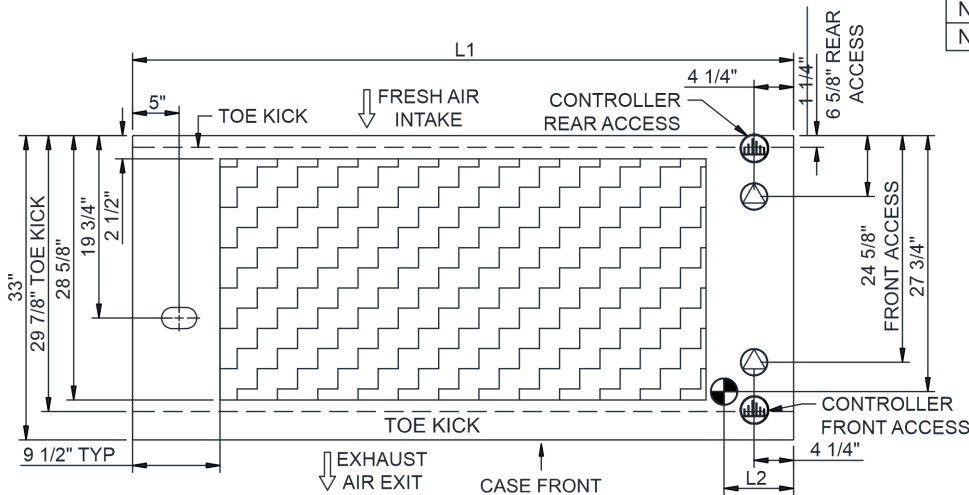
Reveal® - Refrigerated Self-Service Case



- NOTES:
- 1. 11 3/8" TALL, FULL WIDTH OF CASE OPENING IN CABINET OR COUNTER IS REQUIRED TO PULL OUT REFRIGERATION SYSTEM.
 - 2. BACK OF COUNTER / CABINET MUST BE VENTED PROPERLY FOR ADEQUATE AIRFLOW TO CONDENSER.
 - 3. **REPRESENTS REAR PULLOUT REFRIGERATION. AIR FLOW INTAKE AND EXIT DETAILS ARE REVERSED WITH FRONT PULLOUT REFRIGERATION OPTION.
 - 4. SELF-CONTAINED ACCESS ONLY BY PULLING OUT CONDENSER UNIT.
 - 5. 4" OPEN AREA CLEARANCE REQUIRED FOR AIR FLOW FRONT AND REAR OF CASE.



	"A"	"B"	"C"	"D"
NR3655RSSV	8 1/2"	16 7/8"	8 1/2"	10 1/2"
NR4855RSSV	8 1/2"	13 3/4"	8 1/2" x2	10 1/2"
NR6055RSSV	8 1/2"	19 1/2"	8 1/2" x2	10 1/2"
NR7255RSSV	8 1/2"	22 3/4"	8 1/2" x2	10 1/2"



NOTE: ALL DIMENSIONS APPROXIMATE

- ELECTRICAL JUNCTION BOX (SUPPLIED WITH 6" LEADS OR POWER CORD).
- REFRIGERATION LINE CONNECTION.
- SELF-CONTAINED CASE SERVICE ACCESS AREA.
- LOCATION OF DRAIN TUBE FOR REMOTE REF. ONLY (SUPPLIED WITH 3/4" OR 1 1/2" PVC TUBE).
- REMOTE FLOOR SINK & UTILITIES ACCESS AREA.
- DRY CASE SERVICE ACCESS AREA.