

Structural Concepts®

DELIVERING FRESH. ALWAYS.™



Boost Efficiency and Security

Specialized accessories that are designed to enhance efficiency and security paired with Structural Concepts' displays and merchandisers.

Security Covers

Security covers can be used as a deterrent against theft.

Select from four different types of security covers depending on the style of your merchandiser. Each of them requires a place to store the cover when not in use.



Acrylic Security Cover:

Acrylic security covers allow the products to be visible even when locked and use plastic locks to secure the cover.



Solid Security Cover:

Solid security covers have sheet metal outer skin, blue board cores, and aluminum inner skin.



Wire Security Cover:

Wire security covers allow the products to remain visible even when locked and use padlocks to secure the grid.



Roll-Down Security Cover:

Some models of the Oasis Family offer a roll-down security cover. This cover rolls up inside of the case header, so a place to store the cover is not required.

Night Curtains

Night curtains are offered for most self-service cases; they do not lock but do provide a low-level security deterrent.

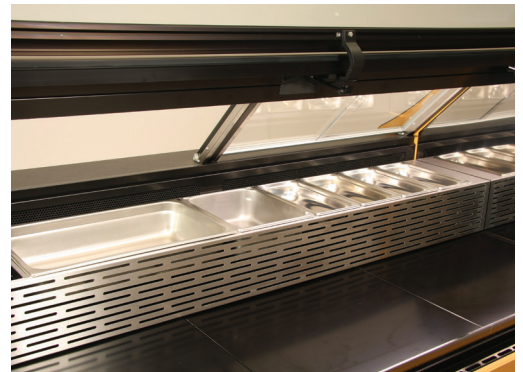
Both security covers and night curtains can help to save energy costs when used during times of non-use. Typically, a case has a security cover or a night curtain but not both.

Available in Blend, Fusion, Harmony, Oasis and Reveal models.



Condiment Rail System

The Condiment Rail System holds various pan sizes with a maximum pan depth of 4" and comes with adjustable condiment pan rails. One way to use this option is to display a variety of premade salads (iceberg, romaine, spinach, etc.) in front of the condiment rail and have vegetables, meats, eggs, cheeses, and dressings the customer can choose from staged in the condiment rail. **Available in Fusion models.**



Rear Wrapping Board

Rear wrapping boards provide a work area behind the case. This area can be used to cut, wrap, or stage products. Many wrapping boards flip down when more space is needed, and some are height adjustable. Wrapping boards can be removed from the case, tools free, for easy cleaning.

Available in Fusion, Harmony and Reveal models.



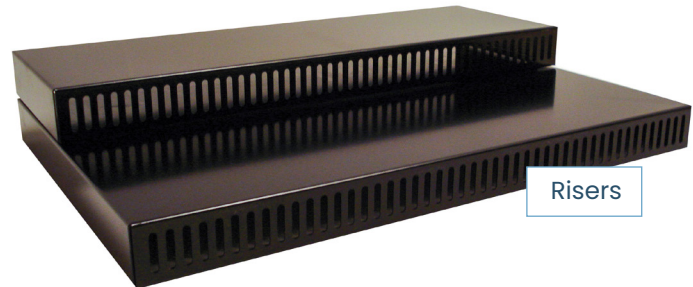
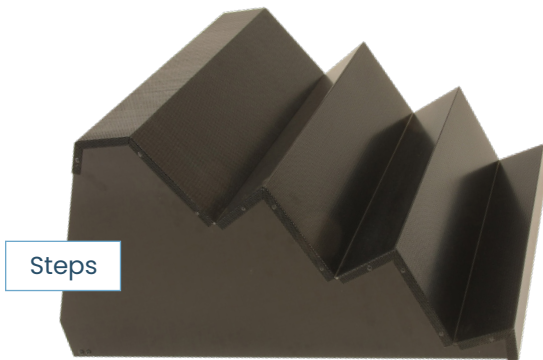


Display Steps & Risers

A one-piece Display Step accessory is offered to add vertical display space, maximizing the available area for showcasing products while providing storage behind. This can be useful when the product on display is whole and serving sizes are portions of the whole. For example, a whole ham and ham sandwich slices. Display Steps come in several heights, with horizontal and angled levels.

Display Risers are multi-piece platforms that are stackable to also create vertical display space. They can be used together or separately to create custom displays for any offering. Unlike Display Steps, Display Risers do not offer behind storage but do offer more display flexibility. Both Display Steps and Display Risers can be easily removed from the case and are easy to clean.

Available in Fusion, Harmony, Oasis and Reveal models.



Scale Stand

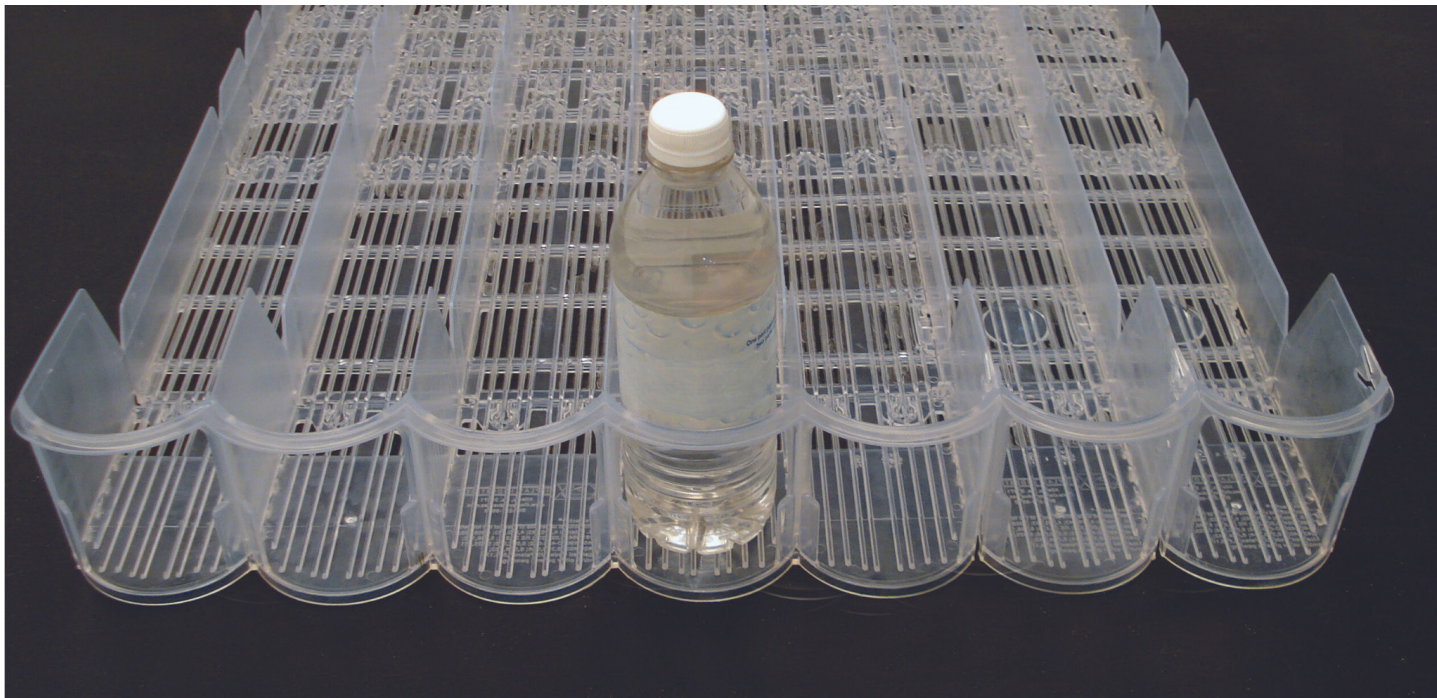
A scale stand is a dedicated place to house a scale. The scale stand comes standard with a receptacle to power the scale and an optional ethernet data port. Scale stands are available on Fusion and Reveal Family models. The Fusion scale stand is fixed and the Reveal scale stand pivots and nests in four locations. The receptacle on both scale stands requires its own circuit and does not pull from the case power. **Available in Fusion and Reveal models.**



Gravity Fed Bottle Slides

Bottle slides help keep the product in rows and are self-facing. Used on the Harmony collection of cases and paired with rear doors they become the perfect solution for first-in, first-out product stocking.

Available in Harmony models.



Price Tag Molding

The 1" price tag molding holds traditional tags in an extrusion attached to the front of each shelf. Price tags are supplied by others.

Available in Blend, Fusion, Harmony, Oasis and Reveal models.



Rear Door Locks

Rear door locks are traditionally paired with security covers to add another level to secure the product. Consider selecting both options together.

Available in Fusion, Harmony, Oasis and Reveal models.



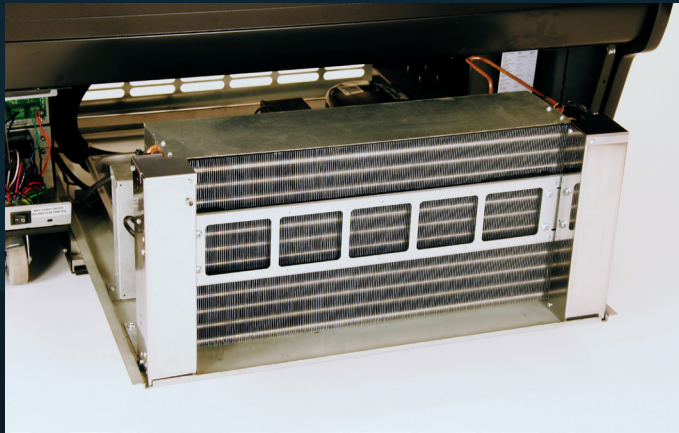
Seismic Levelers & Seismic Restraints

Seismic levelers and restraints are used to meet requirements in earthquake-prone areas. Check local codes to see which solution is required in your area. In addition to earthquake-sensitive areas, seismic restraints can be used to prevent a case from being moved or tipped over.

Available in Oasis and Reveal models.

Clean Sweep® Automatic Condenser Coil Cleaner

Clean Sweep® is our award-winning technology, that solves the problem of dirty, clogged condenser coils by using an electronically controlled brush mechanism that automatically cleans dust and debris from the condenser coil daily. The brush assembly cycles every 24 hours so dust doesn't collect and build up on the coil fins preventing a lack of airflow that would force the compressor to work harder and consume more energy to maintain the desired temperature. Clean Sweep® helps prevent costly breakdowns and expensive service calls.



To learn more about these products,
please scan the QR code.

Structural Concepts®
DELIVERING FRESH. ALWAYS.™