

- FSIB4R

50-7/8"L x 61-1/8"D x 53-7/8"H
- FSIB8R

98-1/8"L x 61-1/8"D x 53-7/8"H



FSIB4R

- Included**
- Remote DX refrigeration

• Digital fahrenheit thermometer

• One year parts & labor warranty

• Open reach-in front

• Removable deck pans provide complete access to evaporator coil & refrigeration connections

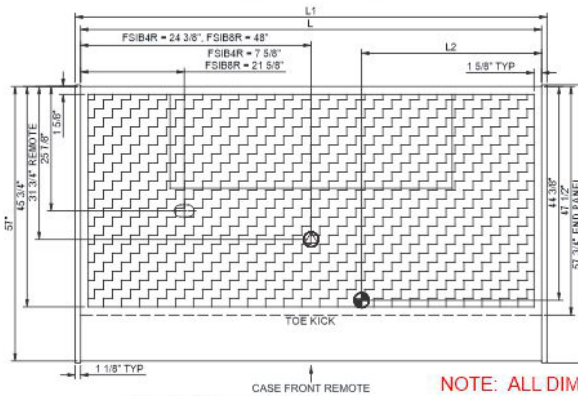
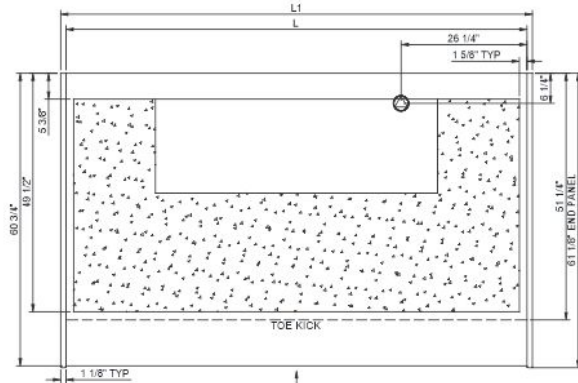
• Warmest average product temperature of 40°F or less

Specify	Standard Features	Additional Options
EXTERIOR COLOR	<div>• Laminate (stock colors)</div>	<div>• Laminate (non-stock colors)</div> <div>• Stainless steel</div>
INTERIOR COLOR	<div>• Powder coated Silversan Black</div>	<div>• Stainless steel</div>
LOWER FRONT PANEL COLOR	<div>• Powder coated SCC Standard Silversan Black (FDA compliant)</div>	<div>• Stainless steel</div>
BASE SUPPORT	<div>• Levelers</div>	
BUMPER END	<div>• None</div>	<div>• 1" Boston bumper (2 levels)</div> <div>• 1" Stainless steel tube bumper (2 levels)</div>
BUMPER FRONT	<div>• None</div>	<div>• 1" Boston bumper (2 levels)</div> <div>• 1" Stainless steel tube bumper (2 levels)</div>
END PANELS	<div>• Full w/stainless steel mirror interior</div>	<div>• Cutaway w/glass</div> <div>• None (specify per line-up)</div>
INTERIOR DISPLAY	<div>• Angled deck</div>	
ELECTRICAL CONNECTION	<div>• Electrical leads (remote)</div>	
REFRIGERATION	<div>• Remote DX refrigeration</div>	<div>• Note: Remote doesn't incl Conds unit. Floor drain reqd.</div>
SENSOR	<div>• None</div>	<div>• CPC discharge air sensor (remote)</div>
MISCELLANEOUS		<div>• Bumper front/ends</div>

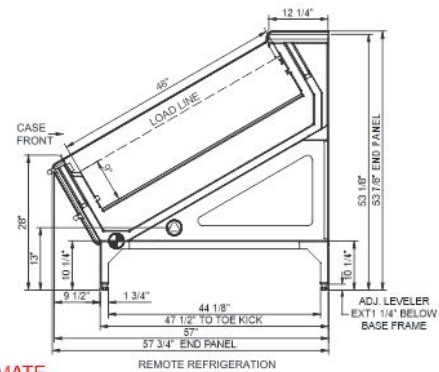
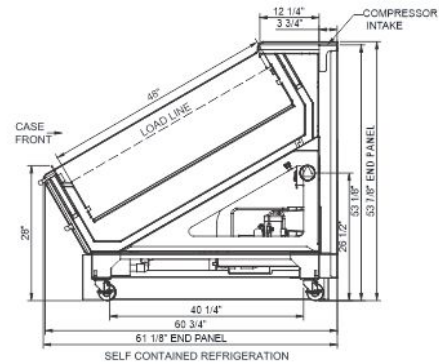
Intended Environment: Type I - Designed to operate in ambient conditions of 75°F with 55% relative humidity unless noted otherwise in system information below.

Zone	Intended Product To Be Displayed	Warmest Avg Prod Temp ° F
1	Packaged / unpackaged refrigerated products	40

PLAN VIEW



SIDE VIEW



- ELECTRICAL JUNCTION BOX**
(SUPPLIED WITH 6" LEADS OR POWER CORD).
- LOCATION OF DRAIN TUBE FOR REMOTE REF.**
ONLY (SUPPLIED WITH 3/4" OR 1 1/2" PVC TUBE).

- REFRIGERATION LINE CONNECTION.**
- REMOTE FLOOR SINK & UTILITIES**
ACCESS AREA.

- SELF-CONTAINED CASE SERVICE ACCESS AREA.**
- DRY CASE SERVICE ACCESS AREA.**

NOTE: ALL DIMENSIONS APPROXIMATE

Model Technical Specifications

Model Technical Specifications																
Model	L"	L1"	L2"	System Circuit Volts			Phs	Freq	Amps ***	Watts	Wires	NEMA Plug	SST	Conv. Rack BTUH	Para. Rack BTUH	Est Wt
FSIB4R	48.63	50.88	24.38	Remote (R404A)	Circuit #1	110-120	1	60	0.80	64	2+G	Leads Single	20.00	3110	2880	N/A
FSIB8R	95.88	98.13	37.50	Remote (R404A)	Circuit #1	110-120	1	60	1.60	128	2+G	Leads Single	20.00	8078	7480	N/A

*** Does not include electric defrost on freezer models.

Regulatory Approvals:

All Models
 Accordance with AHRI Std 1200
 ETL Listed to UL 471
 ETL Listed to CAN/CSA 22.2 No. 120
 ETL Sanitation to NSF/ANSI 7



In Accordance with
AHRI Std 1200

DOE 2017
Energy Efficiency
Compliant

Important Notes:

- 1) ELECTRICAL NOTE: If GFCI is required, a GFCI breaker MUST be used in lieu of a GFCI receptacle.
- 2) 60" Minimum door entry clearance required (Without shipping skid) for Remote unit & 64" for Self-Contained.
- 3) Remote units are supplied with levelers which must be adjusted during installation to ensure the unit is level and plumb.

⚠ WARNING: This product can expose you to chemicals, including Urethane (Ethyl Carbamate), which are known to the State of California to cause cancer and birth defects or other reproductive harm. For more information go to www.P65Warnings.ca.gov.