

# Technical Information

Oasis - Refrigerated Self-Service Counter Case

Structural Concepts®

DELIVERING FRESH. ALWAYS.™

## DIMENSIONS / SHIPPING

Model	L"	L1"	L2"	Est Wt (lbs)
CO3324R	34.000	36.250	2.375	N/A
CO4324R	45.000	47.250	3.125	N/A
CO5324R	57.000	59.250	3.125	N/A
CO6324R	69.000	71.250	3.125	N/A

## ELECTRICAL

Model	System Circuit Volts			Ph	Frq	Rated Load Amps	Min Cir Amps	Max OCP Amps	Watts	Wires	NEMA Plug	Amps Lights	Amps Fans	Amps Anti-Sweats	Amps Misc/Refrig/Heat
CO3324R	Remote (R404A)	Circuit #1	110-120	1	60	1.20	15	15	46	2+G	Leads Multiple	0.70	0.30	0.12	0.08
	Self-Contained (R513A)	Circuit #1	110-120	1	60	12.00	15	15	1,050	2+G	5-15P or L5-15P	0.70	1.00	4.08	7.40
CO4324R	Remote (DX)	Circuit #1	110-120	1	60	1.32	15	15	66	2+G	Leads Multiple	0.70	0.40	0.14	0.08
	Self-Contained (R513A)	Circuit #1	110-120	1	60	12.00	15	15	1,053	2+G	5-15P or L5-15P	0.70	1.00	4.10	7.40
CO5324R	Remote (DX)	Circuit #1	110-120	1	60	1.60	15	15	76	2+G	Leads Multiple	0.70	0.60	0.22	0.08
	Self-Contained (R513A)	Circuit #1	110-120	1	60	16.00	20	20	1,204	2+G	5-20P or L5-20P	0.70	1.20	4.18	11.00
CO6324R	Remote (DX)	Circuit #1	110-120	1	60	1.64	15	15	85	2+G	Leads Multiple	0.70	0.60	0.26	0.08
	Self-Contained (R513A)	Circuit #1	110-120	1	60	16.00	20	20	1,211	2+G	5-20P or L5-20P	0.70	1.20	4.22	11.00

## REFRIGERATION

Model	Zone	Section	System	Env't	REMOTE REFRIGERATION					GLYCOL / R744 REFRIGERATION			
					SST (°F)	Conv. Rack BTUH	Para. Rack BTUH	Defrost Interval (Hrs)	Defrost Duration	Total GPM	Pressure Drop (psi)	Concent (%)	Liquid Temp (°F)
CO3324R	All	Refrigerator	Remote-R404A	Type II	20	1,469	1,360	4.00	30.00	N/A	N/A	N/A	N/A
	All	Main	Self-Contained-R513A	Type II	N/A	N/A	N/A	N/A	N/A	N/A	N/A	N/A	N/A
CO4324R	All	Main	Remote-DX	Type II	20	1,944	1,800	4.00	25.00	N/A	N/A	N/A	N/A
	All	Main	Self-Contained-R513A	Type II	N/A	N/A	N/A	N/A	N/A	N/A	N/A	N/A	N/A
CO5324R	All	Refrigerator	Remote-DX	Type II	20	2,592	2,400	4.00	30.00	N/A	N/A	N/A	N/A
	All	Main	Self-Contained-R513A	Type II	N/A	N/A	N/A	N/A	N/A	N/A	N/A	N/A	N/A
CO6324R	All	Main	Remote-DX	Type II	20	2,938	2,720	4.00	25.00	N/A	N/A	N/A	N/A
	All	Main	Self-Contained-R513A	Type II	N/A	N/A	N/A	N/A	N/A	N/A	N/A	N/A	N/A

## INTENDED ENVIRONMENT

Type II - Designed to operate in ambient conditions of 80°F and 55% relative humidity unless noted otherwise under Env't above.

## WARMEST AVERAGE PRODUCT TEMP & INTENDED USE OF ZONES

Zone	Temp (°F)	Intended Use
1	40	Packaged refrigerated products

## IMPORTANT NOTES

- 1) ELECTRICAL NOTE: If GFCI is required, a GFCI breaker MUST be used in lieu of a GFCI receptacle
- 2) 33" Minimum entry door clearance required (w/out shipping skid)
- 3) Performance issues (product temperatures, water on floor, etc.) caused by adverse conditions are not covered by warranty.
- 4) Keep unit at least 15' from exterior doors, overhead HVAC vents, or any air curtain disruption.
- 5) Do not expose unit to direct sunlight or any heat source (ovens, fryers, etc.).
- 6) Compressor air rear intake, front discharge at toe kick. Front and rear panels cannot be blocked. Must remain 4" from wall.

## REGULATORY

All Models	<p>Accordance with AHRI Std 1200</p> <p>ETL Listed to UL 471</p> <p>ETL Listed to CAN/CSA 22.2 No. 120</p> <p>ETL Sanitation to NSF/ANSI 7</p>
------------	--



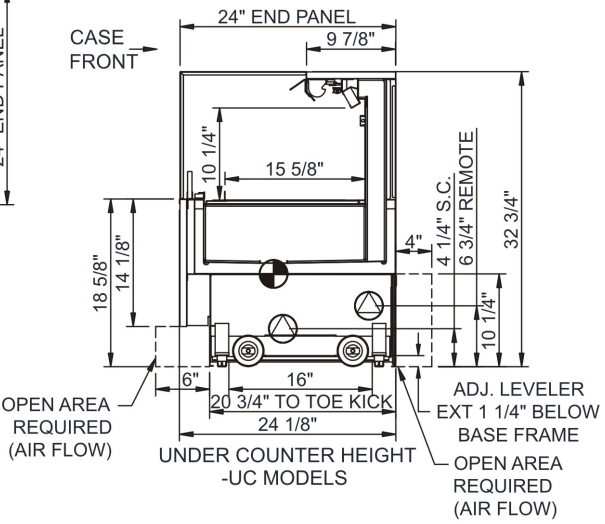
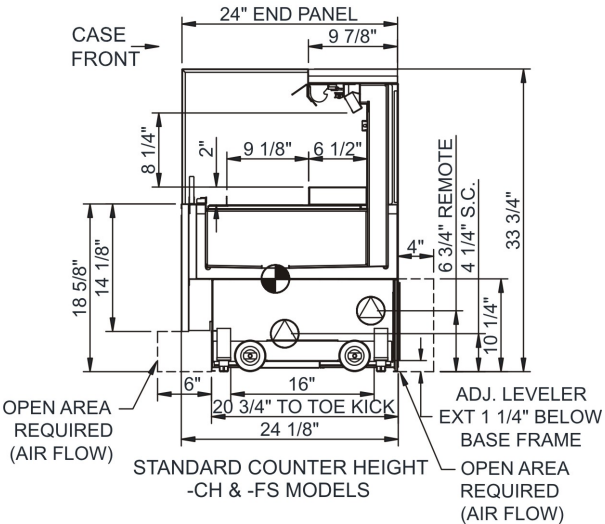
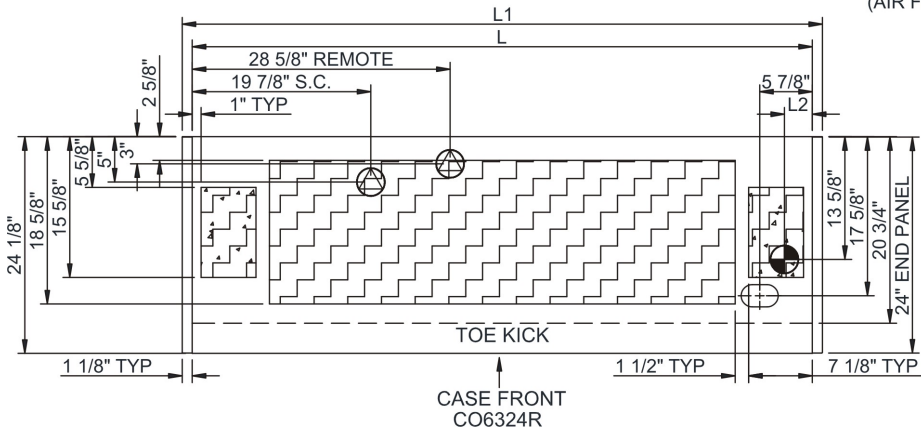
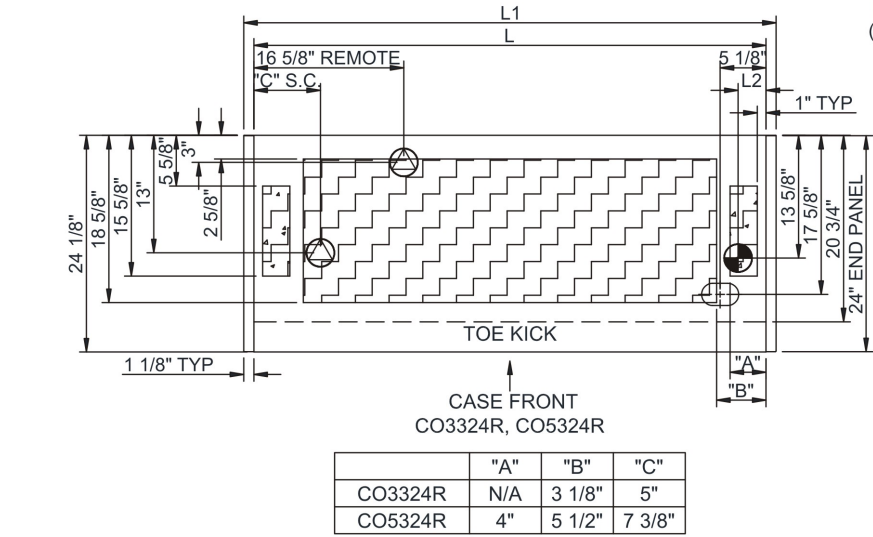
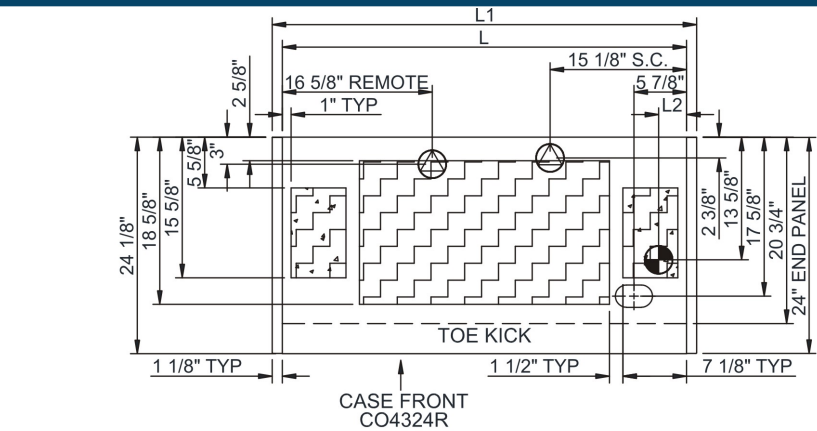
In Accordance with  
AHRI Std 1200

Technical Information

Oasis - Refrigerated Self-Service Counter Case

Structural Concepts®

DELIVERING FRESH. ALWAYS.™



NOTE: ALL DIMENSIONS APPROXIMATE

- ELECTRICAL JUNCTION BOX (SUPPLIED WITH 6" LEADS OR POWER CORD).
- LOCATION OF DRAIN TUBE FOR REMOTE REF. ONLY (SUPPLIED WITH 3/4" OR 1 1/2" PVC TUBE).
- REFRIGERATION LINE CONNECTION.
- REMOTE FLOOR SINK & UTILITIES ACCESS AREA.
- SELF-CONTAINED CASE SERVICE ACCESS AREA.
- DRY CASE SERVICE ACCESS AREA.