

Technical Information

Oasis - Refrigerated Self-Service Counter Case

Structural Concepts®

DELIVERING FRESH. ALWAYS.™

DIMENSIONS / SHIPPING

Model	L"	L1"	L2"	Est Wt (lbs)
CO33R	34.000	36.250	3.125	N/A
CO43R	45.000	47.250	3.125	N/A
CO53R	57.000	59.250	3.125	N/A
CO63R	69.000	71.250	34.500	N/A

ELECTRICAL

Model	System Circuit Volts			Ph	Frq	Rated Load Amps	Min Cir Amps	Max OCP Amps	Watts	Wires	NEMA Plug	Amps Lights	Amps Fans	Amps Anti-Sweats	Amps Misc/Refrig/Heat
CO33R	Remote (DX)-Type II Env	Circuit #1	110-120	1	60	1.12	15	15	42	2+G	Leads Multiple	0.70	0.30	0.12	N/A
	Remote (DX)-Type I Env	Circuit #1	110-120	1	60	1.12	15	15	36	2+G	Leads Multiple	0.70	0.30	0.12	N/A
CO43R	Remote (DX)-Type II Env	Circuit #1	110-120	1	60	1.14	15	15	40	2+G	Leads Multiple	0.70	0.30	0.14	N/A
	Remote (DX)-Type I Env	Circuit #1	110-120	1	60	1.14	15	15	40	2+G	Leads Multiple	0.70	0.30	0.14	N/A
	Remote (GLYCOL)-Type II Env	Circuit #1	110-120	1	60	1.14	15	15	36	2+G	Leads Multiple	0.70	0.30	0.14	N/A
	Remote (GLYCOL)-Type I Env	Circuit #1	110-120	1	60	1.14	15	15	36	2+G	Leads Multiple	0.70	0.30	0.14	N/A
CO53R	Remote (DX)-Type II Env	Circuit #1	110-120	1	60	1.22	15	15	52	2+G	Leads Multiple	0.70	0.30	0.22	N/A
	Remote (DX)-Type I Env	Circuit #1	110-120	1	60	1.22	15	15	52	2+G	Leads Multiple	0.70	0.30	0.22	N/A
	Remote (GLYCOL)-Type II Env	Circuit #1	110-120	1	60	1.22	15	15	47	2+G	Leads Multiple	0.70	0.30	0.22	N/A
	Remote (GLYCOL)-Type I Env	Circuit #1	110-120	1	60	1.22	15	15	47	2+G	Leads Multiple	0.70	0.30	0.22	N/A
	Remote (R744 T)-Type II Env	Circuit #1	110-120	1	60	1.22	15	15	52	2+G	Leads Multiple	0.70	0.30	0.22	N/A
	Remote (R744 T)-Type I Env	Circuit #1	110-120	1	60	1.22	15	15	52	2+G	Leads Multiple	0.70	0.30	0.22	N/A
CO63R	Remote (DX)-Type II Env	Circuit #1	110-120	1	60	1.56	15	15	75	2+G	Leads Multiple	0.70	0.60	0.26	N/A
	Remote (DX)-Type I Env	Circuit #1	110-120	1	60	1.56	15	15	75	2+G	Leads Multiple	0.70	0.60	0.26	N/A
	Remote (R744 T)-Type II Env	Circuit #1	110-120	1	60	1.56	15	15	75	2+G	Leads Multiple	0.70	0.60	0.26	N/A
	Remote (R744 T)-Type I Env	Circuit #1	110-120	1	60	1.56	15	15	75	2+G	Leads Multiple	0.70	0.60	0.26	N/A

REFRIGERATION

Model	Zone	Section	System	Envt	REMOTE REFRIGERATION					GLYCOL / R744 REFRIGERATION			
					SST (°F)	Conv. Rack BTUH	Para. Rack BTUH	Defrost Interval (Hrs)	Defrost Duration	Total GPM	Pressure Drop (psi)	Concent (%)	Liquid Temp (°F)
CO33R	All	Main	Remote-DX-Type II Env	Type II	20	1,706	1,580	4.00	25.00	N/A	N/A	N/A	N/A
	All	Main	Remote-DX-Type I Env	Type I	20	1,426	1,320	4.00	25.00	N/A	N/A	N/A	N/A
CO43R	All	Main	Remote-DX-Type II Env	Type II	20	1,922	1,780	4.00	25.00	N/A	N/A	N/A	N/A
	All	Main	Remote-DX-Type I Env	Type I	20	1,620	1,500	4.00	25.00	N/A	N/A	N/A	N/A
	All	Main	Remote-Glycol-Type II Env	Type II	N/A	1,922	1,780	4.00	25.00	0.60	4.50	35%	20.00
	All	Main	Remote-Glycol-Type I Env	Type I	N/A	1,620	1,500	4.00	25.00	0.40	2.70	35%	20.00
CO53R	All	Main	Remote-DX-Type II Env	Type II	20	2,419	2,240	4.00	25.00	N/A	N/A	N/A	N/A
	All	Main	Remote-DX-Type I Env	Type I	20	2,052	1,900	4.00	25.00	N/A	N/A	N/A	N/A
	All	Main	Remote-Glycol-Type II Env	Type II	N/A	2,419	2,240	4.00	25.00	0.50	1.00	35%	20.00
	All	Main	Remote-Glycol-Type I Env	Type I	N/A	2,052	1,900	4.00	25.00	0.35	0.75	35%	20.00
	All	Main	Remote-R744 TRANSCRITICAL-Type II Env	Type II	20	2,419	2,240	4.00	25.00	N/A	N/A	N/A	N/A
	All	Main	Remote-R744 TRANSCRITICAL-Type I Env	Type I	20	2,052	1,900	4.00	25.00	N/A	N/A	N/A	N/A
CO63R	All	Main	Remote-DX-Type II Env	Type II	20	2,981	2,760	4.00	25.00	N/A	N/A	N/A	N/A
	All	Main	Remote-DX-Type I Env	Type I	20	2,527	2,340	4.00	25.00	N/A	N/A	N/A	N/A
	All	Main	Remote-R744 TRANSCRITICAL-Type II Env	Type II	20	2,981	2,760	4.00	25.00	N/A	N/A	N/A	N/A
	All	Main	Remote-R744 TRANSCRITICAL-Type I Env	Type I	20	2,527	2,340	4.00	25.00	N/A	N/A	N/A	N/A

Technical Information

Oasis - Refrigerated Self-Service Counter Case

INTENDED ENVIRONMENT

Type II - Designed to operate in ambient conditions of 80°F and 55% relative humidity unless noted otherwise under Env't above.

WARMEST AVERAGE PRODUCT TEMP & INTENDED USE OF ZONES

Zone	Temp (°F)	Intended Use
1	40	Packaged refrigerated products

IMPORTANT NOTES

- 1) ELECTRICAL NOTE: If GFCI is required, a GFCI breaker MUST be used in lieu of a GFCI receptacle
- 2) 33" Minimum entry door clearance required (w/out shipping skid)
- 3) Performance issues (product temperatures, water on floor, etc.) caused by adverse conditions are not covered by warranty.
- 4) Keep unit at least 15' from exterior doors, overhead HVAC vents, or any air curtain disruption.
- 5) Do not expose unit to direct sunlight or any heat source (ovens, fryers, etc.).
- 6) Compressor air rear intake, front discharge at toe kick. Front and rear panels cannot be blocked. Must remain 4" from wall.

REGULATORY

All Models	Accordance with AHRI Std 1200 ETL Listed to UL 471 ETL Listed to CAN/CSA 22.2 No. 120 ETL Sanitation to NSF/ANSI 7
------------	---



In Accordance with

AHRI Std 1200

NOTE: ALL DIMENSIONS APPROXIMATE

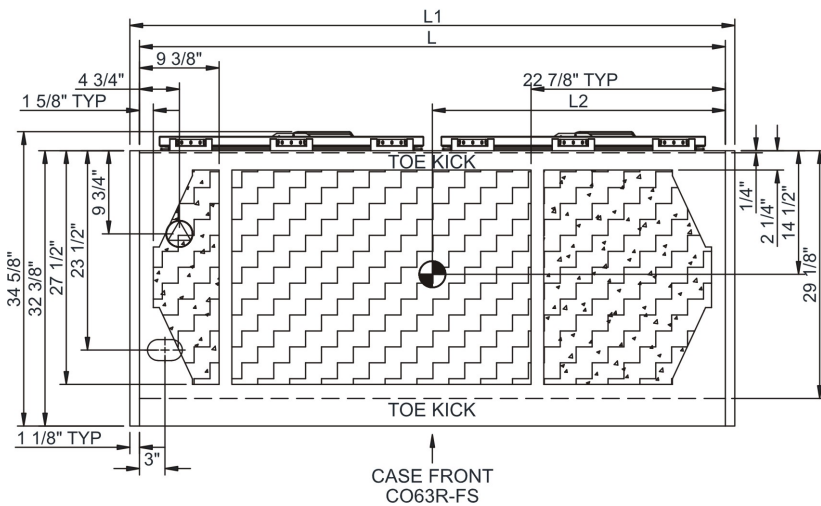
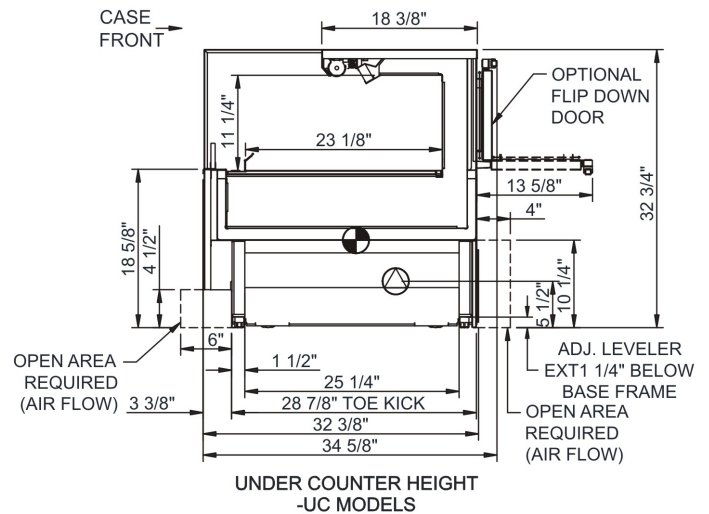
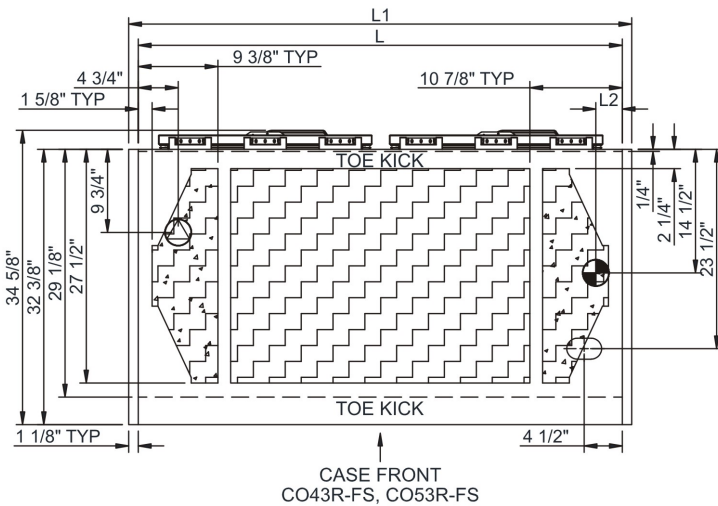
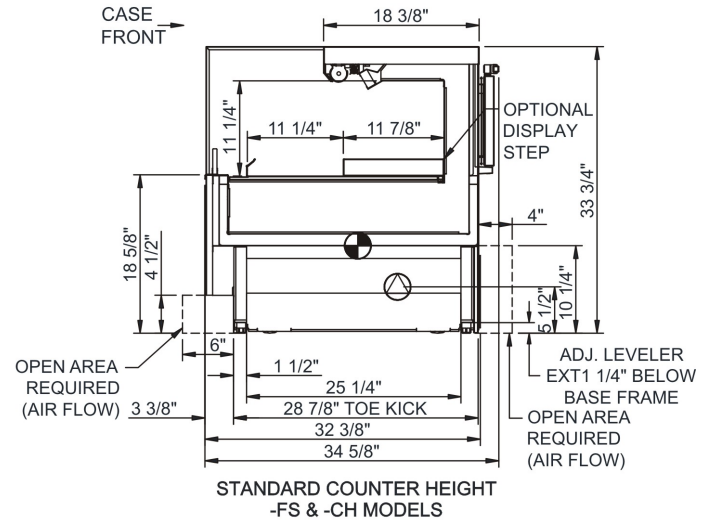
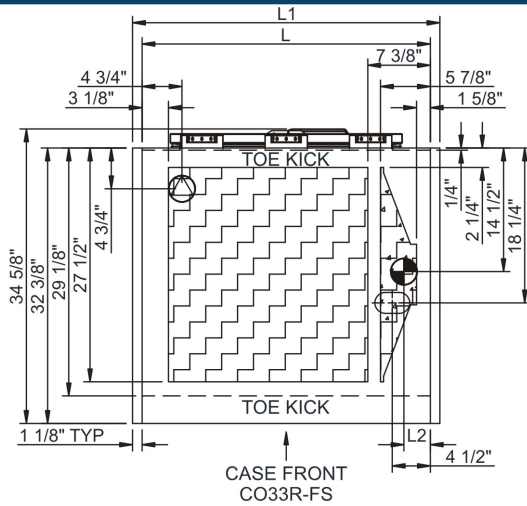
- ELECTRICAL JUNCTION BOX (SUPPLIED WITH 6" LEADS OR POWER CORD).
- REFRIGERATION LINE CONNECTION.
- SELF-CONTAINED CASE SERVICE ACCESS AREA.
- REMOTE FLOOR SINK & UTILITIES ACCESS AREA.
- DRY CASE SERVICE ACCESS AREA.
- LOCATION OF DRAIN TUBE FOR REMOTE REF. ONLY (SUPPLIED WITH 3/4" OR 1 1/2" PVC TUBE).

Technical Information

Oasis - Refrigerated Self-Service Counter Case

Structural Concepts®

DELIVERING FRESH. ALWAYS.™



NOTE: ALL DIMENSIONS APPROXIMATE

⊗ ELECTRICAL JUNCTION BOX (SUPPLIED WITH 6" LEADS OR POWER CORD).
 ⊙ LOCATION OF DRAIN TUBE FOR REMOTE REF. ONLY (SUPPLIED WITH 3/4" OR 1 1/2" PVC TUBE).

⊕ REFRIGERATION LINE CONNECTION.
 ⊞ REMOTE FLOOR SINK & UTILITIES ACCESS AREA.

▨ SELF-CONTAINED CASE SERVICE ACCESS AREA.
 ▩ DRY CASE SERVICE ACCESS AREA.