

- **CO33R** 36-1/4"L x 32-3/8"D x 33-3/4"H
- **CO43R** 47-1/4"L x 32-3/8"D x 33-3/4"H
- **CO53R** 59-1/4"L x 32-3/8"D x 33-3/4"H
- **CO63R** 71-1/4"L x 32-3/8"D x 33-3/4"H

Included

- NOTE: ADD SUFFIX TO MODEL # LISTED ABOVE BASED ON MODEL CONFIGURATION CHOSEN BELOW
- Remote DX refrigeration
- Blue Fin coated coil
- Casters (non-locking) w/ levelers
- LED 3500K top light(s)
- One piece formed ABS plastic tub
- One year parts & labor; 5 year compressor warranty
- Warmest average product temperature of 40°F or less

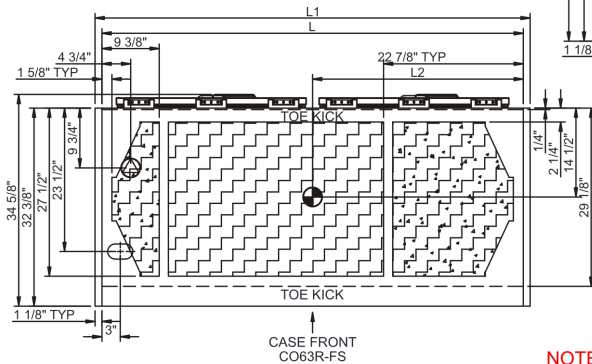
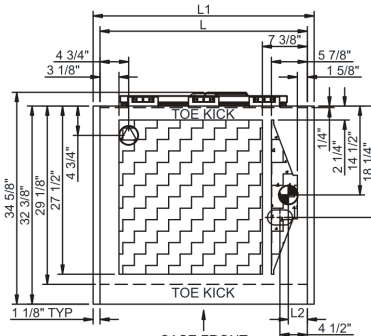
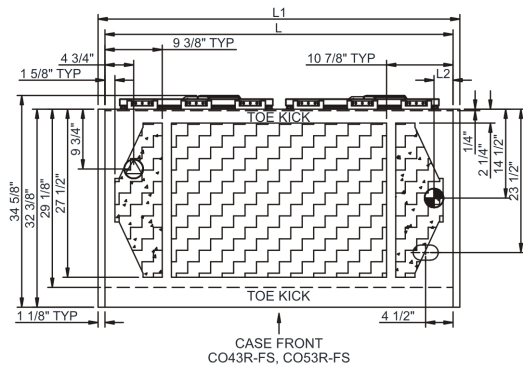


CO33R

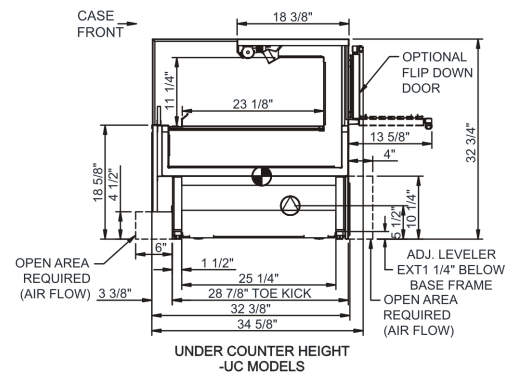
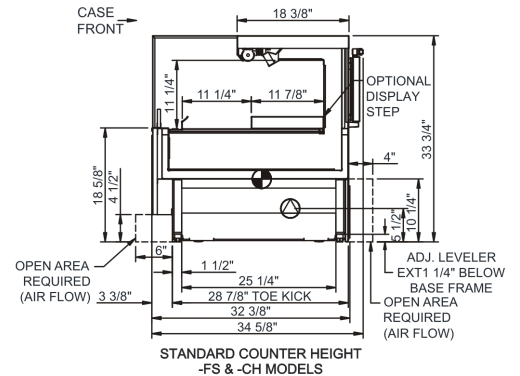
Specify	Standard Features	Additional Options
MODEL CONFIGURATION	<ul style="list-style-type: none"> Freestanding (-FS) Counter ht. 33-3/4"H; freestanding unit w/2 end panels. Top & front panels positioned between end panels 	<ul style="list-style-type: none"> Counter height (-CH) Counter ht. 33-3/4"H; Top & front panels extended over end panels to blend w/adj. counters (supplied by others) Undercounter height (-UC) Undercounter ht. 32-3/4"H; front panel extends over end panels to blend w/adj. counters (supplied by others). Counter surface (supplied by others) extends over top of unit
EXTERIOR COLOR	<ul style="list-style-type: none"> Laminate (stock colors) 	<ul style="list-style-type: none"> Laminate (non-stock colors) Stainless steel
INTERIOR COLOR	<ul style="list-style-type: none"> Powder coated Silversan Black 	<ul style="list-style-type: none"> Stainless steel
REAR EXTERIOR COLOR	<ul style="list-style-type: none"> Black 	<ul style="list-style-type: none"> Stainless steel
END PANELS	<ul style="list-style-type: none"> Full w/stainless steel mirror interior 	<ul style="list-style-type: none"> Curved w/stainless steel mirror interior (-FS model only) None (synchronized defrost required)
REAR DOORS	<ul style="list-style-type: none"> None (solid back panel) 	<ul style="list-style-type: none"> Solid rear flip-down door(s) w/ lock (rear access only)
ELECTRICAL CONNECTION	<ul style="list-style-type: none"> Electrical leads (remote) 	
REFRIGERATION	<ul style="list-style-type: none"> Remote w/thermostat, solenoid & TXV (rear access) 	<ul style="list-style-type: none"> Note: Remote doesn't incl Conds unit. Floor drain reqd. Remote w/thermostat, solenoid & TXV (front access)
MISCELLANEOUS		<ul style="list-style-type: none"> Second year parts & labor warranty
ACCESSORIES		<ul style="list-style-type: none"> 2"D Full chimney rear wall spacer (front access only) 2"H Full depth display riser(s) for lower display Night curtain, retractable, non-locking Removable solid security cover, locking

Intended Environment: Type II - Designed to operate in ambient conditions of 80°F and 55% relative humidity unless noted otherwise in system information below.		
Zone	Intended Product To Be Displayed	Warmest Avg Prod Temp ° F
1	Packaged refrigerated products	40



PLAN VIEW



SIDE VIEW



NOTE: ALL DIMENSIONS APPROXIMATE

-  **ELECTRICAL JUNCTION BOX**
(SUPPLIED WITH 6" LEADS OR POWER CORD).
-  **LOCATION OF DRAIN TUBE FOR REMOTE REF.**
ONLY (SUPPLIED WITH 3/4" OR 1 1/2" PVC TUBE).

-  REFRIGERATION LINE CONNECTION.
- REMOTE FLOOR SINK & UTILITIES ACCESS AREA.

- SELF-CONTAINED CASE SERVICE ACCESS AREA.
- DRY CASE SERVICE ACCESS AREA.

Model Technical Specifications																
Model	L"	L1"	L2"	System Circuit Volts			Phs	Freq	Amps ***	Watts	Wires	NEMA Plug	SST	Conv. Rack RTI/H	Para. Rack RTI/H	Est Wt
CO33R	34.00	36.25	3.13	Remote (DX)	Circuit #1	110-120	1	60	1.12	42	2+G	Leads Multiple	20.00	1706	1580	650
CO43R	45.00	47.25	3.13	Remote (DX)	Circuit #1	110-120	1	60	1.14	40	2+G	Leads Multiple	20.00	1922	1780	700
				Remote (GLYCOL 35%)	Circuit #1	110-120	1	60	1.14	36	2+G	Leads Multiple	20.00	1922	1780	
CO53R	57.00	59.25	3.13	Remote (DX)	Circuit #1	110-120	1	60	1.22	52	2+G	Leads Multiple	20.00	2419	2240	750
				Remote (GLYCOL 35%)	Circuit #1	110-120	1	60	1.22	47	2+G	Leads Multiple	20.00	2419	2240	
				Remote (R744 TRANSCRIT	Circuit #1	110-120	1	60	1.22	52	2+G	Leads Multiple		2419	2240	
CO63R	69.00	71.25	34.50	Remote (DX)	Circuit #1	110-120	1	60	1.56	75	2+G	Leads Multiple	20.00	2981	2760	850
				Remote (R744 TRANSCRIT	Circuit #1	110-120	1	60	1.56	75	2+G	Leads Multiple		2981	2760	

*** Does not include electric defrost on freezer models.

Regulatory Approvals:

All Models	<p>Accordance with AHRI Std 1200</p> <p>ETL Listed to UL 471</p> <p>ETL Listed to CAN/CSA 22.2 No. 120</p> <p>ETL Sanitation to NSF/ANSI 7</p>
------------	--



In Accordance with
AHRI Std 1200



Important Notes:

- 1) ELECTRICAL NOTE: If GFCI is required, a GFCI breaker MUST be used in lieu of a GFCI receptacle
- 2) 33" Minimum entry door clearance required (w/out shipping skid)
- 3) Performance issues (product temperatures, water on floor, etc.) caused by adverse conditions are not covered by warranty.
- 4) Keep unit at least 15' from exterior doors, overhead HVAC vents, or any air curtain disruption.
- 5) Do not expose unit to direct sunlight or any heat source (ovens, fryers, etc.).
- 6) Compressor air rear intake, front discharge at toe kick. Front and rear panels cannot be blocked. Must remain 4" from wall.

⚠ WARNING: This product can expose you to chemicals, including Urethane (Ethyl Carbamate), which are known to the State of California to cause cancer and birth defects or other reproductive harm. For more information go to www.P65Warnings.ca.gov.