

Technical Information

Oasis - Refrigerated Self-Service Case

Structural Concepts®

DELIVERING FRESH. ALWAYS.™

DIMENSIONS / SHIPPING

Model	L"	L1"	L2"	Est Wt (lbs)
CO35R	34.000	36.250	3.125	N/A
CO45R	45.000	47.250	3.125	N/A
CO55R	57.000	59.250	3.125	N/A
CO65R	69.000	71.250	3.125	N/A

ELECTRICAL

Model	System Circuit Volts				Ph	Frq	Rated Load Amps	Min Cir Amps	Max OCP Amps	Watts	Wires	NEMA Plug	Amps Lights	Amps Fans	Amps Anti-Sweats	Amps Misc/Refrig/Heat
CO35R	Remote (DX)	Circuit #1	110-120	1	60	1.15	15	15	15	55	2+G	Leads Multiple	0.70	0.31	0.14	N/A
	Remote (DX)	Circuit #1	110-120	1	60	1.15	15	15	15	55	2+G	Leads Multiple	0.70	0.31	0.14	N/A
CO45R	Remote (DX)	Circuit #1	110-120	1	60	1.20	15	15	15	106	2+G	Leads Multiple	0.76	0.30	0.14	N/A
	Remote (DX)	Circuit #1	110-120	1	60	1.20	15	15	15	56	2+G	Leads Multiple	0.76	0.30	0.14	N/A
CO55R	Remote (DX)	Circuit #1	110-120	1	60	1.51	15	15	136	136	2+G	Leads Multiple	0.99	0.30	0.22	N/A
	Remote (DX)	Circuit #1	110-120	1	60	1.51	15	15	136	136	2+G	Leads Multiple	0.99	0.30	0.22	N/A
CO65R	Remote (DX)	Circuit #1	110-120	1	60	1.27	15	15	89	89	2+G	Leads Multiple	0.70	0.31	0.26	N/A
	Remote (DX)	Circuit #1	110-120	1	60	1.27	15	15	89	89	2+G	Leads Multiple	0.70	0.31	0.26	N/A

REFRIGERATION

Model	Zone	Section	System	Env't	REMOTE REFRIGERATION					GLYCOL / R744 REFRIGERATION			
					SST (°F)	Conv. Rack BTUH	Para. Rack BTUH	Defrost Interval (Hrs)	Defrost Duration	Total GPM	Pressure Drop (psi)	Concent (%)	Liquid Temp (°F)
CO35R	All	Main	Remote-DX	Type I	20	2,700	2,500	4.00	30.00	N/A	N/A	N/A	N/A
	All	Main	Remote-DX	Type II	20	3,283	3,040	4.00	30.00	N/A	N/A	N/A	N/A
CO45R	All	Main	Remote-DX	Type I	20	3,499	3,240	4.00	30.00	N/A	N/A	N/A	N/A
	All	Main	Remote-DX	Type II	20	4,277	3,960	4.00	30.00	N/A	N/A	N/A	N/A
CO55R	All	Main	Remote-DX	Type I	20	4,363	4,040	4.00	25.00	N/A	N/A	N/A	N/A
	All	Main	Remote-DX	Type II	20	5,335	4,940	4.00	25.00	N/A	N/A	N/A	N/A
CO65R	All	Main	Remote-DX	Type I	20	5,162	4,780	4.00	30.00	N/A	N/A	N/A	N/A
	All	Main	Remote-DX	Type II	20	6,329	5,860	4.00	30.00	N/A	N/A	N/A	N/A

INTENDED ENVIRONMENT

Type II - Designed to operate in ambient conditions of 80°F and 55% relative humidity unless noted otherwise under Env't above.

WARMEST AVERAGE PRODUCT TEMP & INTENDED USE OF ZONES

Zone	Temp (°F)	Intended Use
1	40	Packaged refrigerated products

IMPORTANT NOTES

- 1) ELECTRICAL NOTE: If GFCI is required, a GFCI breaker MUST be used in lieu of a GFCI receptacle
- 2) Performance issues (product temperatures, water on floor, etc.) caused by adverse conditions are not covered by warranty.
- 3) Keep unit at least 15' from exterior doors, overhead HVAC vents, or any air curtain disruption.
- 4) End panels must be tightly joined or kept at least 6" away from any structure to prevent condensation.
- 5) Do not expose unit to direct sunlight or any heat source (ovens, fryers, etc.).
- 6) Keep at least 8" of clearance above unit for air discharge (self-contained only).
- 7) Tile floors, low ceilings, or small rooms will increase noise level. Remote refrigeration recommended.
- 8) Compressor air front intake, rear discharge. Front panel cannot be blocked. Must remain 4" from wall.

REGULATORY

All Models	Accordance with AHRI Std 1200 ETL Listed to UL 471 ETL Listed to CAN/CSA 22.2 No. 120 ETL Sanitation to NSF/ANSI 7
------------	---



In Accordance with
AHRI Std 1200

Technical Information

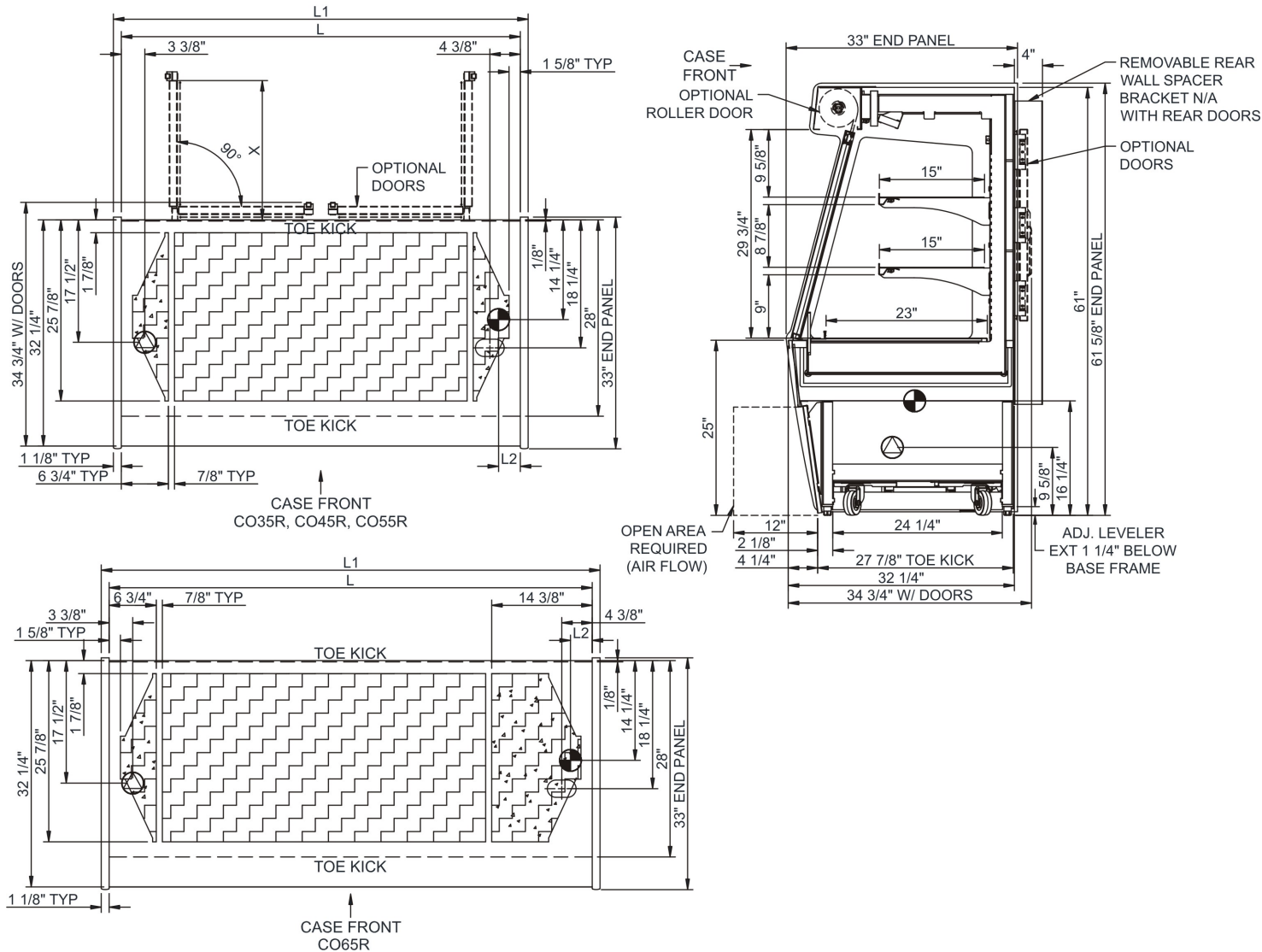
Oasis - Refrigerated Self-Service Case

Structural Concepts®

DELIVERING FRESH. ALWAYS.™

5' H MODEL

NOTE: CO35R - (X) = 30 1/8" - (1) DOOR LH HINGED
CO45R - (X) = 19 3/4" - (2) DOORS RH & LH HINGED
CO55R - (X) = 19 3/4" - (2) DOORS RH & LH HINGED
CO65R - (X) = 30 1/8" - (2) DOORS RH & LH HINGED



NOTE: ALL DIMENSIONS APPROXIMATE

- ELECTRICAL JUNCTION BOX (SUPPLIED WITH 6" LEADS OR POWER CORD).
- REFRIGERATION LINE CONNECTION.
- SELF-CONTAINED CASE SERVICE ACCESS AREA.
- LOCATION OF DRAIN TUBE FOR REMOTE REF. ONLY (SUPPLIED WITH 3/4" OR 1 1/2" PVC TUBE).
- REMOTE FLOOR SINK & UTILITIES ACCESS AREA.
- DRY CASE SERVICE ACCESS AREA.