

- **CO35R** 36-1/4"L x 33"D x 61-5/8"H
- **CO45R** 47-1/4"L x 33"D x 61-5/8"H
- **CO55R** 59-1/4"L x 33"D x 61-5/8"H
- **CO65R** 71-1/4"L x 33"D x 61-5/8"H

Included

- Remote DX refrigeration
- 4"D removable rear wall spacer (not included in depth dimension)
- Blue Fin coated coil
- LED 3500K top light(s)
- One piece formed ABS plastic tub
- One year parts & labor warranty
- Removable deck pans provide complete access to evaporator coil & refrigeration connections
- Shelving removable and adjustable on 1" centers
- Warmest average product temperature of 40°F or less



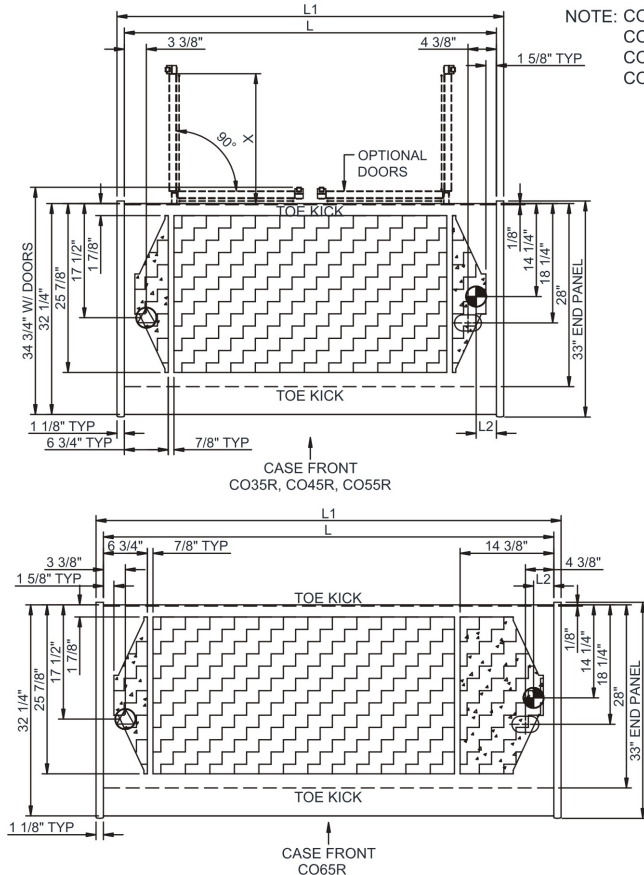
CO45R

Specify	Standard Features	Additional Options
EXTERIOR COLOR	• Laminate (stock colors)	• Laminate (non-stock colors) • Stainless steel
INTERIOR COLOR	• Powder coated Silversan Black	• Stainless steel
LOWER FRONT PANEL COLOR	• Powder coated Silversan Black	• Stainless steel (must choose stainless exterior)
REAR EXTERIOR COLOR	• Black	• Stainless steel
BASE SUPPORT	• Levelers (remote)	• Seismic levelers
END PANELS	• Full w/stainless steel mirror interior	• Cutaway w/glass • None (synchronized defrost required)
REAR DOORS	• None (solid back panel)	• Rear loading hinged doors, locking
SHELVING	• Metal shelves (2), non-lighted	• Metal shelves (2), lighted (LED 3500K)
ELECTRICAL CONNECTION	• Electrical leads (remote)	
REFRIGERATION	• Remote w/thermostat, solenoid & TXV	• Note: Remote doesn't incl Conds unit. Floor drain reqd.
MISCELLANEOUS		• Case height wall spacer bracket (specify BL or SS) • Roll-down security cover, locking (Requires two end panels (full or cutaway) per case) • Second year parts & labor warranty
ACCESSORIES		• Night curtain, retractable, non-locking • Price tag molding (matches interior color) • Removable solid security cover, locking

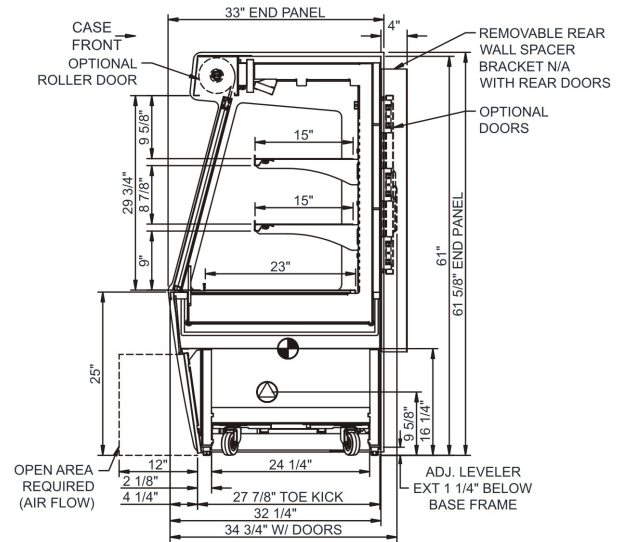
Intended Environment: Type II - Designed to operate in ambient conditions of 80°F and 55% relative humidity unless noted otherwise in system information below.

Zone	Intended Product To Be Displayed	Warmest Avg Prod Temp ° F
1	Packaged refrigerated products	40

PLAN VIEW



SIDE VIEW



NOTE: ALL DIMENSIONS APPROXIMATE

- ELECTRICAL JUNCTION BOX (SUPPLIED WITH 6\"/>

Model Technical Specifications																
Model	L"	L1"	L2"	System Circuit Volts			Phs	Freq	Amps ***	Watts	Wires	NEMA Plug	SST	Conv. Rack BTU/H	Para. Rack BTU/H	Est Wt
CO35R	34.00	36.25	3.13	Remote (DX)	Circuit #1	110-120	1	60	1.15	55	2+G	Leads Multiple	20.00	3283	3040	750
CO45R	45.00	47.25	3.13	Remote (DX)	Circuit #1	110-120	1	60	1.20	56	2+G	Leads Multiple	20.00	4277	3960	800
CO55R	57.00	59.25	3.13	Remote (DX)	Circuit #1	110-120	1	60	1.51	136	2+G	Leads Multiple	20.00	5335	4940	950
CO65R	69.00	71.25	3.13	Remote (DX)	Circuit #1	110-120	1	60	1.27	89	2+G	Leads Multiple	20.00	6329	5860	1,100

*** Does not include electric defrost on freezer models.

Regulatory Approvals:

All Models
 Accordance with AHRI Std 1200
 ETL Listed to UL 471
 ETL Listed to CAN/CSA 22.2 No. 120
 ETL Sanitation to NSF/ANSI 7



In Accordance with
AHRI Std 1200

DOE 2017
 Energy Efficiency
 Compliant

Important Notes:

- 1) ELECTRICAL NOTE: If GFCI is required, a GFCI breaker MUST be used in lieu of a GFCI receptacle
- 2) Performance issues (product temperatures, water on floor, etc.) caused by adverse conditions are not covered by warranty.
- 3) Keep unit at least 15' from exterior doors, overhead HVAC vents, or any air curtain disruption.
- 4) End panels must be tightly joined or kept at least 6" away from any structure to prevent condensation.
- 5) Do not expose unit to direct sunlight or any heat source (ovens, fryers, etc.).
- 6) Keep at least 8" of clearance above unit for air discharge (self-contained only).
- 7) Tile floors, low ceilings, or small rooms will increase noise level. Remote refrigeration recommended.
- 8) Compressor air front intake, rear discharge. Front panel cannot be blocked. Must remain 4" from wall.

⚠ WARNING: This product can expose you to chemicals, including Urethane (Ethyl Carbamate), which are known to the State of California to cause cancer and birth defects or other reproductive harm. For more information go to www.P65Warnings.ca.gov.