

• COU2757R 27-1/2"L x 34-3/4"D x 57-3/4"H

- Included**
- Breeze self-contained refrigeration
 - Angled deck (n/a w/display steps)
 - Casters
 - Clear glass shelves, lighted (LED 3500K)
 - Condensate pan (self-contained refig. only)
 - Curved single pane, fixed front glass
 - Full end panel w/mirror interior
 - LED 3500K top & shelf lights
 - One year parts & labor; 5 year compressor warranty
 - Warmest average product temperature of 40°F or less



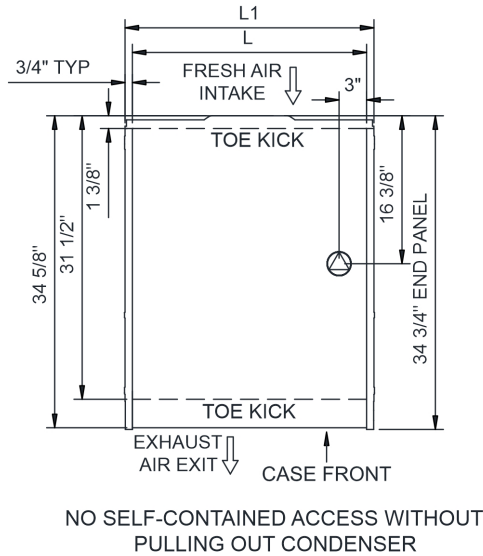
COU2757R

Specify	Standard Features	Additional Options
EXTERIOR COLOR	<ul style="list-style-type: none">• Laminate (stock colors)	<ul style="list-style-type: none">• Laminate (non-stock colors)• Stainless steel
INTERIOR COLOR	<ul style="list-style-type: none">• Powder coated Silversan Black	<ul style="list-style-type: none">• Stainless steel
REAR DOORS	<ul style="list-style-type: none">• Clear glass rear sliding doors w/o lock	<ul style="list-style-type: none">• Reflective glass rear sliding doors w/o lock
ELECTRICAL CONNECTION	<ul style="list-style-type: none">• 6' Straight blade power cord (self-cont.)	<ul style="list-style-type: none">• 6' Locking power cord (self-cont.)
MISCELLANEOUS		<ul style="list-style-type: none">• Rear door lock• Second year parts & labor warranty (excludes compressor)
ACCESSORIES		<ul style="list-style-type: none">• 2"H Display steps• Night curtain, retractable, non-locking• Removable wire security cover, locking

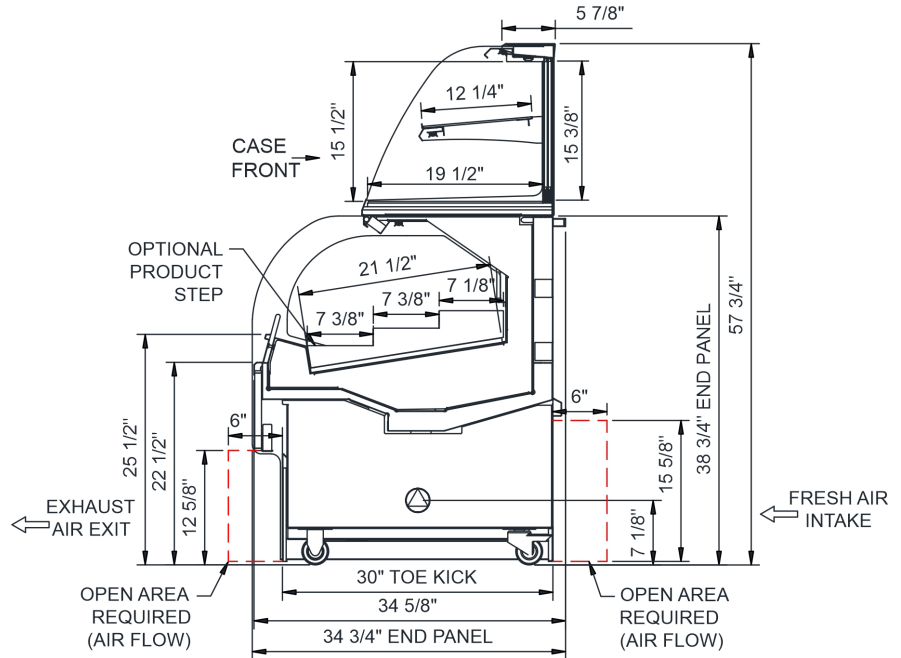
Intended Environment: Type I - Designed to operate in ambient conditions of 75°F with 55% relative humidity unless noted otherwise in system information below.

Zone	Intended Product To Be Displayed	Warmest Avg Prod Temp ° F
1	Packaged refrigerated products	40
2	Packaged non-refrigerated products	Ambient

PLAN VIEW



SIDE VIEW



NOTE: ALL DIMENSIONS APPROXIMATE

⊗ ELECTRICAL JUNCTION BOX (SUPPLIED WITH 6" LEADS OR POWER CORD).
 ⊙ LOCATION OF DRAIN TUBE FOR REMOTE REF. ONLY (SUPPLIED WITH 3/4" OR 1 1/2" PVC TUBE).

⊕ REFRIGERATION LINE CONNECTION.
 ☐ REMOTE FLOOR SINK & UTILITIES ACCESS AREA.

⊞ SELF-CONTAINED CASE SERVICE ACCESS AREA.
 ⊞ DRY CASE SERVICE ACCESS AREA.

Model Technical Specifications																
Model	L"	L1"	L2"	System Circuit Volts			Phs	Freq	Amps ***	Watts	Wires	NEMA Plug	SST	Conv. Rack BTU/H	Para. Rack BTU/H	Est Wt
COU2757R	26.00	27.50	.00	Self-Contained (R290)	Circuit #1	110-120	1	60	10.43	965	2+G	5-15P or L5-15P	N/A	N/A	N/A	800

*** Does not include electric defrost on freezer models.

Regulatory Approvals:

All Models
 Accordance with AHRI Std 1200
 ETL Listed to UL 471
 ETL Listed to CAN/CSA 22.2 No. 120
 ETL Sanitation to NSF/ANSI 7



In Accordance with
AHRI Std 1200

DOE 2017
 Energy Efficiency
 Compliant

Important Notes:

- 1) ELECTRICAL NOTE: If GFCI is required, a GFCI breaker MUST be used in lieu of a GFCI receptacle
- 2) 35 1/2" Minimum door entry clearance required (Without shipping skid).
- 3) Compressor air intake from rear and out front panel at toe kick. Front panel cannot be blocked. Product must be cooled before being displayed within the case.

⚠ WARNING: This product can expose you to chemicals, including Urethane (Ethyl Carbamate), which are known to the State of California to cause cancer and birth defects or other reproductive harm. For more information go to www.P65Warnings.ca.gov.