

- FSC463R
 - FSC663R
- 47"L x 49-1/2"D x 63-3/8"H

75-5/8"L x 49-1/2"D x 63-3/8"H



FSC463R

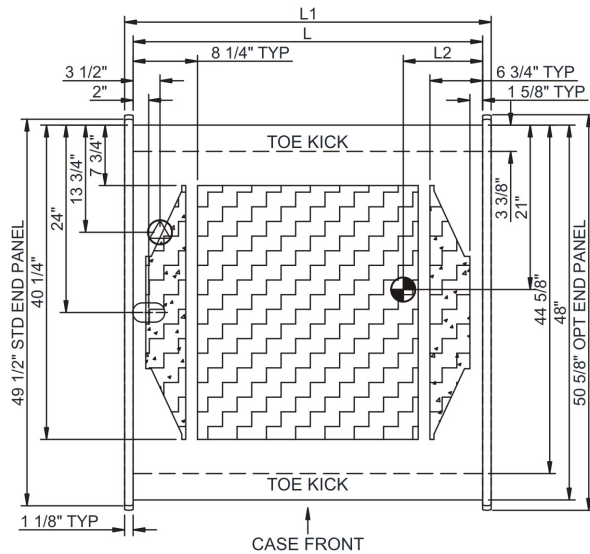
Included

- Remote DX refrigeration
- Blue Fin coated coil
- Casters w/ levelers
- Electrical leads
- LED 3500K top light(s)
- NOTE: Electrical specs reflect highest Amp draw using lighted shelves option
- Price tag molding (matches interior color)
- Removable deck pans provide complete access to evaporator coil & refrigeration connections

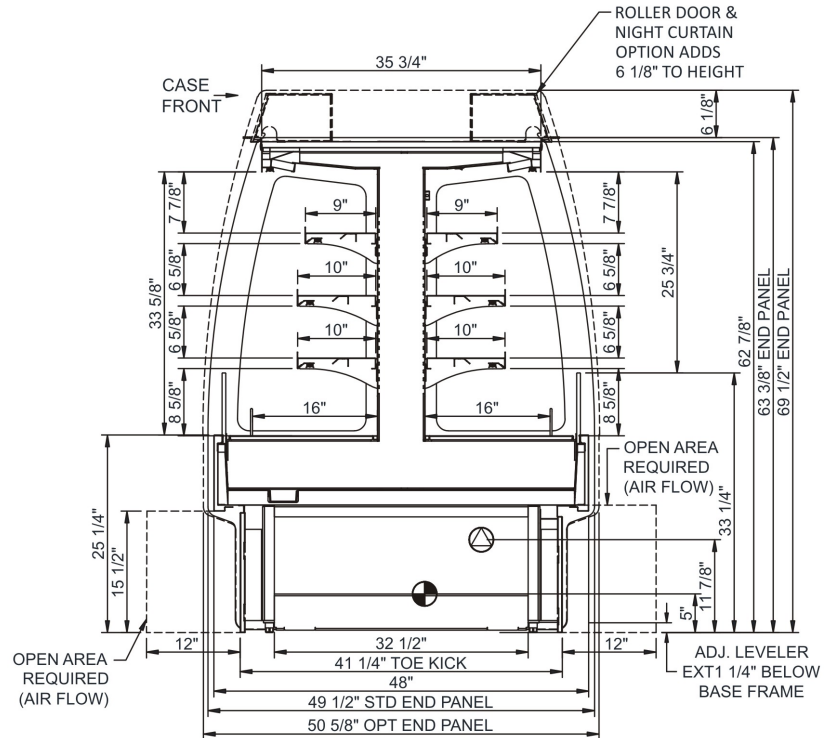
Specify	Standard Features	Additional Options
EXTERIOR COLOR	<ul style="list-style-type: none">• Laminate (stock colors)	<ul style="list-style-type: none">• Laminate (non-stock colors)• Stainless steel
INTERIOR COLOR	<ul style="list-style-type: none">• Powder coated Silversan Black	<ul style="list-style-type: none">• Stainless steel
LOWER FRONT PANEL COLOR	<ul style="list-style-type: none">• Powder coated Silversan Black	<ul style="list-style-type: none">• Stainless steel (must choose stainless exterior)
END PANELS	<ul style="list-style-type: none">• Full w/stainless steel mirror interior	<ul style="list-style-type: none">• Cutaway w/glass
SHELVING	<ul style="list-style-type: none">• Non-adjustable metal shelves, non-lighted	<ul style="list-style-type: none">• Non-adjustable metal shelves, lighted (LED 3500K)
ELECTRICAL CONNECTION	<ul style="list-style-type: none">• Electrical leads (remote)	
REFRIGERATION	<ul style="list-style-type: none">• Remote DX refrigeration	
MISCELLANEOUS		<ul style="list-style-type: none">• (2) Roll-down security cover, locking (inc. ht. to 69-1/2")• Second year parts & labor warranty
ACCESSORIES		<ul style="list-style-type: none">• (2) Night curtain, retractable, non-locking (inc. ht. to 69-1/2")• (2) Removable solid security cover, locking

Intended Environment: Type II - Designed to operate in ambient conditions of 80°F and 55% relative humidity unless noted otherwise in system information below.		
Zone	Intended Product To Be Displayed	Warmest Avg Prod Temp ° F
1	Packaged refrigerated products	40

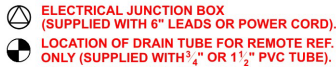
PLAN VIEW



SIDE VIEW



NOTE: ALL DIMENSIONS APPROXIMATE



Model Technical Specifications																
Model	L"	L1"	L2"	System Circuit Volts			Phs	Freq	Amps ***	Watts	Wires	NEMA Plug	SST	Conv. Rack RTI/H	Para. Rack RTI/H	Est Wt
FSC463R	44.75	47.00	13.88	Remote (DX)	Circuit #1	110-120	1	60	2.96	180	2+G	Leads Single	20.00	7690	7120	1,300
FSC663R	73.38	75.63	13.88	Remote (R404A)	Circuit #1	110-120	1	60	3.46	250	2+G	Leads Single	20.00	10800	10000	1,900

*** Does not include electric defrost on freezer models.

Regulatory Approvals:

All Models	<p>Accordance with AHRI Std 1200</p> <p>ETL Listed to UL 471</p> <p>ETL Listed to CAN/CSA 22.2 No. 1200</p> <p>ETL Sanitation to NSF/ANSI 7</p>
------------	---



In Accordance with
AHRI Std 1200



Important Notes:

- 1) ELECTRICAL NOTE: If GFCI is required, a GFCI breaker MUST be used in lieu of a GFCI receptacle
- 2) Electrical specs reflect highest Amp draw using lighted shelves option .
- 3) Compressor air intake in one side & out other side. All louvered panels cannot be blocked.

⚠️ WARNING: This product can expose you to chemicals, including Urethane (Ethyl Carbamate), which are known to the State of California to cause cancer and birth defects or other reproductive harm. For more information go to www.P65Warnings.ca.gov.