

Technical Information

Grocerant - Heated Self-Service Food Bar 43"D

Structural Concepts®

DELIVERING FRESH. ALWAYS.™

DIMENSIONS / SHIPPING				
Model	L"	L1"	L2"	Est Wt (lbs)
FB8SS-6H	N/A	95.000	12.250	N/A
FB10SS-8H	N/A	125.000	12.250	N/A

ELECTRICAL															
Model	System Circuit Volts			Ph	Frq	Rated Load Amps	Min Cir Amps	Max OCP Amps	Watts	Wires	NEMA Plug	Amps Lights	Amps Fans	Amps Anti-Sweats	Amps Misc/Refrig/Heat
FB8SS-6H	Heat (N/A)-Type I Env	Circuit #1	208	1	60	34.67	50	50	7,211	2+G	Leads Multiple	N/A	N/A	N/A	34.67
	Heat (N/A)-Type I Env	Circuit #3	208	1	60	22.56	30	30	4,450	2+G	Leads Multiple	0.72	N/A	N/A	21.84
	Heat (N/A)-Type I Env	Circuit #1	208	1	60	5.80	15	15	1,207	2+G	Leads Multiple	N/A	N/A	5.80	N/A
	Heat (N/A)-Type I Env	Circuit #2	208	1	60	5.80	15	15	1,207	2+G	Leads Multiple	N/A	N/A	5.80	N/A
FB10SS-8H	Heat (N/A)-Type I Env	Circuit #1	208	1	60	23.06	30	30	4,797	2+G	Leads Multiple	N/A	N/A	N/A	23.06
	Heat (N/A)-Type I Env	Circuit #2	208	1	60	23.06	30	30	4,797	2+G	Leads Multiple	N/A	N/A	N/A	23.06
	Heat (N/A)-Type I Env	Circuit #3	208	1	60	29.84	40	40	5,943	2+G	Leads Multiple	0.72	N/A	N/A	29.12
	Heat (N/A)-Type I Env	Circuit #1	208	1	60	8.70	15	15	1,810	2+G	Leads Multiple	N/A	N/A	8.70	N/A
	Heat (N/A)-Type I Env	Circuit #2	208	1	60	8.70	15	15	1,810	2+G	Leads Multiple	N/A	N/A	8.70	N/A

REFRIGERATION												
Model	Zone	Section	System	Envt	REMOTE REFRIGERATION					GLYCOL / R744 REFRIGERATION		
					SST (°F)	Conv. Rack BTUH	Para. Rack BTUH	Defrost Interval (Hrs)	Defrost Duration	Total GPM	Pressure Drop (psi)	Concent (%)

INTENDED ENVIRONMENT		
Type I - Designed to operate in ambient conditions of 75°F with 55% relative humidity unless noted otherwise under Envt above.		
WARMEST AVERAGE PRODUCT TEMP & INTENDED USE OF ZONES		
Zone	Temp (°F)	Intended Use
1	160	Unpackaged heated product

IMPORTANT NOTES
1) ELECTRICAL NOTE: If GFCI is required, a GFCI breaker MUST be used in lieu of a GFCI receptacle.
2) Units must be shimmed during installation to ensure the unit is level and plumb.
3) Floor drain required for steam wells.
4) Auto fill options use 1/2" water line.
5) Manual fill and Auto fill options use 3/4" drain line.

REGULATORY	
All Models	ETL Listed to UL 197 ETL Listed to CAN/CSA 22.2 No. 109 ETL Sanitation to NSF/ANSI 4

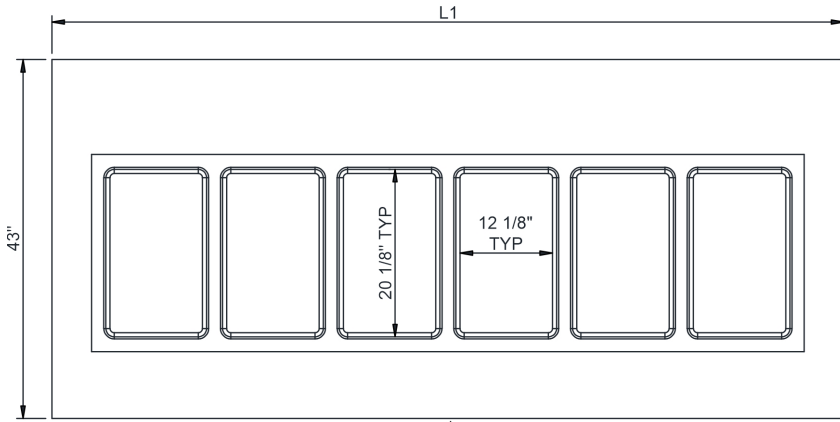


Technical Information

Grocerant - Heated Self-Service Food Bar 43"D

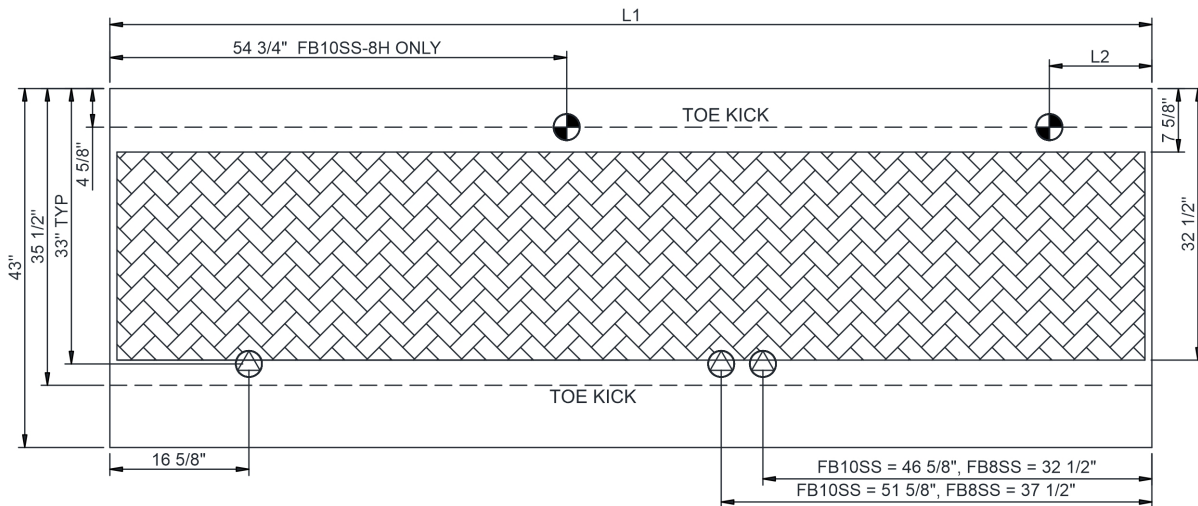
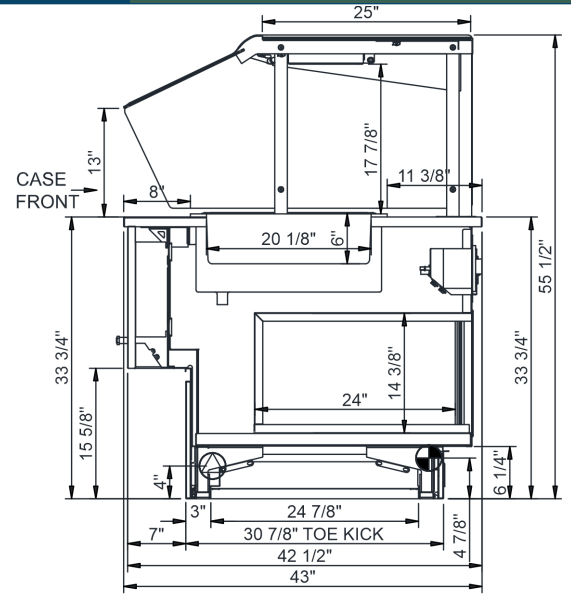
Structural Concepts®

DELIVERING FRESH. ALWAYS.™



FB8SS-6H TOP VIEW SHOWN

	WELLS
FB8SS-6H	6
FB10SS-8H	8



NOTE: ALL DIMENSIONS APPROXIMATE

ELECTRICAL JUNCTION BOX (SUPPLIED WITH 6" LEADS OR POWER CORD).
 LOCATION OF DRAIN TUBE FOR REMOTE REF. ONLY (SUPPLIED WITH 3/4" OR 1 1/2" PVC TUBE).

REFRIGERATION LINE CONNECTION.
 REMOTE FLOOR SINK & UTILITIES ACCESS AREA.

SELF-CONTAINED CASE SERVICE ACCESS AREA.
 DRY CASE SERVICE ACCESS AREA.