

# Technical Information

Oasis - Refrigerated Self-Service Counter Height Case 34"D

Structural Concepts®

DELIVERING FRESH. ALWAYS.™

## DIMENSIONS / SHIPPING

Model	L"	L1"	L2"	Est Wt (lbs)
C33R-CH	33.125	35.625	0.000	N/A
C43R-CH	45.125	47.625	0.000	N/A
C53R-CH	57.125	59.625	0.000	N/A
C63R-CH	69.125	71.625	0.000	N/A

## ELECTRICAL

Model	System Circuit Volts			Ph	Frq	Rated Load Amps	Min Cir Amps	Max OCP Amps	Watts	Wires	NEMA Plug	Amps Lights	Amps Fans	Amps Anti-Sweats	Amps Misc/Refrig/Heat
C33R-CH	Self-Contained (R290)	Circuit #1	110-120	1	60	10.85	15	15	965	2+G	5-15P or L5-15P	1.12	0.45	4.08	5.20
C43R-CH	Self-Contained (R290)	Circuit #1	110-120	1	60	11.35	15	15	994	2+G	5-15P or L5-15P	1.12	0.90	4.13	5.20
C53R-CH	Self-Contained (R290)	Circuit #1	110-120	1	60	15.70	20	20	1,531	2+G	5-20P or L5-20P	1.12	0.90	4.18	9.50
C63R-CH	Self-Contained (R290)	Circuit #1	110-120	1	60	15.74	20	20	1,540	2+G	5-20P or L5-20P	1.12	0.90	4.22	9.50

## REFRIGERATION

Model	Zone	Section	System	Envt	REMOTE REFRIGERATION					GLYCOL / R744 REFRIGERATION			
					SST (°F)	Conv. Rack BTUH	Para. Rack BTUH	Defrost Interval (Hrs)	Defrost Duration	Total GPM	Pressure Drop (psi)	Concent (%)	Liquid Temp (°F)
C33R-CH	All	Refrigerator	Self-Contained-R290	Type II	N/A	N/A	N/A	N/A	N/A	N/A	N/A	N/A	N/A
C43R-CH	All	Refrigerator	Self-Contained-R290	Type II	N/A	N/A	N/A	N/A	N/A	N/A	N/A	N/A	N/A
C53R-CH	All	Refrigerator	Self-Contained-R290	Type II	N/A	N/A	N/A	N/A	N/A	N/A	N/A	N/A	N/A
C63R-CH	All	Refrigerator	Self-Contained-R290	Type II	N/A	N/A	N/A	N/A	N/A	N/A	N/A	N/A	N/A

## INTENDED ENVIRONMENT

Type II - Designed to operate in ambient conditions of 80°F and 55% relative humidity unless noted otherwise under Envt above.

## WARMEST AVERAGE PRODUCT TEMP & INTENDED USE OF ZONES

Zone	Temp (°F)	Intended Use
1	40	Packaged refrigerated products

## IMPORTANT NOTES

- 1) Performance issues (product temperatures, water on floor, etc.) caused by adverse conditions are not covered by warranty.
- 2) Levelers must be adjusted during installation to ensure unit is level and plumb.
- 3) Keep unit at least 15' from exterior doors, overhead HVAC vents, or any air curtain disruption.
- 4) Do not expose unit to direct sunlight or any heat source (ovens, fryers, etc.).
- 5) Front access compressor air intake at lower front, discharge from lower rear. Lower panels cannot be blocked. Wall spacers required for proper air flow. Rear access reverses air flow direction.
- 6) If GFCI is required, a GFCI breaker MUST be used in lieu of a GFCI receptacle.

## REGULATORY

All Models	Accordance with AHRI Std 1200 ETL Listed to UL 471 ETL Listed to CAN/CSA 22.2 No. 120 ETL Sanitation to NSF/ANSI 7
------------	---



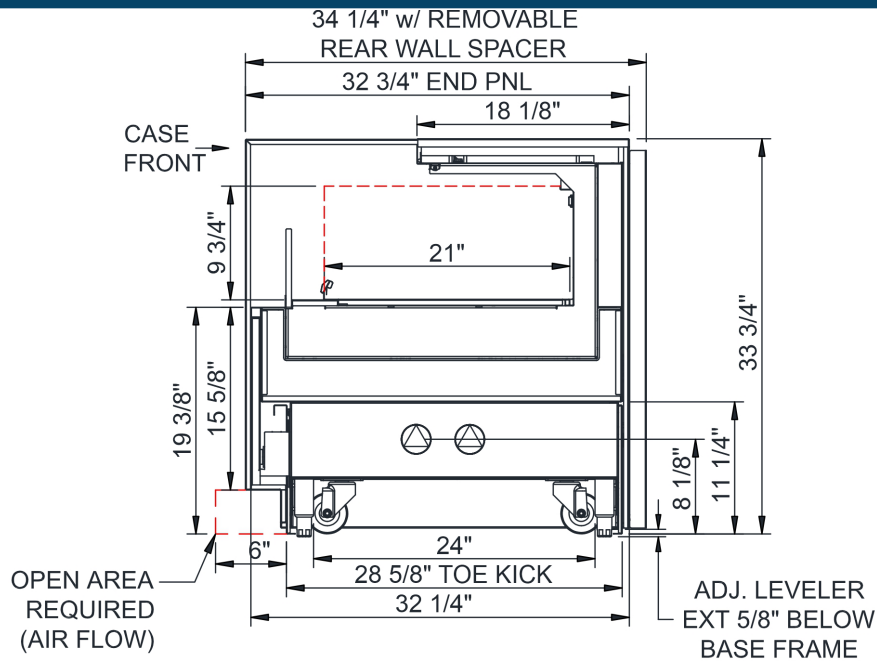
In Accordance with  
AHRI Std 1200

# Technical Information

Oasis - Refrigerated Self-Service Counter Height Case 34"D

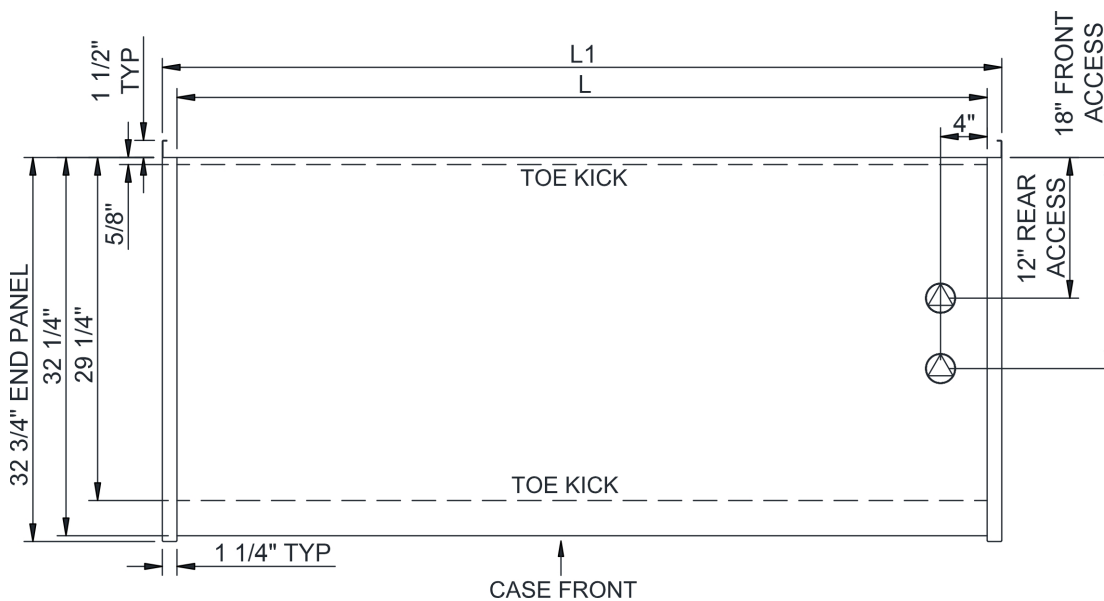
Structural Concepts®

DELIVERING FRESH. ALWAYS.™



## NOTES:

1. SELF-CONTAINED ACCESS ONLY BY PULLING OUT CONDENSER DRAWER
2. COMPRESSOR REAR INTAKE, FRONT DISCHARGE AT TOE KICK. REAR & FRONT PANELS CANNOT BE BLOCKED. (INTAKE/DISCHARGE REVERSED WHEN FRONT ACCESS)
3. REAR SPACERS REQUIRED WITH FRONT ACCESS REFRIGERATION



NOTE: ALL DIMENSIONS APPROXIMATE

⊗ ELECTRICAL JUNCTION BOX  
(SUPPLIED WITH 6" LEADS OR POWER CORD).  
● LOCATION OF DRAIN TUBE FOR REMOTE REF.  
ONLY (SUPPLIED WITH 3/4" OR 1 1/2" PVC TUBE).

⊕ REFRIGERATION LINE CONNECTION.  
⊞ REMOTE FLOOR SINK & UTILITIES  
ACCESS AREA.

⊞ SELF-CONTAINED CASE SERVICE ACCESS AREA.  
⊞ DRY CASE SERVICE ACCESS AREA.