

Technical Information

Oasis - Refrigerated Self-Service Under Counter Case 34"D

Structural Concepts®

DELIVERING FRESH. ALWAYS.™

DIMENSIONS / SHIPPING

| Model | L" | L1" | L2" | Est Wt (lbs) |
|---------|--------|--------|-------|--------------|
| C33R-UC | 33.125 | 35.625 | 0.000 | N/A |
| C43R-UC | 45.125 | 47.625 | 0.000 | N/A |
| C53R-UC | 57.125 | 59.625 | 0.000 | N/A |
| C63R-UC | 69.125 | 71.625 | 0.000 | N/A |

ELECTRICAL

| Model | System Circuit Volts | | | Ph | Frq | Rated Load Amps | Min Cir Amps | Max OCP Amps | Watts | Wires | NEMA Plug | Amps Lights | Amps Fans | Amps Anti-Sweats | Amps Misc/Refrig/Heat |
|---------|-----------------------|------------|---------|----|-----|-----------------|--------------|--------------|-------|-------|-----------------|-------------|-----------|------------------|-----------------------|
| C33R-UC | Self-Contained (R290) | Circuit #1 | 110-120 | 1 | 60 | 10.85 | 15 | 15 | 965 | 2+G | 5-15P or L5-15P | 1.12 | 0.45 | 4.08 | 5.20 |
| C43R-UC | Self-Contained (R290) | Circuit #1 | 110-120 | 1 | 60 | 11.35 | 15 | 15 | 994 | 2+G | 5-15P or L5-15P | 1.12 | 0.90 | 4.13 | 5.20 |
| C53R-UC | Self-Contained (R290) | Circuit #1 | 110-120 | 1 | 60 | 15.70 | 20 | 20 | 1,531 | 2+G | 5-20P or L5-20P | 1.12 | 0.90 | 4.18 | 9.50 |
| C63R-UC | Self-Contained (R290) | Circuit #1 | 110-120 | 1 | 60 | 15.74 | 20 | 20 | 1,540 | 2+G | 5-20P or L5-20P | 1.12 | 0.90 | 4.22 | 9.50 |

REFRIGERATION

| Model | Zone | Section | System | Env't | REMOTE REFRIGERATION | | | | | GLYCOL / R744 REFRIGERATION | | | |
|---------|------|--------------|---------------------|---------|----------------------|-----------------|-----------------|------------------------|------------------|-----------------------------|---------------------|-------------|------------------|
| | | | | | SST (°F) | Conv. Rack BTUH | Para. Rack BTUH | Defrost Interval (Hrs) | Defrost Duration | Total GPM | Pressure Drop (psi) | Concent (%) | Liquid Temp (°F) |
| C33R-UC | All | Refrigerator | Self-Contained-R290 | Type II | N/A | N/A | N/A | N/A | N/A | N/A | N/A | N/A | N/A |
| C43R-UC | All | Refrigerator | Self-Contained-R290 | Type II | N/A | N/A | N/A | N/A | N/A | N/A | N/A | N/A | N/A |
| C53R-UC | All | Refrigerator | Self-Contained-R290 | Type II | N/A | N/A | N/A | N/A | N/A | N/A | N/A | N/A | N/A |
| C63R-UC | All | Refrigerator | Self-Contained-R290 | Type II | N/A | N/A | N/A | N/A | N/A | N/A | N/A | N/A | N/A |

INTENDED ENVIRONMENT

Type II - Designed to operate in ambient conditions of 80°F and 55% relative humidity unless noted otherwise under Env't above.

WARMEST AVERAGE PRODUCT TEMP & INTENDED USE OF ZONES

| Zone | Temp (°F) | Intended Use |
|------|-----------|--------------------------------|
| 1 | 40 | Packaged refrigerated products |

IMPORTANT NOTES

- 1) Performance issues (product temperatures, water on floor, etc.) caused by adverse conditions are not covered by warranty.
- 2) Levelers must be adjusted during installation to ensure unit is level and plumb.
- 3) Keep unit at least 15' from exterior doors, overhead HVAC vents, or any air curtain disruption.
- 4) Do not expose unit to direct sunlight or any heat source (ovens, fryers, etc.).
- 5) Front access compressor air intake at lower front, discharge from lower rear. Lower panels cannot be blocked. Wall spacers required for proper air flow. Rear access reverses air flow direction.
- 6) If GFCI is required, a GFCI breaker MUST be used in lieu of a GFCI receptacle.

REGULATORY

| | |
|------------|---|
| All Models | Accordance with AHRI Std 1200 ETL Listed to UL 471 ETL Listed to CAN/CSA 22.2 No. 120 ETL Sanitation to NSF/ANSI 7 |
|------------|---|



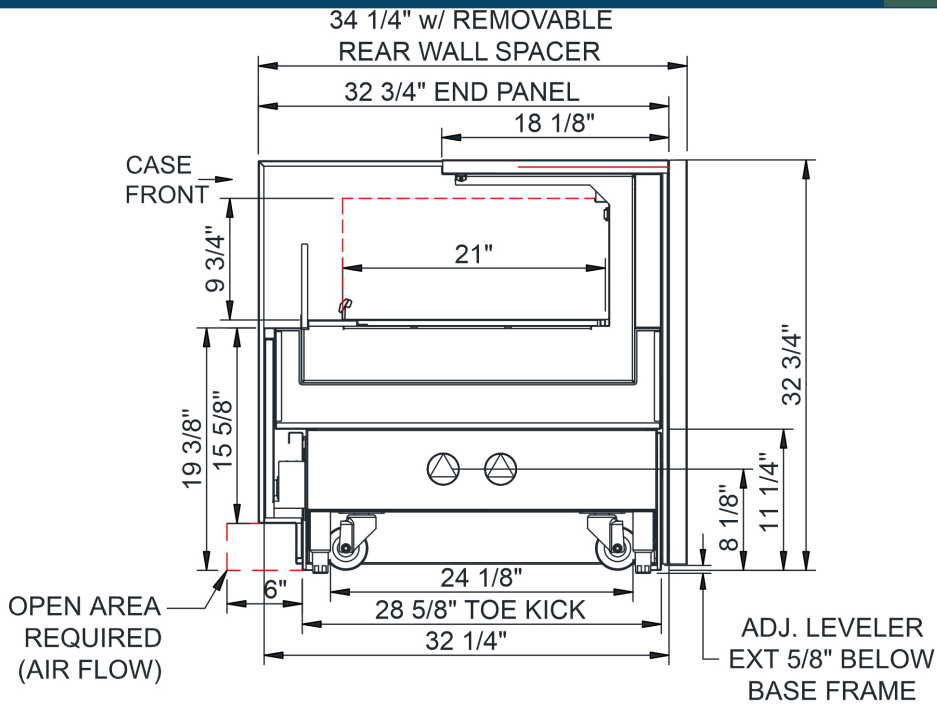
In Accordance with
AHRI Std 1200

Technical Information

Oasis - Refrigerated Self-Service Under Counter Case 34"D

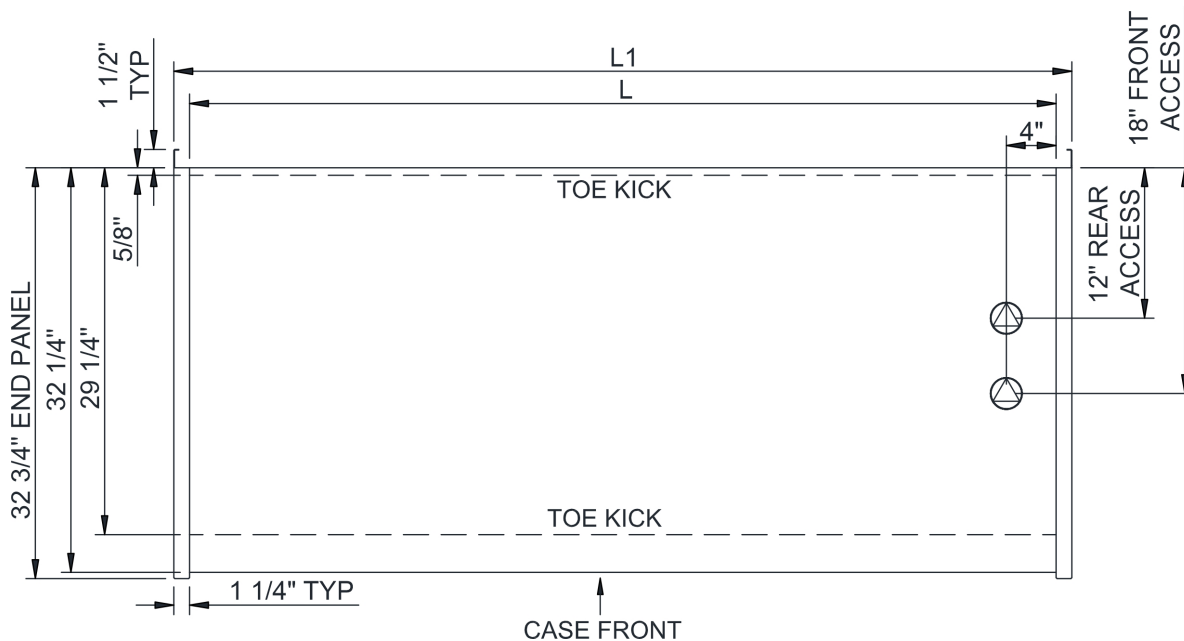
Structural Concepts®

DELIVERING FRESH. ALWAYS.™



NOTES:

1. SELF-CONTAINED ACCESS ONLY BY PULLING OUT CONDENSER DRAWER
2. COMPRESSOR FRONT INTAKE, REAR DISCHARGE AT TOE KICK. REAR & FRONT PANELS CANNOT BE BLOCKED. (INTAKE/DISCHARGE REVERSED WHEN REAR ACCESS)



NOTE: ALL DIMENSIONS APPROXIMATE

- ELECTRICAL JUNCTION BOX (SUPPLIED WITH 6" LEADS OR POWER CORD).
- LOCATION OF DRAIN TUBE FOR REMOTE REF. ONLY (SUPPLIED WITH 3/4" OR 1 1/2" PVC TUBE).

- REFRIGERATION LINE CONNECTION.
- REMOTE FLOOR SINK & UTILITIES ACCESS AREA.

- SELF-CONTAINED CASE SERVICE ACCESS AREA.
- DRY CASE SERVICE ACCESS AREA.