

Technical Information

Oasis - Refrigerated Self-Service Case 34"D

Structural Concepts®

DELIVERING FRESH. ALWAYS.™

DIMENSIONS / SHIPPING

Model	L"	L1"	L2"	Est Wt (lbs)
B37R	33.125	35.625	0.000	N/A
B47R	45.125	47.625	0.000	N/A
B57R	57.125	59.625	0.000	N/A
B67R	69.125	71.625	0.000	N/A

ELECTRICAL

Model	System Circuit Volts			Ph	Frq	Rated Load Amps	Min Cir Amps	Max OCP Amps	Watts	Wires	NEMA Plug	Amps Lights	Amps Fans	Amps Anti-Sweats	Amps Misc/Refrig/Heat
B37R	Self-Contained (R290)	Circuit #1	208-240	1	60	10.77	15	15	1,199	2+G	6-15P or L6-15P	0.61	0.22	3.44	6.50
	Self-Contained (R290)	Circuit #1	110-120	1	60	15.14	20	20	485	2+G	5-20P or L5-20P	1.12	0.90	0.12	13.00
B47R	Self-Contained (R290)	Circuit #1	208-240	1	60	16.00	20	20	1,640	2+G	6-20P or L6-20P	0.61	0.44	3.50	13.00
B57R	Self-Contained (R290)	Circuit #1	208-240	1	60	16.00	20	20	1,665	2+G	6-20P or L6-20P	0.61	0.44	3.52	13.00
B67R	Self-Contained (R290)	Circuit #1	208-240	1	60	16.00	20	20	1,689	2+G	6-20P or L6-20P	0.61	0.44	3.54	13.00

REFRIGERATION

Model	Zone	Section	System	Envt	REMOTE REFRIGERATION					GLYCOL / R744 REFRIGERATION			
					SST (°F)	Conv. Rack BTUH	Para. Rack BTUH	Defrost Interval (Hrs)	Defrost Duration	Total GPM	Pressure Drop (psi)	Concent (%)	Liquid Temp (°F)
B37R	All	Refrigerator	Self-Contained-R290	Type II	N/A	N/A	N/A	N/A	N/A	N/A	N/A	N/A	N/A
B47R	All	Refrigerator	Self-Contained-R290	Type II	N/A	N/A	N/A	N/A	N/A	N/A	N/A	N/A	N/A
B57R	All	Refrigerator	Self-Contained-R290	Type II	N/A	N/A	N/A	N/A	N/A	N/A	N/A	N/A	N/A
B67R	All	Refrigerator	Self-Contained-R290	Type II	N/A	N/A	N/A	N/A	N/A	N/A	N/A	N/A	N/A

INTENDED ENVIRONMENT

Type II - Designed to operate in ambient conditions of 80°F and 55% relative humidity unless noted otherwise under Envt above.

WARMEST AVERAGE PRODUCT TEMP & INTENDED USE OF ZONES

Zone	Temp (°F)	Intended Use
1	40	Packaged refrigerated products

IMPORTANT NOTES

- 1) Performance issues (product temperatures, water on floor, etc.) caused by adverse conditions are not covered by warranty.
- 2) Levelers must be adjusted during installation to ensure unit is level and plumb.
- 3) Keep unit at least 15' from exterior doors, overhead HVAC vents, or any air curtain disruption.
- 4) Do not expose unit to direct sunlight or any heat source (ovens, fryers, etc.).
- 5) End panels must be tightly joined or kept at least 6" away from any structure to prevent condensation.
- 6) Tile floors, low ceilings, or small rooms will increase noise level.
- 7) Compressor air intake at lower front, discharge from lower rear. Lower panels cannot be blocked. Wall spacers required for proper air flow.
- 8) If GFCI is required, a GFCI breaker MUST be used in lieu of a GFCI receptacle.

REGULATORY

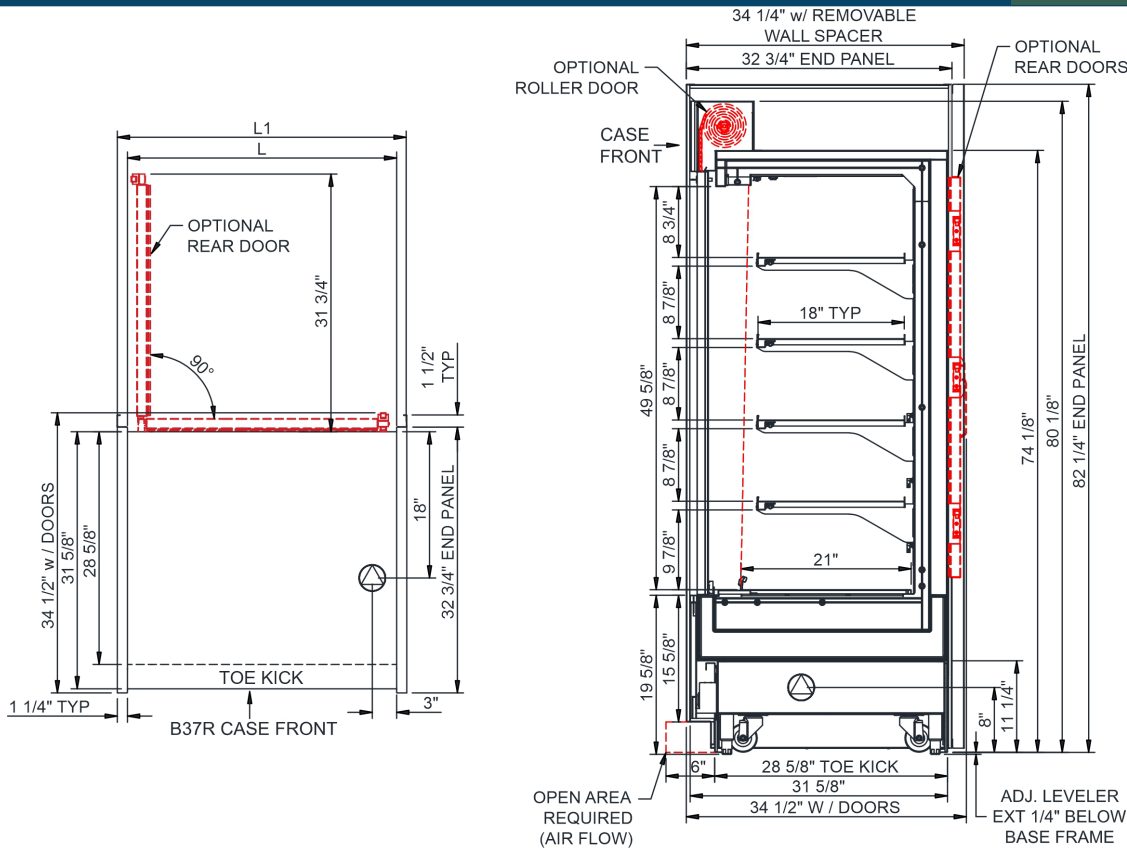
All Models	<p>Accordance with AHRI Std 1200</p> <p>ETL Listed to UL 471 & UL 60335-2-89</p> <p>ETL Listed to CAN/CSA 22.2 No. 120</p> <p>ETL Sanitation to NSF/ANSI 7</p>
------------	--



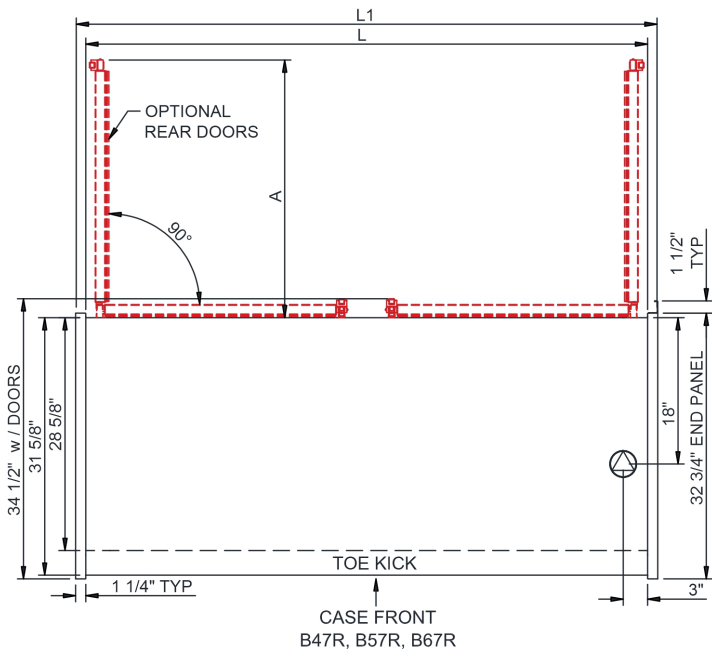
In Accordance with
AHRI Std 1200

Technical Information

Oasis - Refrigerated Self-Service Case 34"D



MODEL	A
B47R	21 3/4"
B57R	27 3/4"
B67R	31 3/4"



NOTE: ALL DIMENSIONS APPROXIMATE

- ELECTRICAL JUNCTION BOX (SUPPLIED WITH 6" LEADS OR POWER CORD).
- REFRIGERATION LINE CONNECTION.
- SELF-CONTAINED CASE SERVICE ACCESS AREA.
- REMOTE FLOOR SINK & UTILITIES ACCESS AREA.
- DRY CASE SERVICE ACCESS AREA.