

Technical Information

Oasis - Non-Refrigerated Self-Service Case 34"D

Structural Concepts®

DELIVERING FRESH. ALWAYS.™

DIMENSIONS / SHIPPING

Model	L"	L1"	L2"	Est Wt (lbs)
B37D	33.125	35.625	0.000	N/A
B47D	45.125	47.625	0.000	N/A

ELECTRICAL

Model	System Circuit Volts			Ph	Frq	Rated Load Amps	Min Cir Amps	Max OCP Amps	Watts	Wires	NEMA Plug	Amps Lights	Amps Fans	Amps Anti-Sweats	Amps Misc/Refrig/Heat
B37D	Ambient/Lights (N/A)	Circuit #1	110-120	1	60	1.12	15	15	46	2+G	5-15P or L5-15P	1.12	N/A	N/A	N/A
B47D	Ambient/Lights (N/A)	Circuit #1	110-120	1	60	1.12	15	15	65	2+G	5-15P or L5-15P	1.12	N/A	N/A	N/A

REFRIGERATION

Model	Zone	Section	System	Envt	REMOTE REFRIGERATION					GLYCOL / R744 REFRIGERATION			
					SST (°F)	Conv. Rack BTUH	Para. Rack BTUH	Defrost Interval (Hrs)	Defrost Duration	Total GPM	Pressure Drop (psi)	Concent (%)	Liquid Temp (°F)
B37D	All	Ambient	Ambient/Lights-N/A	Type II	N/A	N/A	N/A	N/A	N/A	N/A	N/A	N/A	N/A
B47D	All	Ambient	Ambient/Lights-N/A	Type II	N/A	N/A	N/A	N/A	N/A	N/A	N/A	N/A	N/A

INTENDED ENVIRONMENT

Type I - Designed to operate in ambient conditions of 75°F with 55% relative humidity unless noted otherwise under Envt above.

WARMEST AVERAGE PRODUCT TEMP & INTENDED USE OF ZONES

Zone	Temp (°F)	Intended Use
1	Ambient	Packaged non-refrigerated products

IMPORTANT NOTES

- 1) Performance issues (product temperatures, water on floor, etc.) caused by adverse conditions are not covered by warranty.
- 2) Do not expose unit to direct sunlight or any heat source (ovens, fryers, etc.).
- 3) If GFCI is required, a GFCI breaker MUST be used in lieu of a GFCI receptacle.

REGULATORY

None

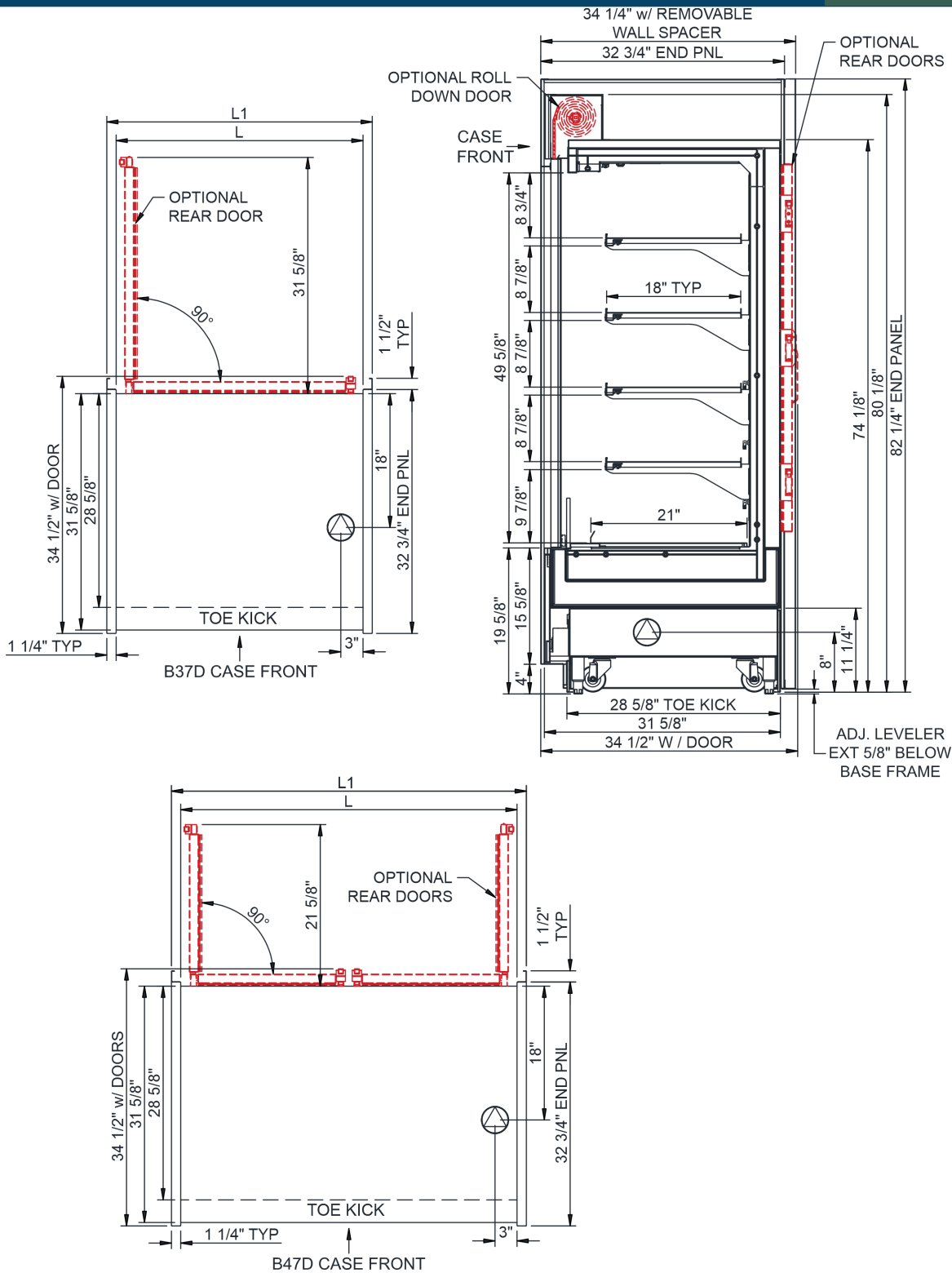


Technical Information

Oasis - Non-Refrigerated Self-Service Case 34"D

Structural Concepts®

DELIVERING FRESH. ALWAYS.™



NOTE: ALL DIMENSIONS APPROXIMATE

- | | | |
|--|--|---|
|  ELECTRICAL JUNCTION BOX (SUPPLIED WITH 6" LEADS OR POWER CORD). |  REFRIGERATION LINE CONNECTION. |  SELF-CONTAINED CASE SERVICE ACCESS AREA. |
|  LOCATION OF DRAIN TUBE FOR REMOTE REF. ONLY (SUPPLIED WITH 3/4" OR 1 1/2" PVC TUBE). |  REMOTE FLOOR SINK & UTILITIES ACCESS AREA. |  DRY CASE SERVICE ACCESS AREA. |