

# Technical Information

Reveal® - Convertible Service Above Refrigerated Service Case

Structural Concepts®

DELIVERING FRESH. ALWAYS.™

## DIMENSIONS / SHIPPING

Model	L"	L1"	L2"	Est Wt (lbs)
NR3651RRSV	N/A	35.750	4.125	N/A
NR4851RRSV	N/A	47.750	4.125	N/A
NR6051RRSV	N/A	59.750	4.125	N/A
NR7251RRSV	N/A	71.750	4.125	N/A

## ELECTRICAL

Model	System Circuit Volts			Ph	Frq	Rated Load Amps	Min Cir Amps	Max OCP Amps	Watts	Wires	NEMA Plug	Amps Lights	Amps Fans	Amps Anti-Sweats	Amps Misc/Refrig/Heat
NR3651RRSV	Remote (DX)	Circuit #1	110-120	1	60	1.33	15	15	71	2+G	Leads Single	0.70	0.31	0.24	0.08
	Self-Contained (R513A)	Circuit #1	110-120	1	60	12.00	15	15	1,090	2+G	5-15P or L5-15P	0.70	0.93	6.49	4.20
NR4851RRSV	Remote (DX)	Circuit #1	110-120	1	60	1.45	15	15	91	2+G	Leads Single	0.70	0.31	0.36	0.08
	Self-Contained (R513A)	Circuit #1	110-120	1	60	12.00	15	15	1,110	2+G	5-15P or L5-15P	0.70	0.93	6.61	4.20
NR6051RRSV	Remote (DX)	Circuit #1	110-120	1	60	1.84	15	15	125	2+G	Leads Single	0.70	0.62	0.44	0.08
	Self-Contained (R513A)	Circuit #1	110-120	1	60	10.34	15	15	858	2+G	5-15P or L5-15P	0.70	1.24	4.40	4.00
NR7251RRSV	Remote (DX)	Circuit #1	110-120	1	60	1.92	15	15	142	2+G	Leads Single	0.70	0.62	0.52	0.08
	Self-Contained (R513A)	Circuit #1	110-120	1	60	10.42	15	15	875	2+G	5-15P or L5-15P	0.70	1.24	4.48	4.00

## REFRIGERATION

Model	Zone	Section	System	Envt	REMOTE REFRIGERATION					GLYCOL / R744 REFRIGERATION			
					SST (°F)	Conv. Rack BTUH	Para. Rack BTUH	Defrost Interval (Hrs)	Defrost Duration	Total GPM	Pressure Drop (psi)	Concent (%)	Liquid Temp (°F)
NR3651RRSV	All	Main	Self-Contained-R513A	Type II	N/A	N/A	N/A	N/A	N/A	N/A	N/A	N/A	N/A
	All	Main	Remote-DX	Type II	20	1,166	1,080	4.00	30.00	N/A	N/A	N/A	N/A
NR4851RRSV	All	Main	Self-Contained-R513A	Type II	N/A	N/A	N/A	N/A	N/A	N/A	N/A	N/A	N/A
	All	Main	Remote-DX	Type II	20	1,534	1,420	4.00	30.00	N/A	N/A	N/A	N/A
NR6051RRSV	All	Main	Self-Contained-R513A	Type II	N/A	N/A	N/A	N/A	N/A	N/A	N/A	N/A	N/A
	All	Main	Remote-DX	Type II	20	1,879	1,740	4.00	25.00	N/A	N/A	N/A	N/A
NR7251RRSV	All	Refrigerator	Self-Contained-R513A	Type II	N/A	N/A	N/A	N/A	N/A	N/A	N/A	N/A	N/A
	All	Refrigerator	Remote-DX	Type II	20	2,246	2,080	4.00	25.00	N/A	N/A	N/A	N/A

## INTENDED ENVIRONMENT

Type II - Designed to operate in ambient conditions of 80°F and 55% relative humidity unless noted otherwise under Envt above.

## WARMEST AVERAGE PRODUCT TEMP & INTENDED USE OF ZONES

Zone	Temp (°F)	Intended Use
1	40	Packaged / unpackaged refrigerated products

## IMPORTANT NOTES

- 1) ELECTRICAL NOTE: If GFCI is required, a GFCI breaker MUST be used in lieu of a GFCI receptacle.
- 2) Glass warranty only applicable to first point of delivery.
- 3) Compressor air intake from rear and out front panel at toe kick. Front panel cannot be blocked.

## REGULATORY

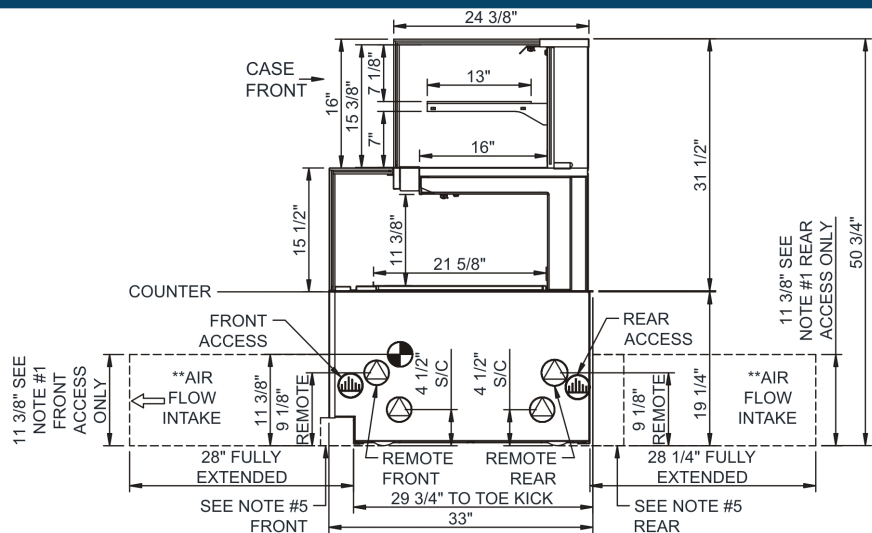
All Models	Accordance with AHRI Std 1200 ETL Listed to UL 471 ETL Listed to CAN/CSA 22.2 No. 120 ETL Sanitation to NSF/ANSI 7
------------	---



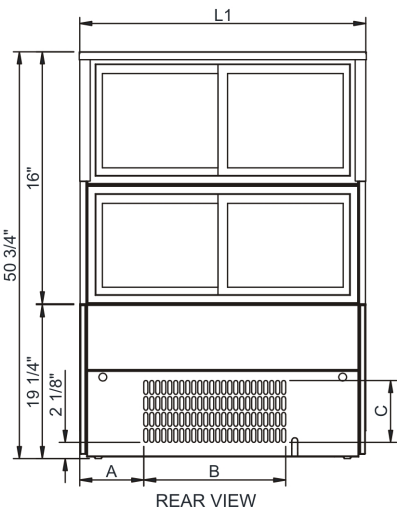
In Accordance with  
AHRI Std 1200

Technical Information

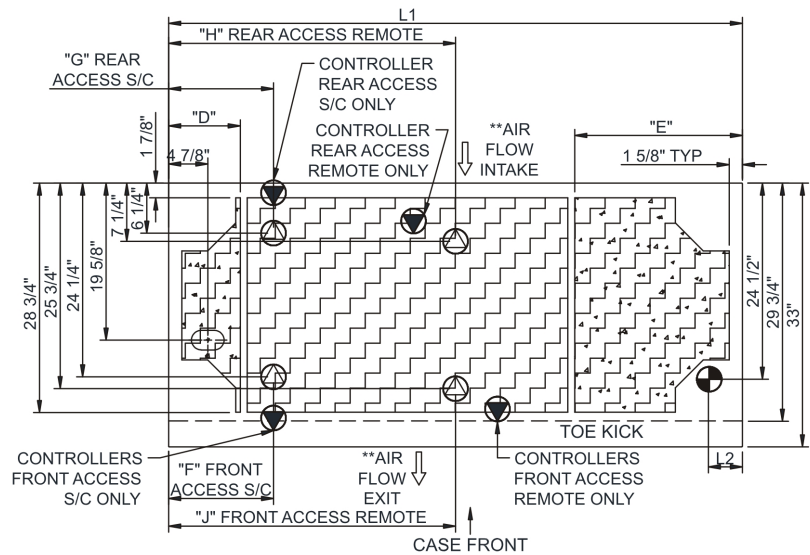
Reveal® - Convertible Service Above Refrigerated Service Case



- NOTES:
- 1. 11 3/8" TALL, FULL WIDTH OF CASE OPENING IN CABINET OR COUNTER IS REQUIRED TO PULL OUT REFRIGERATION SYSTEM.
  - 2. BACK OF COUNTER / CABINET MUST BE VENTED PROPERLY FOR ADEQUATE AIRFLOW TO CONDENSER.
  - 3. \*\*REPRESENTS REAR PULLOUT REFRIGERATION. AIR FLOW INTAKE AND EXIT DETAILS ARE REVERSED WITH FRONT PULLOUT REFRIGERATION OPTION.
  - 4. SELF-CONTAINED ACCESS ONLY BY PULLING OUT CONDENSER UNIT.
  - 5. 4" OPEN AREA CLEARANCE REQUIRED FOR AIR FLOW FRONT AND REAR OF CASE.



	"A"	"B"	"C"
NR3651RRSV	8"	17 3/4"	7 3/4"
NR4851RRSV	14"	17 3/4"	7 3/4"
NR6051RRSV	26"	17 3/4"	7 3/4"
NR7251RRSV	26 1/8"	17 3/4"	7 3/4"



	"D"	"E"	"F"	"G"	"H"	"J"
NR3651RRSV	N/A	N/A	7 1/8"	7 1/8"	17 7/8"	17 7/8"
NR4851RRSV	N/A	N/A	13 1/8"	7 1/8"	23 7/8"	23 7/8"
NR6051RRSV	9"	9"	13 1/8"	13 1/8"	29 7/8"	29 7/8"
NR7251RRSV	9"	21"	13 1/8"	13 1/8"	35 7/8"	35 7/8"

NOTE: ALL DIMENSIONS APPROXIMATE

- ELECTRICAL JUNCTION BOX (SUPPLIED WITH 6" LEADS OR POWER CORD).
- REFRIGERATION LINE CONNECTION.
- SELF-CONTAINED CASE SERVICE ACCESS AREA.
- LOCATION OF DRAIN TUBE FOR REMOTE REF. ONLY (SUPPLIED WITH 3/4" OR 1 1/2" PVC TUBE).
- REMOTE FLOOR SINK & UTILITIES ACCESS AREA.
- DRY CASE SERVICE ACCESS AREA.