

Technical Information

Reveal® - Refrigerated Service Case

Structural Concepts®

DELIVERING FRESH. ALWAYS.™

DIMENSIONS / SHIPPING

Model	L"	L1"	L2"	Est Wt (lbs)
NR3633RSV	N/A	35.750	7.500	N/A
NR4833RSV	N/A	47.750	7.500	N/A

ELECTRICAL

Model	System Circuit Volts			Ph	Frq	Rated Load Amps	Min Cir Amps	Max OCP Amps	Watts	Wires	NEMA Plug	Amps Lights	Amps Fans	Amps Anti-Sweats	Amps Misc/Refrig/Heat
NR3633RSV	Remote (DX)	Circuit #1	110-120	1	60	0.78	15	15	14	2+G	Leads Single	0.70			0.08
	Remote (DX)	Circuit #1	110-120	1	60	0.78	15	15	14	2+G	Leads Single	0.70			0.08
	Self-Contained (R290)	Circuit #1	110-120	1	60	10.73	15	15	950	2+G	5-15P or L5-15P	1.12	0.45	3.96	5.20
NR4833RSV	Self-Contained (R290)	Circuit #1	110-120	1	60	10.73	15	15	950	2+G	5-15P or L5-15P	N/A	0.45	3.96	6.32
	Remote (DX)	Circuit #1	110-120	1	60	1.08	15	15	30	2+G	Leads Single	0.70	0.30		0.08
	Remote (DX)	Circuit #1	110-120	1	60	1.08	15	15	30	2+G	Leads Single	0.70	0.30		0.08
NR4833RSV	Self-Contained (R290)	Circuit #1	110-120	1	60	11.18	15	15	974	2+G	5-15P or L5-15P	N/A	0.90	3.96	6.32

REFRIGERATION

Model	Zone	Section	System	Env't	REMOTE REFRIGERATION					GLYCOL / R744 REFRIGERATION			
					SST (°F)	Conv. Rack BTUH	Para. Rack BTUH	Defrost Interval (Hrs)	Defrost Duration	Total GPM	Pressure Drop (psi)	Concent (%)	Liquid Temp (°F)
NR3633RSV	All	Refrigerator	Remote-DX	Type II	20	713	660	4.00	30.00	N/A	N/A	N/A	N/A
	All	Refrigerator	Remote-DX	Type I	20	626	580	4.00	30.00	N/A	N/A	N/A	N/A
	All	Refrigerator	Self-Contained-R290	Type II	N/A	N/A	N/A	N/A	N/A	N/A	N/A	N/A	N/A
NR4833RSV	All	Refrigerator	Remote-DX	Type II	20	929	860	4.00	30.00	N/A	N/A	N/A	N/A
	All	Refrigerator	Remote-DX	Type I	20	821	760	4.00	30.00	N/A	N/A	N/A	N/A
	All	Main	Self-Contained-R290	Type II	N/A	N/A	N/A	N/A	N/A	N/A	N/A	N/A	N/A

INTENDED ENVIRONMENT

Type II - Designed to operate in ambient conditions of 80°F and 55% relative humidity unless noted otherwise under Env't above.

WARMEST AVERAGE PRODUCT TEMP & INTENDED USE OF ZONES

Zone	Temp (°F)	Intended Use
1	40	Unpackaged refrigerated products

REGULATORY

All Models	Accordance with AHRI Std 1200 ETL Listed to UL 471 ETL Listed to CAN/CSA 22.2 No. 120 ENERGY STAR® ETL Sanitation to NSF/ANSI 7
------------	---

IMPORTANT NOTES

- 1) ELECTRICAL NOTE: If GFCI is required, a GFCI breaker MUST be used in lieu of a GFCI receptacle
- 2) Back side of counter must be open or vented the full length of the unit to allow proper ventilation for the refrigeration system.
- 3) Glass warranty only applicable to first point of delivery.



In Accordance with
AHRI Std 1200

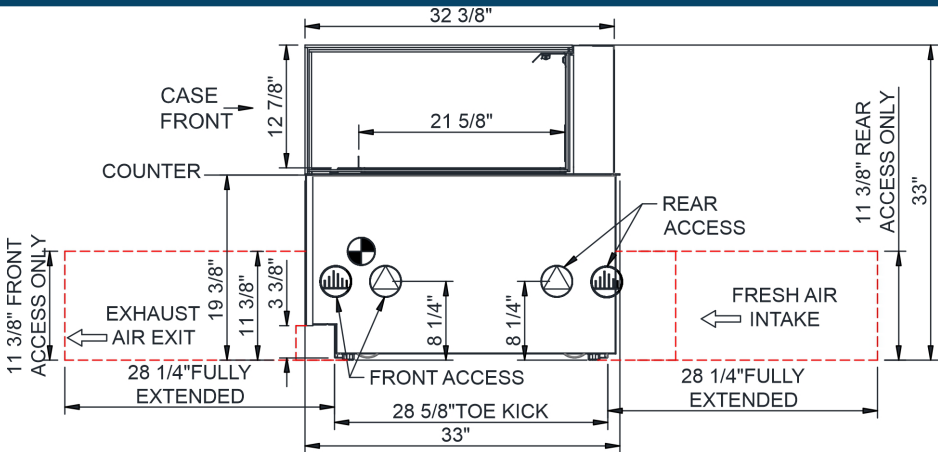


Technical Information

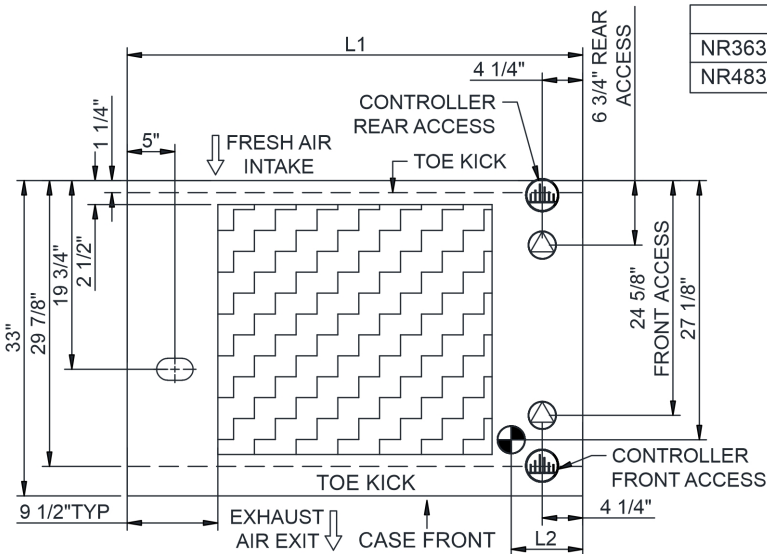
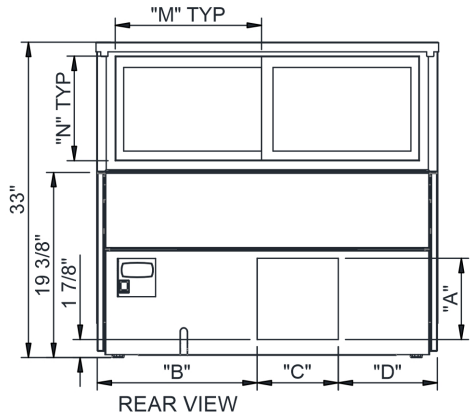
Reveal® - Refrigerated Service Case

Structural Concepts®

DELIVERING FRESH. ALWAYS.™



- NOTES:
1. 11 3/8" TALL, FULL WIDTH OF CASE OPENING IN CABINET OR COUNTER IS REQUIRED TO PULL OUT REFRIGERATION SYSTEM.
 2. BACK OF COUNTER / CABINET MUST BE VENTED PROPERLY FOR ADEQUATE AIRFLOW TO CONDENSER.
 3. **REPRESENTS REAR PULLOUT REFRIGERATION. AIR FLOW INTAKE AND EXIT DETAILS ARE REVERSED WITH FRONT PULLOUT REFRIGERATION OPTION.
 4. SELF-CONTAINED ACCESS ONLY BY PULLING OUT CONDENSER UNIT.
 5. 4" OPEN AREA CLEARANCE REQUIRED FOR AIR FLOW FRONT AND REAR OF CASE.



	"A"	"B"	"C"	"D"		"M"	"N"
NR3633RSV	8 1/2"	16 3/4"	8 1/2"	10 3/8"	NR3633RSV	15 3/8"	11"
NR4833RSV	8 1/2"	28 3/4"	8 1/2"	10 3/8"	NR4833RSV	21 3/8"	11"

NOTE: ALL DIMENSIONS APPROXIMATE

-  ELECTRICAL JUNCTION BOX (SUPPLIED WITH 6" LEADS OR POWER CORD).
-  REFRIGERATION LINE CONNECTION.
-  SELF-CONTAINED CASE SERVICE ACCESS AREA.
-  LOCATION OF DRAIN TUBE FOR REMOTE REF. ONLY (SUPPLIED WITH 3/4" OR 1 1/2" PVC TUBE).
-  REMOTE FLOOR SINK & UTILITIES ACCESS AREA.
-  DRY CASE SERVICE ACCESS AREA.