

- **B3632** 36-3/4"L x 32-1/4"D x 82-1/2"H
- **B4732** 47-3/4"L x 32-1/4"D x 82-1/2"H
- **B5932** 59-3/4"L x 32-1/4"D x 82-1/2"H
- **B7132** 71-3/4"L x 32-1/4"D x 82-1/2"H

### Included

- Blue Fin coated coil
- Flat upper front panel & header
- LED top light(s)
- One piece formed ABS plastic tub
- One year parts & labor warranty
- Removable deck pans provide complete access to evaporator coil & refrigeration connections
- Shelving removable and adjustable on 1" centers
- Warmest average product temperature of 40°F or less



**B4732**

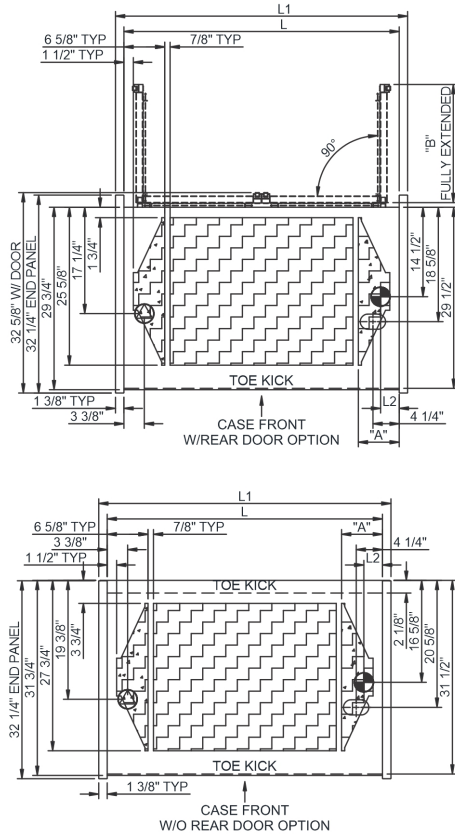
Specify	Standard Features	Additional Options
<b>EXTERIOR COLOR</b>	• Laminate (stock colors)	• Laminate (non-stock colors) • Stainless steel
<b>INTERIOR COLOR</b>	• Powder coated Silversan Black	• Stainless steel
<b>LOWER FRONT PANEL COLOR</b>	• Powder coated Silversan Black	• Stainless steel (must choose stainless exterior)
<b>REAR EXTERIOR COLOR</b>	• Black	• White
<b>BASE SUPPORT</b>	• Levelers (remote)	• Seismic levelers
<b>END PANELS</b>	• Full w/stainless steel mirror interior	• Cutaway w/glass • None (synchronized defrost required)
<b>REAR DOORS</b>	• None (solid back panel)	• Rear loading hinged doors, locking (changes air discharge to lower rear)
<b>SHELVING</b>	• Metal shelves, non-lighted	• Metal shelves, lighted (LED)
<b>LIGHTS</b>	• LED 4000K w/ frosted lens	• LED 3500K w/ frosted lens
<b>ELECTRICAL CONNECTION</b>	• Electrical leads (remote)	
<b>REFRIGERATION</b>	• Remote w/thermostat, solenoid & TXV	• Note: Remote doesn't incl Conds unit. Floor drain reqd.
<b>MISCELLANEOUS</b>		<sup>1</sup> • Roll-down security cover, locking (Requires two end panels (full or cutaway) per case) • Second year parts & labor warranty • Shelf w/ extended product stop & air deflectors for salad bins
<b>ACCESSORIES</b>		<sup>2</sup> • Night curtain, retractable, non-locking • Price tag molding (matches interior color) • Removable solid security cover, locking

**Option Notes:** 1 - n/a w/Night curtain  
2 - n/a w/Roll-down security cover

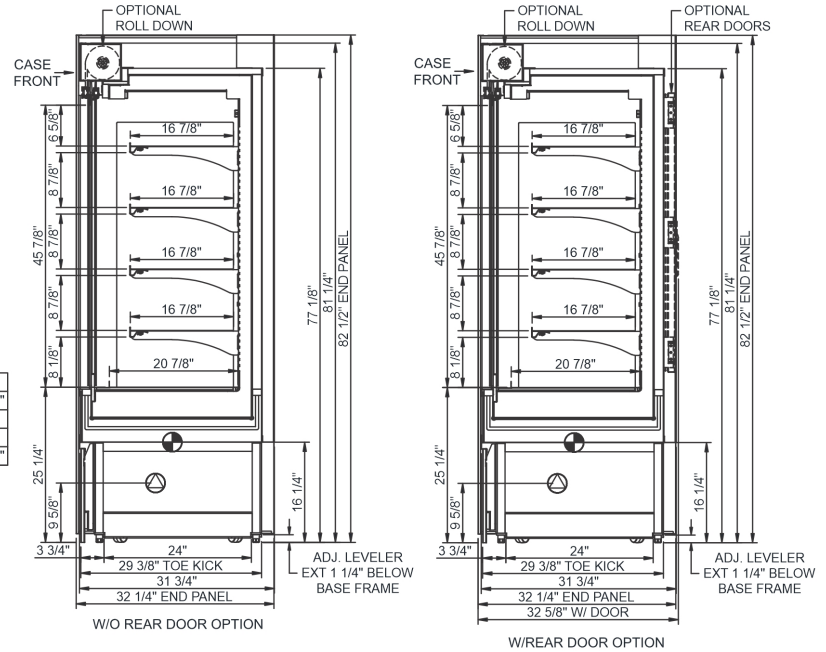
**Intended Environment:** Type II - Designed to operate in ambient conditions of 80°F and 55% relative humidity unless noted otherwise in system information below.

Zone	Intended Product To Be Displayed	Warmest Avg Prod Temp ° F
1	Packaged refrigerated products	40

PLAN VIEW



SIDE VIEW



## NOTE: ALL DIMENSIONS APPROXIMATE

- ELECTRICAL JUNCTION BOX (SUPPLIED WITH 6" LEADS OR POWER CORD).
- REMOTE FLOOR SINK & UTILITIES ACCESS AREA.
- LOCATION OF DRAIN TUBE FOR REMOTE REF. ONLY (SUPPLIED WITH 3/4" OR 1 1/2" PVC TUBE).
- SELF-CONTAINED CASE SERVICE ACCESS AREA.
- REFRIGERATION LINE CONNECTION.
- DRY CASE SERVICE ACCESS AREA.

## Model Technical Specifications

Model Technical Specifications																
Model	L"	L1"	L2"	System Circuit Volts			Phs	Freq	Amps ***	Watts	Wires	NEMA Plug	SST	Conv. Rack RTU/H	Para. Rack RTU/H	Est Wt
B3632	34.00	36.75	3.13	Remote (DX)	Circuit #1	110-120	1	60	1.13	99	2+G	Leads Multiple	20.00	4320	4000	850
				Remote (GLYCOL 35%)	Circuit #1	110-120	1	60	1.13	99	2+G	Leads Multiple	20.00	4320	4000	
B4732	45.00	47.75	3.13	Remote (DX)	Circuit #1	110-120	1	60	1.47	139	2+G	Leads Multiple	20.00	5918	5480	900
B5932	57.00	59.75	3.13	Remote (DX)	Circuit #1	110-120	1	60	1.52	98	2+G	Leads Multiple	20.00	7042	6520	1,100
				Remote (GLYCOL 35%)	Circuit #1	110-120	1	60	1.52	98	2+G	Leads Single	20.00	7042	6520	
B7132	69.00	71.75	3.13	Remote (DX)	Circuit #1	110-120	1	60	2.36	238	2+G	Leads Multiple	20.00	8618	7980	1,300

\*\*\* Does not include electric defrost on freezer models.

## Regulatory Approvals:

All Models  
 Accordance with AHRI Std 1200  
 ETL Listed to UL 471  
 ETL Listed to CAN/CSA 22.2 No. 120  
 ETL Sanitation to NSF/ANSI 7



In Accordance with  
**AHRI Std 1200**

**DOE 2017**  
 Energy Efficiency  
 Compliant

## Important Notes:

- 1) ELECTRICAL NOTE: If GFCI is required, a GFCI breaker MUST be used in lieu of a GFCI receptacle
- 2) Performance issues (product temperatures, water on floor, etc.) caused by adverse conditions are not covered by warranty.
- 3) Keep unit at least 15' from exterior doors, overhead HVAC vents, or any air curtain disruption.
- 4) End panels must be tightly joined or kept at least 6" away from any structure to prevent condensation.
- 5) Do not expose unit to direct sunlight or any heat source (ovens, fryers, etc.).
- 6) Tile floors, low ceilings, or small rooms will increase noise level.
- 7) Rear Door option changes air discharge to lower rear.
- 8) Compressor air lower front intake and upper front discharge. Front panel cannot be blocked.

**⚠ WARNING:** This product can expose you to chemicals, including Urethane (Ethyl Carbamate), which are known to the State of California to cause cancer and birth defects or other reproductive harm. For more information go to [www.P65Warnings.ca.gov](http://www.P65Warnings.ca.gov).