

		NM7255RSSV
ITEM#	DESCRIPTION	SCC P/N
1	PANEL BASE FRONT	CONTACT SCC
2	FRONT PANEL	CONTACT SCC
3	DECK PAN	CONTACT SCC
4	CUSTOMER LEFT HAND END PANEL	CONTACT SCC
5	CUSTOMER RIGHT HAND END PANEL	CONTACT SCC
6	LED LIGHT	SEE NOTES
7	LED LIGHT CLIP	20-91194
8	EVAPORATOR PACKAGE	SHEET 4
9	PANEL TOP	CONTACT SCC
10	PANEL BACK ASSEMBLY	CONTACT SCC
11	CONDENSING PACKAGE	SHEET 2
12	ELECTRIC BOX	SHEET 3
13	SHELF ASSEMBLY	CONTACT SCC

NOTE: INFORMATION IS SUBJECT TO CHANGE AT ANY TIME.

DRAWINGS REPRESENT CASES BUILT AFTER JANUARY 2020

OLDER CASES WILL NEED PART INFORMATION CONFIRMED BY THE MANUFACTURER

PROPRIETARY

These drawings and specifications are confidential and proprietary to Structural Concepts Corporation and neither the drawings themselves nor any information thereon may be used without written permission of Structural Concepts Corporation.

REV. LEVEL	CHANGE DESCRIPTION
A	R.F.PRODUCTION

- LIGHT OPTIONS:
- 3500K FROSTED: 20-92812
 - 3500K CLEAR: 20-92727
 - 4000K FROSTED: 20-92871
 - 4000K CLEAR: 20-92784

DXF LEVEL	DFT. RESP.	ENG. RESP.	ECN NUMBER	DATE
	RYB			07/11/24

Structural Concepts®

888 E. PORTER ROAD, MUSKEGON, MI 49441
PHONE: (231) 798-8888, WWW.STRUCTURALCONCEPTS.COM

DESCRIPTION: NM7255RSSV REPLACEMENT PARTS

MATERIAL: SEE NOTES

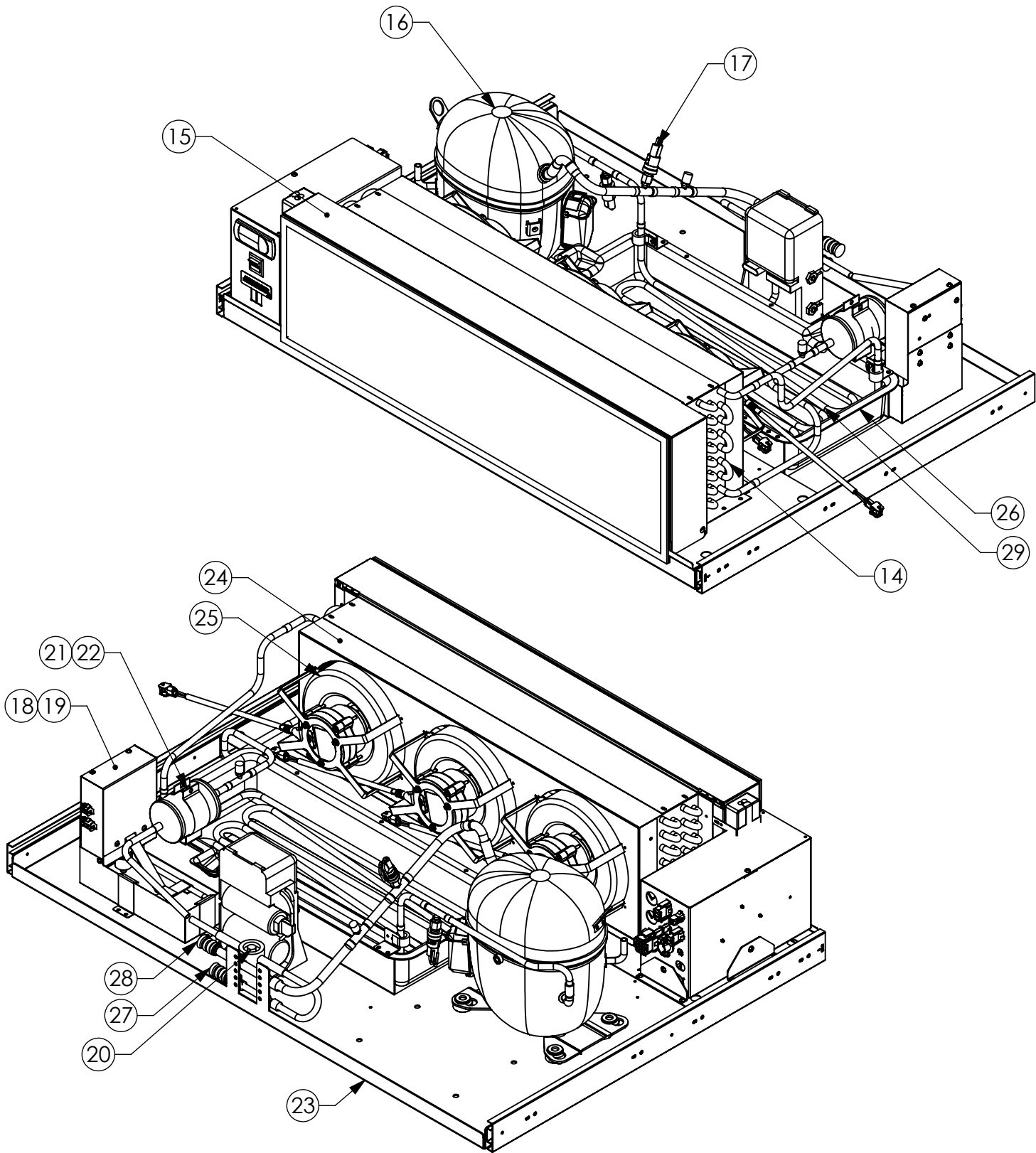
DIMENSIONS ARE IN INCHES (UNLESS SPECIFIED). TOLERANCES: .00 +/- .03, .000 +/- .015, ANGLES +/- 1 DEG., [GLASS: .00 +/- .06, ANGLES +/- 1 DEG.]

SCALE NTS

ORIG. DATE 07/11/24

SHEET SIZE B

DWG. NO. A508269



		NM7255RSSV
ITEM#	DESCRIPTION	SCC P/N
14	CONDENSING COIL	70949
15	CLEAN SWEEP COVER	20-08848
16	COMPRESSOR	20-69053
17	HIGH/LOW PRESSURE SWITCH	20-51808
18	HOT GAS OVER FLOW PAN	21-16615
19	HOT GAS OVER FLOW POWER HEAD	21-17102
20	SIGHT GLASS	72035
21	FILTER DRIER	73126
22	FILTER DRIER CLAMP	38964
23	CONDENSING PAN	20-98025PB
24	CONDENSING FAN SHROUD	21-17192
25	CONDENSING FAN ASSEMBLY	20-99134
26	CONDENSATE PAN	20-03435
27	3/8" LIQUID LINE ZOOMLOCK	72793
28	1/2" SUCITON LINE ZOOMLOCK	72644
29	HOT CASE SERPENTINE LOOP	72680
30	CONDENSING PACKAGE HARNESS	21-08910

NOTE: INFORMATION IS SUBJECT TO CHANGE AT ANY TIME.

DRAWINGS REPRESENT CASES BUILT AFTER JANUARY 2020

OLDER CASES WILL NEED PART INFORMATION CONFIRMED BY THE MANUFACTURER

PROPRIETARY

These drawings and specifications are confidential and proprietary to Structural Concepts Corporation and neither the drawings themselves nor any information thereon may be used without written permission of Structural Concepts Corporation.

REV. LEVEL	CHANGE DESCRIPTION	DXF LEVEL	DFT. RESP.	ENG. RESP.	ECN NUMBER	DATE	<div>Structural Concepts®</div> <div>888 E. PORTER ROAD, MUSKEGON, MI 49441 PHONE: (231) 798-8888, WWW.STRUCTURALCONCEPTS.COM</div> <div>DESCRIPTION: NM7255RSSV REPLACEMENT PARTS</div> <div>MATERIAL: SEE BILLS</div> <div>DIMENSIONS ARE IN INCHES (UNLESS SPECIFIED). TOLERANCES: .00 +/- .03, .000 +/- .015, ANGLES +/- 1 DEG., [GLASS: .00 +/- .06, ANGLES +/- 1 DEG.]</div> <div>SCALE NTS</div> <div>ORIG. DATE 07/11/24</div> <div>ORIG. ENG. RESP. bbirdsell</div> <div>CHECKED BY</div> <div>SHEET SIZE B</div> <div>DWG. NO. A508269</div>	
A	R.F.PRODUCTION		RYB			07/11/24		

