

Technical Information

Reveal® - Refrigerated Service Case

Structural Concepts®

DELIVERING FRESH. ALWAYS.™

DIMENSIONS / SHIPPING

Model	L"	L1"	L2"	Est Wt (lbs)
NR3655RSV	N/A	35.750	7.500	900
NR4855RSV	N/A	47.750	7.500	1,000
NR6055RSV	N/A	59.750	7.500	1,100
NR7255RSV	N/A	71.750	7.500	1,200

ELECTRICAL

Model	System Circuit Volts				Ph	Frq	Rated Load Amps	Min Cir Amps	Max OCP Amps	Watts	Wires	NEMA Plug	Amps Lights	Amps Fans	Amps Anti-Sweats	Amps Misc/Refr/Heat
NR3655RSV	Remote (DX)	Circuit #1	110-120	1	60	1.08	15	15	39	2+G	Leads Single	0.70	0.30			0.08
	Remote (GLYCOL)	Circuit #1	110-120	1	60	1.00	15	15	29	2+G	Leads Single	0.70	0.30			N/A
	Remote (DX)	Circuit #1	110-120	1	60	1.08	15	15	39	2+G	Leads Single	0.70	0.30			0.08
	Self-Contained (R290)	Circuit #1	110-120	1	60	10.73	15	15	972	2+G	5-15P or L5-15P	N/A	0.45	3.96		6.32
NR4855RSV	Remote (DX)	Circuit #1	110-120	1	60	1.08	15	15	46	2+G	Leads Single	0.70	0.30			0.08
	Remote (GLYCOL)	Circuit #1	110-120	1	60	1.00	15	15	36	2+G	Leads Single	0.70	0.30			N/A
	Remote (DX)	Circuit #1	110-120	1	60	1.08	15	15	46	2+G	Leads Single	0.70	0.30			0.08
	Self-Contained (R290)	Circuit #1	110-120	1	60	11.18	15	15	1,007	2+G	5-15P or L5-15P	N/A	0.90	3.96		6.32
NR6055RSV	Remote (DX)	Circuit #1	110-120	1	60	1.38	15	15	66	2+G	Leads Single	0.70	0.60			0.08
	Remote (DX)	Circuit #1	110-120	1	60	1.38	15	15	66	2+G	Leads Single	0.70	0.60			0.08
	Self-Contained (R290)	Circuit #1	110-120	1	60	11.18	15	15	1,020	2+G	5-15P or L5-15P	N/A	0.90	3.96		6.32
NR7255RSV	Remote (DX)	Circuit #1	110-120	1	60	1.38	15	15	73	2+G	Leads Single	0.70	0.60			0.08
	Remote (GLYCOL)	Circuit #1	110-120	1	60	1.30	15	15	63	2+G	Leads Single	0.70	0.60			N/A
	Remote (DX)	Circuit #1	110-120	1	60	1.38	15	15	73	2+G	Leads Single	0.70	0.60			0.08
	Self-Contained (R290)	Circuit #1	110-120	1	60	15.48	20	20	1,561	2+G	5-20P or L5-20P	N/A	0.90	3.96		10.62

REFRIGERATION

Model	Zone	Section	System	Envt	REMOTE REFRIGERATION					GLYCOL / R744 REFRIGERATION			
					SST (°F)	Conv. Rack BTUH	Para. Rack BTUH	Defrost Interval (Hrs)	Defrost Duration	Total GPM	Pressure Drop (psi)	Concent (%)	Liquid Temp (°F)
NR3655RSV	All	Refrigerator	Remote-DX	Type II	20	1,188	1,100	4.00	30.00	N/A	N/A	N/A	N/A
	All	Main	Remote-Glycol	Type II	N/A	1,188	1,100	4.00	45.00	0.30	0.30	35%	20.00
	All	Refrigerator	Remote-DX	Type I	20	1,058	980	4.00	30.00	N/A	N/A	N/A	N/A
	All	Main	Self-Contained-R290	Type II	N/A	N/A	N/A	N/A	N/A	N/A	N/A	N/A	N/A
NR4855RSV	All	Refrigerator	Remote-DX	Type II	20	1,534	1,420	4.00	30.00	N/A	N/A	N/A	N/A
	All	Refrigerator	Remote-Glycol	Type II	N/A	1,534	1,420	4.00	45.00	0.25	1.55	35%	20.00
	All	Refrigerator	Remote-DX	Type I	20	1,361	1,260	4.00	30.00	N/A	N/A	N/A	N/A
	All	Main	Self-Contained-R290	Type II	N/A	N/A	N/A	N/A	N/A	N/A	N/A	N/A	N/A
NR6055RSV	All	Refrigerator	Remote-DX	Type II	24	1,879	1,740	4.00	25.00	N/A	N/A	N/A	N/A
	All	Refrigerator	Remote-DX	Type I	24	1,663	1,540	4.00	25.00	N/A	N/A	N/A	N/A
	All	Main	Self-Contained-R290	Type II	N/A	N/A	N/A	N/A	N/A	N/A	N/A	N/A	N/A
NR7255RSV	All	Refrigerator	Remote-DX	Type II	20	2,203	2,040	4.00	30.00	N/A	N/A	N/A	N/A
	All	Main	Remote-Glycol	Type II	N/A	2,203	2,040	4.00	45.00	0.50	1.00	35%	20.00
	All	Refrigerator	Remote-DX	Type I	20	1,966	1,820	4.00	30.00	N/A	N/A	N/A	N/A
	All	Main	Self-Contained-R290	Type II	N/A	N/A	N/A	N/A	N/A	N/A	N/A	N/A	N/A

INTENDED ENVIRONMENT

Type II - Designed to operate in ambient conditions of 80°F and 55% relative humidity unless noted otherwise under Envt above.

WARMEST AVERAGE PRODUCT TEMP & INTENDED USE OF ZONES

Zone	Temp (°F)	Intended Use
1	40	Unpackaged refrigerated products

IMPORTANT NOTES

- 1) ELECTRICAL NOTE: If GFCI is required, a GFCI breaker MUST be used in lieu of a GFCI receptacle
- 2) Back side of counter must be open or vented the full length of the unit to allow proper ventilation for the refrigeration system.
- 3) Glass warranty only applicable to first point of delivery.
- 4) Compressor air intake from rear and out front panel at toe kick. Front panel cannot be blocked.

Technical Information

Reveal® - Refrigerated Service Case

REGULATORY	
All Models	Accordance with AHRI Std 1200 ETL Listed to UL 471 ETL Listed to CAN/CSA 22.2 No. 120 ENERGY STAR® ETL Sanitation to NSF/ANSI 7

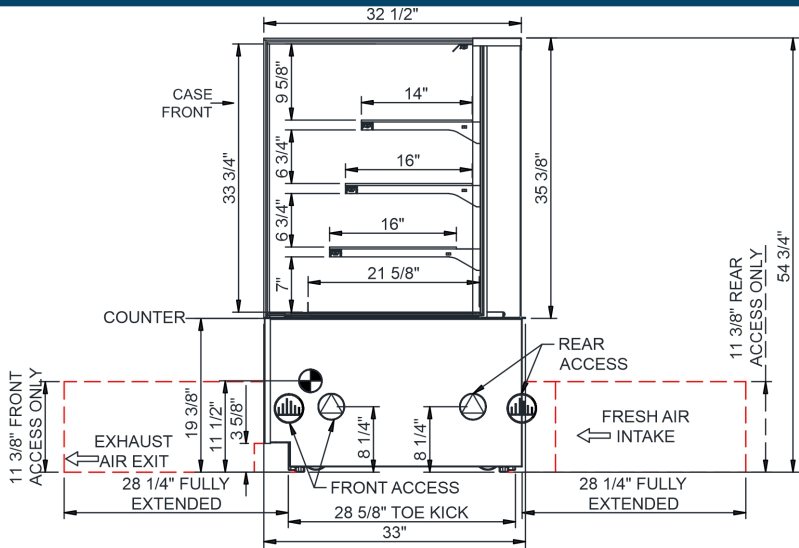


NOTE: ALL DIMENSIONS APPROXIMATE

-  ELECTRICAL JUNCTION BOX (SUPPLIED WITH 6" LEADS OR POWER CORD).
-  REFRIGERATION LINE CONNECTION.
-  SELF-CONTAINED CASE SERVICE ACCESS AREA.
-  LOCATION OF DRAIN TUBE FOR REMOTE REF. ONLY (SUPPLIED WITH 3/4" OR 1 1/2" PVC TUBE).
-  REMOTE FLOOR SINK & UTILITIES ACCESS AREA.
-  DRY CASE SERVICE ACCESS AREA.

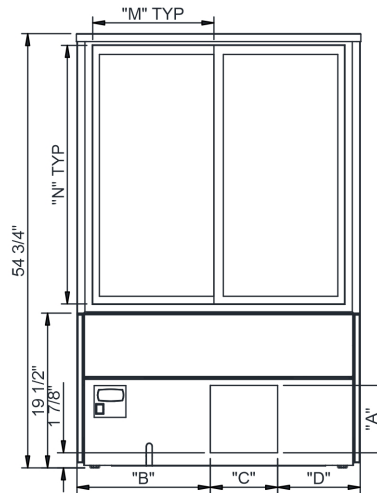
Technical Information

Reveal® - Refrigerated Service Case



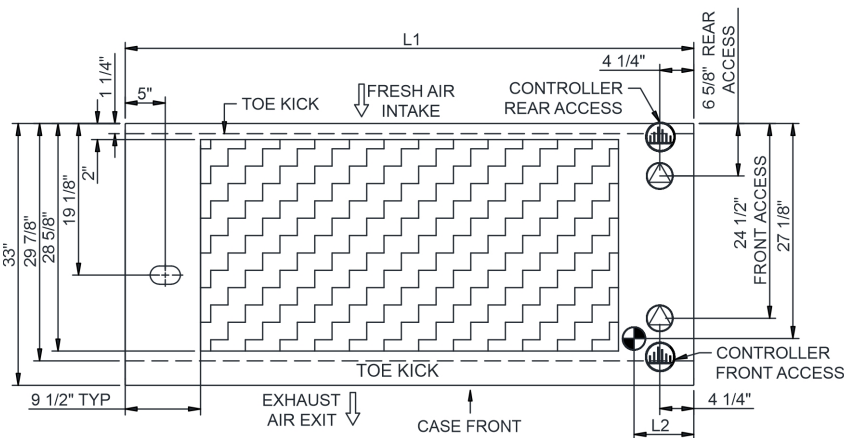
NOTES:

1. 11 3/8" TALL, FULL WIDTH OF CASE OPENING IN CABINET OR COUNTER IS REQUIRED TO PULL OUT REFRIGERATION SYSTEM.
2. BACK OF COUNTER / CABINET MUST BE VENTED PROPERLY FOR ADEQUATE AIRFLOW TO CONDENSER.
3. **REPRESENTS REAR PULLOUT REFRIGERATION. AIR FLOW INTAKE AND EXIT DETAILS ARE REVERSED WITH FRONT PULLOUT REFRIGERATION OPTION.
4. SELF-CONTAINED ACCESS ONLY BY PULLING OUT CONDENSER UNIT.
5. 4" OPEN AREA CLEARANCE REQUIRED FOR AIR FLOW FRONT AND REAR OF CASE.



REAR VIEW

	"A"	"B"	"C"	"D"		"M"	"N"
NR3655RSV	8 1/2"	16 3/4"	8 1/2"	10 1/2"	NR3655RSV	14 1/2"	32 5/8"
NR4855RSV	8 1/2"	28 3/4"	8 1/2"	10 1/2"	NR4855RSV	20 1/2"	32 5/8"
NR6055RSV	8 1/2"	40 3/4"	8 1/2"	10 1/2"	NR6055RSV	26 1/2"	32 5/8"
NR7255RSV	8 1/2"	52 3/4"	8 1/2"	10 1/2"	NR7255RSV	32 1/2"	32 5/8"



NOTE: ALL DIMENSIONS APPROXIMATE

- ELECTRICAL JUNCTION BOX (SUPPLIED WITH 6" LEADS OR POWER CORD).
- LOCATION OF DRAIN TUBE FOR REMOTE REF. ONLY (SUPPLIED WITH 3/4" OR 1 1/2" PVC TUBE).

- REFRIGERATION LINE CONNECTION.
- REMOTE FLOOR SINK & UTILITIES ACCESS AREA.

- SELF-CONTAINED CASE SERVICE ACCESS AREA.
- DRY CASE SERVICE ACCESS AREA.