

Technical Information

Reveal® - Refrigerated Service Slide In Counter Case

Structural Concepts®

DELIVERING FRESH. ALWAYS.™

DIMENSIONS / SHIPPING

Model	L"	L1"	L2"	Est Wt (lbs)
NE3620RSV	N/A	35.750	7.500	N/A
NE4820RSV	N/A	47.750	7.500	N/A
NE6020RSV	N/A	59.750	7.500	N/A
NE7220RSV	N/A	71.750	7.500	N/A

ELECTRICAL

Model	System Circuit Volts			Ph	Frq	Rated Load Amps	Min Cir Amps	Max OCP Amps	Watts	Wires	NEMA Plug	Amps Lights	Amps Fans	Amps Anti-Sweats	Amps Misc/Refr/Heat
NE3620RSV	Remote (DX)	Circuit #1	110-120	1	60	1.08	15	15	32	2+G	Leads Single	0.70	0.30		0.08
	Remote (DX)	Circuit #1	110-120	1	60	1.08	15	15	32	2+G	Leads Single	0.70	0.30		0.08
	Self-Contained (R290)	Circuit #1	110-120	1	60	10.73	15	15	957	2+G	5-15P or L5-15P	N/A	0.45	3.96	6.32
NE4820RSV	Remote (DX)	Circuit #1	110-120	1	60	1.08	15	15	35	2+G	Leads Single	0.70	0.30		0.08
	Remote (DX)	Circuit #1	110-120	1	60	1.08	15	15	35	2+G	Leads Single	0.70	0.30		0.08
	Self-Contained (R290)	Circuit #1	110-120	1	60	11.18	15	15	985	2+G	5-15P or L5-15P	N/A	0.90	3.96	6.32
NE6020RSV	Remote (DX)	Circuit #1	110-120	1	60	1.38	15	15	52	2+G	Leads Single	0.70	0.60		0.08
	Remote (DX)	Circuit #1	110-120	1	60	1.38	15	15	52	2+G	Leads Single	0.70	0.60		0.08
	Self-Contained (R290)	Circuit #1	110-120	1	60	11.18	15	15	991	2+G	5-15P or L5-15P	N/A	0.90	3.96	6.32
NE7220RSV	Remote (DX)	Circuit #1	110-120	1	60	1.38	15	15	55	2+G	Leads Single	0.70	0.60		0.08
	Remote (DX)	Circuit #1	110-120	1	60	1.38	15	15	55	2+G	Leads Single	0.70	0.60		0.08
	Self-Contained (R290)	Circuit #1	110-120	1	60	11.18	15	15	998	2+G	5-15P or L5-15P	N/A	0.90	3.96	6.32

REFRIGERATION

Model	Zone	Section	System	Envt	REMOTE REFRIGERATION					GLYCOL / R744 REFRIGERATION			
					SST (°F)	Conv. Rack BTUH	Para. Rack BTUH	Defrost Interval (Hrs)	Defrost Duration	Total GPM	Pressure Drop (psi)	Concent (%)	Liquid Temp (°F)
NE3620RSV	All	Refrigerator	Remote-DX	Type II	24	864	800	4.00	30.00	N/A	N/A	N/A	N/A
	All	Refrigerator	Remote-DX	Type I	24	778	720	4.00	30.00	N/A	N/A	N/A	N/A
	All	Main	Self-Contained-R290	Type II	N/A	N/A	N/A	N/A	N/A	N/A	N/A	N/A	N/A
NE4820RSV	All	Refrigerator	Remote-DX	Type II	24	1,123	1,040	4.00	30.00	N/A	N/A	N/A	N/A
	All	Refrigerator	Remote-DX	Type I	24	994	920	4.00	30.00	N/A	N/A	N/A	N/A
	All	Main	Self-Contained-R290	Type II	N/A	N/A	N/A	N/A	N/A	N/A	N/A	N/A	N/A
NE6020RSV	All	Refrigerator	Remote-DX	Type II	20	1,382	1,280	4.00	25.00	N/A	N/A	N/A	N/A
	All	Refrigerator	Remote-DX	Type I	20	1,231	1,140	4.00	25.00	N/A	N/A	N/A	N/A
	All	Main	Self-Contained-R290	Type II	N/A	N/A	N/A	N/A	N/A	N/A	N/A	N/A	N/A
NE7220RSV	All	Refrigerator	Remote-DX	Type II	20	1,642	1,520	4.00	30.00	N/A	N/A	N/A	N/A
	All	Refrigerator	Remote-DX	Type I	20	1,469	1,360	4.00	30.00	N/A	N/A	N/A	N/A
	All	Main	Self-Contained-R290	Type II	N/A	N/A	N/A	N/A	N/A	N/A	N/A	N/A	N/A

INTENDED ENVIRONMENT

Type II - Designed to operate in ambient conditions of 80°F and 55% relative humidity unless noted otherwise under Envt above.

WARMEST AVERAGE PRODUCT TEMP & INTENDED USE OF ZONES

Zone	Temp (°F)	Intended Use
1	40	Unpackaged refrigerated products

IMPORTANT NOTES

- 1) ELECTRICAL NOTE: If GFCI is required, a GFCI breaker MUST be used in lieu of a GFCI receptacle
- 2) Back side of counter must be open or vented the full length of the unit to allow proper ventilation for the refrigeration system.
- 3) A vent in the front of the counter recommended to help dissipate compressor heat.
- 4) Rear Access Standard - Counter must be configured to allow air to be drawn in the rear and discharged out the front.
- 5) Front Access Option - Counter must be configured to allow air to be drawn in the front and discharged out the rear.
- 6) Unit can intake and discharge from rear with optional rear vented panel.
- 7) 19.25" minimum space required beneath counter surface.
- 8) Glass warranty only applicable to first point of delivery.



Technical Information

Reveal® - Refrigerated Service Slide In Counter Case

REGULATORY	
All Models	Accordance with AHRI Std 1200 ETL Listed to UL 471 ETL Listed to CAN/CSA 22.2 No. 120 ENERGY STAR® ETL Sanitation to NSF/ANSI 7

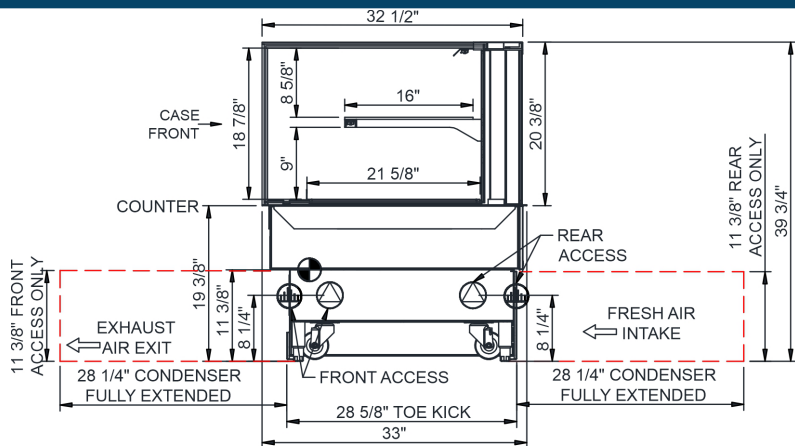


NOTE: ALL DIMENSIONS APPROXIMATE

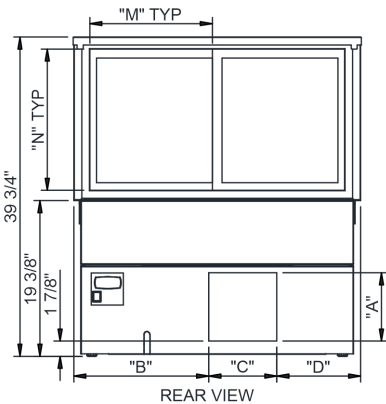
-  ELECTRICAL JUNCTION BOX (SUPPLIED WITH 6" LEADS OR POWER CORD).
-  REFRIGERATION LINE CONNECTION.
-  SELF-CONTAINED CASE SERVICE ACCESS AREA.
-  LOCATION OF DRAIN TUBE FOR REMOTE REF. ONLY (SUPPLIED WITH 3/4" OR 1 1/2" PVC TUBE).
-  REMOTE FLOOR SINK & UTILITIES ACCESS AREA.
-  DRY CASE SERVICE ACCESS AREA.

Technical Information

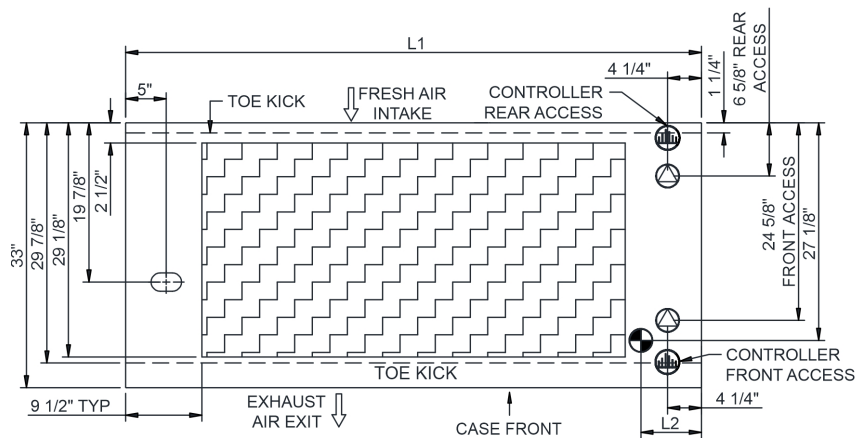
Reveal® - Refrigerated Service Slide In Counter Case



- NOTES:
- 1. 11 3/8" TALL, FULL WIDTH OF CASE OPENING IN CABINET OR COUNTER IS REQUIRED TO PULL OUT REFRIGERATION SYSTEM.
 - 2. SEE DESIGN GUIDE FOR CUTOUT SIZE IN CABINET FOR CASE TO DROP INTO.
 - 3. BACK OF COUNTER / CABINET MUST BE VENTED PROPERLY FOR ADEQUATE AIRFLOW TO CONDENSER.
 - 4. **REPRESENTS REAR PULLOUT REFRIGERATION. AIR FLOW INTAKE AND EXIT DETAILS ARE REVERSED WITH FRONT PULLOUT REFRIGERATION OPTION.
 - 5. SELF-CONTAINED ACCESS ONLY BY PULLING OUT CONDENSER UNIT.
 - 6. SEE "COUNTER INSTALLATION GUIDE" FOR AIR FLOW REQUIREMENTS.



	"A"	"B"	"C"	"D"		"M"	"N"
NE3620RSV	8 1/2"	16 3/4"	8 1/2"	10 1/2"	NE3620RSV	15 3/8"	17 3/4"
NE4820RSV	8 1/2"	28 3/4"	8 1/2"	10 1/2"	NE4820RSV	21 3/8"	17 3/4"
NE6020RSV	8 1/2"	40 3/4"	8 1/2"	10 1/2"	NE6020RSV	27 3/8"	17 3/4"
NE7220RSV	8 1/2"	52 3/4"	8 1/2"	10 1/2"	NE7220RSV	33 3/8"	17 3/4"



NOTE: ALL DIMENSIONS APPROXIMATE

-  ELECTRICAL JUNCTION BOX (SUPPLIED WITH 6" LEADS OR POWER CORD).
-  REFRIGERATION LINE CONNECTION.
-  SELF-CONTAINED CASE SERVICE ACCESS AREA.
-  LOCATION OF DRAIN TUBE FOR REMOTE REF. ONLY (SUPPLIED WITH 3/4" OR 1 1/2" PVC TUBE).
-  REMOTE FLOOR SINK & UTILITIES ACCESS AREA.
-  DRY CASE SERVICE ACCESS AREA.