

Technical Information

Reveal® - Refrigerated Service Slide In Counter Case

Structural Concepts®

DELIVERING FRESH. ALWAYS.™

DIMENSIONS / SHIPPING

Model	L"	L1"	L2"	Est Wt (lbs)
NE3627RSV	N/A	35.750	7.500	N/A
NE4827RSV	N/A	47.750	7.500	N/A
NE6027RSV	N/A	59.750	7.500	N/A
NE7227RSV	N/A	71.750	7.500	N/A

ELECTRICAL

Model	System Circuit Volts				Ph	Frq	Rated Load Amps	Min Cir Amps	Max OCP Amps	Watts	Wires	NEMA Plug	Amps Lights	Amps Fans	Amps Anti-Sweats	Amps Misc/Refrig/Heat
NE3627RSV	Remote (DX)	Circuit #1	110-120	1	60	1.08	15	15	35	2+G	Leads Single	0.70	0.30			0.08
	Remote (DX)	Circuit #1	110-120	1	60	1.08	15	15	35	2+G	Leads Single	0.70	0.30			0.08
	Self-Contained (R290)	Circuit #1	110-120	1	60	10.73	15	15	965	2+G	5-15P or L5-15P	N/A	0.45	3.96		6.32
NE4827RSV	Remote (DX)	Circuit #1	110-120	1	60	1.08	15	15	41	2+G	Leads Single	0.70	0.30			0.08
	Remote (DX)	Circuit #1	110-120	1	60	1.08	15	15	41	2+G	Leads Single	0.70	0.30			0.08
	Self-Contained (R290)	Circuit #1	110-120	1	60	11.18	15	15	996	2+G	5-15P or L5-15P	N/A	0.90	3.96		6.32
NE6027RSV	Remote (DX)	Circuit #1	110-120	1	60	1.38	15	15	59	2+G	Leads Single	0.70	0.60			0.08
	Remote (DX)	Circuit #1	110-120	1	60	1.38	15	15	59	2+G	Leads Single	0.70	0.60			0.08
	Self-Contained (R290)	Circuit #1	110-120	1	60	11.18	15	15	1,006	2+G	5-15P or L5-15P	N/A	0.90	3.96		6.32
NE7227RSV	Remote (DX)	Circuit #1	110-120	1	60	1.38	15	15	64	2+G	Leads Single	0.70	0.60			0.08
	Remote (DX)	Circuit #1	110-120	1	60	1.38	15	15	64	2+G	Leads Single	0.70	0.60			0.08
	Self-Contained (R290)	Circuit #1	110-120	1	60	15.48	20	20	1,543	2+G	5-20P or L5-20P	N/A	0.90	3.96		10.62

REFRIGERATION

Model	Zone	Section	System	Envt	REMOTE REFRIGERATION					GLYCOL / R744 REFRIGERATION			
					SST (°F)	Conv. Rack BTUH	Para. Rack BTUH	Defrost Interval (Hrs)	Defrost Duration	Total GPM	Pressure Drop (psi)	Concent (%)	Liquid Temp (°F)
NE3627RSV	All	Refrigerator	Remote-DX	Type II	24	1,015	940	4.00	30.00	N/A	N/A	N/A	N/A
	All	Refrigerator	Remote-DX	Type I	24	907	840	4.00	30.00	N/A	N/A	N/A	N/A
	All	Main	Self-Contained-R290	Type II	N/A	N/A	N/A	N/A	N/A	N/A	N/A	N/A	N/A
NE4827RSV	All	Refrigerator	Remote-DX	Type II	24	1,318	1,220	4.00	30.00	N/A	N/A	N/A	N/A
	All	Refrigerator	Remote-DX	Type I	24	1,166	1,080	4.00	30.00	N/A	N/A	N/A	N/A
	All	Main	Self-Contained-R290	Type II	N/A	N/A	N/A	N/A	N/A	N/A	N/A	N/A	N/A
NE6027RSV	All	Refrigerator	Remote-DX	Type II	20	1,620	1,500	4.00	25.00	N/A	N/A	N/A	N/A
	All	Refrigerator	Remote-DX	Type I	20	1,447	1,340	4.00	25.00	N/A	N/A	N/A	N/A
	All	Main	Self-Contained-R290	Type II	N/A	N/A	N/A	N/A	N/A	N/A	N/A	N/A	N/A
NE7227RSV	All	Refrigerator	Remote-DX	Type II	20	1,922	1,780	4.00	25.00	N/A	N/A	N/A	N/A
	All	Refrigerator	Remote-DX	Type I	20	1,706	1,580	4.00	25.00	N/A	N/A	N/A	N/A
	All	Main	Self-Contained-R290	Type II	N/A	N/A	N/A	N/A	N/A	N/A	N/A	N/A	N/A

INTENDED ENVIRONMENT

Type II - Designed to operate in ambient conditions of 80°F and 55% relative humidity unless noted otherwise under Envt above.

WARMEST AVERAGE PRODUCT TEMP & INTENDED USE OF ZONES

Zone	Temp (°F)	Intended Use
1	40	Unpackaged refrigerated products

IMPORTANT NOTES

- 1) ELECTRICAL NOTE: If GFCI is required, a GFCI breaker MUST be used in lieu of a GFCI receptacle
- 2) Back side of counter must be open or vented the full length of the unit to allow proper ventilation for the refrigeration system.
- 3) A vent in the front of the counter recommended to help dissipate compressor heat.
- 4) Rear Access Standard - Counter must be configured to allow air to be drawn in the rear and discharged out the front.
- 5) Front Access Option - Counter must be configured to allow air to be drawn in the front and discharged out the rear.
- 6) Unit can intake and discharge from rear with optional rear vented panel.
- 7) 19.25" minimum space required beneath counter surface.
- 8) Glass warranty only applicable to first point of delivery.

Technical Information

Reveal® - Refrigerated Service Slide In Counter Case

REGULATORY	
All Models	Accordance with AHRI Std 1200 ETL Listed to UL 471 ETL Listed to CAN/CSA 22.2 No. 120 ENERGY STAR® ETL Sanitation to NSF/ANSI 7

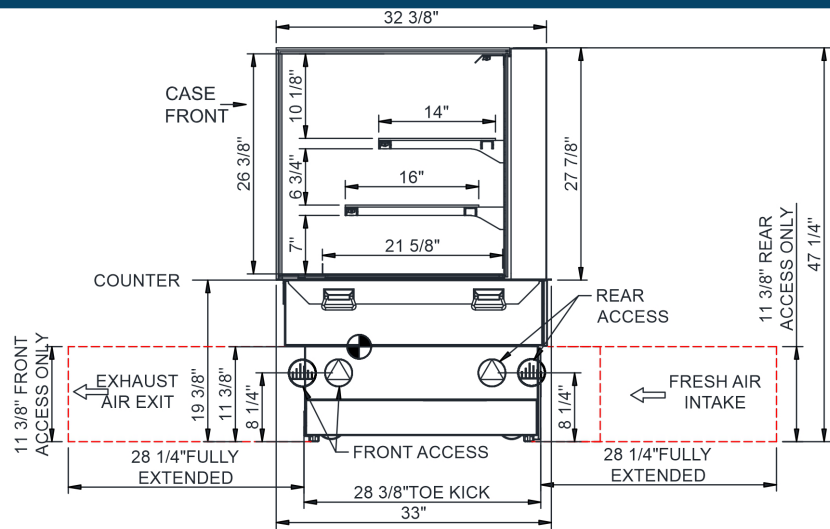


NOTE: ALL DIMENSIONS APPROXIMATE

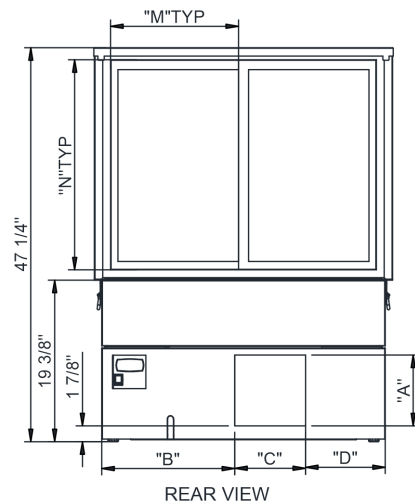
-  ELECTRICAL JUNCTION BOX (SUPPLIED WITH 6" LEADS OR POWER CORD).
-  REFRIGERATION LINE CONNECTION.
-  SELF-CONTAINED CASE SERVICE ACCESS AREA.
-  LOCATION OF DRAIN TUBE FOR REMOTE REF. ONLY (SUPPLIED WITH 3/4" OR 1 1/2" PVC TUBE).
-  REMOTE FLOOR SINK & UTILITIES ACCESS AREA.
-  DRY CASE SERVICE ACCESS AREA.

Technical Information

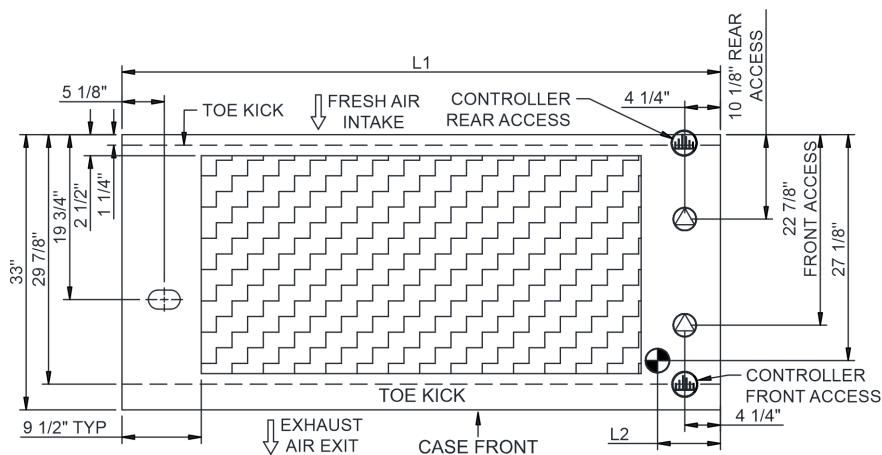
Reveal® - Refrigerated Service Slide In Counter Case



- NOTES:
- 1. 11 3/8" TALL, FULL WIDTH OF CASE OPENING IN CABINET OR COUNTER IS REQUIRED TO PULL OUT REFRIGERATION SYSTEM.
 - 2. SEE DESIGN GUIDE FOR CUTOUT SIZE IN CABINET FOR CASE TO DROP INTO.
 - 3. BACK OF COUNTER / CABINET MUST BE VENTED PROPERLY FOR ADEQUATE AIRFLOW TO CONDENSER.
 - 4. **REPRESENTS REAR PULLOUT REFRIGERATION. AIR FLOW INTAKE AND EXIT DETAILS ARE REVERSED WITH FRONT PULLOUT REFRIGERATION OPTION.
 - 5. SELF-CONTAINED ACCESS ONLY BY PULLING OUT CONDENSER UNIT.
 - 6. SEE "COUNTER INSTALLATION GUIDE" FOR AIR FLOW REQUIREMENTS.



	"A"	"B"	"C"	"D"		"M"	"N"
NE3627RSV	8 1/2"	16"	8 1/2"	9 5/8"	NR3647RSV	15 3/8"	25 1/4"
NE4827RSV	8 1/2"	28"	8 1/2"	9 5/8"	NR4847RSV	21 3/8"	25 1/4"
NE6027RSV	8 1/2"	40"	8 1/2"	9 5/8"	NR6047RSV	27 3/8"	25 1/4"
NE7227RSV	8 1/2"	52"	8 1/2"	9 5/8"	NR7247RSV	33 3/8"	25 1/4"



NOTE: ALL DIMENSIONS APPROXIMATE

- ELECTRICAL JUNCTION BOX (SUPPLIED WITH 6" LEADS OR POWER CORD).
- REFRIGERATION LINE CONNECTION.
- SELF-CONTAINED CASE SERVICE ACCESS AREA.
- LOCATION OF DRAIN TUBE FOR REMOTE REF. ONLY (SUPPLIED WITH 3/4" OR 1 1/2" PVC TUBE).
- REMOTE FLOOR SINK & UTILITIES ACCESS AREA.
- DRY CASE SERVICE ACCESS AREA.