

Technical Information

Reveal® - Non-Refrigerated Self-Service Slide In Counter Case

Structural Concepts®

DELIVERING FRESH. ALWAYS.™

DIMENSIONS / SHIPPING

| Model | L" | L1" | L2" | Est Wt (lbs) |
|------------|-----|--------|-------|--------------|
| NE3635DSSV | N/A | 35.750 | 0.000 | N/A |
| NE4835DSSV | N/A | 47.750 | 0.000 | N/A |

ELECTRICAL

| Model | System Circuit Volts | | | Ph | Frq | Rated Load Amps | Min Cir Amps | Max OCP Amps | Watts | Wires | NEMA Plug | Amps Lights | Amps Fans | Amps Anti-Sweats | Amps Misc/Refrig/Heat |
|------------|----------------------|------------|---------|----|-----|-----------------|--------------|--------------|-------|-------|-----------------|-------------|-----------|------------------|-----------------------|
| NE3635DSSV | Ambient/Lights (N/A) | Circuit #1 | 110-120 | 1 | 60 | 0.70 | 15 | 15 | 15 | 2+G | 5-15P or L5-15P | 0.70 | N/A | N/A | N/A |
| NE4835DSSV | Ambient/Lights (N/A) | Circuit #1 | 110-120 | 1 | 60 | 0.70 | 15 | 15 | 22 | 2+G | 5-15P or L5-15P | 0.70 | N/A | N/A | N/A |

REFRIGERATION

| Model | Zone | Section | System | Envr | REMOTE REFRIGERATION | | | | | GLYCOL / R744 REFRIGERATION | | | |
|------------|------|---------|--------------------|---------|----------------------|-----------------|-----------------|------------------------|------------------|-----------------------------|---------------------|-------------|------------------|
| | | | | | SST (°F) | Conv. Rack BTUH | Para. Rack BTUH | Defrost Interval (Hrs) | Defrost Duration | Total GPM | Pressure Drop (psi) | Concent (%) | Liquid Temp (°F) |
| NE3635DSSV | All | Ambient | Ambient/Lights-N/A | Type II | N/A | N/A | N/A | N/A | N/A | N/A | N/A | N/A | N/A |
| NE4835DSSV | All | Ambient | Ambient/Lights-N/A | Type II | N/A | N/A | N/A | N/A | N/A | N/A | N/A | N/A | N/A |

INTENDED ENVIRONMENT

Type I - Designed to operate in ambient conditions of 75°F with 55% relative humidity unless noted otherwise under Envr above.

WARMEST AVERAGE PRODUCT TEMP & INTENDED USE OF ZONES

| Zone | Temp (°F) | Intended Use |
|------|-----------|------------------------------------|
| 1 | Ambient | Packaged non-refrigerated products |

REGULATORY

| | |
|------------|---|
| All Models | ETL Listed to UL 65 ETL Sanitation to NSF/ANSI 2 |
|------------|---|

IMPORTANT NOTES

- 1) ELECTRICAL NOTE: If GFCI is required, a GFCI breaker MUST be used in lieu of a GFCI receptacle
- 2) 19.25" minimum space required beneath counter surface.
- 3) Glass warranty only applicable to first point of delivery.

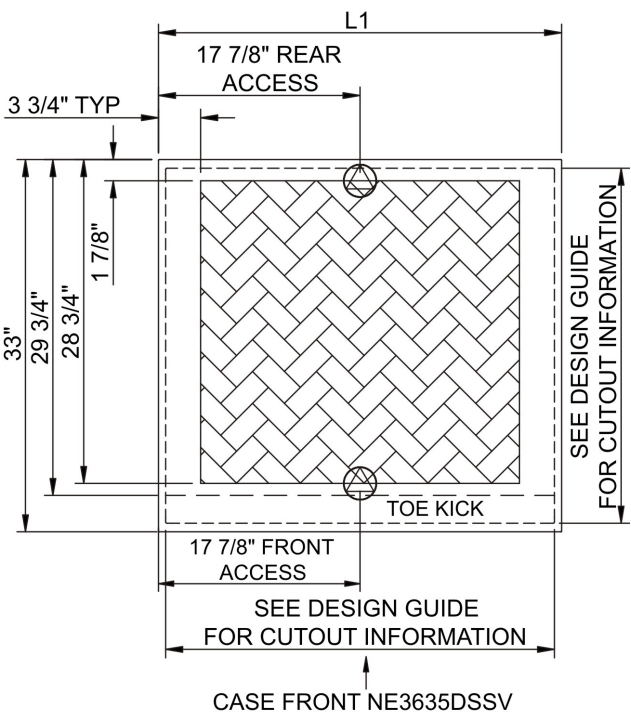
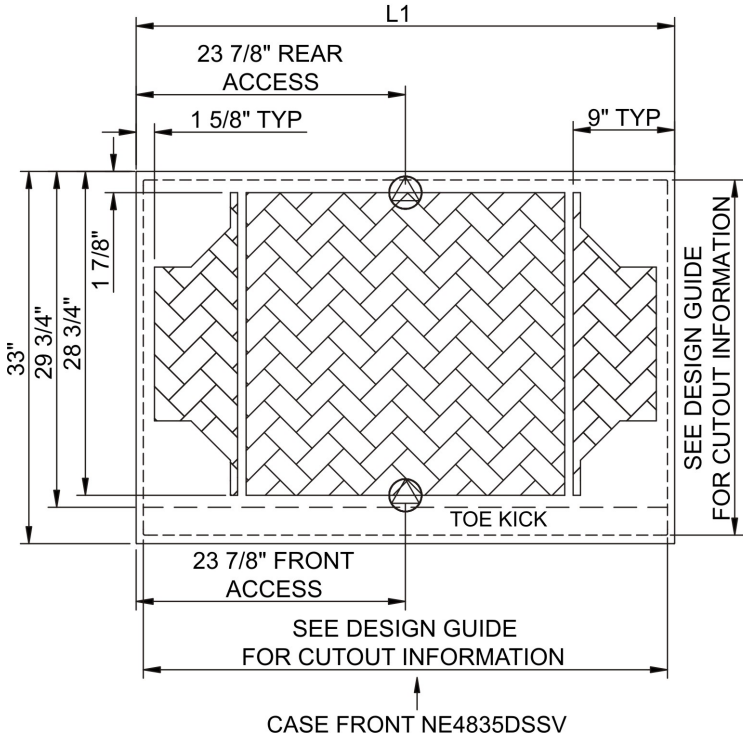
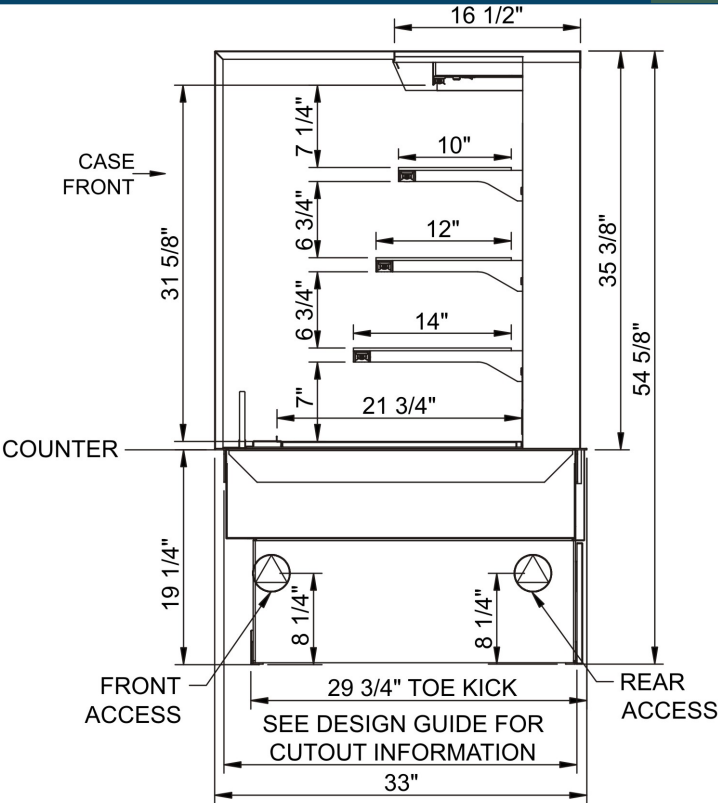


Technical Information

Reveal® - Non-Refrigerated Self-Service Slide In Counter Case

Structural Concepts®

DELIVERING FRESH. ALWAYS.™



NOTE: ALL DIMENSIONS APPROXIMATE

⊗ ELECTRICAL JUNCTION BOX (SUPPLIED WITH 6" LEADS OR POWER CORD).
⊙ LOCATION OF DRAIN TUBE FOR REMOTE REF. ONLY (SUPPLIED WITH 3/4" OR 1 1/2" PVC TUBE).

⊕ REFRIGERATION LINE CONNECTION.
⊞ REMOTE FLOOR SINK & UTILITIES ACCESS AREA.

▨ SELF-CONTAINED CASE SERVICE ACCESS AREA.
▩ DRY CASE SERVICE ACCESS AREA.