

# Technical Information

Reveal® - Refrigerated Self-Service Slide In Counter Case

Structural Concepts®

DELIVERING FRESH. ALWAYS.™

## DIMENSIONS / SHIPPING

Model	L"	L1"	L2"	Est Wt (lbs)
NE3635RSSV	N/A	35.750	4.125	N/A
NE4835RSSV	N/A	47.750	4.125	N/A
NE6035RSSV	N/A	59.750	4.125	N/A
NE7235RSSV	N/A	71.750	4.125	N/A

## ELECTRICAL

Model	System Circuit Volts			Ph	Frq	Rated Load Amps	Min Cir Amps	Max OCP Amps	Watts	Wires	NEMA Plug	Amps Lights	Amps Fans	Amps Anti-Sweats	Amps Misc/Refrig/Heat
NE3635RSSV	Remote (DX)	Circuit #1	110-120	1	60	1.20	15	15	54	2+G	Leads Single	0.70	0.30	0.12	0.08
	Remote (DX)	Circuit #1	110-120	1	60	1.20	15	15	54	2+G	Leads Single	0.70	0.30	0.12	0.08
	Self-Contained (R513A)	Circuit #1	110-120	1	60	16.00	20	20	1,187	2+G	5-20P or L5-20P	N/A	0.90	4.08	11.70
NE4835RSSV	Remote (DX)	Circuit #1	110-120	1	60	1.56	15	15	82	2+G	Leads Single	0.70	0.60	0.18	0.08
	Remote (DX)	Circuit #1	110-120	1	60	1.56	15	15	82	2+G	Leads Single	0.70	0.60	0.18	0.08
	Self-Contained (R513A)	Circuit #1	208-240	1	60	11.11	15	15	1,634	2+G	6-15P or L6-15P	0.36	0.75	3.50	6.50
NE6035RSSV	Remote (DX)	Circuit #1	110-120	1	60	1.60	15	15	92	2+G	Leads Single	0.70	0.60	0.22	0.08
	Remote (DX)	Circuit #1	110-120	1	60	1.60	15	15	92	2+G	Leads Single	0.70	0.60	0.22	0.08
	Self-Contained (R513A)	Circuit #1	208-240	1	60	12.00	15	15	1,896	2+G	6-15P or L6-15P	0.36	0.75	3.52	8.00
NE7235RSSV	Remote (DX)	Circuit #1	110-120	1	60	1.64	15	15	105	2+G	Leads Single	0.70	0.60	0.26	0.08
	Remote (DX)	Circuit #1	110-120	1	60	1.64	15	15	105	2+G	Leads Single	0.70	0.60	0.26	0.08
	Self-Contained (R513A)	Circuit #1	208-240	1	60	12.00	15	15	1,909	2+G	6-15P or L6-15P	0.36	0.75	3.55	8.00

## REFRIGERATION

Model	Zone	Section	System	Envt	REMOTE REFRIGERATION					GLYCOL / R744 REFRIGERATION			
					SST (°F)	Conv. Rack BTUH	Para. Rack BTUH	Defrost Interval (Hrs)	Defrost Duration	Total GPM	Pressure Drop (psi)	Concent (%)	Liquid Temp (°F)
NE3635RSSV	All	Refrigerator	Remote-DX	Type II	20	3,650	3,380	4.00	30.00	N/A	N/A	N/A	N/A
	All	Main	Self-Contained-R513A	Type II	N/A	N/A	N/A	N/A	N/A	N/A	N/A	N/A	N/A
	All	Refrigerator	Remote-DX	Type I	20	2,938	2,720	4.00	30.00	N/A	N/A	N/A	N/A
NE4835RSSV	All	Refrigerator	Remote-DX	Type II	20	4,838	4,480	4.00	30.00	N/A	N/A	N/A	N/A
	All	Main	Self-Contained-R513A	Type II	N/A	N/A	N/A	N/A	N/A	N/A	N/A	N/A	N/A
	All	Refrigerator	Remote-DX	Type I	20	3,888	3,600	4.00	30.00	N/A	N/A	N/A	N/A
NE6035RSSV	All	Refrigerator	Remote-DX	Type II	20	6,026	5,580	4.00	25.00	N/A	N/A	N/A	N/A
	All	Main	Self-Contained-R513A	Type II	N/A	N/A	N/A	N/A	N/A	N/A	N/A	N/A	N/A
	All	Refrigerator	Remote-DX	Type I	20	4,860	4,500	4.00	25.00	N/A	N/A	N/A	N/A
NE7235RSSV	All	Refrigerator	Remote-DX	Type II	20	7,193	6,660	4.00	25.00	N/A	N/A	N/A	N/A
	All	Main	Self-Contained-R513A	Type II	N/A	N/A	N/A	N/A	N/A	N/A	N/A	N/A	N/A
	All	Refrigerator	Remote-DX	Type I	20	5,789	5,360	4.00	25.00	N/A	N/A	N/A	N/A

## INTENDED ENVIRONMENT

Type II - Designed to operate in ambient conditions of 80°F and 55% relative humidity unless noted otherwise under Envt above.

## WARMEST AVERAGE PRODUCT TEMP & INTENDED USE OF ZONES

Zone	Temp (°F)	Intended Use
1	40	Packaged refrigerated products

## IMPORTANT NOTES

- 1) ELECTRICAL NOTE: If GFCI is required, a GFCI breaker MUST be used in lieu of a GFCI receptacle
- 2) Verify ventilation requirements for your installation by referring to the Design guide located in our Foodservice Resource Library at [structuralconcepts.com](http://structuralconcepts.com).
- 3) Rear Access Standard - Counter must be configured to allow air to be drawn in the rear and discharged out the front.
- 4) Front Access Option - Counter must be configured to allow air to be drawn in the front and discharged out the rear.
- 5) Unit can intake and discharge from rear with optional rear vented panel.
- 6) 19.25" minimum space required beneath counter surface.
- 7) Due to DOE regulations, the maximum counter height on this model is 30".
- 8) Glass warranty only applicable to first point of delivery.

# Technical Information

Reveal® - Refrigerated Self-Service Slide In Counter Case

REGULATORY	
All Models	Accordance with AHRI Std 1200 ETL Listed to UL 471 ETL Listed to CAN/CSA 22.2 No. 120 ETL Sanitation to NSF/ANSI 7



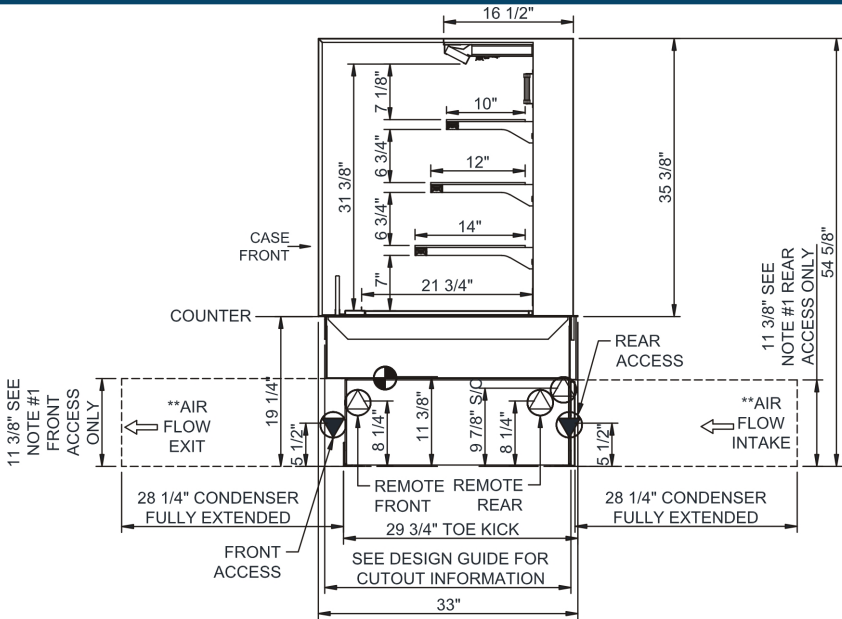
In Accordance with  
AHRI Std 1200

NOTE: ALL DIMENSIONS APPROXIMATE

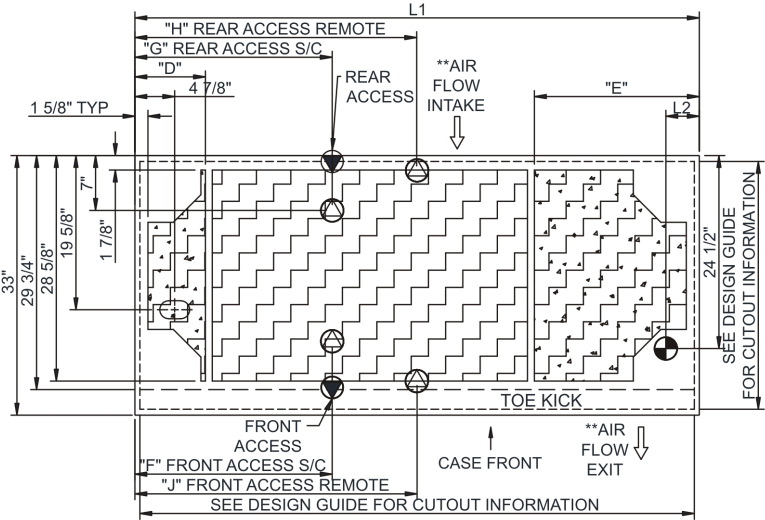
-  ELECTRICAL JUNCTION BOX (SUPPLIED WITH 6" LEADS OR POWER CORD).
-  REFRIGERATION LINE CONNECTION.
-  SELF-CONTAINED CASE SERVICE ACCESS AREA.
-  LOCATION OF DRAIN TUBE FOR REMOTE REF. ONLY (SUPPLIED WITH 3/4" OR 1 1/2" PVC TUBE).
-  REMOTE FLOOR SINK & UTILITIES ACCESS AREA.
-  DRY CASE SERVICE ACCESS AREA.

Technical Information

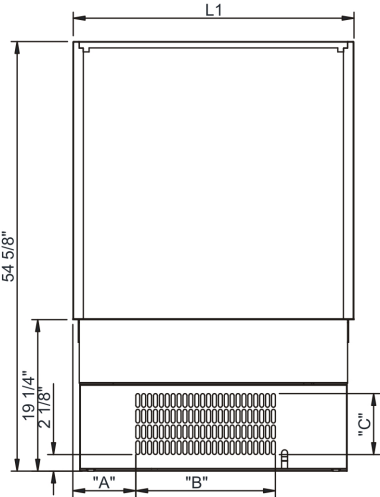
Reveal® - Refrigerated Self-Service Slide In Counter Case



- NOTES:
- 1. 11 3/8" TALL, FULL WIDTH OF CASE OPENING IN CABINET OR COUNTER IS REQUIRED TO PULL OUT REFRIGERATION SYSTEM.
  - 2. BACK OF COUNTER / CABINET MUST BE VENTED PROPERLY FOR ADEQUATE AIRFLOW TO CONDENSER.
  - 3. \*\*REPRESENTS REAR PULLOUT REFRIGERATION. AIR FLOW INTAKE AND EXIT DETAILS ARE REVERSED WITH FRONT PULLOUT REFRIGERATION OPTION.
  - 4. SELF-CONTAINED ACCESS ONLY BY PULLING OUT CONDENSER UNIT.
  - 5. SEE "COUNTER INSTALLATION GUIDE" FOR AIR FLOW REQUIREMENTS.



	"D"	"E"	"F"	"G"	"H"	"J"
NE3635RSSV	N/A	N/A	7"	7"	17 7/8"	17 7/8"
NE4835RSSV	N/A	N/A	12 3/4"	12 3/4"	23 7/8"	23 7/8"
NE6035RSSV	9"	9"	12 3/4"	24 3/4"	29 7/8"	29 7/8"
NE7235RSSV	9"	21"	25 1/8"	25 1/8"	35 7/8"	35 7/8"



	"A"	"B"	"C"
NE3635RSSV	8"	17 3/4"	7 3/4"
NE4835RSSV	7"	30 1/2"	7 3/4"
NE6035RSSV	13"	30 1/2"	7 3/4"
NE7235RSSV	25"	30 1/2"	7 3/4"

NOTE: ALL DIMENSIONS APPROXIMATE

- ELECTRICAL JUNCTION BOX (SUPPLIED WITH 6" LEADS OR POWER CORD).
- REFRIGERATION LINE CONNECTION.
- SELF-CONTAINED CASE SERVICE ACCESS AREA.
- LOCATION OF DRAIN TUBE FOR REMOTE REF. ONLY (SUPPLIED WITH 3/4" OR 1 1/2" PVC TUBE).
- REMOTE FLOOR SINK & UTILITIES ACCESS AREA.
- DRY CASE SERVICE ACCESS AREA.