

Technical Information

Reveal® - Heated Self-Service Case

Structural Concepts®

DELIVERING FRESH. ALWAYS.™

DIMENSIONS / SHIPPING

| Model | L" | L1" | L2" | Est Wt (lbs) |
|------------|-----|--------|-------|--------------|
| NR3633HSSV | N/A | 35.750 | 0.000 | N/A |
| NR4833HSSV | N/A | 47.750 | 0.000 | N/A |

ELECTRICAL

| Model | System Circuit Volts | | | Ph | Frq | Rated Load Amps | Min Cir Amps | Max OCP Amps | Watts | Wires | NEMA Plug | Amps Lights | Amps Fans | Amps Anti-Sweats | Amps Misc/Refrig/Heat |
|------------|----------------------|------------|---------|----|-----|-----------------|--------------|--------------|-------|-------|-----------------|-------------|-----------|------------------|-----------------------|
| NR3633HSSV | Heat (N/A) | Circuit #1 | 208-240 | 1 | 60 | 12.24 | 20 | 20 | 2,390 | 2+G | 6-20P or L6-20P | 0.36 | 0.21 | N/A | 11.67 |
| NR4833HSSV | Heat (N/A) | Circuit #1 | 208-240 | 1 | 60 | 18.00 | 30 | 30 | 3,548 | 2+G | 6-30P or L6-30P | 0.36 | 0.35 | N/A | 17.29 |

REFRIGERATION

| Model | Zone | Section | System | Envt | REMOTE REFRIGERATION | | | | | GLYCOL / R744 REFRIGERATION | | | |
|-------|------|---------|--------|------|----------------------|-----------------|-----------------|------------------------|------------------|-----------------------------|---------------------|-------------|------------------|
| | | | | | SST (°F) | Conv. Rack BTUH | Para. Rack BTUH | Defrost Interval (Hrs) | Defrost Duration | Total GPM | Pressure Drop (psi) | Concent (%) | Liquid Temp (°F) |

INTENDED ENVIRONMENT

Type I - Designed to operate in ambient conditions of 75°F with 55% relative humidity unless noted otherwise under Envt above.

IMPORTANT NOTES

- 1) ELECTRICAL NOTE: If GFCI is required, a GFCI breaker MUST be used in lieu of a GFCI receptacle
- 2) Glass warranty only applicable to first point of delivery.

WARMEST AVERAGE PRODUCT TEMP & INTENDED USE OF ZONES

| Zone | Temp (°F) | Intended Use |
|------|-----------|---------------------------------------|
| 1 | 160 | Packaged / unpackaged heated products |

REGULATORY

| | |
|------------|--|
| All Models | ETL Listed to UL 197 ETL Listed to CAN/CSA 22.2 No. 109 ETL Sanitation to NSF/ANSI 4 |
|------------|--|

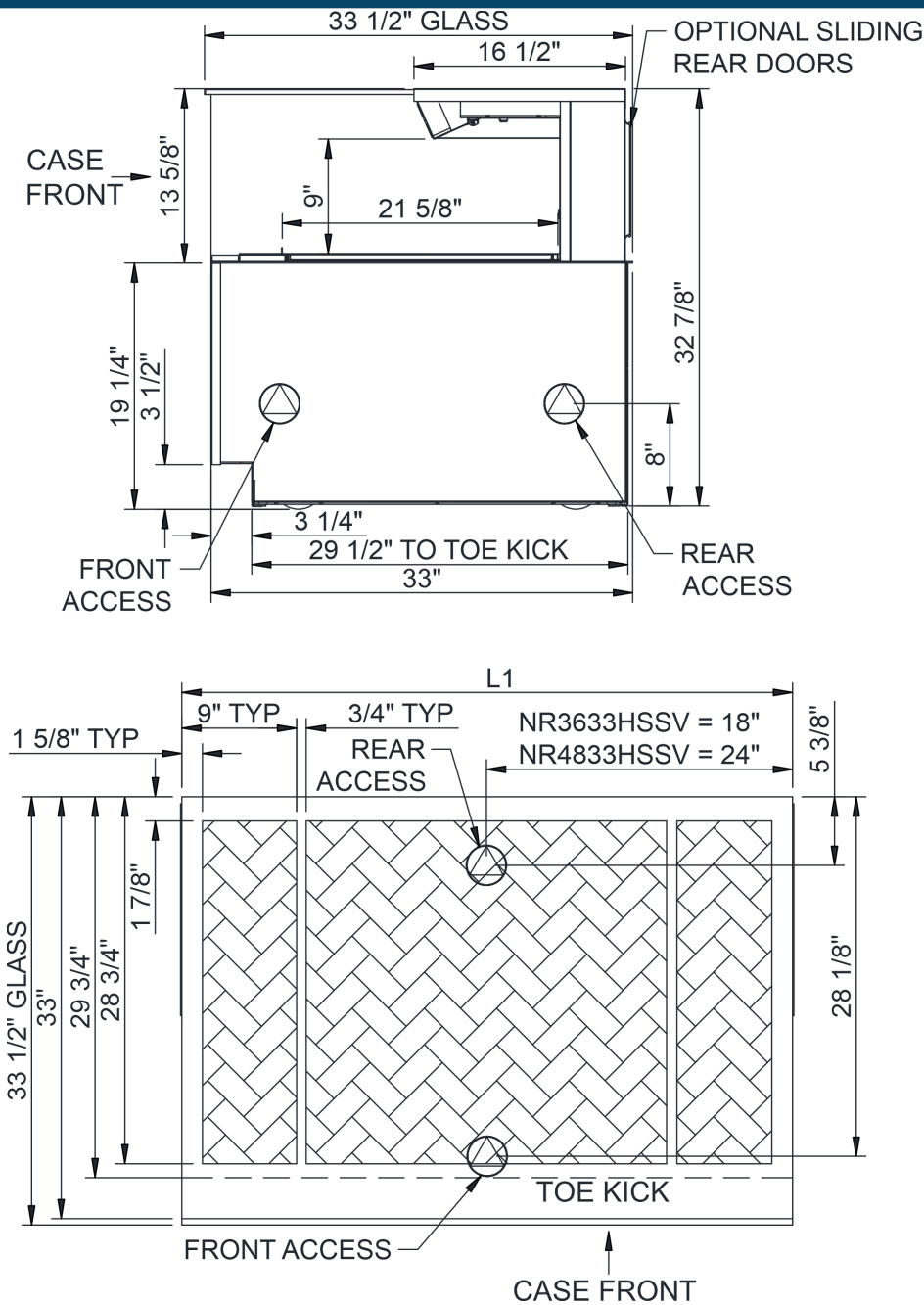


Technical Information

Reveal® - Heated Self-Service Case

Structural Concepts®

DELIVERING FRESH. ALWAYS.™



REAR VIEW

NOTE: ALL DIMENSIONS APPROXIMATE

- | | | |
|--|--|--|
| ELECTRICAL JUNCTION BOX (SUPPLIED WITH 6" LEADS OR POWER CORD). | REFRIGERATION LINE CONNECTION. | SELF-CONTAINED CASE SERVICE ACCESS AREA. |
| LOCATION OF DRAIN TUBE FOR REMOTE REF. ONLY (SUPPLIED WITH 3/4" OR 1 1/2" PVC TUBE). | REMOTE FLOOR SINK & UTILITIES ACCESS AREA. | DRY CASE SERVICE ACCESS AREA. |