

Technical Information

Reveal® - Refrigerated Self-Service Case

Structural Concepts®

DELIVERING FRESH. ALWAYS.™

DIMENSIONS / SHIPPING

Model	L"	L1"	L2"	Est Wt (lbs)
NR3640RSSV	N/A	35.750	7.500	N/A
NR4840RSSV	N/A	47.750	7.500	N/A
NR6040RSSV	N/A	59.750	7.500	N/A
NR7240RSSV	N/A	71.750	7.500	N/A

ELECTRICAL

Model	System Circuit Volts			Ph	Frq	Rated Load Amps	Min Cir Amps	Max OCP Amps	Watts	Wires	NEMA Plug	Amps Lights	Amps Fans	Amps Anti-Sweats	Amps Misc/Refrig/Heat
NR3640RSSV	Remote (DX)	Circuit #1	110-120	1	60	1.20	15	15	46	2+G	Leads Single	0.70	0.30	0.12	0.08
	Remote (DX)	Circuit #1	110-120	1	60	1.20	15	15	46	2+G	Leads Single	0.70	0.30	0.12	0.08
	Self-Contained (R513A)	Circuit #1	110-120	1	60	9.68	15	15	765	2+G	5-15P or L5-15P	0.70	0.90	4.08	4.00
	Self-Contained (R290)	Circuit #1	110-120	1	60	10.85	15	15	972	2+G	5-15P or L5-15P	N/A	0.45	4.08	6.32
NR4840RSSV	Remote (DX)	Circuit #1	110-120	1	60	1.26	15	15	57	2+G	Leads Single	0.70	0.30	0.18	0.08
	Remote (DX)	Circuit #1	110-120	1	60	1.26	15	15	57	2+G	Leads Single	0.70	0.30	0.18	0.08
	Self-Contained (R513A)	Circuit #1	110-120	1	60	16.00	20	20	1,190	2+G	5-20P or L5-20P	0.70	0.90	4.14	11.00
	Self-Contained (R290)	Circuit #1	110-120	1	60	15.65	20	20	1,533	2+G	5-20P or L5-20P	N/A	0.90	4.13	10.62
NR6040RSSV	Remote (DX)	Circuit #1	110-120	1	60	1.60	15	15	78	2+G	Leads Single	0.70	0.60	0.22	0.08
	Remote (DX)	Circuit #1	110-120	1	60	1.60	15	15	78	2+G	Leads Single	0.70	0.60	0.22	0.08
	Self-Contained (R513A)	Circuit #1	110-120	1	60	16.00	20	20	1,211	2+G	5-20P or L5-20P	0.70	1.20	4.18	11.00
	Self-Contained (R290)	Circuit #1	110-120	1	60	15.70	20	20	1,545	2+G	5-20P or L5-20P	N/A	0.90	4.18	10.62
NR7240RSSV	Remote (DX)	Circuit #1	110-120	1	60	1.64	15	15	87	2+G	Leads Single	0.70	0.60	0.26	0.08
	Remote (DX)	Circuit #1	110-120	1	60	1.64	15	15	87	2+G	Leads Single	0.70	0.60	0.26	0.08
	Self-Contained (R513A)	Circuit #1	208-240	1	60	11.16	15	15	1,640	2+G	6-15P or L6-15P	0.36	0.75	3.55	6.50
	Self-Contained (R290)	Circuit #1	208-240	1	60	16.00	20	20	2,804	2+G	6-20P or L6-20P	N/A	0.44	3.54	13.61

REFRIGERATION

Model	Zone	Section	System	Envt	REMOTE REFRIGERATION					GLYCOL / R744 REFRIGERATION			
					SST (°F)	Conv. Rack BTUH	Para. Rack BTUH	Defrost Interval (Hrs)	Defrost Duration	Total GPM	Pressure Drop (psi)	Concent (%)	Liquid Temp (°F)
NR3640RSSV	All	Refrigerator	Remote-DX	Type II	20	1,771	1,640	4.00	30.00	N/A	N/A	N/A	N/A
	All	Main	Self-Contained-R513A	Type II	N/A	N/A	N/A	N/A	N/A	N/A	N/A	N/A	N/A
	All	Refrigerator	Remote-DX	Type I	20	1,447	1,340	4.00	30.00	N/A	N/A	N/A	N/A
NR4840RSSV	All	Refrigerator	Remote-DX	Type II	20	2,333	2,160	4.00	30.00	N/A	N/A	N/A	N/A
	All	Main	Self-Contained-R513A	Type II	N/A	N/A	N/A	N/A	N/A	N/A	N/A	N/A	N/A
	All	Refrigerator	Remote-DX	Type I	20	1,922	1,780	4.00	30.00	N/A	N/A	N/A	N/A
NR6040RSSV	All	Refrigerator	Remote-DX	Type II	20	2,873	2,660	4.00	25.00	N/A	N/A	N/A	N/A
	All	Main	Self-Contained-R513A	Type II	N/A	N/A	N/A	N/A	N/A	N/A	N/A	N/A	N/A
	All	Refrigerator	Remote-DX	Type I	20	2,376	2,200	4.00	25.00	N/A	N/A	N/A	N/A
NR7240RSSV	All	Refrigerator	Remote-DX	Type II	20	3,391	3,140	4.00	25.00	N/A	N/A	N/A	N/A
	All	Main	Self-Contained-R513A	Type II	N/A	N/A	N/A	N/A	N/A	N/A	N/A	N/A	N/A
	All	Refrigerator	Remote-DX	Type I	20	2,830	2,620	4.00	25.00	N/A	N/A	N/A	N/A

INTENDED ENVIRONMENT

Type II - Designed to operate in ambient conditions of 80°F and 55% relative humidity unless noted otherwise under Envt above.

WARMEST AVERAGE PRODUCT TEMP & INTENDED USE OF ZONES

Zone	Temp (°F)	Intended Use
1	40	Packaged refrigerated products

IMPORTANT NOTES

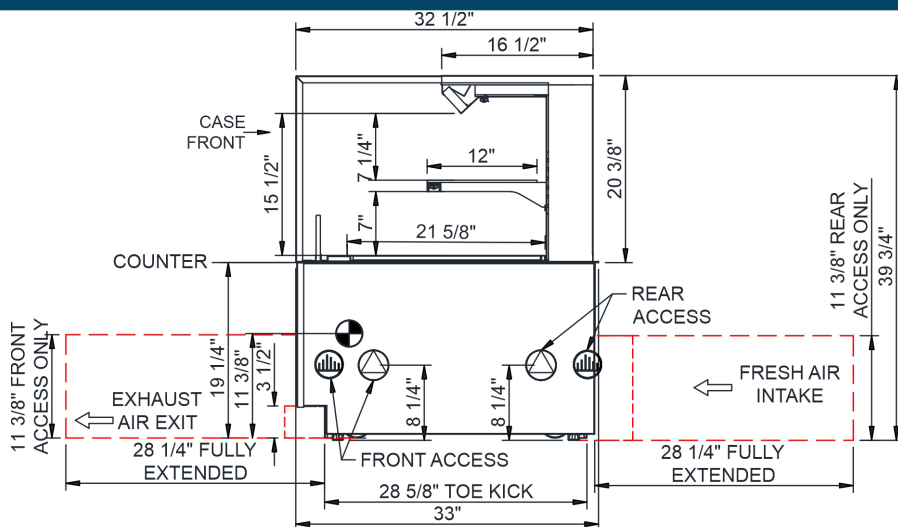
- 1) ELECTRICAL NOTE: If GFCI is required, a GFCI breaker MUST be used in lieu of a GFCI receptacle
- 2) Back side of counter must be open or vented the full length of the unit to allow proper ventilation for the refrigeration system.
- 3) Glass warranty only applicable to first point of delivery.
- 4) Compressor air intake from rear and out front panel at toe kick. Front panel cannot be blocked.

REGULATORY

All Models	Accordance with AHRI Std 1200 ETL Listed to UL 471 ETL Listed to CAN/CSA 22.2 No. 120 ETL Sanitation to NSF/ANSI 7
------------	---

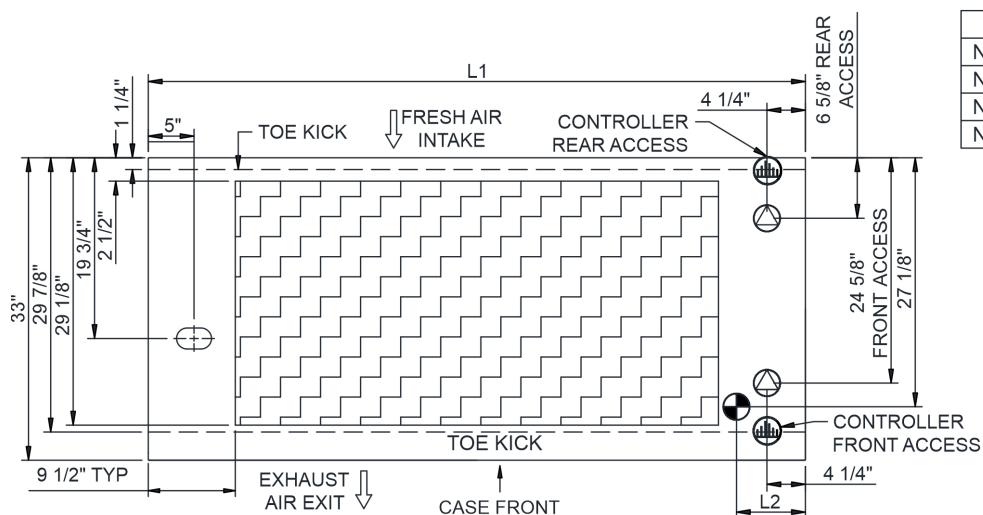
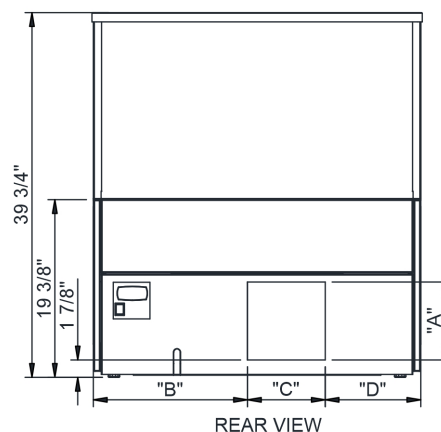


In Accordance with
AHRI Std 1200



NOTES:

1. 11 3/8" TALL, FULL WIDTH OF CASE OPENING IN CABINET OR COUNTER IS REQUIRED TO PULL OUT REFRIGERATION SYSTEM.
2. BACK OF COUNTER / CABINET MUST BE VENTED PROPERLY FOR ADEQUATE AIRFLOW TO CONDENSER.
3. **REPRESENTS REAR PULLOUT REFRIGERATION. AIR FLOW INTAKE AND EXIT DETAILS ARE REVERSED WITH FRONT PULLOUT REFRIGERATION OPTION.
4. SELF-CONTAINED ACCESS ONLY BY PULLING OUT CONDENSER UNIT.
5. SEE "COUNTER INSTALLATION GUIDE" FOR AIR FLOW REQUIREMENTS.



	"A"	"B"	"C"	"D"
NR3640RSSV	8 1/2"	16 3/4"	8 1/2"	10 1/2"
NR4840RSSV	8 1/2"	28 3/4"	8 1/2"	10 1/2"
NR6040RSSV	8 1/2"	40 3/4"	8 1/2"	10 1/2"
NR7240RSSV	8 1/2"	22 3/4"	8 1/2" x2	10 1/2"

R290 SELF-CONTAINED ACCESS DIMENSIONS PROVIDED.
CONTACT FACTORY FOR ALL OTHER SELF-CONTAINED ACCESS DIMENSIONS

NOTE: ALL DIMENSIONS APPROXIMATE



**ELECTRICAL JUNCTION BOX
(SUPPLIED WITH 6" LEADS OR POWER CORD).
LOCATION OF DRAIN TUBE FOR REMOTE REF.
ONLY (SUPPLIED WITH 3/4" OR 1 1/2" PVC TUBE).**



REFRIGERATION LINE CONNECTION



REMOTE FLOOR SINK & UTILITIES
ACCESS AREA.



SELF-CONTAINED CASE SERVICE ACCESS AREA



DRY CASE SERVICE ACCESS AREA