

Technical Information

Reveal® - Refrigerated Service Case

Structural Concepts®

DELIVERING FRESH. ALWAYS.™

DIMENSIONS / SHIPPING

Model	L"	L1"	L2"	Est Wt (lbs)
NR3640RSV	N/A	35.750	7.500	N/A
NR4840RSV	N/A	47.750	7.500	N/A
NR6040RSV	N/A	59.750	7.500	N/A
NR7240RSV	N/A	71.750	7.500	N/A

ELECTRICAL

Model	System Circuit Volts				Ph	Frq	Rated Load Amps	Min Cir Amps	Max OCP Amps	Watts	Wires	NEMA Plug	Amps Lights	Amps Fans	Amps Anti-Sweats	Amps Misc/Refrig/Heat
NR3640RSV	Remote (DX)	Circuit #1	110-120	1	60	1.08	15	15	32	2+G	Leads Single	0.70	0.30			0.08
	Remote (DX)	Circuit #1	110-120	1	60	1.08	15	15	32	2+G	Leads Single	0.70	0.30			0.08
	Self-Contained (R290)	Circuit #1	110-120	1	60	10.73	15	15	957	2+G	5-15P or L5-15P	N/A	0.45	3.96		6.32
NR4840RSV	Remote (DX)	Circuit #1	110-120	1	60	1.08	15	15	35	2+G	Leads Single	0.70	0.30			0.08
	Remote (DX)	Circuit #1	110-120	1	60	1.08	15	15	35	2+G	Leads Single	0.70	0.30			0.08
	Self-Contained (R290)	Circuit #1	110-120	1	60	11.18	15	15	985	2+G	5-15P or L5-15P	N/A	0.90	3.96		6.32
NR6040RSV	Remote (DX)	Circuit #1	110-120	1	60	1.38	15	15	52	2+G	Leads Single	0.70	0.60			0.08
	Remote (DX)	Circuit #1	110-120	1	60	1.38	15	15	52	2+G	Leads Single	0.70	0.60			0.08
	Self-Contained (R290)	Circuit #1	110-120	1	60	11.18	15	15	991	2+G	5-15P or L5-15P	N/A	0.90	3.96		6.32
NR7240RSV	Remote (DX)	Circuit #1	110-120	1	60	1.38	15	15	55	2+G	Leads Single	0.70	0.60			0.08
	Remote (DX)	Circuit #1	110-120	1	60	1.38	15	15	55	2+G	Leads Single	0.70	0.60			0.08
	Self-Contained (R290)	Circuit #1	110-120	1	60	11.18	15	15	998	2+G	5-15P or L5-15P	N/A	0.90	3.96		6.32

REFRIGERATION

Model	Zone	Section	System	Envt	REMOTE REFRIGERATION					GLYCOL / R744 REFRIGERATION			
					SST (°F)	Conv. Rack BTUH	Para. Rack BTUH	Defrost Interval (Hrs)	Defrost Duration	Total GPM	Pressure Drop (psi)	Concent (%)	Liquid Temp (°F)
NR3640RSV	All	Refrigerator	Remote-DX	Type II	24	864	800	4.00	30.00	N/A	N/A	N/A	N/A
	All	Refrigerator	Remote-DX	Type I	24	778	720	4.00	30.00	N/A	N/A	N/A	N/A
	All	Main	Self-Contained-R290	Type II	N/A	N/A	N/A	N/A	N/A	N/A	N/A	N/A	N/A
NR4840RSV	All	Refrigerator	Remote-DX	Type II	24	1,123	1,040	4.00	30.00	N/A	N/A	N/A	N/A
	All	Refrigerator	Remote-DX	Type I	24	994	920	4.00	30.00	N/A	N/A	N/A	N/A
	All	Main	Self-Contained-R290	Type II	N/A	N/A	N/A	N/A	N/A	N/A	N/A	N/A	N/A
NR6040RSV	All	Refrigerator	Remote-DX	Type II	20	1,382	1,280	4.00	25.00	N/A	N/A	N/A	N/A
	All	Refrigerator	Remote-DX	Type I	20	1,231	1,140	4.00	25.00	N/A	N/A	N/A	N/A
	All	Main	Self-Contained-R290	Type II	N/A	N/A	N/A	N/A	N/A	N/A	N/A	N/A	N/A
NR7240RSV	All	Refrigerator	Remote-DX	Type II	20	1,642	1,520	4.00	30.00	N/A	N/A	N/A	N/A
	All	Refrigerator	Remote-DX	Type I	20	1,469	1,360	4.00	30.00	N/A	N/A	N/A	N/A
	All	Main	Self-Contained-R290	Type II	N/A	N/A	N/A	N/A	N/A	N/A	N/A	N/A	N/A

INTENDED ENVIRONMENT

Type II - Designed to operate in ambient conditions of 80°F and 55% relative humidity unless noted otherwise under Envt above.

WARMEST AVERAGE PRODUCT TEMP & INTENDED USE OF ZONES

Zone	Temp (°F)	Intended Use
1	40	Unpackaged refrigerated products

REGULATORY

All Models	Accordance with AHRI Std 1200 ETL Listed to UL 471 ETL Listed to CAN/CSA 22.2 No. 120 ENERGY STAR® ETL Sanitation to NSF/ANSI 7
------------	---

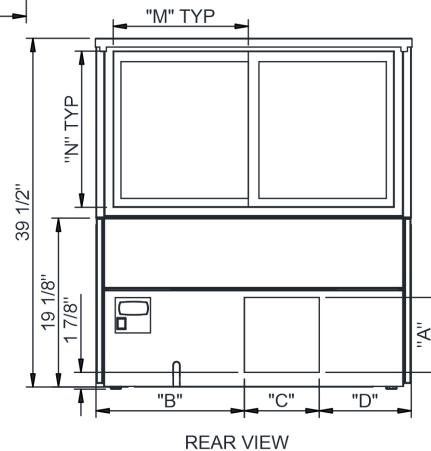
IMPORTANT NOTES

- 1) ELECTRICAL NOTE: If GFCI is required, a GFCI breaker MUST be used in lieu of a GFCI receptacle
- 2) Back side of counter must be open or vented the full length of the unit to allow proper ventilation for the refrigeration system.
- 3) Glass warranty only applicable to first point of delivery.



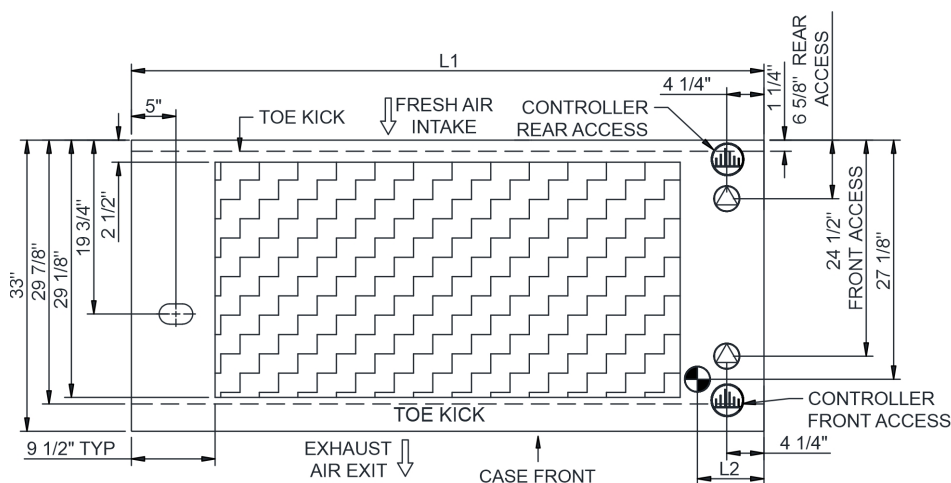
Reveal® - Refrigerated Service Case


DELIVERING FRESH. ALWAYS.™




1. 11 3/8" TALL, FULL WIDTH OF CASE OPENING IN CABINET OR COUNTER IS REQUIRED TO PULL OUT REFRIGERATION SYSTEM.
2. SEE DESIGN GUIDE FOR CUTOUT SIZE IN CABINET FOR CASE TO DROP INTO.
3. BACK OF COUNTER / CABINET MUST BE VENTED PROPERLY FOR ADEQUATE AIRFLOW TO CONDENSER.
4. **REPRESENTS REAR PULLOUT REFRIGERATION. AIR FLOW INTAKE AND EXIT DETAILS ARE REVERSED WITH FRONT PULLOUT REFRIGERATION OPTION.
5. SELF-CONTAINED ACCESS ONLY BY PULLING OUT CONDENSER UNIT.
6. SEE "COUNTER INSTALLATION GUIDE" FOR AIR FLOW REQUIREMENTS.

	"A"	"B"	"C"	"D"		"M"	"N"
NR3640RSV	8 1/2"	16 3/4"	8 1/2"	10 1/2"	NR3640RSV	14 1/2"	17 3/8"
NR4840RSV	8 1/2"	28 3/4"	8 1/2"	10 1/2"	NR4840RSV	20 1/2"	17 3/8"
NR6040RSV	8 1/2"	40 3/4"	8 1/2"	10 1/2"	NR6040RSV	26 1/2"	17 3/8"
NR7240RSV	8 1/2"	22 3/4"	8 1/2" x2	10 1/2"	NR7240RSV	32 1/2"	17 3/8"



 ELECTRICAL JUNCTION BOX
(SUPPLIED WITH 6" LEADS OR POWER CORD).

 LOCATION OF DRAIN TUBE FOR REMOTE REF.
ONLY (SUPPLIED WITH 3/4" OR 1 1/2" PVC TUBE).

 REFRIGERATION LINE CONNECTION.

 REMOTE FLOOR SINK & UTILITIES ACCESS AREA.

 SELF-CONTAINED CASE SERVICE ACCESS AREA.

 DRY CASE SERVICE ACCESS AREA.